

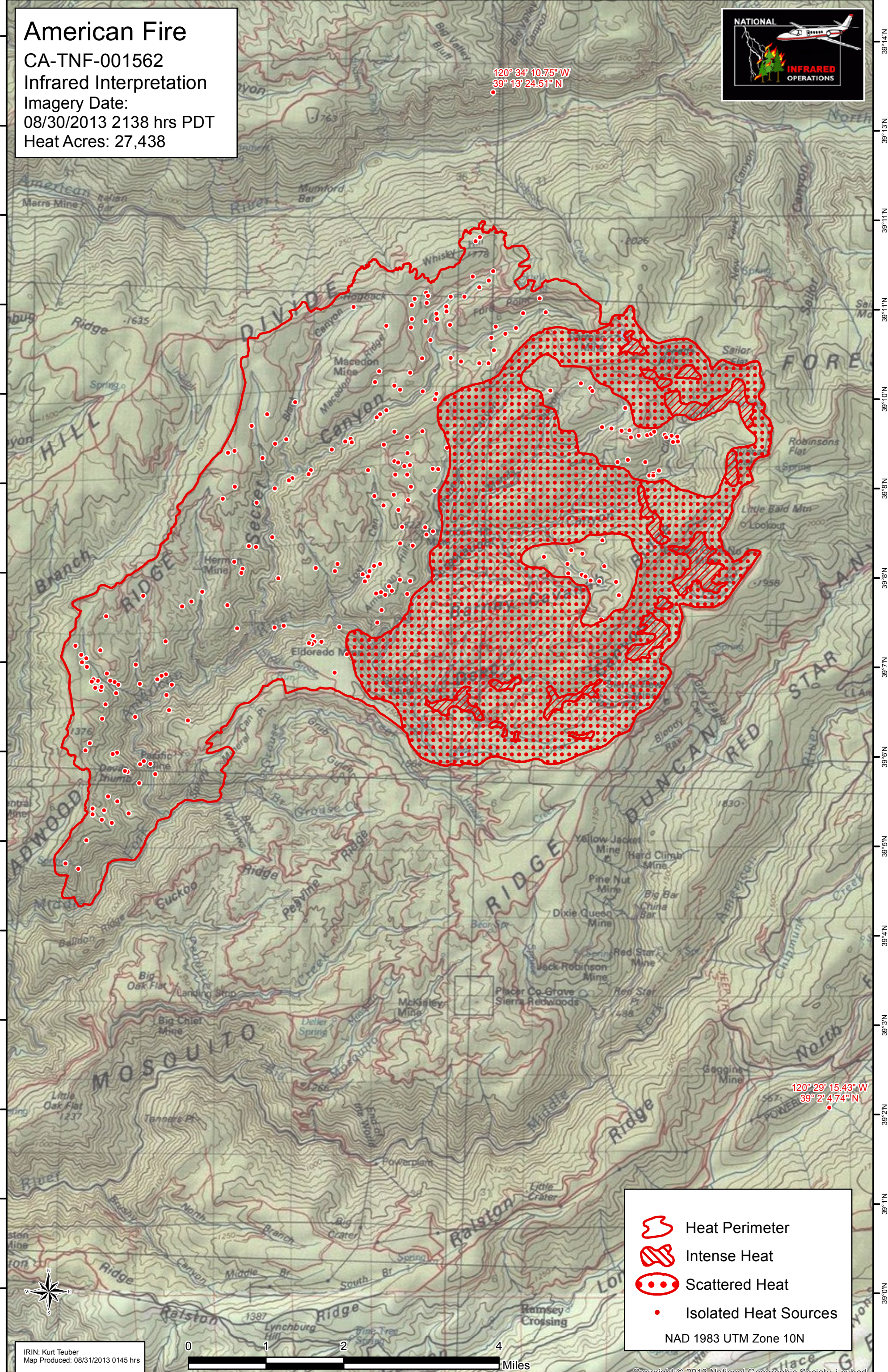
120°41'W 120°40'W 120°38'W 120°38'W 120°37'W 120°36'W 120°35'W 120°34'W 120°33'W 120°32'W 120°31'W 120°30'W 120°29'W





**American Fire**  
CA-TNF-001562  
Infrared Interpretation  
Imagery Date:  
08/30/2013 2138 hrs PDT  
Heat Acres: 27,438



120° 34' 10.75" W  
39° 13' 24.51" N

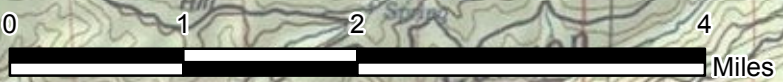
120° 29' 15.43" W  
39° 2' 4.74" N



-  Heat Perimeter
-  Intense Heat
-  Scattered Heat
-  Isolated Heat Sources

NAD 1983 UTM Zone 10N

IRIN: Kurt Teuber  
Map Produced: 08/31/2013 0145 hrs



120°41'W 120°40'W 120°38'W 120°38'W 120°37'W 120°36'W 120°35'W 120°34'W 120°33'W 120°32'W 120°31'W 120°30'W 120°29'W