

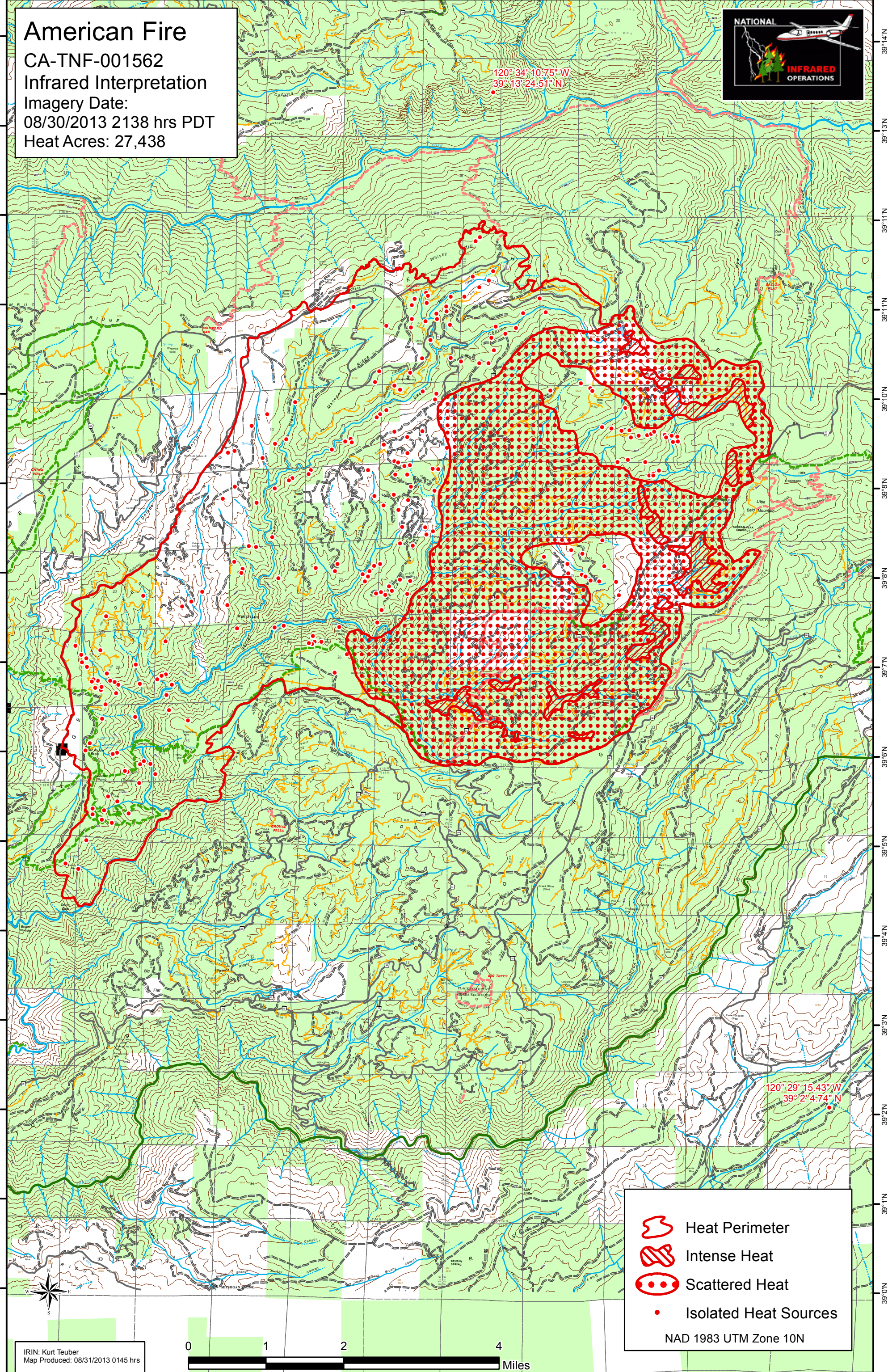
120°41'W 120°40'W 120°38'W 120°38'W 120°37'W 120°36'W 120°35'W 120°34'W 120°33'W 120°32'W 120°31'W 120°30'W 120°29'W





**American Fire**  
CA-TNF-001562  
Infrared Interpretation  
Imagery Date:  
08/30/2013 2138 hrs PDT  
Heat Acres: 27,438



120°34'10.75"W  
39°13'24.51"N

120°29'15.43"W  
39°2'4.74"N



-  Heat Perimeter
  -  Intense Heat
  -  Scattered Heat
  -  Isolated Heat Sources
- NAD 1983 UTM Zone 10N

IRIN: Kurt Teuber  
Map Produced: 08/31/2013 0145 hrs

0 1 2 4 Miles

120°41'W 120°40'W 120°38'W 120°38'W 120°37'W 120°36'W 120°35'W 120°34'W 120°33'W 120°32'W 120°31'W 120°30'W 120°29'W