

KING INCIDENT

Incident Action Plan

CA-ENF-023461

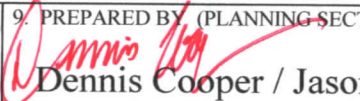

P5JEE9 (0503)


DAY SHIFT

9/18/14

Operational Period 0600 - 1800



INCIDENT OBJECTIVES	1. INCIDENT NAME	2. DATE PREPARED	3. TIME PREPARED
	KING	9/17/14	2100
4. OPERATIONAL PERIOD (DATE/TIME) <p style="text-align: center;">DAY SHIFT 9/18/14 0600-1800</p>			
5. GENERAL CONTROL OBJECTIVES FOR THE INCIDENT Management Objectives: Provide for safety of responders and the public Ensure an appropriate evacuation and repopulation plan is in place and communicated Establish and maintain positive relationships with cooperating agencies and the public Provide timely and accurate incident information Protect economic and watershed values with safe and aggressive firefighting efforts Keep costs commensurate with values at risk Control Objectives: Keep fire North of Forebay Road and Highway 50 east of Pollock Pines Keep fire East of Pino Grande Keep fire West of Ice House Road Keep fire South of the Middle Fork of the American River			
6. WEATHER FORCAST FOR OPERATIONAL PERIOD <p style="text-align: center;">See Attached</p>			
7. GENERAL/SAFETY MESSAGE <p style="text-align: center;">See Attached</p>			
8. ATTACHMENTS (X IF ATTACHED)			
<input checked="" type="checkbox"/> 202	<input checked="" type="checkbox"/> SAFETY MESSAGE / LCES	<input checked="" type="checkbox"/> TRANSPORTATION MAP	
<input checked="" type="checkbox"/> 203	<input checked="" type="checkbox"/> WEATHER	<input checked="" type="checkbox"/> INCIDENT MAP	
<input checked="" type="checkbox"/> 204	<input checked="" type="checkbox"/> AIR OPERATIONS SUMMARY	<input checked="" type="checkbox"/> FIRE BEHAVIOR	
<input checked="" type="checkbox"/> 205	<input checked="" type="checkbox"/> HUMAN RESOURCE	<input type="checkbox"/>	
<input checked="" type="checkbox"/> 206	<input checked="" type="checkbox"/> ICP / CAMP MAP	<input type="checkbox"/>	
<input checked="" type="checkbox"/> 214	<input checked="" type="checkbox"/> FIRE WEATHER	<input type="checkbox"/>	
ICS 202	9. PREPARED BY (PLANNING SECTION CHIEF)  Dennis Cooper / Jason Schillinger (t)	10. APPROVED BY (INCIDNET COMMANDER)  For: J. Giachino / J. Tyler / S. Millert (t)	

ORGANIZATION ASSIGNMENT LIST		Planning Ops	Don Smith / Jeb Pronto (t)
1. Incident Name		Deputy Ops	Charlie Blankenheim
KING		a. Branch I	
2. Date 9/17/14		Branch Director	Mike Webb
3. Time 2200		Division	AA Brian Mackwood
4. Operational Period Day Shift: September 18, 2014 0600-1800		Division	BB/CC Josh Taylor
Position	Name	Division	DD Jarrod Clinkenbeard
5. Incident Commander and Command Staff		b. Branch III	
Incident Commander	J. Giachino / J. Tyler / M. Cathy / S. Millert (t)	Branch Director	Don Forsythe
Deputy	Carlton Joseph	Division	A Barry Bierman
Safety Officer	Marty Hamel / Steve Ryberg / Charlotte Jordan	Division	D Joseph Fording
Information Officer	Steve Kliest / Mark Savage (t)	Division	G Kim Olson / David Buchanan
Liaison Officer	Rick Alpert / Ken Kuykenall (t)	Division	H Jason Lambirth
6. Agency Representative		c. Branch V	
El Dorado NF	Laurence Crabtree	Branch Director	Nickie Washington
USFS Agency Admin Rep	Richard Thornburgh	Division	J J. Snow / E. Stahlin / R. Gregor (t)
CAL FIRE AEU	Brian Estes	Division	M Fred Burris / Bryan Brazzeal
Cal OES	Gary Humphrey	Division	P Dana D'Andrea
Sacramento Municipal Utilities District	Jack Belnap / Jim Wilhelm	Division	S Michael Cherry / David Soldavini (t)
PG&E	Pam Purdee	d. Branch VII	
California Highway Patrol	Chris Sahagun	Branch Director	Kelli Martin / Sean Johnson
El Dorado Irrigation District	Dan Gibson	Division	T Michael Sweany / Jeff Goyings (t)
Sierra Pacific Industries	Rich Wade	Division	U Aaron Ufferback
7. Planning Section		Division	W Thomas Browning
Plans Chief	Dennis Cooper / Chris Post / Jason Schillinger (t)	Division	Y Brett Lomis
Resources Unit	R. Ashby / J. Switzler / J. Wilson / E. Matye (t)	Division	Scouting Justin Hanley / Shannon Myers
Situation Unit	T. Morelock / M. McHargue / A. Mitchell	e. Structure Group	
Human Resources	Marilyn Loughrey	East Group	Emmanuel Beckius
READ	Katy Parr	West Group	Ryan Avila
Fire Behavior	Shelly Crook / Denny O'Neil	f. Contingency Ops	
Meteorologist	Jason Clapp	Ops Chief	John Truett
GISS	Brad Weisshaupt / Eric Shreve (t)	Branch Director	Phil Veneris
CTSP	Jim Youngblood / Chris Crowder (t)	Group	Christopher Anthony
TNSP	Jim Mitchell (t)	g. Tactical Resource Coordinator	
8. Logistics Section		Group	R. Blair / R. Redinger / C. Mason / N. Rasner
Logistics Chief	H. Crane / D. Martin / D. Haston / K. Kumpe (t)	h. Staging	
Supply Unit	Michael Bradford	Manager	Joshua Kahn
Facilities Unit	Jim Eckroth / Wally Grogan	i. Air Operations	
Ground Support Unit	John Badaracco	Air Operations Branch Director	John Keesee
Medical Unit	Robert Russell	Air Support Supervisor	Craig Dado
Food Unit	Dennis Durham	Helicopter Coordinator	Lane Caldwell / John Chin
Receiving/Distribution	Joe McMahon	Heli Base Manager	Dave Bakken (t)
Communications Unit	Greg Ely / Tim Maguire (t)	10. Finance/Administration Section	
Ordering Manager	Sharon Porter / Jane Arteaga	Finance/Admin. Chief	Teresa Fork / Peter Bymers
9. Operations Section		Cost Appr.	Jan Zacharias
Ops Chief	Keith Gurrola / Steve Burns (t)	Time Unit	Janice Brown (t)
		Procurement Unit	
		Compensation/Claims Unit	Elaine Downing
		Cost Unit	Roger Siemens
		Personnel Time Recorder	Debra Luna (t)
		Prepared by (Resource Unit Leader) Eric Matye (t) 	



FIRE WEATHER FORECAST



FORECAST NO: 4
PREDICTION FOR: Thursday Day SHIFT

INCIDENT NAME: King Fire
UNIT: Eldorado National Forest

SHIFT DATE: 18 September 2014

SIGNED: *Jason Clapp*

TIME AND DATE
FORECAST ISSUED: 2100 / 17 September 2014

Jason Clapp
Incident Meteorologist

WEATHER TODAY: ****Gusty SSW ridge winds & Potential erratic winds from any outflows****

WEATHER: The upper Low is over the coast with a chance of showers being late in the morning with potential thunderstorms in the afternoon/evening. Expect cooler temps/higher RH due to upper Low and clouds. Increased mixing will allow inversion to break sooner..

TEMPERATURES: 75-80 *Trend: Down 6 – 8*
RELATIVE HUMIDITY: 30-40% *Trend: Up 8 – 12%*

20 FT WINDS:

RIDGETOP - SE 5-9 mph early in the morning. After 0900 – S 6-10 mph gusts 15 mph increasing to 20-25 mph early to mid afternoon.

SLOPE/VALLEY - Downslope 3-5 mph & downcanyon 5-8 mph, shifting upslope/upcanyon 4-7 mph after 0800, increasing to 6-9 mph with gusts 15 mph in aligned canyons...Rubicon upper slopes gusting to 20 mph.

LAL: 1...2 afternoon **STABILITY/INVERSION:** Inversion breaking between 0900-1100.

AVIATION: Partly cloudy with improving visibility after 1000 due to smoke. Cleanest air north/east flank in morning, west/south in afternoon.

8000 MSL FL winds: S 15-20 knots.

WEATHER DISCUSSION: . The upper Low moves over the coast today with continued breezy ridge winds and increasing clouds. Continued breezy wind today with potential 20% chance of showers/thunderstorms. Friday and Saturday, the Low moves southeast bringing NW to NE ridge winds.

WEATHER FOR THURSDAY NIGHT: Mostly cloudy with smoke settling in after 2100.

Low temperatures: Thermal belts/ridges 60-65...Valleys 55-60.

Max RH: Thermal belts/ridges 45-50... Valleys 60-70%.


20FT Winds:

Ridge – S 3-5 mph shifting NE after 2100.

Slope/valley - Downslope 3-5 mph. Downcanyon wind gusts 5-9 mph after 2400.

OUTLOOK FOR FRIDAY: Low drifts south of the fire with warming temps, lowering RH, and a partly cloudy sky. **High temps:** 80-84. **Min RH:** 27-35%. **Ridge winds:** Battling winds from ENE 4-7 on east side and WNW 3-6 on west side with westerly afternoon gusts to 12 mph. **Valley/Slope winds:** Downslope 4-7 mph shifting upslope/upcanyon 4-8 mph by late morning.

FIRE BEHAVIOR FORECAST

FORECAST NUMBER: 4	TYPE OF FIRE: Wildfire
FIRE NAME: King Incident CA-ENF-023461	OPERATIONAL PERIOD: 9/18/2014 (0600 -1800)
DATE ISSUED: 9/17/14	TIME ISSUED: 2100 hours
UNIT: ENF	SIGNED: Denny O'Neil (FBAN) 

INPUTS

WEATHER SUMMARY-SEE ATTACHED FIRE WEATHER FORECAST

An upper level low over the coast gives us a chance of showers late in the morning with potential thunderstorms in the afternoon. Expect cooler temps and higher RH's. Inversion should break early.

Temperatures 75-80 Down 6-8 from yesterday

Relative Humidity: 30-40 % Trend up 8-12%

20 FT RIDGETOP WINDS: SE 5-9 mph early in the morning. After 0900-S 6-10 mph, gusts 15 mph increasing to 20-25 mph early to mid afternoon.

20 FT SLOPE/VALLEY WINDS: Downslope 3-5 mph & downcanyon 5-8 mph, shifting upslope/upcanyon 4-7 mph after 0800, increasing to 6-9 mph with gusts t15 mph in aligned canyons..Rubicon upper slopes gusting to 20 mph.

FUELS –The primary carrier of fire is timber. The fire area has many areas with fuel treatments and timber operations, which have created open and closed canopies and understories of grass, regeneration and brush. There are also areas of brush and grass. The only significant fire history is on the western perimeter of the fire where the 1992 Cleveland Fire Burned. *Live and dead fuels are at critically low levels!*

FIRE DANGER INDICES-Thresholds for Active Fire Behavior in the King Fire area (Eldorado NF PocketCard):
* 20ft Winds (over 5 mph), *RH (under 22%), *Temperature (over 84°) and *1000hr FMC (under 9%).

OUTPUTS

FIRE BEHAVIOR SPECIFIC

CRITICAL BURN PERIOD = 0900 - 2000 hours

LIVE FUEL MOISTURE = Below Critical Threshold

RATE OF SPREAD= 20- 30 Chains/Hour

POTENTIAL FOR SPOTTING = Moderate-High

SPOTTING DISTANCE = 1/4-1/2 Mile

FLAME LENGTHS= 1-10 ft

Branch I- South winds will be favorable for holding completed fireline on the SW side of branch. Monitor interior islands and unburned fuels adjacent to control lines. Unmitigated hot spots in these areas have the potential to create flare ups that can loft embers over control lines.

Branch III- Expect flanking fire behavior as the fire moves down into the Slab Creek Drainage. If the fire establishes in the drainage, there is the potential for upslope runs towards Slate Mountain and Mosquito Road. South winds will be favorable for keeping the fire north of the communities to the Southwest.

Branch V- The fire will continue to burn to the N and NW towards Ralson Ridge. Expect single and group tree torching. The fire could reach Ralson Ridge by the end of the operational period. Expect the fire to continue to burn to the NE from Silver Creek up Government Ridge toward Hunter Valley.

Branch VII- SW winds could create adverse conditions for holding firing operations. Monitor for spotting.

AIR OPERATIONS

Inversion should lift early. Expect heavy smoke to the North and NW of the fire, which will limit operations.

Sunrise 0647 hours

Sunset 1906 hours

SAFETY

- Dead and live fuels are at critical levels. Alignment of fuels with topography or wind can initiate a rapid change in fire behavior.
- When developing strategies and tactics, safety zones and escape routes you should be evaluating potential fire behavior (worst case scenario), not just observed fire behavior.

Division Assignment List	1. Branch I	2. Division/Group AA
---------------------------------	-----------------------	--------------------------------

3. Incident Name ENF KING	4. Operational Period 09/18/14 Thursday Day Shift 0600 - 1800
-------------------------------------	---

5. **Operations Personnel**

Operations Chief	KEITH GURROLA; STEVE BURNS (t)	Division/Group Supervisor	BRIAN MACKWOOD
Operations Chief	CHARLIE BLANKENHIEM	Air Attack Supervisor	
Branch Director	MICHAEL WEBB	Safety Officer	MARTIN HAMEL; STEVE RYBERG

6. **Resources Assigned this Period**

Strike Team/Task Force/ Resource Designator	Leader	Num of Pers.	Trans. Y/N	Drop Off PT./Time	Pick Up PT./Time
CRW S/T 9374G C-69*	Anthony Bertrand	33	N	0600	0600
CRW1 S/T 9124G C-72*	Matthew Carter	34	N	0600	0600
CRW1 S/T 9225G C-71*	Steve Diaz	35	N	0600	0600
ENG S/T SLU 9340C E-183*	Steve Crawford	22	N	0600	0600
ENG S/T OES 4812A E-94*	Steve Dunn	22	N	0600	0600
DOZ T2 G&O BODY SHOP E-195*	Gary Cooper	1	N	0600	0600
DOZ T2 BRAD INGRAM CONST E-49*	Brad Ingram	3	N	0600	0600
DOZ T2 A & F E-44*	Ryan Coe	3	N	0600	0600
DOZ T2 E-41*	Ryan Groteguth	2	N	0600	0600
DOZ T2 S/T LNU 9145L E-193*	Doug Jones	5	N	0600	0600
WT ENF E-22*	Kimber Baker	2	N	0600	0600
WT T1 GOT WATER E-254*	Gary Reynolds	2	N	0600	0600
WT RODGERS AWD E-10*	Buddy Rodgers	2	N	0600	0600
WT RAYMOND REYES E-14	Raymond Reyes	1	N	0600	1800
WT T1 ANDERSON WATER TR E-262	Robert Anderson	1	N	0600	1800
HEQB O-295	Louis Ermingarat	1	N	0600	1800
SOFR O-320	Mike Waters	1	N	0600	1800

7. Control Operations

Construct line to the Branch I/VII break.

8. Special Instructions

Noxious weeds are marked by orange "noxious weed" flagging. Minimize or avoid activities in these areas.
 Sensitive areas are marked with pink/black checkerboard flagging. Minimize ground disturbing activities in these areas.

* Indicates a 24 hour resource 0600-0600

9. **Division/Group Communications Summary**

Function	Frequency - RX	Frequency - TX	Tone	System	Channel	System	Channel
Command	167.1000	169.7500	146.2	NIFC C5	1		
Tactical Div/Group	168.0500	168.0500		NIFC T1	4		
Logistics							
Air to Ground	169.1500	169.1500		A/G CMD	13		

Prepared by (Resource Unit Leader) J. Wilson / J. Switzler / E. Matye (t)	Approved by (Planning Section Chief) Dennis Cooper / Jason Schillinger (t)	Date Prepared 09/17/14	Time Prepared 1245
--	---	---------------------------	-----------------------

Division Assignment List	1. Branch I	2. Division/Group BB/CC
---------------------------------	-----------------------	-----------------------------------

3. Incident Name ENF KING	4. Operational Period 09/18/14 Thursday Day Shift 0600 - 1800
-------------------------------------	---

5. Operations Personnel			
Operations Chief	KEITH GURROLA; STEVE BURNS (t)	Division/Group Supervisor	JOSH TAYLOR
Operations Chief		Air Attack Supervisor	
Branch Director	MICHAEL WEBB	Safety Officer	MARTIN HAMEL; STEVE RYBERG

6. Resources Assigned this Period					
Strike Team/Task Force/ Resource Designator	Leader	Num of Pers.	Trans. Y/N	Drop Off PT./Time	Pick Up PT./Time
CRW1 S/T 9223G C-73*	Pat Benninghoven	38	N	0600	0600
CRW1 S/T 9227G C-68*	Ryan Thomas	33	N	0600	0600
ENG S/T TCU 9441C E-186*	Nick Casci	19	N	0600	0600
ENG S/T MMU 9421C E-184*	Jeffrey McCarroll	17	N	0600	0600
ENG S/T SCU 9161C E-179*	Michael Marcucci	23	N	0600	0600
WT T2 TNF 22 E-34*	Christopher Low	2	N	0600	0600
WT T2 HAYS E-33*	Joe Pearce	2	N	0600	0600
WT T2 PRICE MAILLOUX E-12*	Ed Orpurt	2	N	0600	0600
WT T2 OES 41 E-270*	Matt Belleci	2	N	0600	0600
WT T2 2FUMTLY E-7	Eric Starks	1	N	0600	1800
WT T2 WATERBOYS E-11	Gordon Winget	1	N	0600	1800
WT T2 SUPPORT E-23	Scott Harvey	1	N	0600	1800
WT T2 E-25	Quentin Failing	1	N	0600	1800
WT T2 BOWNE WATER E-2	Michael Brown	1	N	0600	1800

7. Control Operations
Mop up 100' along lines and around structures. Improve line to the DD break.

8. Special Instructions
Identify resources to respond for initial attack.
Noxious weeds are marked by orange "noxious weed" flagging. Minimize or avoid activities in these areas.
Sensitive areas are marked with pink/black checkerboard flagging. Minimize ground disturbing activities in these areas.

* Indicates a 24 hour resource 0600-0600

9. Division/Group Communications Summary							
Function	Frequency - RX	Frequency - TX	Tone	System	Channel	System	Channel
Command	167.1000	169.7500	146.2	NIFC C5	1		
Tactical Div/Group	168.2000	168.000		NIFC T2	5		
Logistics							
Air to Ground	169.1500	169.1500		A/G CMD	13		

Prepared by (Resource Unit Leader) J. Wilson / J. Switzler / E. Matye (t)	Approved by (Planning Section Chief) Dennis Cooper / Jason Schillinger (t)	Date Prepared 09/17/14	Time Prepared 1246
--	---	---------------------------	-----------------------

Division Assignment List	1. Branch I	2. Division/Group DD
---------------------------------	-----------------------	--------------------------------

3. Incident Name ENF KING	4. Operational Period 09/18/14 Thursday Day Shift 0600 - 1800
-------------------------------------	---

5. Operations Personnel			
Operations Chief	KEITH GURROLA; STEVE BURNS (t)	Division/Group Supervisor	JARROD CLINKENBEARD
Operations Chief	CHARLIE BLANKENHEIM	Air Attack Supervisor	
Branch Director	MIKE WEBB	Safety Officer	MARTIN HAMEL; STEVE RYBERG

6. Resources Assigned this Period					
Strike Team/Task Force/ Resource Designator	Leader	Num of Pers.	Trans. Y/N	Drop Off PT./Time	Pick Up PT./Time
DOZ T2 AEU 2744*	Doug Granbois			0600	0600
DOZ T2 2741 E-192*	Mike Pinochi	2	N	0600	0600
DOZ T2 MORRISON E-46*	John Morrison	2	N	0600	0600
DOZ T2 BORDGES N0151 E-98*	Tim Bordges	2	N	0600	0600
DOZ T2 PAT DENIS EQUIP E-216*	Pat Denis	3	N	0600	0600
DOZ T2 NORTHSTATE E-48	Landon Rosencrans	2	N	0600	1800
WT T3 BOWNE E-7	Eric Starks	1	N	0600	1800
WT T2 WILBURN CONST E-31	Don Nelson	1	N	0600	1800
WT T2 BOWNE E-2	Michael Bowne	2	N	0600	1800
HEQB	Richard Noggles	1	N	0600	1800
FEMP	Damien Criner	1	N	0600	1800
FEMT	Dwight Lindsey	1	N	0600	1800
FOBS	Patrick McDaniel	1	N	0600	0600
FOBS	James Maloney	1	N	0600	1800

7. Control Operations

Construct direct and indirect line from the DD and BB/CC break to the Branch I/III break.

8. Special Instructions

Identify resources to respond for initial attack.
 Noxious weeds are marked by orange "noxious weed" flagging. Minimize or avoid activities in these areas.
 Sensitive areas are marked with pink/black checkerboard flagging. Minimize ground disturbing activities in these areas.

* Indicates a 24 hour resource 0600-0600

9. Division/Group Communications Summary							
Function	Frequency - RX	Frequency - TX	Tone	System	Channel	System	Channel
Command	167.1000	169.7500	146.2	NIFC C5	1		
Tactical Div/Group	166.7250	166.7250		NIFC T5	6		
Logistics							
Air to Ground	169.1500	169.1500		A/G CMD	13		
Prepared by (Resource Unit Leader) J. Wilson / J. Switzler / E. Matye (t)		Approved by (Planning Section Chief) Dennis Cooper / Jason Schillinger (t)		Date Prepared 09/17/14		Time Prepared 1247	

Division Assignment List	1. Branch III	2. Division/Group A
---------------------------------	-------------------------	-------------------------------

3. Incident Name ENF KING	4. Operational Period 09/18/14 Thursday Day Shift 0600 - 1800
-------------------------------------	---

5. Operations Personnel

Operations Chief	KEITH GURROLA; STEVE BURNS (t)	Division/Group Supervisor	BARRY BIERMANN
Operations Chief	CHARLIE BLANKENHIEM	Air Attack Supervisor	
Branch Director	DON FORSYTH	Safety Officer	MARTIN HAMEL; STEVE RYBERG

6. Resources Assigned this Period

Strike Team/Task Force/ Resource Designator	Leader	Num of Pers.	Trans. Y/N	Drop Off PT./Time	Pick Up PT./Time
CRW T1 RUBY MOUNTAIN IHC C-102	Craig Cunningham	18	N	Quintette 0800	1800
CRW T1 MODOC IHC C-95	Willie Almand	20	N	Quintette 0800	1800
CRW S/T 9252G C-84*	Felix Berbena	36	N	Quintette 0800	0600
CRW S/T 9488G C-76*	Elliot Maiorana	36	N	Quintette 0800	0600
ENG S/T 2812A E-97*	John Healy	22	N	Quintette 0800	0600
ENG S/T 9221C E-180*	Adam Mattos	19	N	Quintette 0800	0600
ENG S/T 2397C E-154*	Sean Lacy	21	N	Quintette 0800	0600
ENG S/T 9271C E-19*	Robert Counts	18	N	Quintette 0800	0600
ENG S/T 2310C E-187*	Gary Cocroft	22	N	Quintette 0800	0600
ENG S/T 6220C E-305	Thomas Hannemann	20	N	Quintette 0800	1800
ENG S/T 6440C E-91	Brad Rushing	18	N	Quintette 0800	1800
DOZ T2 2142 E-199*	Corey Wolter	3	N	Quintette 0800	0600
DOZ T2 2544 E-200*	Cliff Wilbanks	2	N	Quintette 0800	0600
DOZ T2 2444 E-201*	Clay Norman	2	N	Quintette 0800	0600
WT T1 28 E-249*	Kyle Nielson	3	N	Quintette 0800	0600
WT ENF E-8*	Doug Hill	2	N	Quintette 0800	0600
HEQB O-102	Michael Dolan	1	N	Quintette 0800	1800
FOBS O-454	ROBERT OLDS	1	N	Quintette 0800	1800
FOBS O-118	TIM BRADLEY	1	N	Quintette 0800	1800

7. Control Operations

Construct line and provide for structure defense adjacent to the communities at risk from the Branch I/III break to the Division A/D break.

8. Special Instructions

Identify resources to respond for initial attack.
 Noxious weeds are marked by orange "noxious weed" flagging. Minimize or avoid activities in these areas.
 Sensitive areas are marked with pink/black checkerboard flagging. Minimize ground disturbing activities in these areas.

* Indicates a 24 hour resource 0600-0600

9. Division/Group Communications Summary

Function	Frequency - RX	Frequency - TX	Tone	System	Channel	System	Channel
Command	167.1000	169.7500	146.2	NIFC C5	1		
Tactical Div/Group	166.7750	166.7750		NIFC T6	7		
Logistics							
Air to Ground	169.1500	169.1500		A/G CMD	13		

Prepared by (Resource Unit Leader) J. Wilson / J. Switzler / E. Matye (t)	Approved by (Planning Section Chief) Dennis Cooper / Jason Schillinger (t)	Date Prepared 09/17/14	Time Prepared 1248
---	--	----------------------------------	------------------------------

Division Assignment List		1. Branch III		2. Division/Group D			
3. Incident Name ENF KING		4. Operational Period 09/18/14 Thursday Day Shift 0600 - 1800					
5. Operations Personnel							
Operations Chief	KEITH GURROLA; STEVE BURNS (t)		Division/Group Supervisor	JOSEPH FORDING			
Operations Chief	CHARLIE BLANKENHEIM		Air Attack Supervisor				
Branch Director	DON FORSYTH		Safety Officer	MARTIN HAMEL; STEVE RYBERG			
6. Resources Assigned this Period							
Strike Team/Task Force/ Resource Designator	Leader	Num of Pers.	Trans. Y/N	Drop Off PT./Time	Pick Up PT./Time		
CRW T1 KLAMATH IHC C-91	Johnny Clem	18	N	Quintette 0800	1800		
CRW T1 ELDORADO IHC C-85	William Harris	20	N	Quintette 0800	1800		
CRW T2IA FIRESTORM WFS IN C-24	Andaverde Rodolfo	20	N	Quintette 0800	1800		
CRW T2IA GFP ENTERPRISES C-25	Jason Campbell	20	N	Quintette 0800	1800		
ENG S/T XSA 4160C E-165*	Ron Denny	17	N	Quintette 0800	0600		
ENG S/T SKU 9261C E-181*	Ivan Kaufner	17	N	Quintette 0800	0600		
ENG S/T OES 2811A E-96*	Herb Shoemaker	22	N	Quintette 0800	0600		
ENG T6 PAULA HOLTER E-333	Paula Holth	3	N	Quintette 0800	1800		
ENG T6 PAULA HOLTER E-334*	Chuck Newberry	3	N	Quintette 0800	0600		
ENG T6 PAULA HOLTER E-335	Don Helter	3	N	Quintette 0800	1800		
ENG S/T OES 4813A E-95	Sean Bailey	17	N	Quintette 0800	1800		
WT T2 WATERWAGONS E-256*	Randy Auker	2	N	Quintette 0800	0600		
WT T1 T&S DVBE INC E-274*	Paul Swartz	2	N	Quintette 0800	0600		
WT T1 T&S DVBE E-275*	Bob Forde	2	N	Quintette 0800	0600		
WT T2 WATERBOYS E-1	Robert Keene	1	N	Quintette 0800	1800		
WT T3 E-15	John Hertzig	1	N	Quintette 0800	1800		
WT T3 E-18	Hoyt Baker	1	N	Quintette 0800	1800		
DOZ T2 E-194	Daniel Langenderfer	2	N	Quintette 0800	1800		
SOFR	John Martinez	1	N	Quintette 0800	1800		
7. Control Operations							
Construct line and provide for structure defense adjacent to communities at risk from the Division D/A break to the Division D/G break.							
8. Special Instructions							
Identify resources to respond for initial attack.							
Noxious weeds are marked by orange "noxious weed" flagging. Minimize or avoid activities in these areas.							
Sensitive areas are marked with pink/black checkerboard flagging. Minimize ground disturbing activities in these areas.							
* Indicates a 24 hour resource.							
9. Division/Group Communications Summary							
Function	Frequency - RX	Frequency - TX	Tone	System	Channel	System	Channel
Command	167.1000	169.7500	146.2	NIFC C5	1		
Tactical Div/Group	168.2500	168.2500		NIFC T7	8		
Logistics							
Air to Ground	169.1500	169.1500		A/G CMD	13		
Prepared by (Resource Unit Leader) J. Wilson / J. Switzler / E. Matye (t)		Approved by (Planning Section Chief) Dennis Cooper / Jason Schillinger (t)		Date Prepared 09/17/14		Time Prepared 1249	

Division Assignment List

1. Branch

III

2. Division/Group

G

3. Incident Name

ENF KING

4. Operational Period

09/18/14 Thursday Day Shift 0600 - 1800

5. Operations Personnel

Operations Chief	KEITH GURROLA; STEVE BURNS (t)	Division/Group Supervisor	KIM OLSON/DAVID BUCHANAN
Operations Chief	CHARLIE BLANKENHEIM	Air Attack Supervisor	
Branch Director	DON FORSYTHE	Safety Officer	MARTIN HAMEL; STEVE RYBERG

6. Resources Assigned this Period

Strike Team/Task Force/ Resource Designator	Leader	Num of Pers.	Trans. Y/N	Drop Off PT./Time	Pick Up PT./Time
CRW T1 TRINITY IHC C-7	Robert Reeves	21	N	Quintette 0800	1800
ENG S/T 9140C E-54*	Jim Vierra	16	N	Quintette 0800	0600
ENG S/T 2007C E-188*	Chuck Palmer	22	N	Quintette 0800	0600
DOZ T2 ALGERINE WEST E-211*	Monte West	2	N	Quintette 0800	0600
DOZ T2 JW MORRISON E-217*	Matthew Morrison	2	N	Quintette 0800	0600
DOZ T2 LENAHN'S WATER E-212*	John Montz	2	N	Quintette 0800	0600
DOZ T2 PRO DUMP & EX E-204*	Tom Mchuliffe	2	N	Quintette 0800	0600
DOZ T2 PRO DUMP & EX E-205*	Ed Smith	2	N	Quintette 0800	0600
DOZ T2 YTS E-197*	Richard Jaugch	2	N	Quintette 0800	0600
DOZ T2 KRAMER E-35*	Kurt Kramer	2	N	Quintette 0800	0600
DOZ T2 1540 E-148*	Michael Waters	2	N	Quintette 0800	0600
DOZ T2 AAA EQUIP E-207*	Brendon Simunaci	2	N	Quintette 0800	0600
DOZ T2 TEHAMA TRANS E-208*	Toby Adams	2	N	Quintette 0800	0600
DOZ T2 BEN'S TRUCK & EQU E-100	Greg McCart	2	N	Quintette 0800	1800
DOZ T2 BEN'S TRUCK & EQU E-103	John Bradely	4	N	Quintette 0800	1800
READ	Dan Teator	1	N	Quintette 0800	1800
ARCH	Dorit Buckley	1	N	Quintette 0800	1800
READ	Blake Engelhardt	1	N	Quintette 0800	1800
READ	Nick Jarvis	1	N	Quintette 0800	1800
READ	Eric Nicita	1	N	Quintette 0800	1800

7. Control Operations

Construct line from the Division D/G break to the Division G/H break.

8. Special Instructions

Identify resources to respond for initial attack.

Noxious weeds are marked by orange "noxious weed" flagging. Minimize or avoid activities in these areas.

Sensitive areas are marked with pink/black checkerboard flagging. Minimize ground disturbing activities in these areas.

* Indicates a 24 hour resource 0600-0600

9. Division/Group Communications Summary

Function	Frequency - RX	Frequency - TX	Tone	System	Channel	System	Channel
Command	167.1000	169.7500	146.2	NIFC C5	1		
Tactical Div/Group	166.5500	166.5500		R5 T4	9		
Logistics							
Air to Ground	169.1500	169.1500		A/G CMD	13		

Prepared by (Resource Unit Leader)

J. Wilson / J. Switzler / E. Matye (t)

Approved by (Planning Section Chief)

Dennis Cooper / Jason Schillinger (t)

Date Prepared

09/17/14

Time Prepared

1249

Division Assignment List

1. Branch

III

2. Division/Group

H

3. Incident Name

ENF KING

4. Operational Period

09/18/14 Thursday Day Shift 0600 - 1800

5. Operations Personnel

Operations Chief	KEITH GURROLA;STEVE BURNS (t)	Division/Group Supervisor	JASON LAMBIRTH
Operations Chief	CHARLIE BLANKENHEIM	Air Attack Supervisor	
Branch Director	NICKIE WASHINGTON	Safety Officer	MARTIN HAMEL;STEVE RYBERG

6. Resources Assigned this Period

Strike Team/Task Force/ Resource Designator	Leader	Num of Pers.	Trans. Y/N	Drop Off PT./Time	Pick Up PT./Time
CRW T1 UKONOM IHC C-92	Keith Smith	19	N	Quintette 0800	1800
CRW T2IA CAC #4 C-16	Ron Brown	20	N	Quintette 0800	1800
CRW T1 SMITH RIVER IHC C-20	Tim Memmer	20	N	Quintette 0800	1800
ENG S/T XCO 3025C E-189	Jeff Gilert	17	N	Quintette 0800	1800
ENG S/T XTB 4228C E-168	Brad Zlendick	19	N	Quintette 0800	1800
WT T1 C&H VETERAN ENT E-252	James Caldwell	2	N	Quintette 0800	1800
WT T1 PRO DUMP E-278	Carlos Furtado	2	N	Quintette 0800	1800
WT T1 WATER BY CARMODY E-259	John Carmody	1	N	Quintette 0800	1800
WT T2 AWB INC. E-6	Lee Scroggins	1	N	Quintette 0800	1800
FEMP	Matt Cobb	1	N	Quintette 0800	1800
FEMP	John Daley	1	N	Quintette 0800	1800
SOFR	Rick Clark	1	N	Quintette 0800	1800
SOFR (t)	Mani Bouslaugh	1	N	Quintette 0800	1800

7. Control Operations

Construct indirect and direct lines from the Division G/H break to the Branch III/V break.

8. Special Instructions

Noxious weeds are marked by orange "noxious weed" flagging. Minimize or avoid activities in these areas.
 Sensitive areas are marked with pink/black checkerboard flagging. Minimize ground disturbing activities in these areas.

* Indicates a 24 hour resource 0600-0600

9. Division/Group Communications Summary

Function	Frequency - RX	Frequency - TX	Tone	System	Channel	System	Channel
Command	167.1000	169.7500	146.2	NIFC C5	1		
Tactical Div/Group	168.2375	168.2375		R5 T6	11		
Logistics							
Air to Ground	169.1500	169.1500		A/G CMD	13		

Prepared by (Resource Unit Leader) J. Wilson / J. Switzler / E. Matye (t)	Approved by (Planning Section Chief) Dennis Cooper / Jason Schillinger (t)	Date Prepared 09/17/14	Time Prepared 2016
--	---	---------------------------	-----------------------

Division Assignment List		1. Branch VII		2. Division/Group S			
3. Incident Name ENF KING		4. Operational Period 09/18/14 Thursday Day Shift 0600 - 1800					
5. Operations Personnel							
Operations Chief	KEITH GURROLA; STEVE BURNS (t)		Division/Group Supervisor	MICHAEL CHERRY D. SOLDAVINI (t)			
Operations Chief	CHARLIE BLANKENHEIM		Air Attack Supervisor				
Branch Director	KELLY MARTIN		Safety Officer	MARTIN HAMEL; STEVE RYBERG			
6. Resources Assigned this Period							
Strike Team/Task Force/ Resource Designator	Leader	Num of Pers.	Trans. Y/N	Drop Off PT./Time	Pick Up PT./Time		
CRW T1 STANISLAUS IHC C-2	Timothy Markin	20	N	0600	1800		
CRW T2IA HIG HIG C-9	Jd Ottman	20	N	0600	1800		
CRW T2IA MDS #3 C-15	Shannon Wolfe	20	N	0600	1800		
CRW T2IA PACIFIC OASIS C-26	Ken Wilson	16	N	0600	0600		
CRW T2IA NWS C-96	Andrew Siebach	18	N	0600	1800		
ENG S/T 3025C E-189*	Jeff Gilbert	17	N	0600	0600		
ENG S/T 4228C E-168*	Brad Zlendick	19	N	0600	0600		
ENG S/T 2870C E-88*	Tony Connell	22	N	0600	0600		
ENG S/T 2396C E-89*	Bob Norrbom	19	N	0600	0600		
DOZ T2 (CA-PNF) E-144	Scott Sibbald	3	N	0600	1800		
DOZ T2 (CA-PNF) E-145		2	N	0600	1800		
DOZ T2 CASHF 29 E-146*	Dave Brown	2	N	0600	0600		
WT T1 ARBOR TREE E-263*	Lu Estrada	2	N	0600	0600		
WT T1 EMERSON E-51*	Mel Emerson	2	N	0600	0600		
WT T1 E-258*	Richard Yost	2	N	0600	0600		
WT T1 ALL AGENCY E-253*	Doug Hill	2	N	0600	0600		
WT ENF 49ER E-3*	Bob Alvarez	2	N	0600	0600		
WT AWB E-13	Dab Brady	1	N	0600	1800		
HEQB O-241	Travis Orange	1	N	0600	1800		
THSP O-334	Vince Pacific	1	N	0600	1800		
7. Control Operations							
Construct indirect and direct line from the Division T/S break to the Branch V/VII break.							
8. Special Instructions							
Noxious weeds are marked by orange "noxious weed" flagging. Minimize or avoid activities in these areas.							
Sensitive areas are marked with pink/black checkerboard flagging. Minimize ground disturbing activities in these areas.							
* Indicates a 24 hour resource 0600-0600							
9. Division/Group Communications Summary							
Function	Frequency - RX	Frequency - TX	Tone	System	Channel	System	Channel
Command	167.1000	169.7500	146.2	NIFC C5	1		
Tactical Div/Group	168.2375	168.2375		R5 T6	11		
Logistics							
Air to Ground	169.1500	169.1500		A/G CMD	13		
Prepared by (Resource Unit Leader) J. Wilson / J. Switzler / E. Matye (t)		Approved by (Planning Section Chief) Dennis Cooper / Jason Schillinger (t)		Date Prepared 09/17/14		Time Prepared 2248	

Division Assignment List		1. Branch VII	2. Division/Group T
3. Incident Name ENF KING		4. Operational Period 09/18/14 Thursday Day Shift 0600 - 1800	

5. Operations Personnel			
Operations Chief	KEITH GURROLA; STEVE BURNS (t)	Division/Group Supervisor	MICHAEL SWEANY; JEFF GOYINGS
Operations Chief	CHARLIE BLANKENHEIM	Air Attack Supervisor	
Branch Director	NICKIE WASHINGTON	Safety Officer	MARTIN HAMEL; STEVE RYBERG

6. Resources Assigned this Period					
Strike Team/Task Force/ Resource Designator	Leader	Num of Pers.	Trans. Y/N	Drop Off PT./Time	Pick Up PT./Time
CRW T1 SAWTOOTH IHC C-89	Michael Krupski	20	N	Crystal Ranger sta 0800	1800
CRW T2IA OH OHS#3 C-17	Jeff Tucker	20	N	Crystal Ranger sta 0800	1800
CRW T2IA ASP FIRE C-23	Mike Denning	20	N	Crystal Ranger sta 0800	1800
CRW T2IA HEART LAKE C-97	Charles Lubchenko	18	N	Crystal Ranger sta 0800	1800
CRW UWF NORTHERN UTAH C-30	Josh Haen	20	N	Crystal Ranger sta 0800	1800
ENG S/T XSD 6417C E-173*	Bill Frederick	21	N	Crystal Ranger sta 0800	0600
ENG S/T BDC 6270C E-172*	Jeff Birchfield	20	N	Crystal Ranger sta 0800	0600
WT T1 WALTERS E-276*	Simon Prekowitz	2	N	Crystal Ranger sta 0800	0600
WT T1 PRO DUMP E-277*	Mike Willilams	2	N	Crystal Ranger sta 0800	0600
FEMP	Dave Pruit	1	N	Crystal Ranger sta 0800	1800
FEMP	Tim Moyles	1	N	Crystal Ranger sta 0800	1800
FEMP	Richard Edwards	1	N	Crystal Ranger sta 0800	1800
FEMT	Paul Salvestrin	1	N	Crystal Ranger sta 0800	1800

7. Control Operations

Construct indirect and direct lines from the Division U/T break to the Division S/T break.

8. Special Instructions

Identify resources to respond for initial attack.
 Noxious weeds are marked by orange "noxious weed" flagging. Minimize or avoid activities in these areas.
 Sensitive areas are marked with pink/black checkerboard flagging. Minimize ground disturbing activities in these areas.

* Indicates a 24 hour resource 0600-0600

9. Division/Group Communications Summary							
Function	Frequency - RX	Frequency - TX	Tone	System	Channel	System	Channel
Command	167.1000	169.7500	146.2	NIFC C5	1		
Tactical Div/Group	166.5500	166.5500		R5 T4	9		
Logistics							
Air to Ground	169.1500	169.1500		A/G CMD	13		

Prepared by (Resource Unit Leader) J. Wilson / J. Switzler / E. Matye (t)	Approved by (Planning Section Chief) Dennis Cooper / Jason Schillinger (t)	Date Prepared 09/17/14	Time Prepared 2016
--	---	---------------------------	-----------------------

Division Assignment List	1. Branch VII	2. Division/Group U
---------------------------------	-------------------------	-------------------------------

3. Incident Name ENF KING	4. Operational Period 09/18/14 Thursday Day Shift 0600 - 1800
-------------------------------------	---

5. Operations Personnel			
Operations Chief	KEITH GURROLA; STEVE BURNS (t)	Division/Group Supervisor	AARON UTTERBACK
Operations Chief	CHARLIE BLANKENHEIM	Air Attack Supervisor	
Branch Director	KELLY MARTIN	Safety Officer	MARTIN HAMEL; STEVE RYBERG

6. Resources Assigned this Period						
Strike Team/Task Force/ Resource Designator	Leader	Num of Pers.	Trans. Y/N	Drop Off PT./Time	Pick Up PT./Time	
CRW T1 CEDAR CITY IHC C-8	Brian Burbridge	19	N	Crystal Ranger sta 0800	1800	
CRW T2IA NAVAJO SCOUTS 1 C-101	Terry Tso	20	N	Crystal Ranger sta 0800	1800	
CRW T2 NAVAJO SCOUTS 2 C-4	John Alton	20	N	Crystal Ranger sta 0800	1800	
STOREY COUNTY - WT 71 E-124*	Toni Burton	2	N	Crystal Ranger sta 0800	0600	
WT T2 E-17*	Howard Elliot	2	N	Crystal Ranger sta 0800	0600	
WT T2 SIERRA E-27*	Robert Darling	2	N	Crystal Ranger sta 0800	0600	
WT T2 WATERBOYS E-4	Rich Harrison	10	N	Crystal Ranger sta 0800	1800	
WT T2 H&S TRANS E-30	Jarred Maylieg	1	N	Crystal Ranger sta 0800	1800	
WT T3 E-20 C	Jeff Epperson	1	N	Crystal Ranger sta 0800	1800	
FEMP	Richard Edwards	1	N	Crystal Ranger sta 0800	1800	
FEMT	Paul Salvestrin	1	N	Crystal Ranger sta 0800	1800	

7. Control Operations
Construct indirect and direct lines from the Division U/W break to the Division U/T break.

8. Special Instructions
Noxious weeds are marked by orange "noxious weed" flagging. Minimize or avoid activities in these areas.
Sensitive areas are marked with pink/black checkerboard flagging. Minimize ground disturbing activities in these areas.

* Indicates a 24 hour resource 0600-0600

9. Division/Group Communications Summary							
Function	Frequency - RX	Frequency - TX	Tone	System	Channel	System	Channel
Command	167.1000	169.7500	146.2	NIFC C5	1		
Tactical Div/Group	166.7250	166.7250		NIFC T5	6		
Logistics							
Air to Ground	169.1500	169.1500		A/G CMD	13		

Prepared by (Resource Unit Leader) J. Wilson / J. Switzler / E. Matye (t)	Approved by (Planning Section Chief) Dennis Cooper / Jason Schillinger (t)	Date Prepared 09/17/14	Time Prepared 1250
--	---	---------------------------	-----------------------

Division Assignment List		1. Branch VII		2. Division/Group W			
3. Incident Name ENF KING		4. Operational Period 09/18/14 Thursday Day Shift 0600 - 1800					
5. Operations Personnel							
Operations Chief	KEITH GURROLA; STEVE BURNS (t)		Division/Group Supervisor	THOMAS BROWNING			
Operations Chief	CHARLIE BLANKENHEIM		Air Attack Supervisor				
Branch Director	KELLY MARTIN		Safety Officer	MARTIN HAMEL; STEVE RYBERG			
6. Resources Assigned this Period							
Strike Team/Task Force/ Resource Designator	Leader	Num of Pers.	Trans. Y/N	Drop Off PT./Time	Pick Up PT./Time		
CRW T2IA RED ROCK C-39	Brandon Johnson	19	N	crystal ranger sta 0800	1800		
CRW T2 MQ FRANCO 13135 C-43	Andrew Henry	20	N	crystal ranger sta 0800	1800		
CRW S/T T1 9276G C-135*	Jon Wight	32	N	crystal ranger sta 0800	0600		
DOZ T2 HERTZIG E-206*	John Hertzig	1	N	crystal ranger sta 0800	0600		
DOZ T2 HERTZIG E-213*	Zack Gutzman	1	N	crystal ranger sta 0800	0600		
DOZ T2 SILLER BROTHERS E-45*	Ron Dow	2	N	crystal ranger sta 0800	0600		
DOZ T2 FIRELINE E-214*	Clint Larue	2	N	crystal ranger sta 0800	0600		
DOZ T2 ATLAS EQUIP 9 E-99*		3	N	crystal ranger sta 0800	0600		
DOZ T2 PAT BROWNING LOG E-40*	Pat Browning	2	N	crystal ranger sta 0800	0600		
DOZ T2 NORTHSTATE B41 E-47	Eric Spratt	2	N	crystal ranger sta 0800	1800		
DOZ T2 ROEN E-38	Paul Roen	2	N	crystal ranger sta 0800	1800		
DOZ T2 ROEN E-39	Paul Roen	2	N	crystal ranger sta 0800	1800		
DOZ T2 HERTZIG E-202	Dale Briski	1	N	crystal ranger sta 0800	1800		
WT T1 RIVER OAK E-260*	Paul Raine	2	N	crystal ranger sta 0800	0600		
WT T1 FLOODGATE H2O E-268*	Jessie Slotte	2	N	crystal ranger sta 0800	0600		
WT T1 RIVEROAK E-261*	Jeremy Fischer	2	N	crystal ranger sta 0800	0600		
WT T3 E-9*	Roger Borba	1	N	crystal ranger sta 0800	0600		
WT T1 GLAKELER E-267*	Mike Wilds	2	N	crystal ranger sta 0800	0600		
WT T3 SIERRA WATER E-16*	Brandon Hatler	2	N	crystal ranger sta 0800	0600		
WT T3 E-15*	John Hertzig	1	N	crystal ranger sta 0800	0600		
7. Control Operations							
Construct indirect and direct lines from the Division U/W break to the Division W/Y break.							
8. Special Instructions							
Noxious weeds are marked by orange "noxious weed" flagging. Minimize or avoid activities in these areas.							
Sensitive areas are marked with pink/black checkerboard flagging. Minimize ground disturbing activities in these areas.							
* Indicates a 24 hour resource 0600-0600							
9. Division/Group Communications Summary							
Function	Frequency - RX	Frequency - TX	Tone	System	Channel	System	Channel
Command	167.1000	169.7500	146.2	NIFC C5	1		
Tactical Div/Group	166.7750	166.7750		NIFC T6	7		
Logistics							
Air to Ground	169.1500	169.1500		A/G CMD	13		
Prepared by (Resource Unit Leader) J. Wilson / J. Switzler / E. Matye (t)		Approved by (Planning Section Chief) Dennis Cooper / Jason Schillinger (t)		Date Prepared 09/17/14		Time Prepared 2230	

Division Assignment List

1. Branch

VII

2. Division/Group

W Cont.

3. Incident Name

ENF KING

4. Operational Period

09/18/14 Thursday Day Shift 0600 - 1800

5. Operations Personnel

Operations Chief	KEITH GURROLA; STEVE BURNS (t)	Division/Group Supervisor	THOMAS BROWNING
Operations Chief	CHARLIE BLANKENHEIM	Air Attack Supervisor	
Branch Director	KELLY MARTIN	Safety Officer	MARTIN HAMEL; STEVE RYBERG

6. Resources Assigned this Period

Strike Team/Task Force/ Resource Designator	Leader	Num of Pers.	Trans. Y/N	Drop Off PT./Time	Pick Up PT./Time
WT T1 EL DORADO SUP E-5	Dennis Forni	1	N	Crystal Ranger Sta 0800	1800
HEQB	Casey Glines	1	N	Crystal Ranger Sta 0800	1800
HEQB	Ryan Anderson	1	N	Crystal Ranger Sta 0800	1800
HEQB	Michael Reimer	1	N	Crystal Ranger Sta 0800	1800
FOBS (t)	Gabriel Gamino	1	N	Crystal Ranger Sta 0800	1800
READ	Blake Engelhardt	1	N	Crystal Ranger Sta 0800	1800
ARCH	Katherine Klemic	1	N	Crystal Ranger Sta 0800	1800
ARCH	Jordan Serin	1	N	Crystal Ranger Sta 0800	1800
ARCH	Amber Lutsko	1	N	Crystal Ranger Sta 0800	1800
ARCH	Jesse Krautkramer	1	N	Crystal Ranger Sta 0800	1800
FOBS	Tim Meyers	1	N	Crystal Ranger Sta 0800	1800
FOBS	Dale Martin	1	N	Crystal Ranger Sta 0800	1800
SOFR	Randy Engler	1	N	Crystal Ranger Sta 0800	1800
SOFR (t)	Brian Hagen	1	N	Crystal Ranger Sta 0800	1800

7. Control Operations

Construct indirect and direct lines from the Division U/W break to the Division W/Y break.

8. Special Instructions

Noxious weeds are marked by orange "noxious weed" flagging. Minimize or avoid activities in these areas.
 Sensitive areas are marked with pink/black checkerboard flagging. Minimize ground disturbing activities in these areas.

* Indicates a 24 hour resource 0600-0600

9. Division/Group Communications Summary

Function	Frequency - RX	Frequency - TX	Tone	System	Channel	System	Channel
Command	167.1000	169.7500	146.2	NIFC C5	1		
Tactical Div/Group	166.7750	166.7750		NIFC T6	7		
Logistics							
Air to Ground	169.1500	169.1500		A/G CMD	13		

Prepared by (Resource Unit Leader)
 J. Wilson / J. Switzler / E. Matye (t)

Approved by (Planning Section Chief)
 Dennis Cooper / Jason Schillinger (t)

Date Prepared
 09/17/14

Time Prepared
 1251

Division Assignment List

1. Branch

VII

2. Division/Group

Y

3. Incident Name

ENF KING

4. Operational Period

09/18/14 Thursday Day Shift 0600 - 1800

5. Operations Personnel

Operations Chief	KEITH GURROLA; STEVE BURNS (t)	Division/Group Supervisor	BRETT LOOMIS
Operations Chief	CHARLIE BLANKENHEIM	Air Attack Supervisor	
Branch Director	KELLY MARTIN	Safety Officer	MARTIN HAMEL; STEVE RYBERG

6. Resources Assigned this Period

Strike Team/Task Force/ Resource Designator	Leader	Num of Pers.	Trans. Y/N	Drop Off PT./Time	Pick Up PT./Time
CRW T1 IDAHO CITY IHC C-88	Ralph Lamb	22	N	Crystal Ranger Sta 0800	1800
CRW T1 AMERICAN RIVER IHC C-87	Adam Leyba	20	N	Crystal Ranger Sta 0800	1800
CRW T2IA WIC#7 C-18	Damon Panek	19	N	Crystal Ranger Sta 0800	1800
CRW T2IA MNICS #7 C-19	Philip Millette	20	N	Crystal Ranger Sta 0800	1800
ENG S/T XSB 1521C E-90*	James McCoy	21	N	Crystal Ranger Sta 0800	0600
DOZ T2 BIG EDS CRANE E-210*	Rick Rodger	3	N	Crystal Ranger Sta 0800	0600
DOZ T2 DIAMOND RING E-102*	John Britton	2	N	Crystal Ranger Sta 0800	0600
DOZ T2 JOHN DE LA HUNT E-43	John De La Hunt	1	N	Crystal Ranger Sta 0800	1800
WT T2 STOX74 E-125	Derek Giurlani	2	N	Crystal Ranger Sta 0800	1800
WT T2 T3 Support E-21	Charlie Dietz	1	N	Crystal Ranger Sta 0800	1800
WT T2 Statewide E26	Steve Raddigan	1	N	Crystal Ranger Sta 0800	1800
WT A25383 E-72	Ron Belion	1	N	Crystal Ranger Sta 0800	1800
HEQB O-245	Alma Leithead	1	N	Crystal Ranger Sta 0800	1800
FEMP	Richard Edwards	1	N	Crystal Ranger Sta 0800	1800
FEMT	Paul Salvestrin	1	N	Crystal Ranger Sta 0800	1800

7. Control Operations

Construct indirect and direct lines from the Division W/Y break to the Branch VII/I break.

8. Special Instructions

Identify resources to respond for initial attack.

Noxious weeds are marked by orange "noxious weed" flagging. Minimize or avoid activities in these areas.

Sensitive areas are marked with pink/black checkerboard flagging. Minimize ground disturbing activities in these areas.

* Indicates a 24 hour resource 0600-0600

9. Division/Group Communications Summary

Function	Frequency - RX	Frequency - TX	Tone	System	Channel	System	Channel
Command	167.1000	169.7500	146.2	NIFC C5	1		
Tactical Div/Group	167.1125	167.1125		R5 T5	10		
Logistics							
Air to Ground	169.1500	169.1500		A/G CMD	13		

Prepared by (Resource Unit Leader)

J. Wilson / J. Switzler / E. Matye (t)

Approved by (Planning Section Chief)

Dennis Cooper / Jason Schillinger (t)

Date Prepared

09/17/14

Time Prepared

1251

Division Assignment List

1. Branch

2. Division/Group

EAST STRUCTURE

3. Incident Name

ENF KING

4. Operational Period

09/18/14 Thursday Day Shift 0600 - 1800

5. Operations Personnel

Operations Chief

KEITH GURROLA; STEVE BURNS (t)

Division/Group Supervisor

EMMANUEL BECKIUS

Operations Chief

CHARLIE BLANKENHEIM

Air Attack Supervisor

Branch Director

Safety Officer

MARTIN HAMEL; STEVE RYBERG

6. Resources Assigned this Period

Strike Team/Task Force/ Resource Designator	Leader	Num of Pers.	Trans. Y/N	Drop Off PT./Time	Pick Up PT./Time
ENG S/T XAL 2008A E-385*	Mike Hildebrand	22	N	0600	0600
ENG S/T XSL 1471C E-157*	Kevin Taylor	18	N	0600	0600

7. Control Operations

Respond as directed by structure operations throughout the incident area.

8. Special Instructions

Identify resources to respond for initial attack.
 Noxious weeds are marked by orange "noxious weed" flagging. Minimize or avoid activities in these areas.
 Sensitive areas are marked with pink/black checkerboard flagging. Minimize ground disturbing activities in these areas.

* Indicates a 24 hour resource 0600-0600

9. Division/Group Communications Summary

Function	Frequency - RX	Frequency - TX	Tone	System	Channel	System	Channel
Command	167.1000	169.7500	146.2	NIFC C5	1		
Tactical Div/Group	154.3025	154.3025	156.7	VFIRE 26	12		
Logistics							
Air to Ground	169.1500	169.1500		A/G CMD	13		

Prepared by (Resource Unit Leader)
 J. Wilson / J. Switzler / E. Matye (t)

Approved by (Planning Section Chief)
 Dennis Cooper / Jason Schillinger (t)

Date Prepared
 09/17/14

Time Prepared
 2044

Division Assignment List

1. Branch

2. Division/Group

WEST STRUCTURE

3. Incident Name

ENF KING

4. Operational Period

09/18/14 Thursday Day Shift 0600 - 1800

5. Operations Personnel

Operations Chief	KEITH GURROLA; STEVE BURNS (t)	Division/Group Supervisor	RYAN AVILA
Operations Chief	CHARLIE BLANKENHEIM	Air Attack Supervisor	
Branch Director		Safety Officer	MARTIN HAMEL; STEVE RYBERG

6. Resources Assigned this Period

Strike Team/Task Force/ Resource Designator	Leader	Num of Pers.	Trans. Y/N	Drop Off PT./Time	Pick Up PT./Time
ENG S/T OES 4811A E-93*	Scott Arganbright	21	N	0600	0600
ENG S/T OES 2813A E-384*	Thomas Siragusa	21	N	0600	0600
WT T1 G&G FIRE SUPP E-131*	Greg Whipple	4	N	0600	0600
WT T1 E-130*	Shane Sexton	4	N	0600	0600
WT T1 IDAHO PRECISION E-123*	Micky Raskelley	2	N	0600	0600
WT T1 SPECER IND E-126*	Steve Brooks	4	N	0600	0600

7. Control Operations

Respond as directed by structure operations throughout the incident area.

8. Special Instructions

Identify resources to respond for initial attack.
 Noxious weeds are marked by orange "noxious weed" flagging. Minimize or avoid activities in these areas.
 Sensitive areas are marked with pink/black checkerboard flagging. Minimize ground disturbing activities in these areas.

* Indicates a 24 hour resource 0600-0600

9. Division/Group Communications Summary

Function	Frequency - RX	Frequency - TX	Tone	System	Channel	System	Channel
Command	167.1000	169.7500	146.2	NIFC C5	1		
Tactical Div/Group	154.3025	154.3025	156.7	VFIRE 26	12		
Logistics							
Air to Ground	169.1500	169.1500		A/G CMD	13		

Prepared by (Resource Unit Leader) J. Wilson / J. Switzler / E. Matye (t)	Approved by (Planning Section Chief) Dennis Cooper / Jason Schillinger (t)	Date Prepared 09/17/14	Time Prepared 2044
--	---	---------------------------	-----------------------

AIR OPERATIONS SUMMARY OPERATIONAL PERIOD DATE: DAY SHIFT DATE: 09/18/2014 START: 0700 END: 2000

(Expanded Form for Large Operations)

1. INCIDENT NAME: King
 2. PREPARED BY: John Keesee *JK*
 3. Prepared 09/17/14 1930 hrs

4. REMARKS (Safety Notes, Hazards, Air Operations Special Equipment, etc.):
 STEEP SMOKEY CONDITIONS, OTHER FIRES, OTHER AIRCRAFT
 SUNRISE: 0647 SUNSET: 1908
 5. TFR: 4/6173
 Altitude : 9000'
 Freq. 118.6250
 See TFR map
 **Avoid aerial application of retardant or foam within 300' of waterways, bodies of water. If retardant is dropped within these areas, notify
 AOB with Lat & Long, est. of gallons, and a map.
 FAA tower in place at Placerville airport.
 Incident aircraft will support initial attack within and adjacent to the TFR.

6. PERSONNEL		FREQUENCIES		AM		FM	
AORD: John Keesee	805-551-6422	AIR/AIR FW:	118.6250	166.6750			
ASGS: Craig Dado	530-518-6688	AIR/AIR RW:	135.7250				
H/CO: Lane Caldwell	530-310-2211	A/G Command:	169.1500	167.9500			
H/CO: John Chin	760-250-6230	A/G Tactical:					
ATGS: Jason Withrow	530-206-6955	DECK:	163.100				
ATGS: Todd White	530-263-5621	COMMAND:	TX	RX			
HEBM: Travis Taylor (T)	208-241-0399	AIR GUARD:	168.625 Tone Tx 110.9				
HEBM: Todd Gilbreth	619-548-3729	TOWER:	119.100				
Grass Valley ATB	530-272-4952						
McClellan ATB	530-391-7514						

9. HELICOPTERS (Use Additional Sheets As Necessary)

FAA #	TY	MAKE/MODEL	BASE	AVAIL	START	REMARKS	FAA #	TY	MAKE/MODEL	BASE	AVAIL	START	REMARKS
301	3	BELL 206	PVF	0800	0700	Recon/Helco	HT 781	1	Skycrane	PVF	0800	0700	
54E	3	AS 350	PVF	0800	0700	Recon/Helco	HT 783	1	Skycrane	PVF	0800	0700	
67H	3	Bell 206	PVF	0800	0700	Recon/Helco	3CK	1	S-61	PVF	0800	0700	
510	2	Bell 210	PVF	0800	0700	Bucket/Shuttle	HT 734	1	Skycrane	GSV	0800	0700	
104	2	Bell 205	PVF	0800	0700	Bucket/Shuttle/Hoist	43T	1	S-61	GSV	0800	0700	
5DY	2	Bell 205	PVF	0800	0700	Bucket/Shuttle							
7HX	2	Bell 205	PVF	0800	0700	Bucket/Shuttle							
516	2	Bell 212HP	PVF	0800	0700	Bucket/Shuttle							
212AH	2	Bell 212	PVF	0800	0700	Bucket/Shuttle							
2TH	2	Bell 212	PVF	0800	0700	Bucket/Shuttle							

SAFETY MESSAGE

KING FIRE CA-ENF-023461

Day Shift 09/18/2014 0600 to 1800

EXTREME FIRE BEHAVIOR – Strong potential for very active to extreme fire behavior continues to persist on this incident. Monitor current weather conditions and be alert for radio updates from the incident meteorologist. Weather conditions that can affect fire behavior may change quickly. Maintain LCES and continually re-evaluate. Assure that all personnel have good communications. If you aren't in position to see the fire, who is your lookout???

DOING REPETITIVE TASKS:

- When we do a task repetitively, we start to overlook small hazards that can cause big problems. And,
- When we “get away with” risky behavior, we start to think that we will always have a positive outcome.
 - Both of these tendencies can lead us to an accident or injury.
 - No matter how repetitive or boring your assignment may be, remember that every day is a new opportunity to SEE small problems, ACT to prevent them from getting big, and COMMUNICATE within your crew and your supervisor.
 - With over 2,500 personnel assigned to a very complex incident, it is amazing that there has been only one reportable injury up to this point and a minor one at that. Keep up the good work!

SNAGS AND HAZARD TREES– Snags are in all divisions- in the green and in the black. If you're working on the same piece of ground today, perform a new hazard tree assessment and risk analysis before starting work. Are you parking your vehicle in a safe spot? Wear your hard hat & follow Hazard Tree Safety Guidelines (IRPG page 22).

ROADSIDE OPERATIONS

Exit vehicle from the passenger side and avoid exiting from traffic side if possible. Utilize “Look-First” Situational Awareness while loading and unloading vehicle. Assign a single person to unload equipment from traffic side of vehicle and instruct him/her to face traffic flow. Emphasize the need for extreme caution and to look both ways when walking between or in front of parked vehicles toward active traffic lanes. Many fatalities to responders at roadside incidents have resulted from inattention or casual attitudes.

STRESS THE CRITICAL IMPORTANCE OF SITUATIONAL AWARENESS TO ALL CREW MEMBERS!

ACCOUNTABILITY

- CONSTANTLY KNOW WHERE YOUR FOLKS ARE AT AND BE SURE THEY ALWAYS KNOW WHERE THEIR ESCAPE ROUTES AND SAFETY ZONES ARE LOCATED.

- ANYONE WHO ENTERS A DIVISION MUST NOTIFY THE DIVISION SUPERVISOR AND ALSO YOU MUST NOTIFY THE DIVISION AGAIN WHEN YOU DEPART THE DIVISION.

Safety Officers: Marty Hamel, Steve Ryberg & Charlotte Jordan (T)



Prepared By (Communications Unit)
Tim Maguire, COML (t) (408) 679-2305



9/17/2014 21:06

Ch	#	Function	Channel Name/Trunked Radio System Talkgroup	Assignment	RX Freq	RX Tone/NAC	TX Freq	Tx Tone/NAC	Remarks
INCIDENT RADIO COMMUNICATIONS PLAN Incident Name King Fire, CA-ENF-023461 Date/Time Prepared 9/17/2014, 2100 HRS Operational Period Date/Time DAY, 9/18/14									
1	Command	NIFC C5	All Divisions	167.1000	146.2	169.7500	146.2	Linked to all Commands	
2	Command	NIFC C12	All Divisions	173.0375	146.2	167.3250	146.2	Linked to all Commands	
3	Command	NIFC C37	All Divisions	172.5500	146.2	162.1875	146.2	Linked to all Commands	
4	Tactical	NIFC T1	DIV AA & J	168.0500		168.0500			
5	Tactical	NIFC T2	DIV BB / CC	168.2000		168.2000			
6	Tactical	NIFC T5	DIV DD & U	166.7250		166.7250			
7	Tactical	NIFC T6	DIV A & W	166.7750		166.7750			
8	Tactical	NIFC T7	DIV D & P	168.2500		168.2500			
9	Tactical	R5 T4	DIV G & T	166.5500		166.5500			
10	Tactical	R5 T5	DIV M & Y	167.1125		167.1125			
11	Tactical	R5 T6	DIV S & H	168.2375		168.2375			
12	Tactical	VFIRE 26	Structure Grp	154.3025	156.7	154.3025	156.7	East and West Structure Grps.	
13	Tactical	AG CMD	Air / Ground CMD	169.1500		169.1500		A 1	
14	Tactical	AG TAC	Air / Ground TAC	167.9500		167.9500		A 52	
15	Tactical	CALCORD	Medical	156.0750	156.7	156.0750	156.7	Medical Coordination	
16	Emergency Only	Guard	Incident	168.6250		168.6250	110.9	Emergency only	
Incident Location: Placerville, CA County: El Dorado Latitude, Longitude: 38°46.55' N, 120° 36.12' W									

MEDICAL PLAN

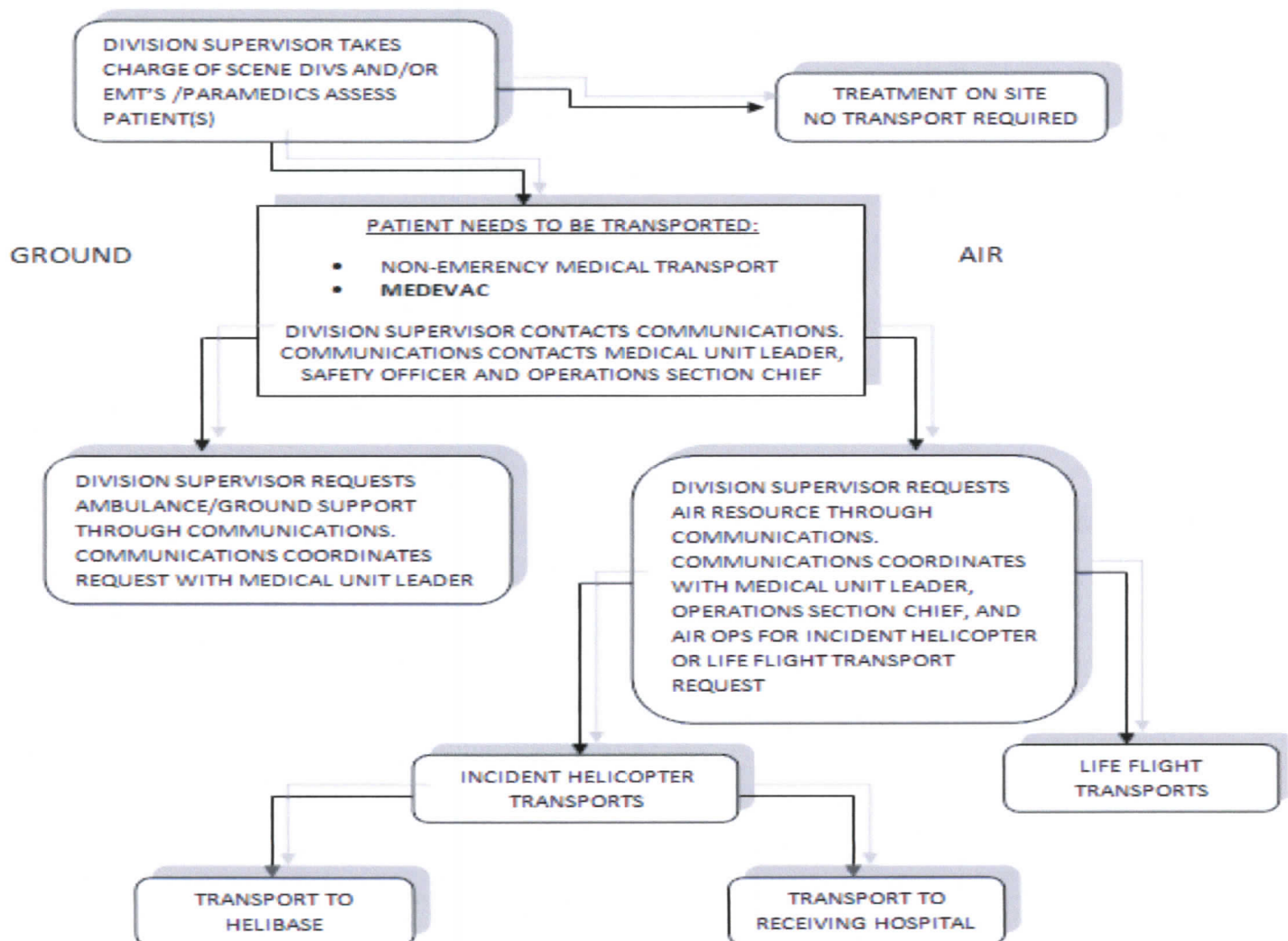
1. Incident/Project Name		2. Operational Period			
King Fire		Date/Time 9/18/2014 0600 - 1800 Day			
2. Aid Station					
Name	Complete Address	Phone & EMS Frequency	Advanced Life Support (ALS) Yes No		
King ICP	Eldorado County Fairgrounds 100 Placerville Dr. Placerville, CA 95667		None	None	
3. Ambulance Services					
Name	Complete Address	Phone & EMS Frequency	Advanced Life Support (ALS) Yes No		
Eldorado County Emergency Medical Services Medic 248	Eldorado County Fire Station 17 6426 Pony Express Trail Pollock Pines, CA	911 or 530-647-5220	XX		
4. Air Ambulance Services					
Name	Phone	Type of Aircraft & Capability			
CAL FIRE H-104 Placerville, CA	911	Bell 205++ Hoist, No NVG, BLS			
CHP H20 or H24 Auburn, CA	911- 916-861-1299	Eurocopter B3 Hoist, ALS, No NVG			
CALSTAR 3 Auburn, CA	911 or 530-887-0569	BO 105LS/C-30			
CAL STAR 6 South Lake Tahoe, CA	911 or 530-887-2338	BO 105LS/C-30			
5. Hospitals					
Name Complete Address	GPS Datum – NAD 83 Coordinate Standard Degrees Decimal Minutes DD° MM.MMM' N - Lat DD° MM.MMM' W - Long	Travel Time Air Gnd	Phone	Helipad Yes No	Level of Care Facility
Marshal Medical Center 1100 Marshall Way, Placerville, CA 95667	Lat: N/A Long: VHF: N/A	30 Min	(530) 622-1441	X	Level III Trauma Center
Sutter Roseville Medical Center 1 Medical Plaza Dr, Roseville, CA 95661	Lat: 38 45.58 Long: 121 14.52 VHF:	25 Min 1 Hr	(916) 781-1200	X <input type="checkbox"/>	Level II Trauma Center
UC Davis Medical Center 2315 Stockton Ave. Sacramento, CA 95817	Lat: 38 33.17 Long: 121 27.21 VHF:	25 Min 1.5 Hr	(916) 734-2363	X <input type="checkbox"/>	Level I Trauma Center Burn Center
Barton Memorial Hospital 2170 South Ave. South Lake Tahoe, CA 96158	Lat: 38 54.40 Long: 119 59.48 VHF:	30 Min 1 Hr	(530) 541-3420	X <input type="checkbox"/>	
Renown Regional Medical Center 1155 Mill St Reno, NV	Lat: 39 31 32 Long: 119 47 44 VHF:	45 Min 1.5 Hr	(775) 982-4100	X <input type="checkbox"/>	Level II Trauma Center Burn Center
6. Prepared By (Medical Unit Leader)					
Robert Russell MEDL	7. Date/Time 09/17/2014 1000	8. Reviewed By (Safety Officer) Marty Hamel SOF 1	9. Date/Time 09/17/2014 1000		

When an injury occurs, initiate care with available resources at scene and notify DIVS.

The DIVS shall coordinate the incident and direct necessary actions. The following steps shall be taken to mitigate the incident:

1. Determine the nature of the emergency.
2. If the emergency is a medical injury/illness, determine if the injury/illness is life threatening.
3. If the injury is life threatening, then clear designated frequency for emergency traffic.
4. Identify the on-scene point of contact by position.
5. Ensure that the Medical Unit Leader is contacted immediately.
6. Identify number injured, patient assessment(s) and location (geographic and/or GPS coordinates).
7. Identify on-scene medical personnel by position and last name (i.e. EMT Jones).
8. Identify preferred method of patient transport.
9. Determine any additional resources or equipment needed.

The Evacuation Plan should be continually evaluated, and contingencies developed in the event the first plan is not effective.



Medical Incident Report

FOR ALL MEDICAL EMERGENCIES: IDENTIFY ON SCENE INCIDENT COMMANDER BY NAME AND POSITION AND ANNOUNCE "MEDICAL EMERGENCY" TO INITIATE RESPONSE FROM IMT COMMUNICATIONS/DISPATCH.

Use items one through nine to communicate situation to communications/dispatch.

1. CONTACT COMMUNICATIONS/DISPATCH

Ex: "Communications, Div. Alpha. Stand-by for Priority Medical Incident Report." (If life threatening request designated frequency be cleared for emergency traffic.)

2. INCIDENT STATUS: Provide incident summary and command structure.

Nature of Injury/Illness		<i>Describe the injury (Ex: Broken leg with bleeding)</i>
Incident Name		<i>Geographic Name + "Medical" (Ex: Trout Meadow Medical)</i>
Incident Commander		<i>Name of IC</i>
Patient Care		<i>Name of Care Provider (Ex: EMT Smith)</i>

3. INITIAL PATIENT ASSESSMENT: Complete this section for each patient. This is only a brief, initial assessment. Provide additional patient info after completing this 9 Line Report.

Number of Patients:	Male / Female	Age:	Weight:
Conscious? <input type="checkbox"/> YES <input type="checkbox"/> NO = MEDEVAC!			
Breathing? <input type="checkbox"/> YES <input type="checkbox"/> NO = MEDEVAC!			
Mechanism of Injury: <i>What caused the injury?</i>			
Lat/Long (Datum WGS84) <i>Ex: N 40° 42.45' x W 123° 03.24'</i>			

4. SEVERITY OF EMERGENCY, TRANSPORT PRIORITY

SEVERITY	TRANSPORT PRIORITY
<input type="checkbox"/> URGENT-RED Life threatening injury or illness. <i>Ex: Unconscious, difficulty breathing, bleeding severely, 2° – 3° burns more than 4 palm sizes, heat stroke, disoriented.</i>	Ambulance or MEDEVAC helicopter. Evacuation need is IMMEDIATE.
<input type="checkbox"/> PRIORITY-YELLOW Serious Injury or illness. <i>Ex: Significant trauma, not able to walk, 2° – 3° burns not more than 1-2 palm sizes.</i>	Ambulance or consider air transport if at remote location. Evacuation may be DELAYED.
<input type="checkbox"/> ROUTINE-GREEN Not a life threatening injury or illness. <i>Ex: Sprains, strains, minor heat-related illness.</i>	Non-Emergency. Evacuation considered Routine of Convenience.

5. TRANSPORT PLAN:

Air Transport: (Agency Aircraft Preferred)

<input type="checkbox"/> Helispot	<input type="checkbox"/> Short-haul/Hoist	<input type="checkbox"/> Life Flight	<input type="checkbox"/> Other
-----------------------------------	---	--------------------------------------	--------------------------------

Ground Transport: [Click here to enter text.](#)

<input type="checkbox"/> Self-Extract	<input type="checkbox"/> Carry-Out	<input type="checkbox"/> Ambulance	<input type="checkbox"/> Other
---------------------------------------	------------------------------------	------------------------------------	--------------------------------

6. ADDITIONAL RESOURCE/EQUIPMENT NEEDS:

<input type="checkbox"/> Paramedic/EMT(s)	<input type="checkbox"/> Crew(s)	<input type="checkbox"/> SKED/Backboard/C-Collar
<input type="checkbox"/> Burn Sheet(s)	<input type="checkbox"/> Oxygen	<input type="checkbox"/> Trauma Bag
<input type="checkbox"/> Medication(s)	<input type="checkbox"/> IV/Fluid(s)	<input type="checkbox"/> Cardiac Monitor/AED
<input type="checkbox"/> Other (i.e. splints, rope rescue, wheeled litter)		

7. COMMUNICATIONS:

Function	Channel Name/Number	Receive (Rx)	Tone/NAC *	Transmit (Tx)	Tone/NAC *
<i>Ex: Command</i>	<i>Forest Rpt, Ch. 2</i>	<i>168.3250</i>	<i>110.9</i>	<i>171.4325</i>	<i>110.9</i>
COMMAND					
AIR-TO-GRND					
TACTICAL					

*(NAC for digital radio system)

8. EVACUATION LOCATION:

Lat/Long (Datum WGS84) <i>EX: N 40 42.45' x W 123 03.24'</i>	
Patient's ETA to Evacuation Location:	
Helispot/Extraction Size and Hazards:	

9. CONTINGENCY:

Considerations: *If primary options fail, what actions can be implemented in conjunction with primary evacuation method? Be thinking ahead...*

REMEMBER: Confirm ETA's of resources ordered
Act according to your level of training
Be Alert. Keep Calm. Think Clearly. Act Decisively.

Division - As Assigned	Area Location Capability	
Branch III	EMS Responders & Capability:	FEMP Matt Cobb, FEMP John Daley
	Equipment Available on Scene:	ALS/BLS supplies
	Medical Emergency Channel:	Calcord 156.0750 Tone 6 (156.7) tx/rx
	ETA for Ambulance to Scene:	
	Air:	
	Ground:	1 hr
	Approved Helispot:	None identified
	Lat:	
	Long:	
Branch V	Area Location Capability	
	EMS Responders & Capability:	FEMP Dave Pruit, FEMP Tim Moyles
	Equipment Available on Scene:	ALS/BLS supplies
	Medical Emergency Channel:	Calcord 156.0750 Tone 6 (156.7) tx/rx
	ETA for Ambulance to Scene:	
	Air:	
	Ground:	1 hr
	Approved Helispot:	None identified
	Long:	
Branch VII	Area Location Capability	
	EMS Responders & Capability:	FEMP Richard Edwards, FEMT Paul Salvestrin
	Equipment Available on Scene:	ALS/BLS supplies
	Medical Emergency Channel:	Calcord 156.0750 Tone 6 (156.7) tx/rx
	ETA for Ambulance to Scene:	
	Air:	
	Ground:	1 hr
	Approved Helispot:	None identified
	Long:	
Branch I, DIV DD	Area Location Capability	
	EMS Responders & Capability:	FEMT Dwight Lindsey, FEMP Damien Criner
	Equipment Available on Scene:	ALS/BLS supplies
	Medical Emergency Channel:	Calcord 156.0750 Tone 6 (156.7) tx/rx
	ETA for Ambulance to Scene:	
	Air:	
	Ground:	.5 hr
	Approved Helispot:	None identified
	Long:	
	Area Location Capability	
	EMS Responders & Capability:	
	Equipment Available on Scene:	
	Medical Emergency Channel:	
	ETA for Ambulance to Scene:	
	Air:	
	Ground:	
	Approved Helispot:	
	Long:	



FIRE ASSIGNMENT STRESSORS

- Environment – climate, altitude, air quality, noise levels and types, new fuel types and topography, different hazards such as bees, snakes, poison oak
- People – different supervisor, different co-workers, change in objectives, change in communications, working with contractors, working with other agencies, not always able to contact home
- Physical – sleeping patterns and conditions, eating patterns, demands of the work, dehydration, acclimatization, change in work schedule
- Safety – crew awareness, communication of hazards, exposure to new fuel types and weather patterns, lack of access to equipment and resources when needed

S STANDBACK: LOOK AT WHAT'S BOTHERING YOU, TAKE ANOTHER APPROACH

T TALK: ABOUT WHAT'S BOTHERING

R RELAX: TAKE WALKS, EXERCISE, DEEP BREATHS

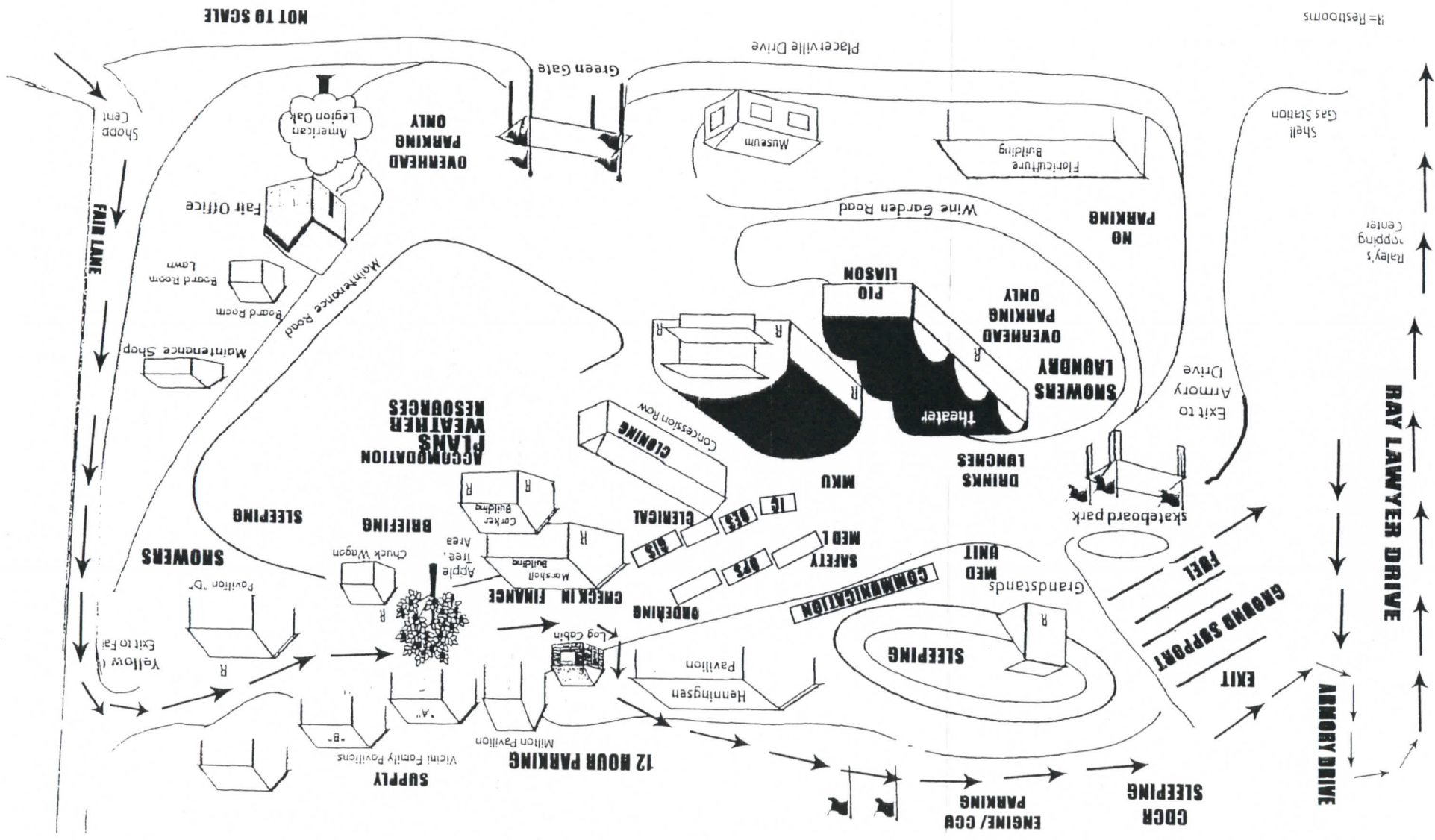
E ESCAPE: TAKE TIME OFF

S SCALE DOWN: REDUCE AMOUNTS OF CAFFINE, NICOTINES, SUGARS, ETC...

S SENSE OF HUMOR: LAUGHTER IS ALWAYS THE BEST MEDICINE.

Incident Human Resource Specialists: Marilyn Loughrey

Location: HRSP Office, ICP



NOT TO SCALE

≠ Restrooms

UNIT LOG	1. Incident Name	2. Date Prepared	3. Time Prepared
	4. Unit Name/Designators	5. Unit Leader (Name and Position)	6. Operational Period
7. Personnel Roster Assigned			
	Name	ICS Position	Home Base
9. Prepared by (Name and Position)			