

KING INCIDENT

Incident Action Plan

CA-ENF-023461

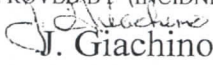
P5JEE9 (0503)

DAY SHIFT

9/19/14

Operational Period 0600 - 1800



INCIDENT OBJECTIVES	1. INCIDENT NAME	2. DATE PREPARED	3. TIME PREPARED
	KING	9/18/14	2200
4. OPERATIONAL PERIOD (DATE/TIME) DAY SHIFT 9/19/14 0600-1800			
5. GENERAL CONTROL OBJECTIVES FOR THE INCIDENT Management Objectives: Provide for safety of responders and the public Ensure an appropriate evacuation and repopulation plan is in place and communicated Establish and maintain positive relationships with cooperating agencies and the public Provide timely and accurate incident information Protect economic and watershed values with safe and aggressive firefighting efforts Keep costs commensurate with values at risk Control Objectives: Keep fire North of Forebay Road and Highway 50 east of Pollock Pines Keep fire East of Pino Grande Keep fire West of Ice House Road Keep fire South of the Middle Fork of the American River			
6. WEATHER FORECAST FOR OPERATIONAL PERIOD <p style="text-align: center;">See Attached</p>			
7. GENERAL/SAFETY MESSAGE <p style="text-align: center;">See Attached</p>			
8. ATTACHMENTS (X IF ATTACHED)			
<input checked="" type="checkbox"/> 202	<input checked="" type="checkbox"/> SAFETY MESSAGE / LCES	<input type="checkbox"/> TRANSPORTATION MAP	
<input checked="" type="checkbox"/> 203	<input checked="" type="checkbox"/> WEATHER	<input checked="" type="checkbox"/> INCIDENT MAP	
<input checked="" type="checkbox"/> 204	<input checked="" type="checkbox"/> AIR OPERATIONS SUMMARY	<input checked="" type="checkbox"/> FIRE BEHAVIOR	
<input checked="" type="checkbox"/> 205	<input checked="" type="checkbox"/> HUMAN RESOURCE	<input type="checkbox"/>	
<input checked="" type="checkbox"/> 206	<input checked="" type="checkbox"/> ICP / CAMP MAP	<input type="checkbox"/>	
<input checked="" type="checkbox"/> 214	<input checked="" type="checkbox"/> FIRE WEATHER	<input type="checkbox"/>	
ICS 202	9. PREPARED BY (PLANNING SECTION CHIEF) Dennis Cooper / Jason Schillinger (t)	10. APPROVED BY (INCIDENT COMMANDER)  J. Giachino / J. Tyler M. Cathy / S. Millert (t)	

FIRE BEHAVIOR FORECAST

FORECAST NUMBER: 4	TYPE OF FIRE: Wildfire
FIRE NAME: King Incident CA-ENF-023461	OPERATIONAL PERIOD: 9/19/2014 (0600 -1800)
DATE ISSUED: 9/18/14	TIME ISSUED: 2100 hours
UNIT: ENF	SIGNED: Denny O'Neil (FBAN)

INPUTS

WEATHER SUMMARY-SEE ATTACHED FIRE WEATHER FORCAST

The upper low is south of the fire which brings easterly ridge winds over the area. Expect increased temperatures and decreased RH's. A battle between winds late morning to afternoon on the west flank of the fire as WNW upper slope/ridge winds will likely battle the predominantly easterly winds.

Temperatures 77-81 Up 6-8 from yesterday

Relative Humidity: 30-40 % Down 25%-352%

20 FT RIDGETOP WINDS: Battling winds from ENE with gusts 10-15 mph on the east side and WNW 3-6 on west side with westerly afternoon gusts to 10 MPH.

20 FT SLOPE/VALLEY WINDS: Down canyon 5-10 mph (strongest 0400-0700), shifting upslope/upcanyon 3-6 mph between 0900-1000, increasing to 5-8 mph with gusts 12 mph in aligned canyons.

FUELS –The primary carrier of fire is timber. The fire area has many areas with fuel treatments and timber operations, which have created open and closed canopies and understories of grass, regeneration and brush. There are also areas of brush and grass. *Live and dead fuels are at critically low levels!*

FIRE DANGER INDICES-Thresholds for Active Fire Behavior in the King Fire area (Eldorado NF PocketCard):
 * 20ft Winds (over 5 mph), *RH (under 22%), *Temperature (over 84°) and *1000hr FMC (under 9%).

OUTPUTS

FIRE BEHAVIOR SPECIFIC

CRITICAL BURN PERIOD = 0900 - 2000 hours

LIVE FUEL MOISTURE = Below Critical Threshold

RATE OF SPREAD= 20- 30 Chains/Hour

POTENTIAL FOR SPOTTING = Moderate-High

SPOTTING DISTANCE = 1/4-1/2 Mile

FLAME LENGTHS= 1-10 ft

Branch I- Daytime WSW winds will be favorable for holding completed fireline on the SW side of the branch. Monitor interior islands and unburned fuels adjacent to control lines. Unmitigated hot spots in these areas have the potential to create flare ups that can loft embers over control lines. ENE winds should begin in the evening. Expect erratic winds at the confluence of the American River and Slab Creek.

Branch III- Expect flanking fire behavior as the fire moves down into the Slab Creek Drainage under the daytime WSW winds. If the fire establishes in the drainage, there is the potential for upslope runs towards Slate Mountain and Mosquito Road. ENE winds should begin late in the evening.

Branch V - Expect flanking fire behavior as the fire moves down into Long Canyon during the day.

Branch VI- The fire will continue to burn to the N towards Chipmonk Ridge and NW towards Laddies Cove. Expect single and group tree torching.

Branch VII- Expect the fire to continue to burn to the NE from Silver Creek up Government Ridge toward Hunter Valley. WSW winds could create adverse conditions for holding firing operations. Monitor for spotting.

AIR OPERATIONS

Inversion should lift with improved visibility after 1000 hrs **Sunrise - 0648 hours** **Sunset 1905 hours**

SAFETY

- Dead and live fuels are at critical levels. Alignment of fuels with topography or wind can initiate a rapid change in fire behavior.
- When developing strategies and tactics, safety zones and escape routes you should be evaluating potential fire behavior (worst case scenario), not just observed fire behavior.

Division Assignment List	1. Branch I	2. Division/Group AA
---------------------------------	-----------------------	--------------------------------

3. Incident Name ENF KING	4. Operational Period 09/19/14 Friday Day Shift 0600 - 1800
-------------------------------------	---

5. Operations Personnel			
Operations Chief	KEITH GURROLA; STEVE BURNS (t)	Division/Group Supervisor	BRIAN NEWMAN
Operations Chief	CHARLIE BLANKENHIEM	Air Attack Supervisor	
Branch Director	M. HIGGINS; M. BLANKENHEIM (t)	Safety Officer	MARTIN HAMEL; STEVE RYBERG

6. Resources Assigned this Period					
Strike Team/Task Force/ Resource Designator	Leader	Num of Pers.	Trans. Y/N	Drop Off PT./Time	Pick Up PT./Time
CRW1 S/T 9474G C-77*	Robert Castillo	33	N	0600	0600
CRW1 S/T 9175G C-79*	Anthony Anderson	34	N	0600	0600
ENG S/T LNU 9140C E-176*	Jim Vierra	16	N	0600	0600
ENG S/T AEU 9270C E-182*	Mark Brunton	21	N	0600	0600
ENG S/T XSJ 4179C E-166*	Stan Sieffert	17	N	0600	0600
DOZ T2 S/T LNU 9145L E-193*	Doug Jones	5	N	0600	0600
WT ENF E-22*	Kimber Baker	2	N	0600	0600
WT T1 GOT WATER E-254*	Gary Reynolds	2	N	0600	0600
WT RODGERS AWD E-10*	Buddy Rodgers	2	N	0600	0600
WT RAYMOND REYES E-14	Raymond Reyes	1	N	0600	1800
WT T1 ANDERSON WATER E-262	Robert Anderson	1	N	0600	1800
WT T2 E64 GOLDEN ST E-257*		2	N	0600	0600
ELM E-166			N	0600	1800
SOFR O-700	Donald Foco Jr.	1	N	0600	1800

7. Control Operations
 Construct line to the Branch I/VII break.

8. Special Instructions
 Noxious weeds are marked by orange "noxious weed" flagging. Minimize or avoid activities in these areas.
 Sensitive areas are marked with pink/black checkerboard flagging. Minimize ground disturbing activities in these areas.
 Indicates a 24 hour resource 0600-0600

9. Division/Group Communications Summary							
Function	Frequency - RX	Frequency - TX	Tone	System	Channel	System	Channel
Command	167.1000	169.7500	146.2	NIFC C5	1		
actical Div/Group	168.0500	168.0500		NIFC T1	4		
ogistics							
ir to Ground	169.1500	169.1500		A/G CMD	13		
Prepared by (Resource Unit Leader) Wilson / J. Switzler / E. Matye (t)		Approved by (Planning Section Chief) Dennis Cooper / Jason Schillinger (t)		Date Prepared 09/18/14		Time Prepared 0812	

Division Assignment List		1. Branch I	2. Division/Group DD
---------------------------------	--	-----------------------	--------------------------------

3. Incident Name ENF KING	4. Operational Period 09/19/14 Friday Day Shift 0600 - 1800
-------------------------------------	---

5. **Operations Personnel**

Operations Chief	KEITH GURROLA; STEVE BURNS (t)	Division/Group Supervisor	SEAN NORMAN
Operations Chief	CHARLIE BLANKENHEIM	Air Attack Supervisor	
Branch Director	MARK HIGGINS; MICHAEL BLANKENHEIM (t)	Safety Officer	MARTIN HAMEL; STEVE RYBERG

6. **Resources Assigned this Period**

Strike Team/Task Force/ Resource Designator	Leader	Num of Pers.	Trans. Y/N	Drop Off PT./Time	Pick Up PT./Time
CRW T1 WYOMING IHC C-115	Matt Prentiss	20	N	0600	1800
CRW T2 NMZUA #1 C-98	Murray Hannaweeka	20	N	0600	1800
CRW1 S/T 9473G C-70*	Julio Quiroz	34	N	0600	0600
CRW1 S/T 9142G C-78*	Robin Bloom	35	N	0600	0600
CRW1 S/T 9127G C-80*	Eric Rudesill	30	N	0600	0600
ENG S/T MEU 9110C E-174*	Jeff Schlafer	17	N	0600	0600
ENG S/T XSA 4161C E-167*	Sean Stumbaugh	22	N	0600	0600
DOZ T2 AEU 2744 E-403*	Doug Granbois			0600	0600
DOZ T2 2741 E-192*	Mike Pinochi	2	N	0600	0600
DOZ T2 94N7 WYCOFF E-41*		2	N	0600	0600
DOZ T2 A & F E-44*		3	N	0600	0600
DOZ T2 MORRISON E-46*	John Morrison	2	N	0600	0600
DOZ T2 BORDGES N0151 E-98*	Tim Bordges	2	N	0600	0600
DOZ T2 PAT DENIS EQUIP E-216*	Pat Denis	3	N	0600	0600
DOZ T2 NORTHSTATE E-48	Landon Rosencrans	2	N	0600	1800
DOZ T2 GEORGE E-37	Ron Clark	1	N	0600	1800
WT T2 WILBURN CONST E-31	Don Nelson	1	N	0600	1800
FALM O-65		2	N	0600	1800
HEQB	Richard Noggles	1	N	0600	1800
FEMP O-498	Damien Criner	1	N	0600	1800

7. **Control Operations**

Construct direct and indirect line from the DD/BBCC break to the Branch I/III break.

8. **Special Instructions**

Identify resources to respond for initial attack.
 Noxious weeds are marked by orange "noxious weed" flagging. Minimize or avoid activities in these areas.
 Sensitive areas are marked with pink/black checkerboard flagging. Minimize ground disturbing activities in these areas.

* Indicates a 24 hour resource 0600-0600

9. **Division/Group Communications Summary**

Function	Frequency - RX	Frequency - TX	Tone	System	Channel	System	Channel
Command	167.1000	169.7500	146.2	NIFC C5	1		
Tactical Div/Group	166.7250	166.7250		NIFC T5	6		
Logistics							
Air to Ground	169.1500	169.1500		A/G CMD	13		

Prepared by (Resource Unit Leader) J. Wilson / J. Switzler / E. Matye (t)	Approved by (Planning Section Chief) Dennis Cooper / Jason Schillinger (t)	Date Prepared 09/18/14	Time Prepared 0812
---	--	----------------------------------	------------------------------

Division Assignment List		1. Branch III		2. Division/Group A			
3. Incident Name ENF KING		4. Operational Period 09/19/14 Friday Day Shift 0600 - 1800					
5. Operations Personnel							
Operations Chief	KEITH GURROLA; STEVE BURNS (t)		Division/Group	CHRIS WATERS			
Operations Chief	CHARLIE BLANKENHIEM		Air Attack Supervisor				
Branch Director	DON FORSYTH		Safety Officer	MARTIN HAMEL; STEVE RYBERG			
6. Resources Assigned this Period							
Strike Team/Task Force/ Resource Designator	Leader	Num of Pers.	Trans. Y/N	Drop Off PT./Time	Pick Up PT./Time		
CRW T1 RUBY MTN IHC C-102	Craig Cunningham	18	N	Quintette 0800	1800		
CRW T1 MODOC IHC C-95	Willie Armand	20	N	Quintette 0800	1800		
CRW1 S/T 9143G C-75*	John Layton	33	N	Quintette 0800	0600		
CRW1 S/T 9256G C-82*	Benjamin Sitter	34	N	Quintette 0800	0600		
CRW S/T G				Quintette 0800	0600		
CRW S/T G				Quintette 0800	0600		
CRW S/T G				Quintette 0800	0600		
CRW S/T G				Quintette 0800	0600		
CRW S/T G				Quintette 0800	0600		
ENG S/T 6440C E-91	Brad Rushing	18	N	Quintette 0800	1800		
ENG S/T 2812A E-97	John Healy	22	N	Quintette 0800	0600		
ENG S/T NEU 9230C E-59*	Darin Nelson	17	N	Quintette 0800	0600		
ENG S/T XSO 2350C E-160*	Bob Stoffel	21	N	Quintette 0800	0600		
ENG S/T XSD 6418C E-304*	Randy Meers	22	N	Quintette 0800	0600		
ENG S/T 6220C E-305*	Thomas Hannemann	20	N	Quintette 0800	1800		
DOZ T2 2142 E-199*	Corey Wolter	3	N	Quintette 0800	0600		
DOZ T2 2544 E-200*	Cliff Wilbanks	2	N	Quintette 0800	0600		
DOZ T2 2444 E-201*	Clay Norman	2	N	Quintette 0800	0600		
WT T1 ECF 17 E-273*	Greg Morford	2	N	Quintette 0800	0600		
WT ENF E-8*	Doug Hill	2	N	Quintette 0800	0600		
7. Control Operations							
Construct line and provide for structure defense adjacent to the communities at risk from the Branch I/III break to the Division A/D break.							
8. Special Instructions							
Identify resources to respond for initial attack.							
Noxious weeds are marked by orange "noxious weed" flagging. Minimize or avoid activities in these areas.							
Sensitive areas are marked with pink/black checkerboard flagging. Minimize ground disturbing activities in these areas.							
* Indicates a 24 hour resource 0600-0600							
9. Division/Group Communications Summary							
Function	Frequency - RX	Frequency - TX	Tone	System	Channel	System	Channel
Command	167.1000	169.7500	146.2	NIFC C5	1		
Tactical	166.7750	166.7750		NIFC T6	7		
Logistics							
Air to Ground	169.1500	169.1500		A/G CMD	13		
Prepared by (Resource Unit Leader) J. Wilson / J. Switzler / E. Matye (t)		Approved by (Planning Section Chief) Dennis Cooper / Jason Schillinger (t)		Date Prepared 09/18/14		Time Prepared 2358	

Division Assignment List		1. Branch III		2. Division/Group D			
3. Incident Name ENF KING		4. Operational Period 09/19/14 Friday Day Shift 0600 - 1800					
5. Operations Personnel							
Operations Chief		KEITH GURROLA; STEVE BURNS (t)		Division/Group Supervisor			
Operations Chief		CHARLIE BLANKENHEIM		JOSEPH FORDING			
Branch Director		DON FORSYTH		Air Attack Supervisor			
				Safety Officer			
				MARTIN HAMEL; STEVE RYBERG			
6. Resources Assigned this Period							
Strike Team/Task Force/ Resource Designator		Leader	Num of Pers.	Trans. Y/N	Drop Off PT./Time	Pick Up PT./Time	
CRW T1 KLAMATH IHC C-91		Johnny Clem	18	N	Quintette 0800	1800	
CRW T1 ELDORADO IHC C-85		William Harris	20	N	Quintette 0800	1800	
CRW T2IA FIRESTORM WFS C-24 9/28		Andaverde Rodolfo	20	N	Quintette 0800	1800	
CRW T2IA GFP ENT C-25 9/28		Jason Campbell	20	N	Quintette 0800	1800	
ENG S/T MRN 9150C E-178 9/29*		Jeremy Pierce	19	N	Quintette 0800	0600	
ENG S/T XYU 3300C E-190 9/28*		Rich Webb	17	N	Quintette 0800	0600	
ENG T6 PAULA HOLTER E-333 9/30		Paula Holth	3	N	Quintette 0800	1800	
ENG T6 PAULA HOLTER E-334 9/30		Chuck Newberry	3	N	Quintette 0800	1800	
ENG T6 PAULA HOLTER E-335 9/30		Don Helter	3	N	Quintette 0800	1800	
WT T3 LET UR BUCK E-19 9/28*		Billie Rocha	2	N	Quintette 0800	0600	
WT T1 ALLEN'S E-132 9/30*		John Allen	2	N	Quintette 0800	0600	
WT T2 WATERWAGONS E-256*		Randy Auker	2	N	Quintette 0800	0600	
WT T1 T&S DVBE INC E-274*		Paul Swartz	2	N	Quintette 0800	0600	
WT T1 T&S DVBE E-275*		Bob Forde	2	N	Quintette 0800	0600	
WT T2 LAYTON CITY E-129 9/30		Cyle Hall	2	N	Quintette 0800	1800	
WT T2 WATERBOYS E-1		Robert Keene	1	N	Quintette 0800	1800	
WT T3 E-18		Hoyt Baker	1	N	Quintette 0800	1800	
DOZ T2 3 E-113 10/1		Rodney Carlton	2	N	Quintette 0800	1800	
DOZ T2 MDF 4 E-114 9/28		Perry St. John	2	N	Quintette 0800	1800	
DOZ T2 E-194		Daniel Langenderfer	2	N	Quintette 0800	1800	
7. Control Operations							
Construct line/structure defense adjacent to communities at risk from the Division D/A break to the Division D/G break.							
8. Special Instructions							
Identify resources to respond for initial attack.							
Noxious weeds are marked by orange "noxious weed" flagging. Minimize or avoid activities in these areas.							
Sensitive areas are marked with pink/black checkerboard flagging. Minimize ground disturbing activities in these areas.							
* Indicates a 24 hour resource.							
9. Division/Group Communications Summary							
Function	Frequency - RX	Frequency - TX	Tone	System	Channel	System	Channel
Command	167.1000	169.7500	146.2	NIFC C5	1		
Operational Div/Group	168.2500	168.2500		NIFC T7	8		
Logistics							
Air to Ground	169.1500	169.1500		A/G CMD	13		
Prepared by (Resource Unit Leader)		Approved by (Planning Section Chief)		Date Prepared		Time Prepared	
Gary Thompson		Dennis Cooper / Jason Schillinger (t)		09/18/14		2300	

Division Assignment List		1. Branch III	2. Division/Group G			
3. Incident Name ENF KING		4. Operational Period 09/19/14 Friday Day Shift 0600 - 1800				
5. Operations Personnel						
Operations Chief	KEITH GURROLA; STEVE BURNS (t)		Division/Group	KIM OLSON/DAVID BUCHANAN		
Operations Chief	CHARLIE BLANKENHEIM		Air Attack Supervisor			
Branch Director	DON FORSYTHE		Safety Officer	MARTIN HAMEL; STEVE RYBERG		
6. Resources Assigned this Period						
Strike Team/Task Force/ Resource Designator	Leader	Num of Pers.	Trans. Y/N	Drop Off PT./Time	Pick Up PT./Time	
CRW T1 TRINITY IHC C-7	Robert Reeves	21	N	Quintette 0800	1800	
ENG S/T 4104C E-163*	Jim Bierwagon	18	N	Quintette 0800	0600	
ENG S/T 4133C E-164*	Patrick Nelson	19	N	Quintette 0800	0600	
DOZ T2 ALGERINE WEST E-211*	Monte West	2	N	Quintette 0800	0600	
DOZ T2 JW MORRISON E-217*	Matthew Morrison	2	N	Quintette 0800	0600	
DOZ T2 LENAHN'S WATER E-212*	John Montz	2	N	Quintette 0800	0600	
DOZ T2 PRO DUMP & EX E-205*	Ed Smith	2	N	Quintette 0800	0600	
DOZ T2 YTS E-197*	Richard Jaugch	2	N	Quintette 0800	0600	
DOZ T2 KRAMER E-35*	Kurt Kramer	2	N	Quintette 0800	0600	
DOZ T2 1540 E-148*	Michael Waters	2	N	Quintette 0800	0600	
DOZ T2 AAA EQUIP E-207*	Brendon Simunaci	2	N	Quintette 0800	0600	
DOZ T2 TEHAMA TRANS E-208*	Toby Adams	2	N	Quintette 0800	0600	
DOZ T2 BEN'S TRUCK & EQU E-100	Greg McCart	2	N	Quintette 0800	1800	
DOZ T2 BEN'S TRUCK & EQU E-103	John Bradely	4	N	Quintette 0800	1800	
MEYER, GORDON O-256 9/28	Gordon Meyer	1	N	Quintette 0800	1800	
WARLICK, TERRY O-262 9/30	Terry Warlick	1	N	Quintette 0800	1800	
SOFR O-141	Rick Clarke	1	N	Quintette 0800	1800	
SOFR O-142	Mani Bouslaugh (t)	1	N	Quintette 0800	1800	
SOF2 O-148	Louis Sclocchetti	1	N	Quintette 0800	1800	

7. Control Operations

Construct line from the Division D/G break to the Division G/H break.

3. Special Instructions

Identify resources to respond for initial attack.

Noxious weeds are marked by orange "noxious weed" flagging. Minimize or avoid activities in these areas.

Sensitive areas are marked with pink/black checkerboard flagging. Minimize ground disturbing activities in these areas.

* Indicates a 24 hour resource 0600-0600

9. Division/Group Communications Summary							
Function	Frequency - RX	Frequency - TX	Tone	System	Channel	System	Channel
Command	167.1000	169.7500	146.2	NIFC C5	1		
Tactical	166.5500	166.5500		R5 T4	9		
Logistics							
Air to Ground	169.1500	169.1500		A/G CMD	13		

Prepared by (Resource Unit Leader) L. Wilson / J. Switzler / E. Matye (t)		Approved by (Planning Section Chief) Dennis Cooper / Jason Schillinger (t)		Date Prepared 09/18/14	Time Prepared 0812
--	--	---	--	---------------------------	-----------------------

Division Assignment List	1. Branch V	2. Division/Group J
---------------------------------	-----------------------	-------------------------------

3. Incident Name ENF KING	4. Operational Period 09/19/14 Friday Day Shift 0600 - 1800
------------------------------	--

5. Operations Personnel

Operations Chief	KEITH GURROLA; STEVE BURNS (t)	Division/Group Supervisor	JAMES SNOW; RON GREGOR(t)
Operations Chief	CHARLIE BLANKENHEIM	Air Attack Supervisor	
Branch Director	DANA DANDREA	Safety Officer	MARTIN HAMEL; STEVE RYBERG

6. Resources Assigned this Period

Strike Team/Task Force/ Resource Designator	Leader	Num of Pers.	Trans. Y/N	Drop Off PT./Time	Pick Up PT./Time
ENG S/T HUU 9121C E-175*	Pat Barrington	19	N	0600	0600
ENG S/T LNU 9148C E-177*	Jon Robbins	19	N	0600	0600

7. Control Operations

Scout potential line locations for direct and indirect lines.

8. Special Instructions

Identify resources to respond for initial attack.
Noxious weeds are marked by orange "noxious weed" flagging. Minimize or avoid activities in these areas.
Sensitive areas are marked with pink/black checkerboard flagging. Minimize ground disturbing activities in these areas.
* Indicates a 24 hour resource 0600-0600

9. Division/Group Communications Summary

Function	Frequency - RX	Frequency - TX	Tone	System	Channel	System	Channel
Command	167.1000	169.7500	146.2	NIFC C5	1		
Tactical Div/Group	168.0500	168.0500		NIFC T1	4		
Logistics							
Air to Ground	169.1500	169.1500		A/G CMD	13		

Prepared by (Resource Unit Leader) J. Wilson / J. Switzler / E. Matye (t)	Approved by (Planning Section Chief) Dennis Cooper / Jason Schillinger (t)	Date Prepared 09/18/14	Time Prepared 0812
--	---	---------------------------	-----------------------

Division Assignment List		1. Branch V	2. Division/Group P
3. Incident Name ENF KING		4. Operational Period 09/19/14 Friday Day Shift 0600 - 1800	

5. Operations Personnel

Operations Chief	KEITH GURROLA; STEVE BURNS (t)	Division/Group Supervisor	ERIC STAHLIN; PATRICK MEDINA(t)
Operations Chief	CHARLIE BLANKENHEIM	Division/Group Supervisor	P WALKER; R REDINGER; R BLAIR (t)
Branch Director	DANA DANDREA	Safety Officer	MARTIN HAMEL; STEVE RYBERG

6. Resources Assigned this Period

Strike Team/Task Force/ Resource Designator	Leader	Num of Pers.	Trans. Y/N	Drop Off PT./Time	Pick Up PT./Time
CRW T1 TRUCKEE IHC C-145	Bobby Hubby	20	N	0600	1800
CRW T1 PALOMAR IHC C-146	Jose Ortega	20	N	0600	1800
CRW T1 PAYSON IHC C-147	Michael Shinstock	20	N	0600	1800
CRW T2 GH RANCH 13099 C-42	Leonard Townsend	20	N	0600	1800
DOZ T2 TOM'S EARTH MOVIN E-101*	John Thornton	4	N	0600	0600
WT T1 TACTICAL E-141		2	N	0600	1800
WT T2 TMU 4 E-255	Spencer Griscom	2	N	0600	1800
READ O-332	Blake Engelhardt	1	N	0600	1800
ARCH O-329	Dorit Buckley	1	N	0600	1800

7. Control Operations

Scout potential line locations for direct and indirect lines.

8. Special Instructions

Identify resources to respond for initial attack.

Noxious weeds are marked by orange "noxious weed" flagging. Minimize or avoid activities in these areas.

Sensitive areas are marked with pink/black checkerboard flagging. Minimize ground disturbing activities in these areas.

Indicates a 24 hour resource 0600-0600

9. Division/Group Communications Summary

Function	Frequency - RX	Frequency - TX	Tone	System	Channel	System	Channel
Command	167.1000	169.7500	146.2	NIFC C5	1		
actical Div/Group	168.2500	168.2500		NIFC T7	8		
ogistics							
ir to Ground	169.1500	169.1500		A/G CMD	13		

Prepared by (Resource Unit Leader) Wilson / J. Switzler / E. Matye (t)	Approved by (Planning Section Chief) Dennis Cooper / Jason Schillinger (t)	Date Prepared 09/18/14	Time Prepared 2300
--	--	----------------------------------	------------------------------

Division Assignment List	1. Branch VII	2. Division/Group S
3. Incident Name ENF KING	4. Operational Period 09/19/14 Friday Day Shift 0600 - 1800	

5. Operations Personnel			
Operations Chief	KEITH GURROLA; STEVE BURNS (t)	Division/Group Supervisor	MICHAEL CHERRY; D. SOLDAVINI (t)
Operations Chief	CHARLIE BLANKENHEIM	Air Attack Supervisor	
Branch Director	KELLY MARTIN; SEAN JOHNSON	Safety Officer	MARTIN HAMEL; STEVE RYBERG

6. Resources Assigned this Period					
Strike Team/Task Force/ Resource Designator	Leader	Num of Pers.	Trans. Y/N	Drop Off PT./Time	Pick Up PT./Time
CRW T2IA HIG HIG C-9	Jd Ottman	20	N	0600	1800
CRW T2 GH RANCH C-41	Allen Bacon	20	N	0600	1800
CRW T2IA AOICC INTER C-10	Tim Deaton	20	N	0600	1800
CRW T2IA R10 #5 C-22	Robert Berney	19	N	0600	1800
CRW T2IA ALAMO REGULARS C-14		21	N	0600	1800
CRW T2IA PACIFIC OASIS C-26	Ken Wilson	16	N	0600	0600
CRW T2IA NWS C-96	Andrew Siebach	18	N	0600	1800
ENG S/T 3025C E-189*	Jeff Gilbert	17	N	0600	0600
ENG S/T 4228C E-168*	Brad Zlendick	19	N	0600	0600
JOZ T2 (CA-PNF) E-144	Scott Sibbald	3	N	0600	1800
JOZ T2 (CA-PNF) E-145		2	N	0600	1800
JOZ T2 CASHF 29 E-146*	Dave Brown	2	N	0600	0600
JOZ T2 DOUG HENDON 3WN E-121		2	N	0600	1800
JOZ T2 TOUGH COMPANY INC E-106*	Hayes Cedar	4	N	0600	0600
JOZ T2 DIAMOND RING E-102*	John Britten	2	N	0600	0600
JOZ T2 BIG EDS CRANE E-210*	Rick Roger	3	N	0600	0600
JOZ T2 NORTHSTATE E-110*	Gifford Tallmadge	2	N	0600	0600
JOZ T2 NORTHSTATE E-122*	Mike Brask	3	N	0600	0600
JOZ T2 AMADOR E-196*	Mervin Vicini	2	N	0600	0600
JOZ T2 SHF 79 E-112	Jason Shurrah	3	N	0600	1800

7. Control Operations

Scout potential line locations for direct and indirect lines.

8. Special Instructions

Noxious weeds are marked by orange "noxious weed" flagging. Minimize or avoid activities in these areas.

Sensitive areas are marked with pink/black checkerboard flagging. Minimize ground disturbing activities in these areas.

Indicates a 24 hour resource 0600-0600

9. Division/Group Communications Summary							
Function	Frequency - RX	Frequency - TX	Tone	System	Channel	System	Channel
Command	167.1000	169.7500	146.2	NIFC C5	1		
Operational Div/Group	168.2375	168.2375		R5 T6	11		
Logistics							
Air to Ground	169.1500	169.1500		A/G CMD	13		

Prepared by (Resource Unit Leader) Ken Wilson / J. Switzler / E. Matye (t)	Approved by (Planning Section Chief) Dennis Cooper / Jason Schillinger (t)	Date Prepared 09/18/14	Time Prepared 0811
---	---	---------------------------	-----------------------

Division Assignment List	1. Branch VII	2. Division/Group T
---------------------------------	-------------------------	-------------------------------

3. Incident Name ENF KING	4. Operational Period 09/19/14 Friday Day Shift 0600 - 1800
-------------------------------------	---

5. **Operations Personnel**

Operations Chief	KEITH GURROLA; STEVE BURNS (t)	Division/Group Supervisor	MICHAEL SWEANY
Operations Chief	CHARLIE BLANKENHEIM	Air Attack Supervisor	
Branch Director	KELLY MARTIN / SEAN JOHNSON	Safety Officer	MARTIN HAMEL; STEVE RYBERG

6. **Resources Assigned this Period**

Strike Team/Task Force/ Resource Designator	Leader	Num of Pers.	Trans. Y/N	Drop Off PT./Time	Pick Up PT./Time
CRW T1 SAWTOOTH IHC C-89	Michael Krupski	20	N	Crystal Ranger sta 0800	1800
CRW T2IA ASP FIRE C-23	Mike Denning	20	N	Crystal Ranger sta 0800	1800
CRW T2IA HEART LAKE C-97	Charles Lubchenko	18	N	Crystal Ranger sta 0800	1800
CRW UWF NORTHERN UTAH C-30	Josh Haen	20	N	Crystal Ranger sta 0800	1800
WT T1 WALTERS E-276*	Simon Prekowitz	2	N	Crystal Ranger sta 0800	0600
WT T1 PRO DUMP E-277*	Mike Willilams	2	N	Crystal Ranger sta 0800	0600
SOFR O-318	Randy Engler	1	N	Crystal Ranger sta 0800	1800
SOFR O-321	Brian Hagen (t)	1	N	Crystal Ranger sta 0800	1800
READ O-333	Nick Jarvis	1	N	Crystal Ranger sta 0800	1800
ARCH O-465	Amber Lutsko	1	N	Crystal Ranger sta 0800	1800
ARCH O-466	Jesse Krautkramer	1	N	Crystal Ranger sta 0800	1800
EMP O-108	David Pruitt	1	N	Crystal Ranger sta 0800	1800
EMT O-113	Tim Moyles	1	N	Crystal Ranger sta 0800	1800

7. **Control Operations**

Scout potential line locations for direct and indirect lines.

8. **Special Instructions**

Identify resources to respond for initial attack.
 Noxious weeds are marked by orange "noxious weed" flagging. Minimize or avoid activities in these areas.
 Sensitive areas are marked with pink/black checkerboard flagging. Minimize ground disturbing activities in these areas.
 Indicates a 24 hour resource 0600-0600

9. **Division/Group Communications Summary**

Function	Frequency - RX	Frequency - TX	Tone	System	Channel	System	Channel
Command	167.1000	169.7500	146.2	NIFC C5	1		
actical Div/Group	166.5500	166.5500		R5 T4	9		
ogistics							
ir to Ground	169.1500	169.1500		A/G CMD	13		

Prepared by (Resource Unit Leader) Wilson / J. Switzler / E. Matye (t)	Approved by (Planning Section Chief) Dennis Cooper / Jason Schillinger (t)	Date Prepared 09/18/14	Time Prepared 0811
---	---	---------------------------	-----------------------

Division Assignment List

1. Branch	VII	2. Division/Group	W
3. Incident Name	4. Operational Period		
ENF KING	09/19/14 Friday Day Shift 0600 - 1800		
5. Operations Personnel			
Operations Chief	KEITH GURROLA; STEVE BURNS (t)	Division/Group Supervisor	THOMAS BROWNING
Operations Chief	CHARLIE BLANKENHEIM	Air Attack Supervisor	
Branch Director	KELLY MARTIN / SEAN JOHNSON	Safety Officer	MARTIN HAMEL; STEVE RYBERG

6. Resources Assigned this Period					
Strike Team/Task Force/ Resource Designator	Leader	Num of Pers.	Trans. Y/N	Drop Off PT./Time	Pick Up PT./Time
CRW T1 CEDAR CITY IHC C-8	Brian Burbridge	19	N	Crystal Ranger Sta 0800	1800
CRW T2IA NMCIF ACOMA #1 C-131	Andrew Henry	20	N	Crystal Ranger Sta 0800	1800
CRW T2IA RED ROCK C-39	Brandon Johnson	19	N	Crystal Ranger Sta 0800	1800
CRW T2 MQ FRANCO 13135 C-43	Andrew Henry	20	N	Crystal Ranger Sta 0800	1800
DOZ T2 HERTZIG E-206*	John Hertzig	1	N	Crystal Ranger Sta 0800	0600
DOZ T2 HERTZIG E-213*	Zack Gutzman	1	N	Crystal Ranger Sta 0800	0600
DOZ T2 SILLER BROTHERS E-45*	Ron Dow	2	N	Crystal Ranger Sta 0800	0600
DOZ T2 FIRELINE E-214*	Clint Larue	2	N	Crystal Ranger Sta 0800	0600
DOZ T2 ATLAS EQUIP 9 E-99*		3	N	Crystal Ranger Sta 0800	0600
DOZ T2 PAT BROWNING LOG E-40*	Pat Browning	2	N	Crystal Ranger Sta 0800	0600
DOZ T2 NORTHSTATE B41 E-47	Eric Spratt	2	N	Crystal Ranger Sta 0800	1800
DOZ T2 HERTZIG E-202	Dale Briski	1	N	Crystal Ranger Sta 0800	1800
WT T1 RIVER OAK E-260*	Paul Raine	2	N	Crystal Ranger Sta 0800	0600
WT T1 FLOODGATE H2O E-268*	Jessie Slotte	2	N	Crystal Ranger Sta 0800	0600
WT T1 RIVEROAK E-261*	Jeremy Fischer	2	N	Crystal Ranger Sta 0800	0600
WT T3 E-9	Roger Borba	1	N	Crystal Ranger Sta 0800	1800
WT T1 GLAKELER E-267*	Mike Wilds	2	N	Crystal Ranger Sta 0800	0600
WT T3 SIERRA WATER E-16*	Brandon Hatler	2	N	Crystal Ranger Sta 0800	0600
WT T3 E-15*	John Hertzig	1	N	Crystal Ranger Sta 0800	0600
WT T1 EL DORADO SUP E-5		1	N	Crystal Ranger Sta 0800	1800

7. Control Operations

Construct indirect and direct lines from the Division U/W break to the Division W/Y break.

8. Special Instructions

Noxious weeds are marked by orange "noxious weed" flagging. Minimize or avoid activities in these areas.

Sensitive areas are marked with pink/black checkerboard flagging. Minimize ground disturbing activities in these areas.

Indicates a 24 hour resource 0600-0600

9. Division/Group Communications Summary							
Function	Frequency - RX	Frequency - TX	Tone	System	Channel	System	Channel
Command	167.1000	169.7500	146.2	NIFC C5	1		
actical Div/Group	166.7750	166.7750		NIFC T6	7		
ogistics							
ir to Ground	169.1500	169.1500		A/G CMD	13		
Prepared by (Resource Unit Leader)			Approved by (Planning Section Chief)		Date Prepared	Time Prepared	
Wilson / J. Switzler / E. Matye (t)			Dennis Cooper / Jason Schillinger (t)		09/18/14	0811	

Division Assignment List	1. Branch VII	2. Division/Group Y
3. Incident Name ENF KING	4. Operational Period 09/19/14 Friday Day Shift 0600 - 1800	

5. Operations Personnel			
Operations Chief	KEITH GURROLA; STEVE BURNS (t)	Division/Group Supervisor	BRETT LOOMIS
Operations Chief	CHARLIE BLANKENHEIM	Air Attack Supervisor	
Branch Director	KELLY MARTIN; SEAN JOHNSON	Safety Officer	MARTIN HAMEL; STEVE RYBERG

6. Resources Assigned this Period					
Strike Team/Task Force/ Resource Designator	Leader	Num of Pers.	Trans. Y/N	Drop Off PT./Time	Pick Up PT./Time
CRW T2 FRANCO 136 C-44	Fernando Cervantes	20	N	Crystal Ranger Station	0600
CRW T2IA BECKWOURTH C-47	Damian Rivadeneyra	21	N	Crystal Ranger Station	0600
CRW T2IA FOLSOM LAKE C-137	Matt Lynde	19	N	Crystal Ranger Station	0600
CRW T2IA NMZUA #2 C-99	Chad Nastacio	20	N	Crystal Ranger Station	0600
DOZ T2 BIG EDS CRANE E-210*	Rick Rodger	3	N	Crystal Ranger Station	0600
DOZ T2 DIAMOND RING E-102*	John Britton	2	N	Crystal Ranger Station	0600
DOZ T2 TOUGH COMPANY E-106*	Cedar Hayes	4	N	Crystal Ranger Station	0600
DOZ T2 AMADOR E-196*	Mervin Mancini	2	N	Crystal Ranger Station	0600
WT T1 PRO DUMP E-277*	Mike Williams	2	N	Crystal Ranger Station	0600
WT T1 WALTERS E-276*	Simon Prekowitz	2	N	Crystal Ranger Station	0600
DIVS	James White	1	N	Crystal Ranger Station	0600
HEQB	Logan Lawson	1	N	Crystal Ranger Station	0600
HEQB	Curtis Herren (t)	1	N	Crystal Ranger Station	0600
HEQB	Charles Rich	1	N	Crystal Ranger Station	0600
SOFR O-318	Randy Engler	1	N	Crystal Ranger Station	0600
SOFR O-321	Brian Hagen (t)	1	N	Crystal Ranger Station	0600
FEMP O-108	Matt Cobb	1	N	Crystal Ranger Station	0600
FEMT O-435	Ben Sebok	1	N	Crystal Ranger Station	0600

7. Control Operations

Construct indirect and direct lines from the Division W/Y break to the Branch VIII/I break.

8. Special Instructions

Identify resources to respond for initial attack.

Noxious weeds are marked by orange "noxious weed" flagging. Minimize or avoid activities in these areas.

Sensitive areas are marked with pink/black checkerboard flagging. Minimize ground disturbing activities in these areas.

* Indicates a 24 hour resource 0600-0600

9. Division/Group Communications Summary							
Function	Frequency - RX	Frequency - TX	Tone	System	Channel	System	Channel
Command	167.1000	169.7500	146.2	NIFC C5	1		
Tactical Div/Group	167.1125	167.1125		R5 T5	10		
Logistics							
Air to Ground	169.1500	169.1500		A/G CMD	13		

Prepared by (Resource Unit Leader) L. Wilson / J. Switzler / E. Matye (t)	Approved by (Planning Section Chief) Dennis Cooper / Jason Schillinger (t)	Date Prepared 09/18/14	Time Prepared 0811
--	---	---------------------------	-----------------------

Division Assignment List	1. Branch	2. Division/Group WEST STRUCTURE
3. Incident Name ENF KING	4. Operational Period 09/19/14 Friday Day Shift 0600 - 1800	

5. Operations Personnel			
Operations Chief	KEITH GURROLA; STEVE BURNS (t)	Division/Group Supervisor	
Operations Chief	CHARLIE BLANKENHEIM	Air Attack Supervisor	
Branch Director		Safety Officer	MARTIN HAMEL; STEVE RYBERG

6. Resources Assigned this Period					
Strike Team/Task Force/ Resource Designator	Leader	Num of Pers.	Trans. Y/N	Drop Off PT./Time	Pick Up PT./Time
CRW T2IA ALAMO REGULARS C-14	Darrell Eaves	21	N	0600	1800
ENG S/T T1 6820A E-388*	Mike Pelletier	22	N	0600	0600
ENG S/T OES 1001A E-389 *	David Frelinger	23	N	0600	0600
ENG S/T 6840A E-387*	Charles Tockstein	22	N	0600	0600
ENG S/T T1 1800A E-392*	Barry Spriggs	22	N	0600	0600
ENG S/T OES 2811A E-96*	Herb Shoemaker	22	N	0600	0600
ENG T6 TAHOE SAGE FIRE E-358	Kevin Studley	3	N	0600	1800
ENG T6 FAIRVIEW VALLEY E-337	Dan Morgan	3	N	0600	1800
ENG T6 HIGH SIERRA E-338	Jerry Vice	3	N	0600	1800
ENG T6 HIGH SIERRA E-340	Jacob Rowsey	3	N	0600	1800
ENG T6 333 BLY MT FIRE SUP E-355	Mark Groves	3	N	0600	1800
ENG T6 FIRESTORM E-336	Joshua Bradley	3	N	0600	1800
ENG T6 FIRESTORM E-341	Ken Newitt	3	N	0600	1800
ENG T6 FIRESTORM E-339	Ron Sartain	3	N	0600	1800
ENG T6 PACIFIC OASIS E-342	Kent Smith	3	N	0600	1800
ENG T6 SPKX 21 E-356	Bill Macaulay	3	N	0600	1800
ENG T6 PACIFIC OASIS E-343	Steven Miller	3	N	0600	1800
ENG T6 002 GH RANCH, E-354	Geoffry Davis	3	N	0600	1800
ENG T6 ID SWS SE625 E-344	Colton McCarthy	3	N	0600	1800
TEN	Zachary Cogle	1	N	0600	1800

Control Operations
 Respond as directed by structure operations throughout the west area of the incident.

Special Instructions
 Identify resources to respond for initial attack.
 Noxious weeds are marked by orange "noxious weed" flagging. Minimize or avoid activities in these areas.
 Sensitive areas are marked with pink/black checkerboard flagging. Minimize ground disturbing activities in these areas.
 Indicates a 24 hour resource 0600-0600

Division/Group Communications Summary							
Function	Frequency - RX	Frequency - TX	Tone	System	Channel	System	Channel
Command	167.1000	169.7500	146.2	NIFC C5	1		
Operational Div/Group	154.3025	154.3025	156.7	VFIRE 26	12		
Logistics							
Radio to Ground	169.1500	169.1500		A/G CMD	13		

Prepared by (Resource Unit Leader) Wilson / J. Switzler / E. Matye (t)	Approved by (Planning Section Chief) Dennis Cooper / Jason Schillinger (t)	Date Prepared 09/18/14	Time Prepared 0811
---	---	---------------------------	-----------------------

Division Assignment List

1. Branch _____ 2. Division/Group **Mosquito Firing**

3. Incident Name **ENF KING** 4. Operational Period **09/19/14 Friday Day Shift 0600 - 1800**

5. **Operations Personnel**

Operations Chief	KEITH GURROLA; STEVE BURNS (T)	Division/Group Supervisor	Barry Beirmann / Steven Oaks (t)
Operations Chief	CHARLIE BLANKENHEIM	Air Attack Supervisor	
Branch Director		Safety Officer	MARTY HAMEL; STEVE RYBERG

6. **Resources Assigned this Period**

Strike Team/Task Force/ Resource Designator	Leader	Num of Pers.	Trans. Y/N	Drop Off PT./Time	Pick Up PT./Time
ENG S/T TCU 9440C ES3 E-185 9/29	Jacob Read	19	N	0600	1800
S/T G				0600	1800
S/T G				0600	1800
S/T G				0600	1800
S/T G				0600	1800
S/T G				0600	1800
S/T G				0600	1800

7. Control Operations

8. Special Instructions

Noxious weeds are marked by orange "noxious weed" flagging. Minimize or avoid activities in these areas. Sensitive areas are marked with pink/black checkerboard flagging. Minimize ground disturbing activities in these areas.

* Indicates a 24 hour resource 0600-0600

9. **Division/Group Communications Summary**

Function	Frequency - RX	Frequency - TX	Tone	System	Channel	System	Channel
Command	167.1000	169.7500	146.2	NIFC C5	1		
Tactical Div/Group							
Logistics							
Air to Ground	169.1500	169.1500		A/G CMD	13		

Prepared by (Resource Unit Leader) J. Wilson / J. Switzler / E. Matye (t)	Approved by (Planning Section Chief) Dennis Cooper / Jason Schillinger (t)	Date Prepared 09/19/14	Time Prepared 0107
--	---	---------------------------	-----------------------

AIR OPERATIONS SUMMARY

(Expanded Form for Large Operations)

START: 0700 END: 2000

OPERATIONAL PERIOD DATE: DAY SHIFT DATE: 09/19/2014

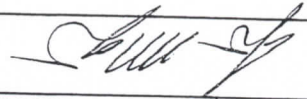
1. INCIDENT NAME: King	2. PREPARED BY: John Keesee <i>JK</i>	3. Prepared 09/18/14 1930 hrs
4. REMARKS (Safety Notes, Hazards, Air Operations Special Equipment, etc.): STEEP SMOKEY CONDITIONS, OTHER FIRES, OTHER AIRCRAFT SUNRISE: 0648 SUNSET: 1907 5. TFR: 4/7337 Altitude : 9000' Freq. 118.6250 See TFR map TRACK RETARDANT DROP LOCATIONS Incident aircraft will support initial attack within and adjacent to the TFR. FAA tower in place at Placerville airport. AOB with Lat & Long, est. of gallons, and a map. **Avoid aerial application of retardant or foam within 300' of waterways, bodies of water. If retardant is dropped within these areas, notify ALL GPS data to be collected (degrees, minutes & decimal minutes) AOBD with Lat & Long, est. of gallons, and a map.		

6. PERSONNEL		Phone	FREQUENCIES	AM	FM
AOBD: John Keesee	805-551-6422	AIR/AIR FW:	118.6250	166.6750	
ASGS: Craig Dado	530-518-6688	AIR/AIR RW:	135.7250		
ASGS: Todd Gilbreth	619-548-3729	A/G Command:	760-250-6230	169.1500	
HLCO: Lane Caldwell	530-310-2211	A/G Tactical:	530-206-6955	167.9500	
HLCO: John Chin	530-263-5621	DECK:	163.100		
ATGS: Jason Withrow	208-241-0399	COMMAND:	TX	RX	
ATGS: Todd White	928-245-2539	AIR GUARD:	168.625	Tone Tx 110.9	
HEBM: Travis Taylor (T)	530-272-4952	TOWER:	119.100		
HEBM: Don Clark	530-391-7514				
Grass Valley ATB					
McClellan ATB					

9. HELICOPTERS (Use Additional Sheets As Necessary)

FAA #	TY	MAKE/MODEL	BASE	AVAIL	START	REMARKS
301	3	BELL 206	PVF	0800	0700	Recon/Helco
54E	3	AS 350	PVF	0800	0700	Recon/Helco
67H	3	Bell 206	PVF	0800	0700	Recon/Helco
7AC	3	Bell 407	PVF	0800	0700	IR/Mapping
104	2	Bell 205	PVF	0800	0700	Bucket/Shuttle/Hoist
SDY	2	Bell 205	PVF	0800	0700	Bucket/Shuttle
7HX	2	Bell 205	PVF	0800	0700	Bucket/Shuttle
516	2	Bell 212HP	PVF	0800	0700	Bucket/Shuttle
212AH	2	Bell 212	PVF	0800	0700	Bucket/Shuttle
2TH	2	Bell 212	PVF	0800	0700	Bucket/Shuttle
301	2	Bell 210	PVF	0800	0700	REMARKS
		BASE	AVAIL	START		

Prepared By (Communications Unit)
 Tim Maguire, COML (t) (408) 679-2305



9/18/14 21:35

Incident Location: El Dorado
 Placerville, CA
 County: El Dorado
 Latitude, Longitude: 38°46.55' N, 120° 36.12' W

Ch #	Function	Channel Name/Trunked Radio System Talkgroup	Assignment	RX Freq	RX Tone/NAC	TX Freq	Tx Tone/NAC	Remarks
1	Command	NIFC C5	All Divisions	167.1000	146.2	169.7500	146.2	Linked to all Commands
2	Command	NIFC C12	All Divisions	173.0375	146.2	167.3250	146.2	Linked to all Commands
3	Command	NIFC C37	All Divisions	172.5500	146.2	162.1875	146.2	Linked to all Commands
4	Tactical	NIFC T1	DIV AA & J	168.0500		168.0500		
5	Tactical	NIFC T2	DIV BB / CC & Q	168.2000		168.2000		
6	Tactical	NIFC T5	DIV DD & U	166.7250		166.7250		
7	Tactical	NIFC T6	DIV A & W	166.7750		166.7750		
8	Tactical	NIFC T7	DIV D & P	168.2500		168.2500		
9	Tactical	R5 T4	DIV G & T	166.5500		166.5500		
10	Tactical	R5 T5	DIV M & Y	167.1125		167.1125		
11	Tactical	R5 T6	DIV S & H	168.2375		168.2375		
12	Tactical	VFIRE 26	Structure Grp	154.3025	156.7	154.3025	156.7	East, West & Hell Hole Structure Grps.
13	Tactical	A/G CMD	Air / Ground CMD	169.1500		169.1500		
14	Tactical	A/G TAC	Air / Ground TAC	167.9500		167.9500		A 1
15	Tactical	CALCORD	Medical	156.0750	156.7	156.0750	156.7	Medical Coordination
16	Emergency Only	Guard	Incident	168.6250		168.6250	110.9	Emergency only

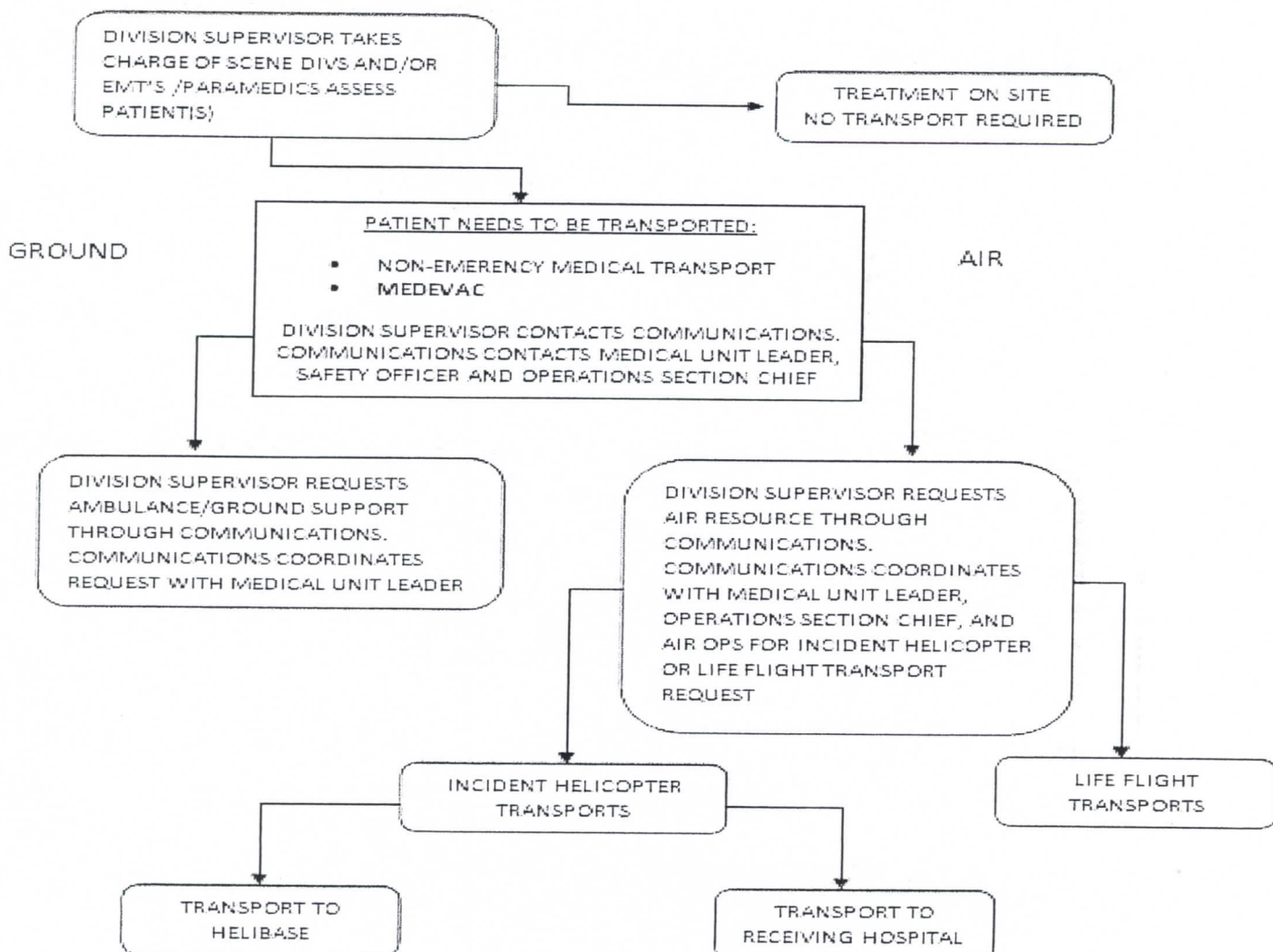
Incident Name	King Fire, CA-ENF-023461
Date/Time Prepared	9/18/2014, 2140 HRS
Operational Period Date/Time	DAY, 9/19/14

When an injury occurs, initiate care with available resources at scene and notify DIVS.

The DIVS shall coordinate the incident and direct necessary actions. The following steps shall be taken to mitigate the incident:

1. Determine the nature of the emergency.
2. If the emergency is a medical injury/illness, determine if the injury/illness is life threatening.
3. If the injury is life threatening, then clear designated frequency for emergency traffic.
4. Identify the on-scene point of contact by position.
5. Ensure that the Medical Unit Leader is contacted immediately.
6. Identify number injured, patient assessment(s) and location (geographic and/or GPS coordinates).
7. Identify on-scene medical personnel by position and last name (i.e. EMT Jones).
8. Identify preferred method of patient transport.
9. Determine any additional resources or equipment needed.

The Evacuation Plan should be continually evaluated, and contingencies developed in the event the first plan is not effective.



Division - As Assigned	Area Location Capability	
Branch III, DIV D	EMS Responders & Capability:	FEMT Jay Sartoris, FEMP John Daley
	Equipment Available on Scene:	ALS/BLS supplies
	Medical Emergency Channel:	Calcord 156.0750 Tone 6 (156.7) tx/rx
	ETA for Ambulance to Scene:	
	Air:	
	Ground:	1 hr
	Approved Helispot:	None identified
	Lat:	
	Long:	
Branch III, DIV H	Area Location Capability	
	EMS Responders & Capability:	FEMP Nick Brandow, FEMT Ryan Souder
	Equipment Available on Scene:	ALS/BLS supplies
	Medical Emergency Channel:	Calcord 156.0750 Tone 6 (156.7) tx/rx
	ETA for Ambulance to Scene:	
	Air:	
	Ground:	1 hr
	Approved Helispot:	None identified
	Lat:	
Long:		
Branch VII, DIV S	Area Location Capability	
	EMS Responders & Capability:	FEMP Dan Nunez, FEMT Travis Moore
	Equipment Available on Scene:	ALS/BLS supplies
	Medical Emergency Channel:	Calcord 156.0750 Tone 6 (156.7) tx/rx
	ETA for Ambulance to Scene:	
	Air:	
	Ground:	1 hr
	Approved Helispot:	None identified
	Lat:	
Long:		
Branch VII, DIV T	Area Location Capability	
	EMS Responders & Capability:	FEMP David Pruit, FEMT Tim Moyles
	Equipment Available on Scene:	ALS/BLS supplies
	Medical Emergency Channel:	Calcord 156.0750 Tone 6 (156.7) tx/rx
	ETA for Ambulance to Scene:	
	Air:	
	Ground:	1 hr
	Approved Helispot:	None identified
	Lat:	
Long:		
Branch VII, DIV W	Area Location Capability	
	EMS Responders & Capability:	FEMP Richard Edwards, FEMT Paul Salvestrin
	Equipment Available on Scene:	ALS/BLS supplies
	Medical Emergency Channel:	Calcord 156.0750 Tone 6 (156.7) tx/rx
	ETA for Ambulance to Scene:	
	Air:	
	Ground:	.5 hr
	Approved Helispot:	None identified
	Lat:	
Long:		

Human Resource Message

Stress

Sometimes Incident Personnel experience stress reactions because of a traumatic event, or the cumulative effect of stressful events. Even though the event may be over, you may now be experiencing or experience later, some strong emotional or physical reactions. This may last a few days, weeks or longer.

<p>Examples of a traumatic event may include:</p> <ul style="list-style-type: none">• Personal traumatic injury• Traumatic injury to a co-worker• Aviation accident• Shelter deployment• Motor vehicle accident• Near miss• Fatality	<p>Symptoms and things to try:</p> <ul style="list-style-type: none">• Reaction is normal, you're not crazy• If you need to talk...talk- it's a healing medicine.• Maximize rest as much as possible and stay hydrated• Well-balanced meals and nutrition• Don't fight recurring thoughts, or flashbacks - they are normal and will decrease over time
	<p>Peer to Peer Support</p> <ul style="list-style-type: none">• Listen carefully• Don't take anger personally• Look out for one another• Give and respect space

Deal with stress in a healthy way. Don't let stress deal with you.

Human Resources Specialist
Marilyn Loughrey, 925-588-6711

