

# **KING INCIDENT**

## **Incident Action Plan**

**CA-ENF-023461**

**P5JEE9 (0503)**


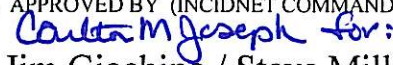
### **Operational Period**


**DAY SHIFT      9/21/14**

**0600 - 1800**





INCIDENT OBJECTIVES	1. INCIDENT NAME	2. DATE PREPARED	3. TIME PREPARED
	KING	9/20/14	1700
<b>4. OPERATIONAL PERIOD (DATE/TIME)</b> <p style="text-align: center;"><b>DAY SHIFT      9/21/14      0600 - 1800</b></p>			
<b>5. GENERAL CONTROL OBJECTIVES FOR THE INCIDENT</b>  <b>Management Objectives:</b>  <b>Provide for safety of responders and the public</b> <b>Ensure an appropriate evacuation and repopulation plan is in place and communicated</b> <b>Establish and maintain positive relationships with cooperating agencies and the public</b> <b>Provide timely and accurate incident information</b> <b>Protect economic and watershed values with safe and aggressive firefighting efforts</b> <b>Keep costs commensurate with values at risk</b>  <b>Control Objectives:</b>  <b>Keep fire North of Forebay Road and Highway 50 east of Pollock Pines</b> <b>Keep fire East of Pino Grande</b> <b>Keep fire West of Ice House Road</b> <b>Keep fire South of the Middle Fork of the American River</b>			
<b>6. WEATHER FORCAST FOR OPERATIONAL PERIOD</b> <p style="text-align: center;"><b>See Attached</b></p>			
<b>7. GENERAL/SAFETY MESSAGE</b> <p style="text-align: center;"><b>See Attached</b></p>			
<b>8. ATTACHMENTS ( X IF ATTACHED)</b>			
<input checked="" type="checkbox"/> 202	<input checked="" type="checkbox"/> SAFETY MESSAGE / LCES	<input type="checkbox"/> TRANSPORTATION MAP	
<input checked="" type="checkbox"/> 203	<input checked="" type="checkbox"/> WEATHER	<input checked="" type="checkbox"/> INCIDENT MAP	
<input checked="" type="checkbox"/> 204	<input checked="" type="checkbox"/> AIR OPERATIONS SUMMARY	<input checked="" type="checkbox"/> FIRE BEHAVIOR	
<input checked="" type="checkbox"/> 205	<input checked="" type="checkbox"/> HUMAN RESOURCE	<input checked="" type="checkbox"/> TRAINING	
<input checked="" type="checkbox"/> 206	<input type="checkbox"/> ICP / CAMP MAP	<input checked="" type="checkbox"/> FINANCE	
<input checked="" type="checkbox"/> 214	<input checked="" type="checkbox"/> FIRE WEATHER	<input type="checkbox"/>	
ICS 202	<b>9. PREPARED BY (PLANNING SECTION CHIEF)</b>  Dennis Cooper / Jason Schillinger (t)	<b>10. APPROVED BY (INCIDNET COMMANDER)</b>  for: Jim Giachino / Steve Millert (t)	

ORGANIZATION ASSIGNMENT LIST		9. Operations Section	
1. Incident Name: <b>KING (ZONE 1)</b>		Ops Chief	Les Curtis / Steve Burns (t)
2. Date: 9/20/14		Planning Ops	Don Smith / Jeb Pronto (t)
3. Time: 1700		Contingency	John Truett
4. Operational Period <b>Day Shift: September 21, 2014 0600 -1800</b>		<b>a. Branch X</b>	
Position	Name	Branch Director	Dana D'Andrea
5. Incident Commander and Command Staff		Division	1B Kim Olson / Ron Gregor (t)
Incident Commander	Jim Giachino / Steve Millert (t)	Division	1D James Edmiston/Bryan Brazeal/Cory Johnson (t)
Deputy	Carlton Joseph	Division	1F Jason Lambirth
Safety Officer	Maryl Hamel /Steve Ryberg /Charlotte Jordan (t)	<b>b. Branch XII</b>	
Information Officer	Steve Kilest / Mark Savage (t)	Branch Director	Kelly Marlin
Liaison Officer	Rick Alpert / Ken Kuykenall (t)	Division	1H Erick Stahltn / Patrick Walker / Patrick Medina (t)
6. Agency Representative		Division	1k Rodney Redinger
Eldorado NF	Laurence Crabtree	<b>c. Branch XIV</b>	
USFS Agency Admin Rep	Richard Thornburgh	Branch Director	Matt Conklin
Tahoe NF	Tom Quinn	Division	1M Deano Esades
CAL FIRE Nevada - Yuba - Placer	Randy Smith	Division	1P Taiga Rohrer
Cal OES	Gary Humphrey	<b>d. Branch XVI</b>	
PG&E	Pam Purdee	Branch Director	Don Forsyth
California Highway Patrol	Chris Sahagun	Division	1R Unstaffed
Sierra Pacific Industries	Rich Wade	Division	1T Unstaffed
Placer County Sheriff	Kevin Borden		1W Corey Rose
		Division	1Y Michael Cherry / David Soldavini (t)
		<b>e.</b>	
7. Planning Section		Branch Director	
Plans Chief	Dennis Cooper / Jason Schillinger (t)	Division	
Resources Unit	R. Ashby / J. Switzler / J. Wilson / E. Matye (t)	Division	
Situation Unit	T. Morelock / M. McHargue / A. Mitchell	Division	
Human Resources	Marilyn Loughrey	<b>f.</b>	
READ	Karin Klemic	Branch Director	
Fire Behavior	Shelly Crook / Denny O'Neil	Division	
Meteorologist	Jason Clapp	Division	
GISS	Brad Weisshaupt / Eric Shreve (t)	<b>g. Air Operations</b>	
CTSP	Jim Youngblood / Chris Crowder (t)	Air Operations Branch Director	John Keesee
TNSP	Jim Mitchell (t)	Air Support Supervisor	Craig Dado
DEMOB	Dan Baggau / Jim Cody	Helicopter Coordinator	Lane Caldwell / John Chin
8. Logistics Section		Heli Base Manager	Dave Ito / Travis Taylor (t)
Logistics Chief	H.Crane / D.Martin / D. Haston / K. Kumpfe (t)	<b>10. Finance/Administration Section</b>	
Supply Unit	Michael Bradford	Finance/Admin. Chief	Teresa Fork / Peter Bymers
Facilities Unit	Jim Eckroth / Wally Grogan	Cost Appro.	Jan Zacharias
Ground Support Unit	John Badaracco	Time Unit	Janice Brown (t)
Medical Unit	Robert Russell / Newton Ong (t)	Procurement Unit	
Food Unit	Dennis Durham	Compensation/Claims Unit	Elaine Downing
Receiving/Distribution	Joe McMahon	Cost Unit	Roger Siemens
Communications Unit	Greg Ely / Tim Maguire (t)	Personnel Time Recorder	Debra Luna (t)
Ordering Manager	Sharon Porter / Jane Arteaga	Prepared by (Resource Unit Leader) Eric Matye (t) 	



## FIRE WEATHER FORECAST



**FORECAST NO:** 10  
**PREDICTION FOR:** Sunday Day/Night SHIFT

**INCIDENT NAME:** King Fire  
**UNIT:** Eldorado National Forest

**SHIFT DATE:** 21 September 2014

**SIGNED:** *Jason Clapp*

**TIME AND DATE**  
**FORECAST ISSUED:** 2100 / 20 September 2014

Jason Clapp  
**Incident Meteorologist**

### WEATHER TODAY:

**WEATHER:** Potential Thunderstorms near fire. Be prepared for outflow winds. The Low drifts east of the fire with a mostly cloudy sky and a slight chance of light showers in the morning. A slight chance of afternoon t-storms exists near the eastern edge of the fire. A mostly cloudy sky will likely moderate temperatures and RH. SW terrain-driven slope winds will dominate the fire today with NW steering winds pushing the smoke toward the SE.

<b>TEMPERATURES:</b>	70-78	<b>Trend: Down 3 – 5%</b>
<b>RELATIVE HUMIDITY:</b>	Zone 1: 45-60%	<b>Trend: Up 5 – 10%</b>
	Zone 2: 40-50%	<b>Trend: Up 5 – 10%</b>

### **20 FT WINDS:**

**ZONE 1 - Ridgetop:** Morning winds from E 10-15 mph with gusts to 25 mph over Hell Hole/French Meadows area through 0900, before weakening and shifting NW by noon.

**Slope/Valley:** Downcanyon 5-10 mph with gusts 15 mph (strongest 0500-0900) and shift WSW 5-10 mph around 1500.

**ZONE 2 - Ridgetop:** NE 4-9 mph shifting westerly 3-7 with afternoon gusts to 12 mph.

**Slope/Valley:** Wind will shift upslope/upcanyon 3-5 mph between 0900-1000, increasing to 4-7 mph with gusts 10 mph in aligned canyons.

**LAL:** 2.      **STABILITY/INVERSION:** Inversions breaking in deep canyons by 1100.

**WEATHER DISCUSSION:** Terrain winds dominate the fire today with ridge winds over northern portions of Zone 1 shifting NE to NW. Mostly cloudy with possible light morning showers/afternoon isolated t-storms today. Increasing SW winds dominate the fire Monday with even stronger winds Tuesday into Wednesday ahead of the upper level trough. Possible precipitation late Wed into Thu.

**WEATHER FOR SUNDAY NIGHT:** Partly cloudy with smoke settling downcanyon after 2200.

Low temperatures: Thermal belts/ridges 63-68... Valleys 55-60.

Max RH: Thermal belts/ridges 50-60... Valleys 70-90%.

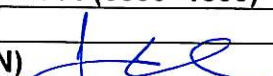
### **20FT Winds:**

Ridge – N 3-7 mph shifting ENE 6-10 mph after 2100 with Zone 1 gusts to 15-20 after 2400.

Slope/valley – Transition to downslope 2-5 mph. Downcanyon wind gusts 4-9 mph after.

**OUTLOOK FOR MONDAY:** SW wind aloft dominates with warmer temps and lower RH. High temps: 75-82. Min RH: 28-35%. Ridge winds: SW winds from 6-10 with afternoon gusts to 15-20 mph. Valley/Slope winds: Downslope 3-6 mph shifting upslope/upcanyon 4-8 mph late morning with afternoon gusts 15 mph in aligned canyons.

# ZONE 1: KING FIRE NORTH - FIRE BEHAVIOR FORECAST

FORECAST NUMBER: 11	TYPE OF FIRE: Wildfire
FIRE NAME: King Incident CA-ENF-023461	OPERATIONAL PERIOD: 9/21/2014 (0600 -1800)
DATE ISSUED: 9/20/14	TIME ISSUED: 2100 hours
UNIT: ENF	SIGNED: Denny O'Neil (FBAN) 

## INPUTS

### WEATHER SUMMARY-SEE ATTACHED FIRE WEATHER FORCAST

Potential for thunderstorms, be prepared for outflow winds. The Low drifts east of the fire with a mostly cloudy sky and a slight chance of light showers in the morning. Mostly cloudy.

Temperatures: 70-78 Down 5 from yesterday. Relative Humidity: 25-40% Slight change

Ridgetop winds – E 10-15 mph with gusts to 25 mph over Hell Hole/French Meadow until 0900, then weakening and shifting to NW by noon.

Slope/Valley Winds – Down canyon 5-10 mph with gust to 15 mph (strongest 0500-0900) and shifting to WSW 5-10 mph around 1500.

**FUELS** –The primary carrier of fire is timber. The fire area has many areas with fuel treatments and timber operations, which have created open and closed canopies and understories of grass, regeneration and brush. There are also areas of brush and grass. *Live and dead fuels are at critically low levels!*

**FIRE DANGER INDICES**-Thresholds for Active Fire Behavior in the King Fire area (Eldorado NF PocketCard):  
\* 20ft Winds (over 5 mph), \*RH (under 22%), \*Temperature (over 84°) and \*1000hr FMC (under 9%).

## OUTPUTS

### FIRE BEHAVIOR SPECIFIC

**CRITICAL BURN PERIOD** = 0900 - 2000 hours  
**LIVE FUEL MOISTURE** = Below Critical Threshold  
**RATE OF SPREAD**= 10 Chains/Hour

**POTENTIAL FOR SPOTTING** = Moderate-High  
**SPOTTING DISTANCE** = 1/4-1/2 Mile  
**FLAME LENGTHS**= 1-10 ft

**DIV H & J** - The fire will continue to back down into long canyon. Expect the greatest spread potential in the area of the DIV H/J break. Heads up for the potential of a slope reversal if the fire does make it into the bottom of Long Canyon. Expect surface fire and single tree torching.

**DIV L/M**–The fire will continue to spread into the 2001 Star Fire scar. Lighter fuels in this area will affect spread rates positively and reduce the resistance to control, affording a management opportunity.

**DIV P** - The spot fire that is burning on the east of French Meadows Reservoir will continue to burn to the East toward Chipmunk Ridge and up the middle fork of the American River toward the Forest Hill Divide. Expect the main fire edge to spread north along the ridge between the reservoirs towards the large spot fire for 1-2 miles.

**DIV Q** – The fire will continue to burn NE below Hell Hole Reservoir toward Buck Meadow and Bunker Hill. Expect surface fire and single/group tree torching when fuels and topography are in alignment.

**DIV S** - The fire will continue to spread into to the E and NE. Expect surface fire and single/group tree torching when fuels and topography are in alignment.

### AIR OPERATIONS

Smoky conditions likely, the west side of the fire most of the day and the south side in the afternoon.

**Sunrise - 0650 hours**      **Sunset 1902 hours**

### SAFETY

- Dead and live fuels are at critical levels. Alignment of fuels with topography or wind can initiate a rapid change in fire behavior.
- When developing strategies and tactics, safety zones and escape routes you should be evaluating potential fire behavior (worst case scenario), not just observed fire behavior.

<b>Division Assignment List</b>			1. Branch <b>X</b>		2. Division/Group <b>1 B</b>		
3. Incident Name <b>KING - ZONE 1</b>			4. Operational Period 09/21/14 Sunday Day Shift 0600 - 1800				
5. Operations Personnel							
Operations Chief		LES CURTIS; STEVE BURNS (t)		Division/Group Supervisor		KIM OLSON; RON GREGOR (t)	
Deputy Operations Chief				Air Attack Supervisor			
Branch Director		DANA D'ANDREA		Safety Officer		M HAMEL; S. RYBERG; C. JORDAN	
6. Resources Assigned this Period							
Strike Team/Task Force/ Resource Designator		Leader		Num of Pers.	Trans. Y/N	Drop Off PT./Time	Pick Up PT./Time
CRW T1 UKONOM IHC C-92 9/29		KEITH SMITH		19	N	DP 54 0800	1800
CRW T1 PIKE IHC C-116 9/25		JOHN ALLBRIGHT		20	N	DP 54 0800	1800
CRW T1 VALYERMO IHC C-133 9/21		JEFFERY LOCKE		18	N	DP 54 0800	1800
CRW T2IA CAC #4 C-16 9/30		RON E BROWN		20	N	DP 54 0800	1800
CRW T2IA INTERTRIBAL #1 C-12 9/29		JACOB WISEHART		18	N	DP 54 0800	1800
CRW T2IA MS MSS#1 C-13 9/30		JOE MILES		20	N	DP 54 0800	1800
CRW T2 MQ FRANCO 13137 C-45 9/30		FRANCIS FRANCO		20	N	DP 54 0800	1800
CRW T2 DIAMOND C-40 9/30		LARRY ECKLEMAN		20	N	DP 54 0800	1800
CRW T2 PACIFIC OA C-46 9/30		WESLEY DODDS		20	N	DP 54 0800	1800
TF ENF KING #6						DP 54 0800	1800
TFLD O-501		ZACHARY COGLE		1	N	DP 54 0800	1800
ENG T6 PACIFIC OASIS E-343 9/30		STEVEN MILLER		3	N	DP 54 0800	1800
ENG T6 FAIRVIEW E-337 9/30		DAN MORGAN		3	N	DP 54 0800	1800
ENG T6 FIRESTORM E-341 9/30		KEN NEWITT		3	N	DP 54 0800	1800
ENG T6 FIRESTORM E-336 9/30		JOSHUA BRADLEY		3	N	DP 54 0800	1800
ENG T6 GH RANCH, E-354 9/30		JEFFREY DAVIS		3	N	DP 54 0800	1800
7. Control Operations							
Construct line using available resources from the Branch III / X break to the Division 1B / 1D break.							
8. Special Instructions							
All resources report to Foresthill Mill ICP after your shift.							
All DIVS need to download information to the Sit Unit for all completed line and proposed line.							
Noxious weeds are marked by orange "noxious weed" flagging. Minimize or avoid activities in these areas.							
Sensitive areas are marked with pink/black checkerboard flagging. Minimize ground disturbing activities in these areas.							
* Indicates a 24 hour resource 0600-0600							
9. Division/Group Communications Summary							
Function	Frequency - RX	Frequency - TX	Tone	System	Channel	System	Channel
Command	166.6125	168.4000	136.5	NIFC C4	1		
Tactical Div/Group	168.0500	168.0500		NIFC T1	5		
Logistics							
Air to Ground	169.1500	169.1500		A/G CMD	13		
Prepared by (Resource Unit Leader) G. Thompson / J. Switzler / E. Mayte (t)			Approved by (Planning Section Chief) Dennis Cooper / Jason Schillinger (t)		Date Prepared 09/20/14		Time Prepared 1406

<b>Division Assignment List</b>		1. Branch <b>X</b>		2. Division/Group <b>1 B</b>			
3. Incident Name <b>KING - ZONE 1</b>		4. Operational Period 09/21/14 Sunday Day Shift 0600 - 1800					
5. Operations Personnel							
Operations Chief		LES CURTIS; STEVE BURNS (t)		Division/Group Supervisor		KIM OLSON; RON GREGOR (t)	
Deputy Operations Chief				Air Attack Supervisor			
Branch Director		DANA D'ANDREA		Safety Officer		M HAMEL; S. RYBERG; C. JORDAN	
6. Resources Assigned this Period							
Strike Team/Task Force/ Resource Designator		Leader	Num of Pers.	Trans. Y/N	Drop Off PT./Time	Pick Up PT./Time	
T/F ENF KING #5					DP 54 0800	1800	
STEN O-661 10/2		JILL VUGTEVEEN	1	N	DP 54 0800	1800	
TFLD O-660 10/3		RYAN SANCHEY	1	N	DP 54 0800	1800	
TFLD O-711 10/3		CHET JENSEN (t)	1	N	DP 54 0800	1800	
ENG T6 UWF E-486 9/29		RYAN TAYLOR	3	N	DP 54 0800	1800	
ENG T6 E-344 10/1		COLTON MCCARTHY	3	N	DP 54 0800	1800	
ENG T6 PACIFIC OASIS E-342 9/30		KENT SMITH	3	N	DP 54 0800	1800	
ENG T6 E-356 9/30		BILL MACAULEY	3	N	DP 54 0800	1800	
ENG T6 FIRESTORM E-339 9/30		RON SARTAIN	3	N	DP 54 0800	1800	
ENG S/T PNF 3660C E-87 9/29		RICH SIMON	27	N	DP 54 0800	1800	
WT T2 AWB INC. E-6 9/28		LEE SCROGGINS	1	N	DP 54 0800	1800	
WT T1 C&H VETERAN ENT E-252* 9/29		JAMES CALDWELL	2	N	DP 54 0800	1800	
WT T1 WATER BY C E-259 9/30		JOHN CARMODY	1	N	DP 54 0800	1800	
WT T1 PRO DUMP E-278* 9/29		CARLOS FURTADO	2	N	DP 54 0800	1800	
FALC A & F ENTERP O-602 10/1			2	N	DP 54 0800	1800	
FALC TREE MASTER O-603 10/1			2	N	DP 54 0800	1800	
FALC PRO PLUS O-604 10/2			2	N	DP 54 0800	1800	
FALC PRO PLUS FAL O-605 10/1			2	N	DP 54 0800	1800	
FALB MODULE NZF O-606 10/1		NZF-FALL MODULE	2	N	DP 54 0800	1800	
FALB O-609		ROBERT HENSLEY					
7. Control Operations							
Construct line using available resources from the Branch III / X break to the Division 1B / 1D break.							
8. Special Instructions							
All resources report to Foresthill Mill ICP after your shift.							
All DIVS need to download information to the Sit Unit for all completed line and proposed line.							
Noxious weeds are marked by orange "noxious weed" flagging. Minimize or avoid activities in these areas.							
Sensitive areas are marked with pink/black checkerboard flagging. Minimize ground disturbing activities in these areas.							
* Indicates a 24 hour resource 0600-0600							
9. Division/Group Communications Summary							
Function	Frequency - RX	Frequency - TX	Tone	System	Channel	System	Channel
Command	166.6125	168.4000	136.5	NIFC C4	1		
Tactical Div/Group	168.0500	168.0500		NIFC T1	5		
Logistics							
Air to Ground	169.1500	169.1500		A/G CMD	13		
Prepared by (Resource Unit Leader)			Approved by (Planning Section Chief)		Date Prepared	Time Prepared	
G. Thompson / J. Switzler / E. Mayte (t)			Dennis Cooper / Jason Schillinger (t)		09/20/14	1406	



<b>Division Assignment List</b>			1. Branch <b>X</b>		2. Division/Group <b>1 B</b>		
3. Incident Name <b>KING - ZONE 1</b>			4. Operational Period <b>09/21/14 Sunday Day Shift 0600 - 1800</b>				
5. Operations Personnel							
Operations Chief		LES CURTIS; STEVE BURNS (t)		Division/Group Supervisor		KIM OLSON; RON GREGOR (t)	
Deputy Operations Chief				Air Attack Supervisor			
Branch Director		DANA D'ANDREA		Safety Officer		M HAMEL; S. RYBERG; C. JORDAN	
6. Resources Assigned this Period							
Strike Team/Task Force/ Resource Designator		Leader	Num of Pers.	Trans. Y/N	Drop Off PT./Time	Pick Up PT./Time	
SOFR O-40		JOHN MARTINEZ	1	N		1800	
FEMP O-428 10/1		NICK BRANDOW	1	N		1800	
FEMT O-432 10/1		RYAN SOUDER	1	N		1800	
7. Control Operations Construct line using available resources from the Branch III / X break to the Division 1B / 1D break.							
8. Special Instructions All resources report to Foresthill Mill ICP after your shift.  All DIVS need to download information to the Sit Unit for all completed line and proposed line.  Noxious weeds are marked by orange "noxious weed" flagging. Minimize or avoid activities in these areas. Sensitive areas are marked with pink/black checkerboard flagging. Minimize ground disturbing activities in these areas.  * Indicates a 24 hour resource 0600-0600							
9. Division/Group Communications Summary							
Function	Frequency - RX	Frequency - TX	Tone	System	Channel	System	Channel
Command	166.6125	168.4000	136.5	NIFC C4	1		
Tactical Div/Group	168.0500	168.0500		NIFC T1	5		
Logistics							
Air to Ground	169.1500	169.1500		A/G CMD	13		
Prepared by (Resource Unit Leader)		Approved by (Planning Section Chief)		Date Prepared		Time Prepared	
G. Thompson / J. Switzler / E. Mayte (t)		Dennis Cooper / Jason Schillinger (t)		09/20/14		1534	

<b>Division Assignment List</b>		1. Branch <b>X</b>		2. Division/Group <b>1 D</b>			
3. Incident Name <b>KING - ZONE 1</b>		4. Operational Period 09/21/14 Sunday Day Shift 0600 - 1800					
5. Operations Personnel							
Operations Chief	LES CURTIS; STEVE BURNS (t)		Division/Group Supervisor	EDMISTON; BRAZZEAL; JOHNSON (t)			
Deputy Operations Chief			Air Attack Supervisor				
Branch Director	DANA D'ANDREA		Safety Officer	M HAMEL; S. RYBERG; C. JORDAN			
6. Resources Assigned this Period							
Strike Team/Task Force/ Resource Designator	Leader	Num of Pers.	Trans. Y/N	Drop Off PT./Time	Pick Up PT./Time		
CRW T1 AMERICAN RIVER IHC C-87	ADAM LEYBA	20	N	DP 102 0800	1800		
CRW T2 NAVAJO SCOUTS 2 C-4 9/30	ALTON JOHN	20	N	DP 102 0800	1800		
CRW T2IA PACIFIC OASIS C-26 9/28	KEN WILSON	15	N	DP 102 0800	1800		
CRW T2IA UTAH CNTY #2 C-96 9/27	ANDREW SIEBACH	18	N	DP 102 0800	1800		
CRW T2IA NAVAJO SCOUTS 1 C-101	TERRY TSO	20	N	DP 102 0800	1800		
ENG S/T OES 4811A E-93 9/29	SCOTT ARGANBRIGHT	21	N	DP 102 0800	1800		
ENG S/T OES 2813A E-384 9/29	THOMAS SIRAGUSA	21	N	DP 102 0800	1800		
ENG S/T XMR 2142C E-159 9/29	MARK MILLS	22	N	DP 102 0800	1800		
ENG S/T XRIC 6074C E-306 9/30	STEVE KEAN	22	N	DP 102 0800	1800		
ENG S/T XCC 2040C E-158 9/29	SEAN PERKINS	22	N	DP 102 0800	1800		
ENG S/T XSL 1471C E-157 9/29	KEVIN TAYLOR	18	N	DP 102 0800	1800		
DOZ T2 AMADOR MECH E-196*	MERVIN VICINI	2	N	DP 102 0800	1800		
DOZ T2 LENAHN'S WATER E-212*	JOHN MONTZ	2	N	DP 102 0800	1800		
DOZ T2 1540 E-148*	MICHAEL WATERS	2	N	DP 102 0800	1800		
DOZ T2 AAA EQUIP E-207*	BRENDON SIMUNACI	2	N	DP 102 0800	1800		
DOZ T2 YTS E-197*	RICHARD JAUGCH	2	N	DP 102 0800	1800		
DOZ T2 TOM'S EARTH E-101* 10/1	JOHN THORNTON	4	N	DP 102 0800	1800		
SOF2 O-699	PEDRO VILLA	1	N	DP 102 0800	1800		
FEMP O-677	NICK GABBARD	1	N	DP 102 0800	1800		
FEMT O-429	MITCH CARNEY	1	N	DP 102 0800	1800		
7. Control Operations							
Construct line from the Division 1B / 1D break to the Division 1D / 1F break.							
8. Special Instructions							
All resources report to Foresthill Mill ICP after your shift.							
All DIVS need to download information to the Sit Unit for all completed line and proposed line.							
Noxious weeds are marked by orange "noxious weed" flagging. Minimize or avoid activities in these areas.							
Sensitive areas are marked with pink/black checkerboard flagging. Minimize ground disturbing activities in these areas.							
* Indicates a 24 hour resource 0600-0600							
9. Division/Group Communications Summary							
Function	Frequency - RX	Frequency - TX	Tone	System	Channel	System	Channel
Command	166.6125	168.4000	136.5	NIFC C4	1		
Tactical Div/Group	168.2000	168.2000		NIFC T2	6		
Logistics							
Air to Ground	169.1500	169.1500		A/G CMD	13		
Prepared by (Resource Unit Leader)		Approved by (Planning Section Chief)		Date Prepared		Time Prepared	
G. Thompson / J. Switzler / E. Mayte (t)		Dennis Cooper / Jason Schillinger (t)		09/20/14		1406	

<b>Division Assignment List</b>	1. Branch <b>X</b>	2. Division/Group <b>1 F</b>
---------------------------------	-----------------------	---------------------------------

3. Incident Name <b>KING - ZONE 1</b>	4. Operational Period <b>09/21/14 Sunday Day Shift 0600 - 1800</b>
--	---

5. Operations Personnel			
Operations Chief	LES CURTIS; STEVE BURNS (t)	Division/Group Supervisor	JASON LAMBIRTH
Deputy Operations Chief		Air Attack Supervisor	
Branch Director	DANA D'ANDREA	Safety Officer	M HAMEL; S. RYBERG; C. JORDAN

6. Resources Assigned this Period						
Strike Team/Task Force/ Resource Designator	Leader	Num of Pers.	Trans. Y/N	Drop Off PT./Time	Pick Up PT./Time	
CRW T1 IDAHO CITY IHC C-88	RALPH RANDALL LAMB	22	N	DP 102 0800	1800	
CRW T2IA SAN CARLOS C-5 9/30	THOMAS PATTEN	18	N	DP 102 0800	1800	
CRW T2IA R10 #5 C-22 10/1	ROBERT TODD BERNEY	19	N	DP 102 0800	1800	
ENG T/F KING #4				DP 102 0800	1800	
TFLD O-662	CORY CALNAN	1	N	DP 102 0800	1800	
ENG T6 CPS 62 E-374	RYAN MORGAN	3	N	DP 102 0800	1800	
ENG T6 TAHOE SAGE FIRE E-358	KEVIN STUDLEY	3	N	DP 102 0800	1800	
ENG T6 HIGH SIERRA E-338	JERRY VICE	3	N	DP 102 0800	1800	
ENG T6 HIGH SIERRA E-340	JACOB ROWSEY	3	N	DP 102 0800	1800	
ENG T6 333 BLY MT FIRE E-355	MARK GROVES	3	N	DP 102 0800	1800	
SOF2 O-699	PETE VILLA	1	N	DP 102 0800	1800	

7. Control Operations  
Construct line from the Division 1D / 1F break to the Branch X / XII break.

8. Special Instructions  
All resources report to Foresthill Mill ICP after your shift.  
All DIVS need to download information to the Sit Unit for all completed line and proposed line.  
Noxious weeds are marked by orange "noxious weed" flagging. Minimize or avoid activities in these areas.  
Sensitive areas are marked with pink/black checkerboard flagging. Minimize ground disturbing activities in these areas.  
\* Indicates a 24 hour resource 0600-0600

9. Division/Group Communications Summary							
Function	Frequency - RX	Frequency - TX	Tone	System	Channel	System	Channel
Command	166.6125	168.4000	136.5	NIFC C4	1		
Tactical Div/Group	166.7250	166.7250		NIFC T5	7		
Logistics							
Air to Ground	169.1500	169.1500		A/G CMD	13		

Prepared by (Resource Unit Leader) G. Thompson; J Switzler; E. Matye (t)	Approved by (Planning Section Chief) Dennis Cooper/Jason Schillinger	Date Prepared 09/20/14	Time Prepared 1406
---	---	---------------------------	-----------------------

<b>Division Assignment List</b>			1. Branch <b>XII</b>		2. Division/Group <b>1 H</b>		
3. Incident Name <b>KING - ZONE 1</b>			4. Operational Period <b>09/21/14 Sunday Day Shift 0600 - 1800</b>				
5. Operations Personnel							
Operations Chief		LES CURTIS; STEVE BURNS (t)		Division/Group Supervisor		STAHLIN; WALKER; MEDINA (t)	
Deputy Operations Chief				Air Attack Supervisor			
Branch Director		KELLY MARTIN		Safety Officer		M HAMEL; S. RYBERG; C. JORDAN	
6. Resources Assigned this Period							
Strike Team/Task Force/ Resource Designator		Leader		Num of Pers.	Trans. Y/N	Drop Off PT./Time	Pick Up PT./Time
CRW T1 TRUCKEE IHC C-145 9/25		BOBBY F HUBBY		20	N	ROBINSON CG 0800	1800
CRW T2IA GLOBE IHC C-136 10/2		ROGERS T BROWN		19	N	ROBINSON CG 0800	1800
CRW T1 TRINITY IHC C-7 9/21		JUSTIN JEUDE		21	N	ROBINSON CG 0800	1800
CRW T1 ELDORADO IHC C-85 9/30		WILLIAM K HARRIS		20	N	ROBINSON CG 0800	1800
CRW T1 PLUMAS IHC C-117 9/19		JACK SEVELSON		20	N	ROBINSON CG 0800	1800
CRW T1 AUGUSTA HOTSHOTS C-6 10/4				20	N	ROBINSON CG 0800	1800
CRW T2IA N. ARIZONA C-143 10/1		CHRISTOPHER BROOKS		19	N	ROBINSON CG 0800	1800
T/F KING # 2						ROBINSON CG 0800	1800
TFLD O-696		DAVID ZUARES		1	N	ROBINSON CG 0800	1800
ENG T6 ID-IFD E-352 10/1		DAVID BRIZEDINE		4	N	ROBINSON CG 0800	1800
ENG T6 LOS PINOS E-362 10/1		JASON RAMEY		3	N	ROBINSON CG 0800	1800
ENG T6 PSF 6112 E-379 10/2		CHRIS JONES		3	N	ROBINSON CG 0800	1800
ENG T6 LONGMONT E-369 10/2		JUAN SALOMON		3	N	ROBINSON CG 0800	1800
DOZ T2 #1 - SPENCER E-111* 10/1		MIKE SPENCER		2	N	ROBINSON CG 0800	1800
DOZ T2 GRAHAM E-42 9/28		JEFF GRAHAM		2	N	ROBINSON CG 0800	1800
WT T1 SILVER E-141 9/30				2	N	ROBINSON CG 0800	1800
WT T2 TMU 4 E-255 9/29		SPENCER GRISCOM		2	N	ROBINSON CG 0800	1800
W/T SUP T1 E-133 10/2		GEORGE NEILLS		2	N	ROBINSON CG 0800	1800
WT T1 SPECE INDUSTRIAL E-126* 9/30		STEVE ROOKS		4	N	ROBINSON CG 0800	1800
WT T1 G&G FIRE SUPP E-131* 9/30		GREG WHIPPLE		4	N	ROBINSON CG 0800	1800
7. Control Operations							
Construct line to contain fire edge in the area of French Meadow resevoir.							
8. Special Instructions							
All resouces report to Foresthill Mill ICP after your shift.							
All DIVS need to download information to the Sit Unit for all completed line and proposed line.							
Noxious weeds are marked by orange "noxious weed" flagging. Minimize or avoid activities in these areas.							
Sensitive areas are marked with pink/black checkerboard flagging. Minimize ground disturbing activities in these areas.							
* Indicates a 24 hour resource 0600-0600							
9. Division/Group Communications Summary							
Function	Frequency - RX	Frequency - TX	Tone	System	Channel	System	Channel
Command	166.6125	168.4000	136.5	NIFC C4	1		
Tactical Div/Group	166.7750	166.7750		NIFC T6	8		
Logistics							
Air to Ground	169.1500	169.1500		A/G CMD	13		
Prepared by (Resource Unit Leader) G. Thompson / J. Switzler / E. Mayte (t)			Approved by (Planning Section Chief) Dennis Cooper / Jason Schillinger (t)		Date Prepared 09/20/14		Time Prepared 1405

<b>Division Assignment List</b>	1. Branch <b>XII</b>	2. Division/Group <b>1 H</b>
---------------------------------	-------------------------	---------------------------------

3. Incident Name <b>KING - ZONE 1</b>	4. Operational Period 09/21/14 Sunday Day Shift 0600 - 1800
--	--

5. Operations Personnel

Operations Chief	LES CURTIS; STEVE BURNS (t)	Division/Group Supervisor	STAHLIN; WALKER; MEDINA (t)
Deputy Operations Chief		Air Attack Supervisor	
Branch Director	KELLY MARTIN	Safety Officer	M HAMEL; S. RYBERG; C. JORDAN

6. Resources Assigned this Period

Strike Team/Task Force/ Resource Designator	Leader	Num of Pers.	Trans. Y/N	Drop Off PT./Time	Pick Up PT./Time
HEQB O-261	DARIC BURR	1	N	ROBINSON CG 0800	1800
HEQB O-242	BRANDON WOODWARD	1	N	ROBINSON CG 0800	1800
HEQB O-245	ALMA LEITHEAD	1	N	ROBINSON CG 0800	1800
SOFR O-141	RICK CLARKE	1	N	ROBINSON CG 0800	1800
SOFR O-142	MANI BOUSLAUGH (t)	1	N	ROBINSON CG 0800	1800

7. Control Operations

Construct line to contain fire edge in the area of French Meadow resevoir.

8. Special Instructions

All resouces report to Foresthill Mill ICP after your shift.

All DIVS need to download information to the Sit Unit for all completed line and proposed line.

Noxious weeds are marked by orange "noxious weed" flagging. Minimize or avoid activities in these areas.

Sensitive areas are marked with pink/black checkerboard flagging. Minimize ground disturbing activities in these areas.

\* Indicates a 24 hour resource 0600-0600

9. Division/Group Communications Summary

Function	Frequency - RX	Frequency - TX	Tone	System	Channel	System	Channel
Command	166.6125	168.4000	136.5	NIFC C4	1		
Tactical Div/Group	166.7750	166.7750		NIFC T6	8		
Logistics							
Air to Ground	169.1500	169.1500		A/G CMD	13		

Prepared by (Resource Unit Leader) G. Thompson / J. Switzler / E. Mayte (t)	Approved by (Planning Section Chief) Dennis Cooper / Jason Schillinger (t)	Date Prepared 09/20/14	Time Prepared 2213
--	---	---------------------------	-----------------------

<b>Division Assignment List</b>		1. Branch <b>XII</b>		2. Division/Group <b>1 K</b>			
3. Incident Name <b>KING - ZONE 1</b>		4. Operational Period <b>09/21/14 Sunday Day Shift 0600 - 1800</b>					
5. Operations Personnel							
Operations Chief	LES CURTIS; STEVE BURNS (t)			Division/Group Supervisor	RODNEY REDINGER		
Deputy Operations Chief				Air Attack Supervisor			
Branch Director	KELLY MARTIN			Safety Officer	M HAMEL; S. RYBERG; C. JORDAN		
6. Resources Assigned this Period							
Strike Team/Task Force/ Resource Designator	Leader	Num of Pers.	Trans. Y/N	Drop Off PT./Time	Pick Up PT./Time		
CRW T1 PALOMAR IHC C-146 9/23	JOSE ORTEGA	20	N	0600	1800		
CRW T2IA ALAMO RGLRS C-14 9/30	DARRELL EAVES	21	N	0600	1800		
CRW T2 MQ FRANCO 13135 C-43 9/30	ANDREW HENRY	20	N	0600	1800		
CRW T2 GH RANCH 13099 C-42 9/30	LEONARD TOWNSEND	20	N	0600	1800		
CRW T2 GH RANCH C-41 9/30	ALLEN BACON	20	N	0600	1800		
CRW CHESTER HELITAK	JAYSON WALKER	13	N	0600	1800		
DOZ T2 BOB MURRAY E-107 10/1	BOB MURRAY	4	N	0600	1800		
DOZ T2 JB LOGGING E-115 10/1	KRISTI WILDER	2	N	0600	1800		
DOZER - T2 - DOBSON E-119 10/2	VERN MCCKINNEY	2	N	0600	1800		
SOF2 O-657	RICHARD GEARHART	1	N	0600	1800		
FEMP O-108 9/28	MATTHEW COBB	1	N	0600	1800		
FEMT O-435	BEN SEBOK	1	N	0600	1800		
7. Control Operations							
Construct line from Robinson Creek C.G. along Soda Springs Rd. to Highway 80.							
8. Special Instructions							
All resources report to Foresthill Mill ICP after your shift.							
All DIVS need to download information to the Sit Unit for all completed line and proposed line.							
Noxious weeds are marked by orange "noxious weed" flagging. Minimize or avoid activities in these areas.							
Sensitive areas are marked with pink/black checkerboard flagging. Minimize ground disturbing activities in these areas.							
* Indicates a 24 hour resource 0600-0600							
9. Division/Group Communications Summary							
Function	Frequency - RX	Frequency - TX	Tone	System	Channel	System	Channel
Command	166.6125	168.4000	136.5	NIFC C4	1		
Tactical Div/Group	168.2500	168.2500		NIFC T7	9		
Logistics							
Air to Ground	169.1500	169.1500		A/G CMD	13		
Prepared by (Resource Unit Leader)		Approved by (Planning Section Chief)		Date Prepared		Time Prepared	
G. Thompson / J. Switzler / E. Mayte (t)		Dennis Cooper / Jason Schillinger (t)		09/20/14		1405	

<b>Division Assignment List</b>	1. Branch <b>XIV</b>	2. Division/Group <b>1 M</b>
---------------------------------	-------------------------	---------------------------------

3. Incident Name <b>KING - ZONE 1</b>	4. Operational Period <b>09/21/14 Sunday Day Shift 0600 - 1800</b>
--	---

5. Operations Personnel			
Operations Chief	LES CURTIS / STEVE BURNS (t)	Division/Group Supervisor	DEANO ESADES
Deputy Operations Chief		Air Attack Supervisor	
Branch Director	MATT CONKLIN	Safety Officer	M. HAMEL; S. RYBERG; C. JORDAN

6. Resources Assigned this Period					
Strike Team/Task Force/ Resource Designator	Leader	Num of Pers.	Trans. Y/N	Drop Off PT./Time	Pick Up PT./Time
UNSTAFFED					

7. Control Operations  
In preparation for future control lines, scout and construct line through timber stringers from Branch XII/XIV break to the Division 1M/1P break.

8. Special Instructions  
All resources report to Foresthill Mill ICP after your shift.  
  
All DIVS need to download information to the Sit Unit for all completed line and proposed line.  
  
Identify resources to respond for initial attack. Noxious weeds are marked by orange "noxious weed" flagging. Minimize or avoid activities in these areas.  
Sensitive areas are marked with pink/black checkerboard flagging. Minimize ground disturbing activities in these areas.  
  
\* Indicates a 24 hour resource 0600-0600

9. Division/Group Communications Summary							
Function	Frequency - RX	Frequency - TX	Tone	System	Channel	System	Channel
Command	166.6125	168.4000	136.5	NIFC C4	1		
Tactical Div/Group	166.5500	166.5500		R5 T4	10		
Logistics							
Air to Ground	169.1500	169.1500		A/G CMD	13		
Prepared by (Resource Unit Leader) G. Thompson / J. Switzler / Eric Mayte (t)		Approved by (Planning Section Chief) Dennis Cooper / Jason Schillinger (t)			Date Prepared 09/20/14		Time Prepared 1405

<b>Division Assignment List</b>	1. Branch <b>XIV</b>	2. Division/Group <b>1 P</b>
---------------------------------	-------------------------	---------------------------------

3. Incident Name <b>KING - ZONE 1</b>	4. Operational Period 09/21/14 Sunday Day Shift 0600 - 1800
--	--

5. Operations Personnel			
Operations Chief	LES CURTIS; STEVE BURNS (t)	Division/Group Supervisor	TAIGA ROHRER
Deputy Operations Chief		Air Attack Supervisor	
Branch Director	MATT CONKLIN	Safety Officer	M. HAMEL; S. RYBERG; C. JORDAN

6. Resources Assigned this Period					
Strike Team/Task Force/ Resource Designator	Leader	Num of Pers.	Trans. Y/N	Drop Off PT./Time	Pick Up PT./Time
UNSTAFFED					

7. Control Operations  
 In preparation for future control lines, scout and construct line through timber stringers from Division 1M/1P break to the Branch XIV/XVI break.

8. Special Instructions  
 All resouces report to Foresthill Mill ICP after your shift.  
  
 All DIVS need to download information to the Sit Unit for all completed line and proposed line.  
  
 Noxious weeds are marked by orange "noxious weed" flagging. Minimize or avoid activities in these areas.  
 Sensitive areas are marked with pink/black checkerboard flagging. Minimize ground disturbing activities in these areas.  
  
 \* Indicates a 24 hour resource 0600-0600

9. Division/Group Communications Summary							
Function	Frequency - RX	Frequency - TX	Tone	System	Channel	System	Channel
Command	166.6125	168.4000	136.5	NIFC C4	1		
Tactical Div/Group	166.5500	166.5500		R5 T4	10		
Logistics							
Air to Ground	169.1500	169.1500		A/G CMD	13		

Prepared by (Resource Unit Leader) G. Thompson / J. Switzler / Eric Mayte (t)	Approved by (Planning Section Chief) Dennis Cooper / Jason Schillinger (t)	Date Prepared 09/20/14	Time Prepared 1405
--	---	---------------------------	-----------------------



<b>Division Assignment List</b>	1. Branch <b>XVI</b>	2. Division/Group <b>1 R</b>
---------------------------------	-------------------------	---------------------------------

3. Incident Name <b>KING - ZONE 1</b>	4. Operational Period <b>09/21/14 Sunday Day Shift 0600 - 1800</b>
--	---

5. Operations Personnel			
Operations Chief	LES CURTIS / STEVE BURNS (t)	Division/Group Supervisor	UNSTAFFED
Operations Chief		Air Attack Supervisor	
Branch Director	DON FORSYTH	Safety Officer	M. HAMEL; S. RYBERG; C. JORDAN

6. Resources Assigned this Period					
Strike Team/Task Force/ Resource Designator	Leader	Num of Pers.	Trans. Y/N	Drop Off PT./Time	Pick Up PT./Time
UNSTAFFED					

7. Control Operations  
UNSTAFFED

8. Special Instructions  
All resouces report to Foresthill Mill ICP after your shift.

All DIVS need to download information to the Sit Unit for all completed line and proposed line.

Noxious weeds are marked by orange "noxious weed" flagging. Minimize or avoid activities in these areas.  
Sensitive areas are marked with pink/black checkerboard flagging. Minimize ground disturbing activities in these areas.

\* Indicates a 24 hour resource 0600-0600

9. Division/Group Communications Summary							
Function	Frequency - RX	Frequency - TX	Tone	System	Channel	System	Channel
Command	166.6125	168.4000	136.5	NIFC C4	1		
Tactical Div/Group	167.1125	167.1125		R5 T5	11		
Logistics							
Air to Ground	169.1500	169.1500		A/G CMD	13		

Prepared by (Resource Unit Leader) G. Thompson / J. Switzler / E. Matye (t)	Approved by (Planning Section Chief) Dennis Cooper / Jason Schillinger (t)	Date Prepared 09/20/14	Time Prepared 2248
--	---	---------------------------	-----------------------

<b>Division Assignment List</b>	1. Branch <b>XVI</b>	2. Division/Group <b>1 T</b>
---------------------------------	-------------------------	---------------------------------

3. Incident Name <b>KING - ZONE 1</b>	4. Operational Period <b>09/21/14 Sunday Day Shift 0600 - 1800</b>
--	---

5. Operations Personnel			
Operations Chief	LES CURTIS; STEVE BURNS (t)	Division/Group Supervisor	UNSTAFFED
Operations Chief		Air Attack Supervisor	
Branch Director	DON FORSYTH	Safety Officer	M. HAMEL; S. RYBERG; C. JORDAN

6. Resources Assigned this Period					
Strike Team/Task Force/ Resource Designator	Leader	Num of Pers.	Trans. Y/N	Drop Off PT./Time	Pick Up PT./Time
UNSTAFFED					

7. Control Operations  
UNSTAFFED

8. Special Instructions  
All resouces report to Foresthill Mill ICP after your shift.  
  
All DIVS need to download information to the Sit Unit for all completed line and proposed line.  
  
Noxious weeds are marked by orange "noxious weed" flagging. Minimize or avoid activities in these areas.  
Sensitive areas are marked with pink/black checkerboard flagging. Minimize ground disturbing activities in these areas.  
  
\* Indicates a 24 hour resource 0600-0600

9. Division/Group Communications Summary							
Function	Frequency - RX	Frequency - TX	Tone	System	Channel	System	Channel
Command	166.6125	168.4000	136.5	NIFC C4	1		
Tactical Div/Group	168.2375	168.2375		R5 T6	12		
Logistics							
Air to Ground	169.1500	169.1500		A/G CMD	13		
Prepared by (Resource Unit Leader) G. Thompson / J. Switzler / Eric Mayte (t)		Approved by (Planning Section Chief) Dennis Cooper / Jason Schillinger (t)			Date Prepared 09/20/14		Time Prepared 2250

<b>Division Assignment List</b>	1. Branch <b>XVI</b>	2. Division/Group <b>1 W</b>
---------------------------------	-------------------------	---------------------------------

3. Incident Name <b>KING - ZONE 1</b>	4. Operational Period 09/21/14 Sunday Day Shift 0600 - 1800
--	--

5. Operations Personnel			
Operations Chief	LES CURTIS; STEVE BURNS (t)	Division/Group Supervisor	COREY ROSE
Deputy Operations Chief		Air Attack Supervisor	
Branch Director	DON FORSYTH	Safety Officer	M HAMEL; S. RYBERG; C. JORDAN

6. Resources Assigned this Period						
Strike Team/Task Force/ Resource Designator	Leader	Num of Pers.	Trans. Y/N	Drop Off PT./Time	Pick Up PT./Time	
CRW T1 PAYSON IHC C-147 9/24	MICHAEL SCHINSTOCK	16	N	0600	1800	
CRW T1 CEDAR CITY IHC C-8 9/26	BRIAN BURBRIDGE	19	N	0600	1800	
CRW T1 SAWTOOTH IHC C-89 9/27	MICHAEL KRUPSKI	20	N	0600	1800	
CRW T1 IDAHO CITY IHC C-88 9/25	RALPH RANDALL LAMB	22	N	0600	1800	
CRW T2IA RED ROCK C-39 9/28	BRANDON JOHNSON	19	N	0600	1800	
CRW T2IA NMCIF ACOMA #1 C-131	ANDREW M HENRY	20	N	0600	1800	
T/F ENF KING #3		1	N	0600	1800	
TFLD O-339	BRIAN MULHOLLEN	1	N	0600	1800	
ENG T6 E-380 10/1	DREW MAXWELL	2	N	0600	1800	
ENG6 CO MVP E-360 10/1		3	N	0600	1800	
ENG T6 #3629 E-376 10/1	TRAVIS MOORE	3	N	0600	1800	
ENG T6 ARF #671 E-365 10/2	NICHOLAS FETSCH	3	N	0600	1800	
ENG T6 CO-WRF E-373 10/1	TODD KING	4	N	0600	1800	
ENG T6 #603 E-371 10/2	MICHAEL OTTOSEN	5	N	0600	1800	
ENG T6 # 631 E-377 10/1	WILLIAM HALL	3	N	0600	1800	
DOZ T2 NORTHSTATE E-110* 10/1	GIFFORD TALMADGE	2	N	0600	1800	
DOZ T2 NORTHSTATE E-120* 10/1	GEORGE POE	2	N	0600	1800	
DOZ T2 NORTHSTATE E-122* 10/1	MIKE BRASK	3	N	0600	1800	
DOZ T2 BIG EDS CRANE E-210* 9/29	RICK ROGER	3	N	0600	1800	
WT T1 ALL AGENCY E-253* 9/29	DOUG HILL	2	N	0600	1800	

7. Control Operations  
Construct indirect line from the Division 1T/1W break to the Hell Hole Reservoir.

8. Special Instructions  
All resources report to Foresthill Mill ICP after your shift.  
All DIVS need to download information to the Sit Unit for all completed line and proposed line.  
Identify resources to respond for initial attack. Noxious weeds are marked by orange "noxious weed" flagging. Minimize or avoid activities in these areas.  
Sensitive areas are marked with pink/black checkerboard flagging. Minimize ground disturbing activities in these areas.  
\* Indicates a 24 hour resource 0600-0600

9. Division/Group Communications Summary							
Function	Frequency - RX	Frequency - TX	Tone	System	Channel	System	Channel
Command	166.6125	168.4000	136.5	NIFC C4	1		
Tactical Div/Group	168.2375	168.2375		R5 T6	12		
Logistics							
Air to Ground	169.1500	169.1500		A/G CMD	13		
Prepared by (Resource Unit Leader) G. Thompson / J. Switzler / E. Mayte (t)		Approved by (Planning Section Chief) Dennis Cooper / Jason Schillinger (t)		Date Prepared 09/20/14		Time Prepared 1405	

<b>Division Assignment List</b>	1. Branch <b>XVI</b>	2. Division/Group <b>1 W</b>
---------------------------------	-------------------------	---------------------------------

3. Incident Name <b>KING - ZONE 1</b>	4. Operational Period <b>09/21/14 Sunday Day Shift 0600 - 1800</b>
--	---

5. Operations Personnel			
Operations Chief	<b>LES CURTIS; STEVE BURNS (t)</b>	Division/Group Supervisor	<b>COREY ROSE</b>
Deputy Operations Chief		Air Attack Supervisor	
Branch Director	<b>DON FORSYTH</b>	Safety Officer	<b>M HAMEL; S. RYBERG; C. JORDAN</b>

6. Resources Assigned this Period					
Strike Team/Task Force/ Resource Designator	Leader	Num of Pers.	Trans. Y/N	Drop Off PT./Time	Pick Up PT./Time
WT T1 TACTICAL E-142 10/2	DOUG ROGERS	2	N	0600	1800
WT T1 TACTICAL E-138 10/2	ZACHARY WITTERS	2	N	0600	1800
WT T1 E-139 10/2	ROBERT THORPE	4	N	0600	1800
FOBS O-452 10/1	ROB BOZEMAN	1	N	0600	1800
FOBS O-449 10/1	SHAWN EGGLESTON	1	N	0600	1800

7. Control Operations  
Construct indirect line from the Division 1T/1W break to the Hell Hole Reservoir.

8. Special Instructions  
All resources report to Foresthill Mill ICP after your shift.  
  
All DIVS need to download information to the Sit Unit for all completed line and proposed line.  
  
Identify resources to respond for initial attack. Noxious weeds are marked by orange "noxious weed" flagging. Minimize or avoid activities in these areas.  
Sensitive areas are marked with pink/black checkerboard flagging. Minimize ground disturbing activities in these areas.  
  
\* Indicates a 24 hour resource 0600-0600

9. Division/Group Communications Summary							
Function	Frequency - RX	Frequency - TX	Tone	System	Channel	System	Channel
Command	166.6125	168.4000	136.5	NIFC C4	1		
Tactical Div/Group	168.2375	168.2375		R5 T6	12		
Logistics							
Air to Ground	169.1500	169.1500		A/G CMD	13		
Prepared by (Resource Unit Leader) G. Thompson/ J. Switzler/ E. Mayte (t)		Approved by (Planning Section Chief) Dennis Cooper / Jason Schillinger (t)		Date Prepared 09/20/14		Time Prepared 1405	

<b>Division Assignment List</b>		1. Branch <b>XVI</b>		2. Division/Group <b>1 Y</b>			
3. Incident Name <b>KING - ZONE 1</b>		4. Operational Period <b>09/21/14 Sunday Day Shift 0600 - 1800</b>					
5. Operations Personnel							
Operations Chief	LES CURTIS; STEVE BURNS (t)		Division/Group Supervisor	M. CHERRY; D. SOLDAVINI (t)			
Deputy Operations Chief			Air Attack Supervisor				
Branch Director	DON FORSYTH		Safety Officer	M. HAMEL; S. RYBERG; C. JORDAN			
6. Resources Assigned this Period							
Strike Team/Task Force/ Resource Designator	Leader	Num of Pers.	Trans. Y/N	Drop Off PT./Time	Pick Up PT./Time		
CRW T1 LONE PEAK IHC C-149 9/27	KRIS BRUINGTON	23	N	0600	1800		
CRW T1 BLUE RIDGE IHC C-148 9/24	BRIAN FRISBY	21	N	0600	1800		
CRW T2IA AOICC INTER C-10 9/30	TIM DEATON	20	N	0600	1800		
CRW T2 BEAR JAW C-9 9/30	JD OTTMAN	20	N	0600	1800		
ENG S/T XTB 4228C E-168 9/29	JON ANDERSON	19	N	0600	1800		
ENG S/T XCO 3025C E-189 9/29	REX MAYES	17	N	0600	1800		
DOZ T2 SHF 79 E-112 9/30	JASON SHURRAH	3	N	0600	1800		
DOZ2 T2 (CA-PNF) E-144 9/29	SCOTT SIBBALD	3	N	0600	1800		
DOZ2 T2 (CA-PNF) E-145 9/29	ANDREW SHEPHERD	2	N	0600	1800		
DOZ T2 CASHF 29 E-146 9/29	DAVID BROWN	2	N	0600	1800		
WT T3 AWB INC E-13 9/28	DAB BRADY	1	N	0600	1800		
WT T1 TACTICAL E-128 9/30	ALAN WEST	2	N	0600	1800		
WT T1 E-258* 9/29	RICHARD YOST	2	N	0600	1800		
WT T1 EMERSON ASSOC. E-51* 9/28	MEL EMERSON	2	N	0600	1800		
WT T1 ARBOR TREE E-263* 9/29	LU ESTRADA	2	N	0600	1800		
WT T2 49ER E-3* 9/28	BOB ALVAREZ	2	N	0600	1800		
HEQB O-259 10/1	CHRIS J COLT	1	N	0600	1800		
HEQB O-241 9/30	TRAVIS ORANGE	1	N	0600	1800		
HEQB O-257 9/30	MATTHEW KILGRIFF	1	N	0600	1800		
CHIP BURKE E-439	TIM BURKE	1	N	0600	1800		
7. Control Operations							
Construct direct and indirect line from the Division 1W/1Y break to the Zone 1/ Zone 2 break.							
8. Special Instructions							
All resources report to Foresthill Mill ICP after your shift.							
All DIVS need to download information to the Sit Unit for all completed line and proposed line.							
Identify resources to respond for initial attack. Noxious weeds are marked by orange "noxious weed" flagging. Minimize or avoid activities in these areas.							
Sensitive areas are marked with pink/black checkerboard flagging. Minimize ground disturbing activities in these areas.							
* Indicates a 24 hour resource 0600-0600							
9. Division/Group Communications Summary							
Function	Frequency - RX	Frequency - TX	Tone	System	Channel	System	Channel
Command	166.6125	168.4000	136.5	NIFC C4	1		
Tactical Div/Group	168.2375	168.2375		R5 T6	12		
Logistics							
Air to Ground	169.1500	169.1500		A/G CMD	13		
Prepared by (Resource Unit Leader) G. Thompson / J. Switzler / Eric Mayte (t)		Approved by (Planning Section Chief) Dennis Cooper / Jason Schillinger (t)		Date Prepared 09/20/14		Time Prepared 2308	

<b>Division Assignment List</b>			1. Branch <b>XVI</b>	2. Division/Group <b>1 Y</b>		
---------------------------------	--	--	-------------------------	---------------------------------	--	--

3. Incident Name <b>KING - ZONE 1</b>			4. Operational Period <b>09/21/14 Sunday Day Shift 0600 - 1800</b>			
--	--	--	---	--	--	--

5. Operations Personnel					
Operations Chief	LES CURTIS; STEVE BURNS (t)		Division/Group Supervisor	M CHERRY; D SOLDAVINI (t)	
Deputy Operations Chief			Air Attack Supervisor		
Branch Director	DON FORSYTH		Safety Officer	M. HAMEL; S. RYBERG; C. JORDAN	

6. Resources Assigned this Period					
Strike Team/Task Force/ Resource Designator	Leader	Num of Pers.	Trans. Y/N	Drop Off PT./Time	Pick Up PT./Time
CHIP FIRESTORM E-438	GIDEON MACOMBER	2	N	0600	1800
CHIP SKYLINE E-471		2	N	0600	1800
CHIP DIAMOND E-472		2	N	0600	1800
DIVS	SHANNON MYERS	1	N	0600	1800
DIVS	JUSTIN HANLEY	1	N	0600	1800

**7. Control Operations**  
Construct direct and indirect line from the Division 1W/1Y break to the Zone 1/ Zone 2 break.

**8. Special Instructions**  
All resources report to Foresthill Mill ICP after your shift.  
  
All DIVS need to download information to the Sit Unit for all completed line and proposed line.  
  
Identify resources to respond for initial attack. Noxious weeds are marked by orange "noxious weed" flagging. Minimize or avoid activities in these areas.  
Sensitive areas are marked with pink/black checkerboard flagging. Minimize ground disturbing activities in these areas.  
  
\* Indicates a 24 hour resource 0600-0600

9. Division/Group Communications Summary							
Function	Frequency - RX	Frequency - TX	Tone	System	Channel	System	Channel
Command	166.6125	168.4000	136.5	NIFC C4	1		
Tactical Div/Group	168.2375	168.2375		R5 T6	12		
Logistics							
Air to Ground	169.1500	169.1500		A/G CMD	13		
Prepared by (Resource Unit Leader) G. Thompson / J. Switzler / E. Mayte (t)			Approved by (Planning Section Chief) Dennis Cooper / Jason Schillinger (t)		Date Prepared 09/20/14	Time Prepared 1723	

# AIR OPERATIONS SUMMARY

(Expanded Form for Large Operations)

OPERATIONAL PERIOD DATE: DAY SHIFT DATE: 09/21/2014

START: 0700 END: 2000

<b>1. INCIDENT NAME:</b> King	<b>2. PREPARED BY:</b> John Keesee <i>JK</i>	<b>3. Prepared</b> 09/20/14 1930 hrs
<b>4. REMARKS (Safety Notes, Hazards, Air Operations Special Equipment, etc.):</b> STEEP SMOKEY CONDITIONS, OTHER FIRES, OTHER AIRCRAFT COULD FLY IN OUR AREA		
All GPS data to be collected (degrees, minutes & decimal minutes) **Avoid aerial application of retardant or foam within 300' of waterways, bodies of water. If retardant is dropped within these areas, <u>notify</u> AOBDD with Lat & Long, est. of gallons, and a map. FAA tower in place at Placerville airport. Incident aircraft will support initial attack within and adjacent to the TFR.		
<b>TRACK RETARDANT DROP LOCATIONS</b>		
SUNRISE: 0650 SUNSET : 1903 5. TFR: 4/7646 Altitude : 10,500' MSL Freq. 118.6250 See TFR map		

6. PERSONNEL	Phone	FREQUENCIES	AM	FM	8. FIXED-WING # Avail / Type/ Make-Model / FAA N# / Base(s)
AOBD: John Keesee (zone 1)	805-551-6422	AIR/AIR FW:	118.6250	166.6750	Air Tactical: AA 17 AA 112
AOBD: Frank Podesta (zone 2)	209-419-4408	AIR/AIR RW:	135.7250		
ASGS: Craig Dado (zone 1)	530-518-6688	A/G Command:		169.1500	
ASGS: Jon Chin (zone 2)	760-250-6230	A/G Tactical:		167.9500	
HLCO: Lane Caldwell	530-310-2211	DECK:	163.100		Lead planes:
HLCO: Doug Ross	951-663-9740	COMMAND:	TX	RX	Airtankers:
ATGS: Jason Withrow	530-206-6955	AIR GUARD:	168.625	Tone Tx 110.9	On order
ATGS: Todd White	530-263-5621	TOWER:	119.100		Other: Camino Dispatch 530-647-5220
HEBM: Travis Taylor (T)	208-241-0399				
HEBM: Dave Ito	530-391-6583				
Cobra: Stan Kubota	530-949-9466				
Grass Valley ATB	530-272-4952				
McClellan ATB	530-391-7514				

## 9. HELICOPTERS (Use Additional Sheets As Necessary)

FAA N#	TY	MAKE/MODEL	BASE	AVAIL	START	REMARKS	FAA N#	TY	MAKE/MODEL	BASE	AVAIL	START	REMARKS
301	3	BELL 206	PVF	0800	0700	Recon/Helco	510	2	Bell 210	PVF	0800	0700	Bucket/Shuttle
54E	3	AS 350	PVF	0800	0700	Recon/Helco	507	2	Cobra	PVF	0800	0700	Air Attack/Helco
67H	3	Bell 206	PVF	0800	0700	Recon/Helco	408	2	Bell 205	GOO	0800	0700	Medevac/Hoist
7AC	3	Bell 407	PVF	0800	0700	IR/Mapping	HT 781	1	Skycrane	PVF	0800	0700	Tanked
104	2	Bell 205	PVF	0800	0700	Bucket/Shuttle/Hoist	HT 783	1	Skycrane	PVF	0800	0700	Tanked
5DY	2	Bell 205	PVF	0800	0700	Bucket/Shuttle	HT 746	1	Skycrane	PVF	0800	0700	Tanked
7HX	2	Bell 205	PVF	0800	0700	Bucket/Shuttle	HT 734	1	Skycrane	GOO	0800	0700	Tanked
516	2	Bell 212	PVF	0800	0700	Bucket/Shuttle	3CK	1	S-61	PVF	0800	0700	Bucket
212AH	2	Bell 212	PVF	0800	0700	Bucket/Shuttle	43T	1	S-61	GOO	0800	0700	Bucket
2TH	2	Bell 212	PVF	0800	0700	Bucket/Shuttle							

# **SAFETY MESSAGE**

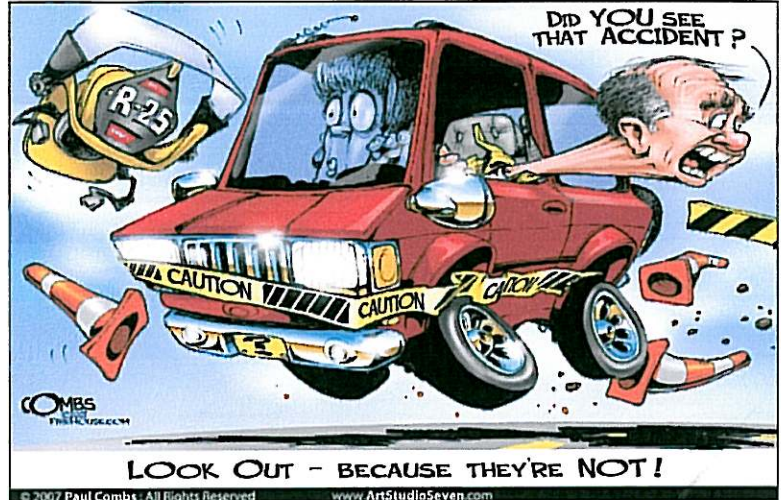
**KING FIRE (ZONE 1)**

**CA-ENF-023461**

**DAY SHIFT 09/21/2014 0600-1800**

## **Driving**

- ✓ Be aware of other drivers when working along roadways – They may not see you! Use warning devices and flaggers if necessary
- ✓ Seat Belts are mandatory
- ✓ Maintain safe speeds and following distances at all times.
- ✓ Ensure vehicle meets allowable height or weight requirements of roads, bridges and under crossings.



## **Fuels, Fire Behavior and Weather**

- ✓ Fuel moistures are near or at record lows – Potential for rapid fire growth and erratic fire behavior is still present
- ✓ **Potential for rapid fire growth exists – Know your LCES mitigations, Communicate with crews and adjoining forces.**
- ✓ **Hazard Trees** exist throughout the majority of the incident – Identify and Flag - Utilize qualified fallers – Work only within prescribed parameters! Refer to **IRPG pg. 22-23**
- ✓ Potential for Thunderstorms is in the forecast – Review **Thunderstorm Safety on Page 21 of the IRPG**

## **Hydration, Nutrition, Hygiene and Fatigue**

- ✓ As personnel work more and more shifts on the line and the weather becomes warmer – Dehydration can accumulate and sneak up on you. Make sure you are staying hydrated. Minimum of ONE QUART per HOUR per person. Plan accordingly.
- ✓ Use the wash stations, the "camp crud" could be just around the corner.
- ✓ Monitor Personnel for Fatigue - Consider decreasing intervals for breaks or Increasing time – "This is a marathon; NOT a sprint!"

## **Footing and Rolling Material**

- ✓ There is a significant amount of steep and unstable terrain – watch your footing and be aware of rolling material!
  - ✓ Mine shafts are throughout the fire area, flag and make known when they are found.
- Prepared by Steve Ryberg – SOF1      Approved by Marty Hamel – SOF1, Cal IMT5

Lookouts

Communications

Escape Routes

Safety Zones



INCIDENT RADIO COMMUNICATIONS PLAN		Incident Name KING, CA-ENF-023461 - ZONE 1				BK RADIO GROUP GROUP 14			Operational Period Date/Time 9/21/14 DAY		
Ch #	Function	Channel Name/Trunked Radio System Talkgroup	Assignment	RX Freq	N or W	RX Tone/NAC	TX Freq	N or W	Tx Tone/NAC	Mode A, D or M	Remarks
1	COMMAND	NIFC C4	All Divisions	166.6125	N	136.5	168.4000	N	136.5	A	TONE 4 - LINKED RPTR
2	COMMAND	NIFC C11	All Divisions	170.6875	N	136.5	166.5750	N	136.5	A	TONE 4 - LINKED RPTR
3	COMMAND	NIFC C12	ZONE 2 CMD	173.0375	N	146.2	167.3250	N	146.2	A	TONE 5 - ZONE 2 CMD
4	COMMAND	NIFC C5	ZONE 2 CMD	167.1000	N	146.2	169.7500	N	146.2	A	TONE 5 - ZONE 2 CMD
5	TACTICAL	NIFC T1	DIV 1B	168.0500	N		168.0500	N		A	
6	TACTICAL	NIFC T2	DIV 1D	168.2000	N		168.2000	N		A	
7	TACTICAL	NIFC T5	DIV 1F	166.7250	N		166.7250	N		A	
8	TACTICAL	NIFC T6	DIV 1H	166.7750	N		166.7750	N		A	
9	TACTICAL	NIFC T7	DIV 1K	168.2500	N		168.2500	N		A	
10	TACTICAL	R5 T4	DIV 1M/1P	166.5500	N		166.5500	N		A	
11	TACTICAL	R5 T5	DIV 1R	167.1125	N		167.1125	N		A	
12	TACTICAL	R5 T6	DIV 1T/1W/1Y	168.2375	N		168.2375	N		A	
13	AIR TO GROUND	A/G CMD	ALL DIVISIONS	169.1500	N		169.1500	N		A	A/G COMMAND
14	AIR TO GROUND	A/G TAC	ALL DIVISIONS	167.9500	N		167.9500	N		A	A/G TACTICAL
15	MEDICAL	CALCORD	ALL DIVISIONS	156.0750	N		156.0750	N	156.7	A	MEDICAL COORDINATION
16	EMERGENCY ONLY	Guard	ALL DIVISIONS	168.6250	N		168.6250	N	110.9	A	AIR GUARD - EMERGENCY
17										A	
18										A	
19										A	
20	EMERGENCY ONLY	Guard	ALL DIVISIONS	168.6250	N		168.6250	N	110.9	A	AIR GUARD - EMERGENCY

Prepared By (Communications Unit)

KEN PARKER, COM1 *[Signature]*

Incident Location: Placerville, CA  
 County: El Dorado State: CA  
 Latitude 38°46.55' N, Longitude 120° 36.12' W

The convention calls for frequency lists to show four digits after the decimal place, followed by either an "N" or a "W", depending on whether the frequency is narrow or wide band. Mode refers to either "A" or "D" indicating analog or digital (e.g. Project 25) or "M" indicating mixed mode. All channels are shown as if programmed in a control station, mobile or portable radio. Repeater and base stations must be programmed with the Rx and Tx reversed.

INCIDENT RADIO COMMUNICATIONS PLAN		Incident Name KING, CA-ENF-023461 - ZONE 2				BK RADIO GROUP GROUP 15			Operational Period Date/Time 9/21/14 0700 hrs - 9/22/14 0700 hrs		
Ch #	Function	Channel Name/Trunked Radio System Talkgroup	Assignment	RX Freq	N or W	RX Tone/NAC	TX Freq	N or W	Tx Tone/NAC	Mode A, D or M	Remarks
1	COMMAND	NIFC C5	ALL DIVISIONS	167.1000	N	146.2	169.7500	N	146.2	A	TONE 5 - BALD MT. - LINKED
2	COMMAND	NIFC C12	ALL DIVISIONS	173.0375	N	146.2	167.3250	N	146.2	A	TONE 5 - BIG MT. - LINKED
3	COMMAND	NIFC C37	ALL DIVISIONS	172.5500	N	146.2	162.1875	N	146.2	A	TONE 5 - UNION HILL- LINKED
4											
5	COMMAND	NIFC C4	ZONE 1 CMD	166.6125	N	136.5	168.4000	N	136.5	A	TONE 4 - ZONE 1 CMD ONLY
6	TACTICAL	VFIRE 24	AA/BB/CC/DD	154.2725	N	156.7	154.2725	N	156.7	A	
7	TACTICAL	VFIRE 25	DIV A/U	154.2875	N	156.7	154.2875	N	156.7	A	
8	TACTICAL	VFIRE 26	DIV D/T	154.3025	N	156.7	154.3025	N	156.7	A	
9	TACTICAL	VTAC 11	DIV E/W	151.1375	N	156.7	151.1375	N	156.7	A	
10	TACTICAL	VTAC 12	DIV G/Y	154.4525	N	156.7	154.4525	N	156.7	A	
11	TACTICAL	VTAC 13	FIRING GRP	158.7375	N	156.7	158.7375	N	156.7	A	
12	TACTICAL	VTAC 14	ROAD GRP	159.4725	N	156.7	159.4725	N	156.7	A	
13	AIR TO GROUND	A/G CMD	ALL DIVISIONS	169.1500	N		169.1500	N		A	A/G COMMAND
14	AIR TO GROUND	A/G TAC	ALL DIVISIONS	167.9500	N		167.9500	N		A	A/G TACTICAL
15	MEDICAL	CALCORD	ALL DIVISIONS	156.0750	N		156.0750	N	156.7	A	MEDICAL COORDINATION
16	EMERGENCY ONLY	GUARD	ALL DIVISIONS	168.6250	N		168.6250	N	110.9	A	AIR GUARD - EMERGENCY
17										A	
18										A	
19										A	
20	EMERGENCY ONLY	GUARD	ALL DIVISIONS	168.6250	N		168.6250	N	110.9	A	AIR GUARD - EMERGENCY

Prepared By (Communications Unit)

Ken Parker, COML CAL FIRE IMT5 *RP*

Incident Location: Placerville, CA  
 County: El Dorado State: CA  
 Latitude Longitude N Longitude W

The convention calls for frequency lists to show four digits after the decimal place, followed by either an "N" or a "W", depending on whether the frequency is narrow or wide band. Mode refers to either "A" or "D" indicating analog or digital (e.g. Project 25) or "M" indicating mixed mode. All channels are shown as if programmed in a control station, mobile or portable radio. Repeater and base stations must be programmed with the Rx and Tx reversed.

# MEDICAL PLAN

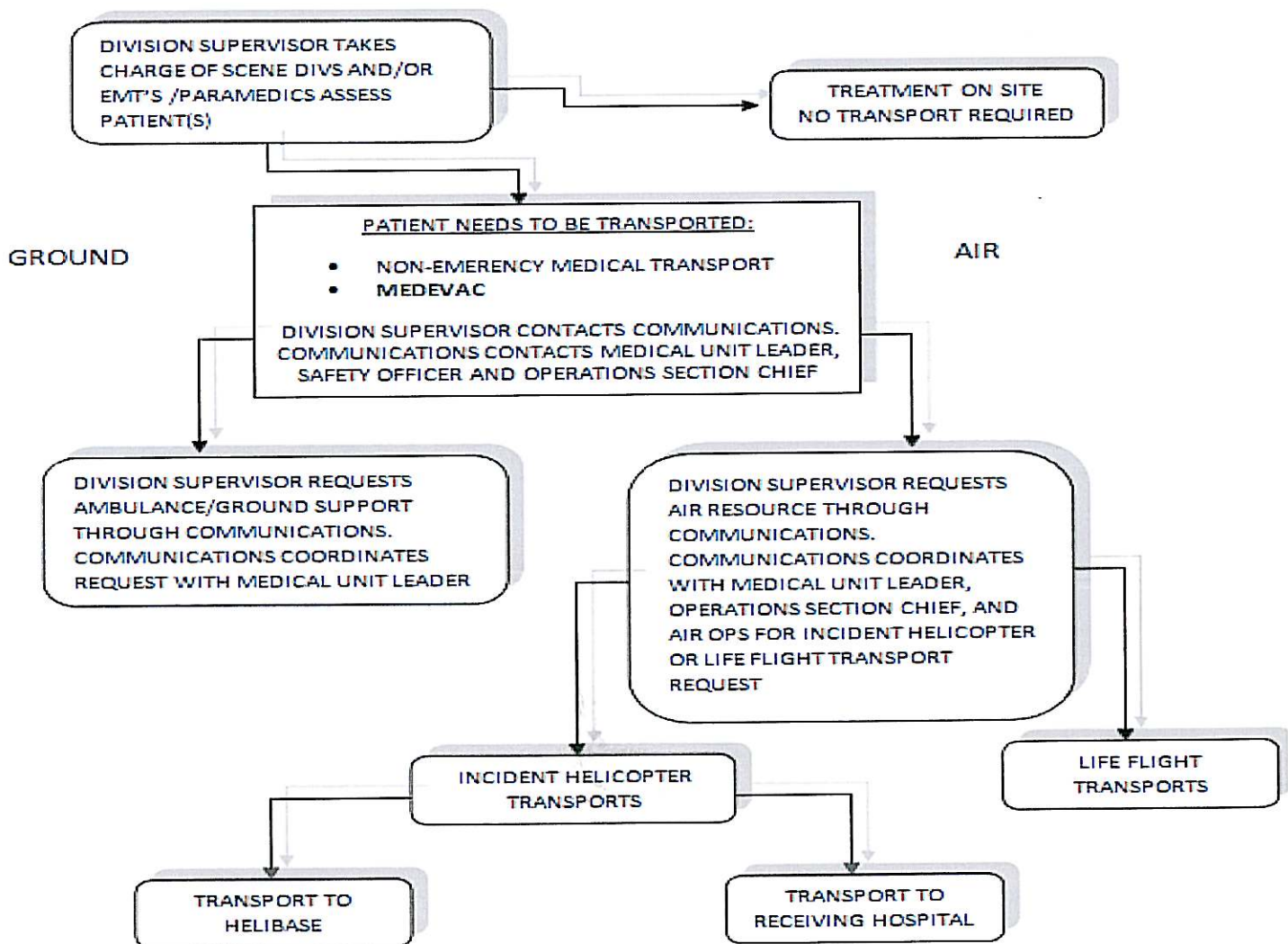
<b>1. Incident/Project Name</b>				<b>2. Operational Period</b>			
<b>King Fire</b>				Date/Time <b>9/21/2014 0600-1800</b> <b>Zone 1 (NORTH)</b>			
<b>2. Aid Station</b>							
Name	Complete Address	Phone & EMS Frequency	Advanced Life Support (ALS) Yes                      No				
King ICP Zone 1	Foresthill Old Mill Site 23850 Foresthill Rd., Foresthill, CA 95631		None	XX			
<b>3. Ambulance Services</b>							
Name	Complete Address	Phone & EMS Frequency	Advanced Life Support (ALS) Yes                      No				
Eldorado County Emergency Medical Services Medic 248	Eldorado County Fire Station 17 6426 Pony Express Trail Pollock Pines, CA	911 or 530-647-5220	XX				
Eldorado County Emergency Medical Services Medic 289 0700-1900	Georgetown FPD Station 61 6281 Main ST, Georgetown, CA 95634	911 or 530-647-5220	XX				
Foresthill Fire Department Medic 89	Foresthill FPD FS 88 5981 Gold St. Foresthill, CA	911 or 530-886-5375	XX				
<b>4. Air Ambulance Services</b>							
Name	Phone	Type of Aircraft & Capability					
CAL FIRE H-104 Placerville, CA	911 or 530-647-5220	Bell 205++ Hoist, No NVG, BLS					
Kern County (KRN) H-408 Grass Valley, CA	911 or 530-647-5220	Bell 205++ Hoist, NVG, ALS					
CHP H20 or H24 Auburn, CA	911 or 916-861-1299	Eurocopter B3 Hoist, ALS, No NVG					
CALSTAR 3 Auburn, CA	911 or 530-887-0569	BO 105LS/C-30					
CAL STAR 6 South Lake Tahoe, CA	911 or 530-887-2338	BO 105LS/C-30					
<b>5. Hospitals</b>							
Name Complete Address	GPS Datum – NAD 83 Degrees Decimal Minutes DD° MM.MMM' N - Lat DD° MM.MMM' W - Long	Travel Time Air    Gnd	Phone	Helipad Yes    No	Level of Care Facility		
Marshal Medical Center 1100 Marshall Way, Placerville, CA 95667	Lat: N/A Long: VHF: N/A	1.5 Hr	(530) 622-1441	<input type="checkbox"/> <input checked="" type="checkbox"/>	Level III Trauma Center		
Sutter Auburn Faith Hosp. 11815 Education St. Auburn, CA, 95602	Lat: N/A Long: VHF: N/A	30 Min	(530) 888-4500	<input type="checkbox"/> <input checked="" type="checkbox"/>			
Sutter Roseville Medical Center 1 Medical Plaza Dr, Roseville, CA 95661	Lat: 38 45.58 Long: 121 14.52 VHF:	25 Min    1 Hr	(916) 781-1200	<input checked="" type="checkbox"/> <input type="checkbox"/>	Level II Trauma Center		
UC Davis Medical Center 2315 Stockton Ave. Sacramento, CA 95817	Lat: 38 33.17 Long: 121 27.21 VHF:	25 Min    1 Hr	(916) 734-2363	<input checked="" type="checkbox"/> <input type="checkbox"/>	Level I Trauma Center Burn Center		
Barton Memorial Hospital 2170 South Ave. South Lake Tahoe, CA 96158	Lat: 38 54.40 Long: 119 59.48 VHF:	30 Min    2.5 Hr	(530) 541-3420	<input checked="" type="checkbox"/> <input type="checkbox"/>			
Renown Regional Medical Center 1155 Mill St Reno, NV	Lat: 39 31 32 Long: 119 47 44 VHF:	45 Min    2 Hr	(775) 982-4100	<input checked="" type="checkbox"/> <input type="checkbox"/>	Level II Trauma Center Burn Center		
<b>6. Prepared By (Medical Unit Leader)</b>							
Robert Russell MEDL		<b>7. Date/Time</b> 09/20/2014 2200		<b>8. Reviewed By (Safety Officer)</b> Marty Hamej SOF 1		<b>9. Date/Time</b> 09/20/2014 2200	

When an injury occurs, initiate care with available resources at scene and notify DIVS.

The DIVS shall coordinate the incident and direct necessary actions. The following steps shall be taken to mitigate the incident:

1. Determine the nature of the emergency.
2. If the emergency is a medical injury/illness, determine if the injury/illness is life threatening.
3. If the injury is life threatening, then clear designated frequency for emergency traffic.
4. Identify the on-scene point of contact by position.
5. Ensure that the Medical Unit Leader is contacted immediately.
6. Identify number injured, patient assessment(s) and location (geographic and/or GPS coordinates).
7. Identify on-scene medical personnel by position and last name (i.e. EMT Jones).
8. Identify preferred method of patient transport.
9. Determine any additional resources or equipment needed.

The Evacuation Plan should be continually evaluated, and contingencies developed in the event the first plan is not effective.



## Medical Incident Report

**FOR ALL MEDICAL EMERGENCIES: IDENTIFY ON SCENE INCIDENT COMMANDER BY NAME AND POSITION AND ANNOUNCE "MEDICAL EMERGENCY" TO INITIATE RESPONSE FROM IMT COMMUNICATIONS/DISPATCH.**

**Use items one through nine to communicate situation to communications/dispatch.**

**1. CONTACT COMMUNICATIONS/DISPATCH**

*Ex: "Communications, Div. Alpha. Stand-by for Priority Medical Incident Report." (If life threatening request designated frequency be cleared for emergency traffic.)*

**2. INCIDENT STATUS:** Provide incident summary and command structure.

<b>Nature of Injury/Illness</b>		<i>Describe the injury (Ex: Broken leg with bleeding)</i>
Incident Name		<i>Geographic Name + "Medical" (Ex: Trout Meadow Medical)</i>
Incident Commander		<i>Name of IC</i>
Patient Care		<i>Name of Care Provider (Ex: EMT Smith)</i>

**3. INITIAL PATIENT ASSESSMENT:** Complete this section for each patient. This is only a brief, initial assessment. Provide additional patient info after completing this 9 Line Report.

Number of Patients:	Male / Female	Age:	Weight:
Conscious? <input type="checkbox"/> YES <input type="checkbox"/> NO = MEDEVAC!			
Breathing? <input type="checkbox"/> YES <input type="checkbox"/> NO = MEDEVAC!			
Mechanism of Injury: <i>What caused the injury?</i>			
Lat/Long (Datum WGS84) <i>Ex: N 40° 42.45' x W 123° 03.24'</i>			

**4. SEVERITY OF EMERGENCY, TRANSPORT PRIORITY**

SEVERITY	TRANSPORT PRIORITY
<input type="checkbox"/> <b>URGENT-RED Life threatening injury or illness.</b> <i>Ex: Unconscious, difficulty breathing, bleeding severely, 2° – 3° burns more than 4 palm sizes, heat stroke, disoriented.</i>	Ambulance or MEDEVAC helicopter. Evacuation need is <b>IMMEDIATE.</b>
<input type="checkbox"/> <b>PRIORITY-YELLOW Serious Injury or illness.</b> <i>Ex: Significant trauma, not able to walk, 2° – 3° burns not more than 1-2 palm sizes.</i>	Ambulance or consider air transport if at remote location. Evacuation may be <b>DELAYED.</b>
<input type="checkbox"/> <b>ROUTINE-GREEN</b> Not a life threatening injury or illness. <i>Ex: Sprains, strains, minor heat-related illness.</i>	Non-Emergency. Evacuation considered <b>Routine of Convenience.</b>

**5. TRANSPORT PLAN:**

**Air Transport:** (Agency Aircraft Preferred)

<input type="checkbox"/> Helispot	<input type="checkbox"/> Short-haul/Hoist	<input type="checkbox"/> Life Flight	<input type="checkbox"/> Other
-----------------------------------	---	--------------------------------------	--------------------------------

**Ground Transport:** Click here to enter text.

<input type="checkbox"/> Self-Extract	<input type="checkbox"/> Carry-Out	<input type="checkbox"/> Ambulance	<input type="checkbox"/> Other
---------------------------------------	------------------------------------	------------------------------------	--------------------------------

**6. ADDITIONAL RESOURCE/EQUIPMENT NEEDS:**

<input type="checkbox"/> Paramedic/EMT(s)	<input type="checkbox"/> Crew(s)	<input type="checkbox"/> SKED/Backboard/C-Collar
<input type="checkbox"/> Burn Sheet(s)	<input type="checkbox"/> Oxygen	<input type="checkbox"/> Trauma Bag
<input type="checkbox"/> Medication(s)	<input type="checkbox"/> IV/Fluid(s)	<input type="checkbox"/> Cardiac Monitor/AED
<input type="checkbox"/> Other (i.e. splints, rope rescue, wheeled litter)		

**7. COMMUNICATIONS:**

Function	Channel Name/Number	Receive (Rx)	Tone/NAC *	Transmit (Tx)	Tone/NAC *
<i>Ex: Command</i>	<i>Forest Rpt, Ch. 2</i>	<i>168.3250</i>	<i>110.9</i>	<i>171.4325</i>	<i>110.9</i>
COMMAND					
AIR-TO-GRND					
TACTICAL					

\*(NAC for digital radio system)

**8. EVACUATION LOCATION:**

Lat/Long (Datum WGS84) <i>EX: N 40 42.45' x W 123 03.24'</i>	
Patient's ETA to Evacuation Location:	
Helispot/Extraction Size and Hazards:	

**9. CONTINGENCY:**

<b>Considerations:</b> If primary options fail, what actions can be implemented in conjunction with primary evacuation method? Be thinking ahead...	<b>REMEMBER:</b> Confirm ETA's of resources ordered Act according to your level of training Be Alert. Keep Calm. Think Clearly. Act Decisively.
---	---

Division - As Assigned		Area Location Capability
Branch X – DIV 1B 12 Hour (Day)	EMS Responders & Capability:	FEMP Nick Brandow, FEMT Ryan Souder
	Equipment Available on Scene:	ALS/BLS supplies
	Medical Emergency Channel:	Calcord 156.0750 Tone 6 (156.7) tx/rx
	ETA for Ambulance to Scene:	
	Air:	
	Ground:	1 hr
	Approved Helispot:	None identified
	Lat:	
	Long:	
Area Location Capability		
Branch X - DIV 1D 12 Hour (Day)	EMS Responders & Capability:	FEMP Nick Gabbard, FEMT Mitch Carney
	Equipment Available on Scene:	ALS/BLS supplies
	Medical Emergency Channel:	Calcord 156.0750 Tone 6 (156.7) tx/rx
	ETA for Ambulance to Scene:	
	Air:	
	Ground:	1 hr
	Approved Helispot:	None identified
	Lat:	
	Long:	
Area Location Capability		
Branch XII - DIV 1K 12 Hour (Day)	EMS Responders & Capability:	FEMP Matt Cobb, FEMT Ben Sebok
	Equipment Available on Scene:	ALS/BLS supplies
	Medical Emergency Channel:	Calcord 156.0750 Tone 6 (156.7) tx/rx
	ETA for Ambulance to Scene:	
	Air:	
	Ground:	1 hr
	Approved Helispot:	None identified
	Lat:	
	Long:	
Area Location Capability		
Branch XVI – DIV 1R 12 Hour (Day)	EMS Responders & Capability:	FEMP Dan Nunez, FEMT Travis Moore
	Equipment Available on Scene:	ALS/BLS supplies
	Medical Emergency Channel:	Calcord 156.0750 Tone 6 (156.7) tx/rx
	ETA for Ambulance to Scene:	
	Air:	
	Ground:	1 hr
	Approved Helispot:	None identified
	Lat:	
	Long:	
Area Location Capability		
	EMS Responders & Capability:	
	Equipment Available on Scene:	ALS/BLS supplies
	Medical Emergency Channel:	Calcord 156.0750 Tone 6 (156.7) tx/rx
	ETA for Ambulance to Scene:	
	Air:	
	Ground:	
	Approved Helispot:	None identified
	Lat:	
	Long:	



## Human Resource Message

# YOUR RIGHTS AND RESPONSIBILITIES

### Rights:

- ✦ To work in a harassment-free environment where people treat one another with dignity, equity, courtesy and respect.
- ✦ To say "no" to unwelcome advances or requests for favors.
- ✦ To file complaints or grievances through appropriate avenues.

### Responsibilities:

- ✦ To behave in a manner that treats people with dignity, equity, courtesy and respect.
- ✦ To abide by agency and incident ethics and conduct regulations.
- ✦ To report any harassment or other inappropriate behavior you observe or experience

Incident Human Resource Specialist is: Marilyn Loughrey, 925-588-6711

Location: Zone 1 ICP

# Incident Trainee / Trainer Data Worksheet

*PLEASE PRINT LEGIBLY!*

## A: Trainee Data

Trainee Name: \_\_\_\_\_ Check One:  Male  Female  
Trainee Position: \_\_\_\_\_ Order Number (E, O, C, A) \_\_\_\_--\_\_\_\_\_  
State Abr. \_\_\_\_ + 3 Letter Designator \_\_\_\_\_ Agency Type:  Federal  State  Local  
 USFS  BLM  BIA  FWS  DOD  NWS  NPS Date Assigned: \_\_\_\_--\_\_\_\_--\_\_\_\_\_  
Ordered as a trainee for the incident?  Yes  No Trainee Cell Number: \_\_\_\_\_  
Ordered as a US Forest Service PRIORITY trainee  Yes  No  OFPM  IFPM?

**Person's name and title that is responsible for tracking your qualifications:  
(Where do you want the packet mailed to?)**

Name: \_\_\_\_\_ Title: \_\_\_\_\_ Home Unit: \_\_\_\_\_  
Agency Address: \_\_\_\_\_ City: \_\_\_\_\_  
State: \_\_\_\_\_ Zip: \_\_\_\_\_ Phone Number: ( ) \_\_\_\_--\_\_\_\_

## B. Trainee Prerequisites

	YES	NO
1. Possesses valid Red Card or agency certification card?	<input type="radio"/>	<input type="radio"/>
2. Trainee has a proper agency initiated position task book?	<input type="radio"/>	<input type="radio"/>
3. Trainee has an <b>incident supplied</b> task book?	<input type="radio"/>	<input type="radio"/>

## C. Trainer/Evaluator Data (All fields are required to be filled in)

Trainer/Evaluator Name: \_\_\_\_\_ Position: \_\_\_\_\_  
Home Unit: \_\_\_\_\_ Order Number (E, O, C, A) \_\_\_\_--\_\_\_\_\_  
Work Address: \_\_\_\_\_ City: \_\_\_\_\_ State: \_\_\_\_\_  
Zip Code: \_\_\_\_\_ Phone Number: ( ) \_\_\_\_--\_\_\_\_

## D. Trainee Goals (items in the position task book to be evaluated on this incident)

1. \_\_\_\_\_  
2. \_\_\_\_\_  
3. \_\_\_\_\_



**IMT-5 FINANCE MESSAGE**  
***KING FIRE INCIDENT***  
***CA-ENF-023461***

**PERSONNEL TIME**

**Don't wait! ...make sure to stop by the Time Unit and update or complete your eFC-33 and CTR's. Local Government Resources check in with OES to start your F-42 Paperwork.**

**ALL HIRED EQUIPMENT**

**The "Shift Tickets" for hired equipment need to be signed and turned in to Equipment Time by Line Supervisors. *Also, make sure the evaluations are completed on the CAL FIRE-297 shift ticket.***

**PROPERTY DAMAGE or INJURIES**

**Report any property damage caused by suppression activities and/or injuries to the COMP/CLAIMS Unit Leader.**

**WATER USAGE PLAN**

**Please review the incident "Water Management Plan" in the IAP. *When applicable, please complete the Water Usage Report and turn it into the Finance Section at the end of the day.***

**COST APPORTIONMENT**

**Division Supervisors MUST check in with Cost Apportionment after each "Operational Period". Be prepared to verify assigned resources and to report work activities, which occurred during the work shift.**

**PERSONNEL ACCOMMODATIONS**

**All motel accommodations must be tracked and approved through the Motel Unit. *The Motel Unit is located next to Communications.***

**OFF-SITE FEEDING**

**No "off-site feeding" without prior approval from IC and Finance Section Chief.**

***STEVE HAWKS and TERESA FORK***  
***FINANCE SECTION CHIEFS***





UNIT LOG	1. Incident Name	2. Date Prepared	3. Time Prepared
4. Unit Name/Designators	5. Unit Leader (Name and Position)		6. Operational Period
7. Personnel Roster Assigned			
Name	ICS Position		Home Base
8. Activity Log			
Time	Major Events		
9. Prepared by (Name and Position)			