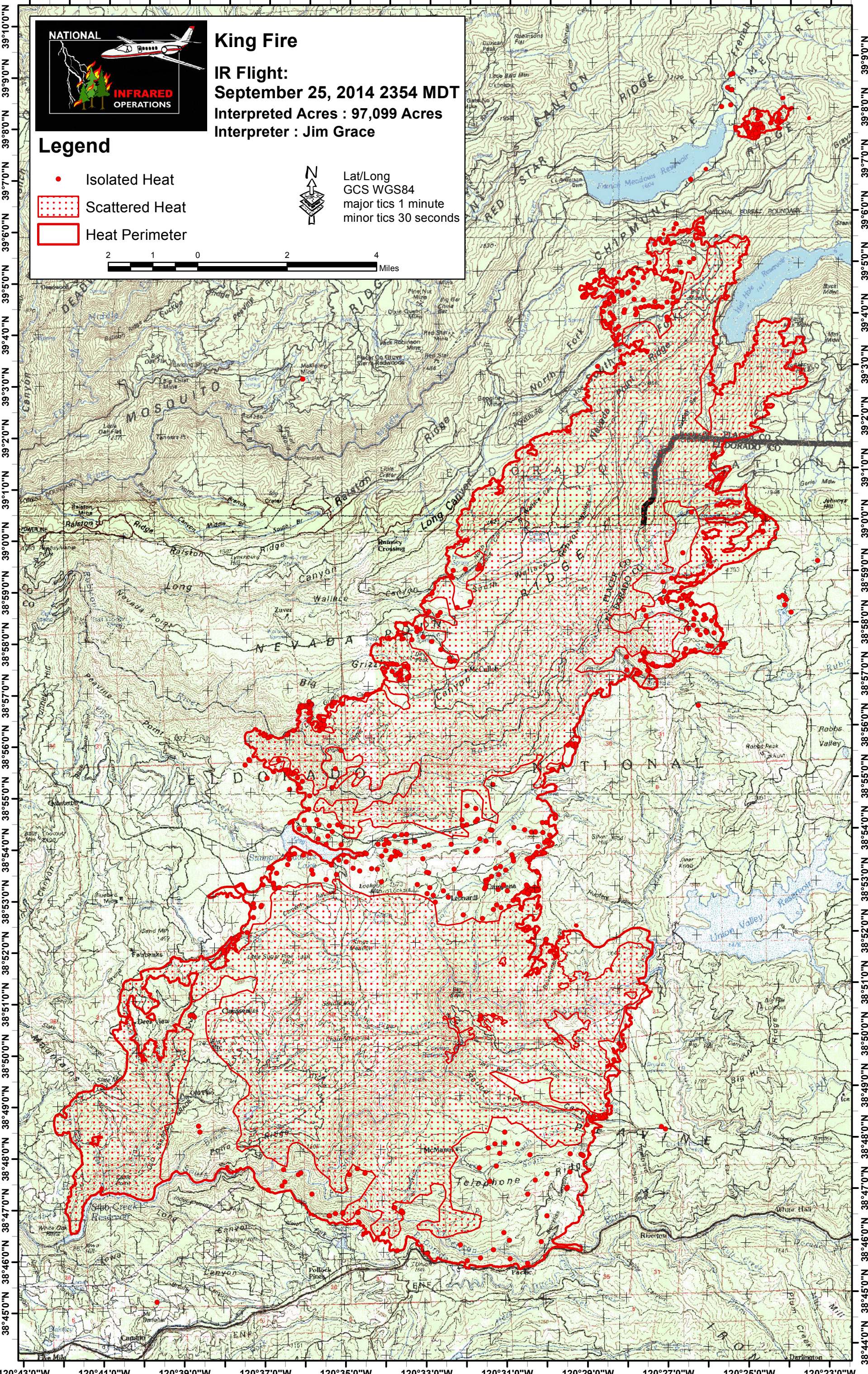


120°42'0"W 120°40'0"W 120°38'0"W 120°36'0"W 120°34'0"W 120°32'0"W 120°30'0"W 120°28'0"W 120°26'0"W 120°24'0"W 120°22'0"W



King Fire
IR Flight:
September 25, 2014 2354 MDT
Interpreted Acres : 97,099 Acres
Interpreter : Jim Grace

Legend

- Isolated Heat
- Scattered Heat
- Heat Perimeter



Lat/Long
GCS WGS84
major tics 1 minute
minor tics 30 seconds



120°43'0"W 120°41'0"W 120°39'0"W 120°37'0"W 120°35'0"W 120°33'0"W 120°31'0"W 120°29'0"W 120°27'0"W 120°25'0"W 120°23'0"W

39°10'0"N 39°9'0"N 39°8'0"N 39°7'0"N 39°6'0"N 39°5'0"N 39°4'0"N 39°3'0"N 39°2'0"N 39°1'0"N 39°0'0"N 38°59'0"N 38°58'0"N 38°57'0"N 38°56'0"N 38°55'0"N 38°54'0"N 38°53'0"N 38°52'0"N 38°51'0"N 38°50'0"N 38°49'0"N 38°48'0"N 38°47'0"N 38°46'0"N 38°45'0"N 38°44'0"N

39°10'0"N 39°9'0"N 39°8'0"N 39°7'0"N 39°6'0"N 39°5'0"N 39°4'0"N 39°3'0"N 39°2'0"N 39°1'0"N 39°0'0"N 38°59'0"N 38°58'0"N 38°57'0"N 38°56'0"N 38°55'0"N 38°54'0"N 38°53'0"N 38°52'0"N 38°51'0"N 38°50'0"N 38°49'0"N 38°48'0"N 38°47'0"N 38°46'0"N 38°45'0"N 38°44'0"N