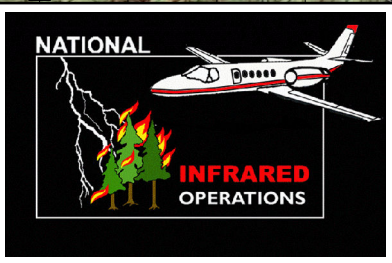
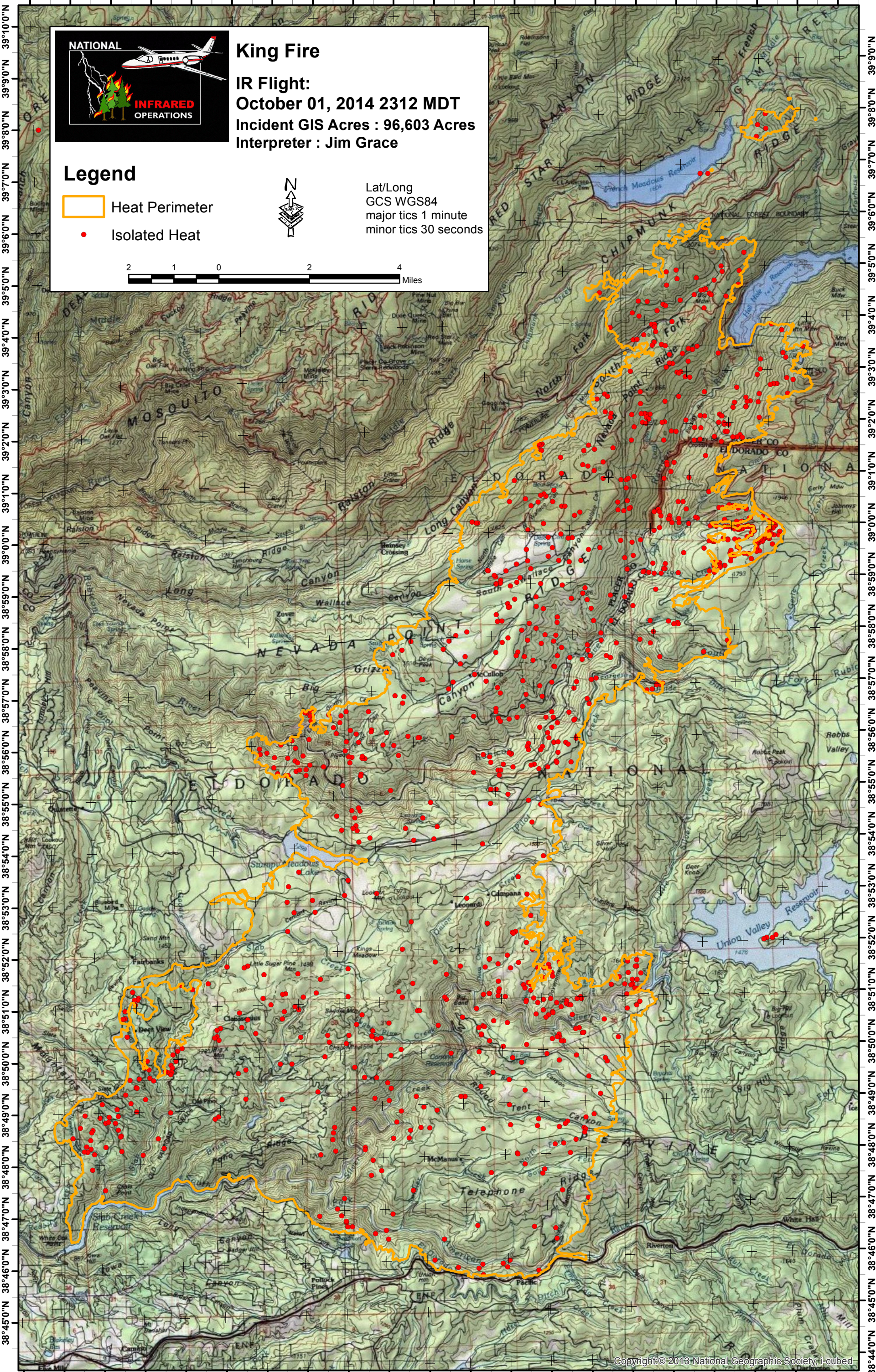


120°42'0"W 120°40'0"W 120°38'0"W 120°36'0"W 120°34'0"W 120°32'0"W 120°30'0"W 120°28'0"W 120°26'0"W 120°24'0"W 120°22'0"W



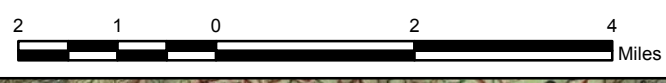
King Fire
IR Flight:
October 01, 2014 2312 MDT
Incident GIS Acres : 96,603 Acres
Interpreter : Jim Grace

Legend

- Heat Perimeter
- Isolated Heat



Lat/Long
GCS WGS84
major tics 1 minute
minor tics 30 seconds



120°43'0"W 120°41'0"W 120°39'0"W 120°37'0"W 120°35'0"W 120°33'0"W 120°31'0"W 120°29'0"W 120°27'0"W 120°25'0"W 120°23'0"W