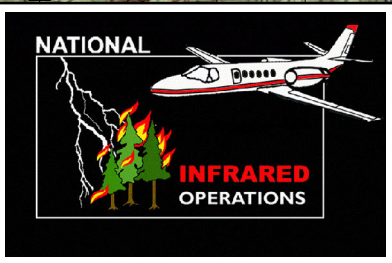
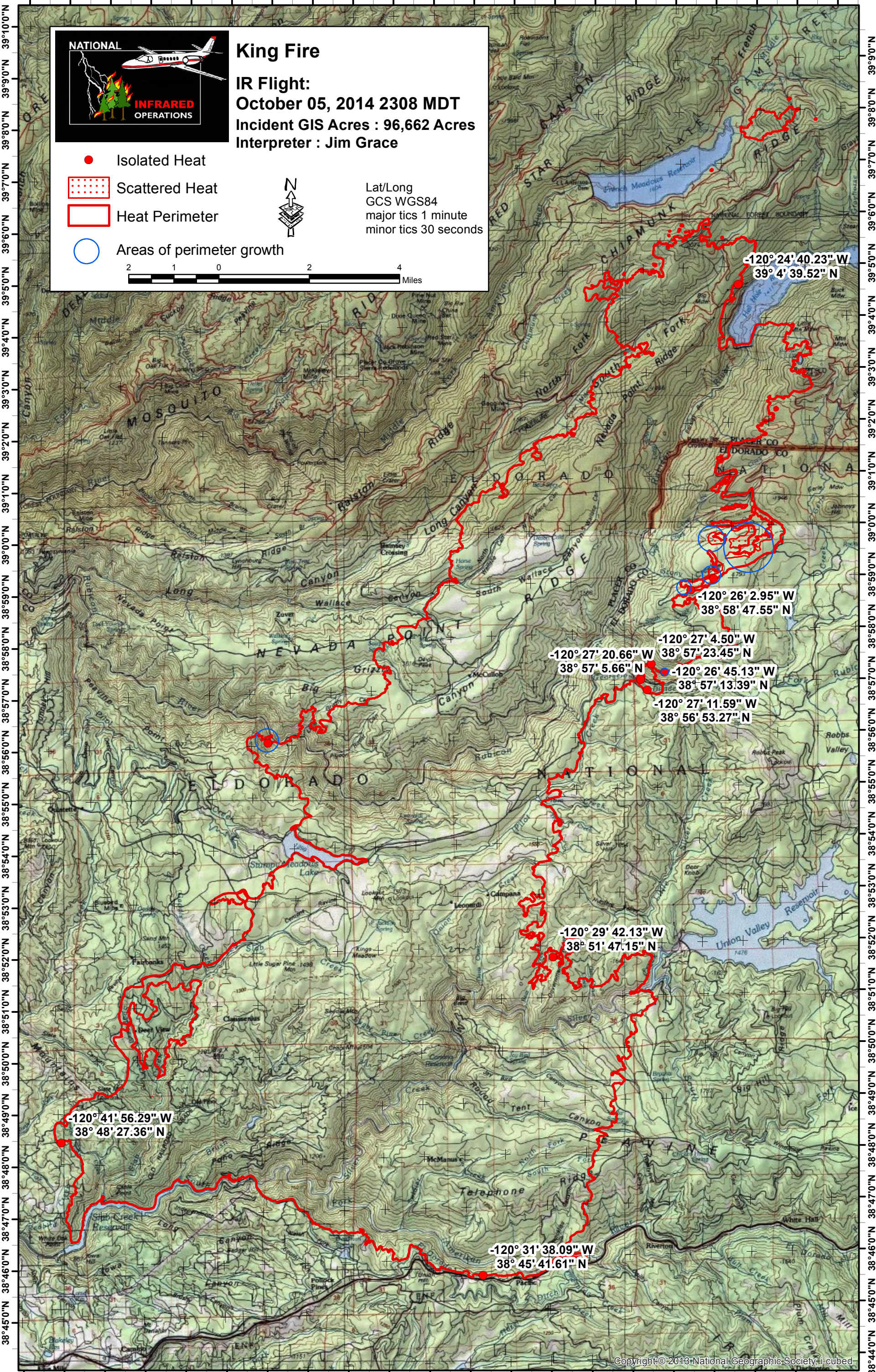


120°42'0"W 120°40'0"W 120°38'0"W 120°36'0"W 120°34'0"W 120°32'0"W 120°30'0"W 120°28'0"W 120°26'0"W 120°24'0"W 120°22'0"W



King Fire
IR Flight:
October 05, 2014 2308 MDT
Incident GIS Acres : 96,662 Acres
Interpreter : Jim Grace

- Isolated Heat
- Scattered Heat
- Heat Perimeter
- Areas of perimeter growth



Lat/Long
GCS WGS84
major tics 1 minute
minor tics 30 seconds



-120° 24' 40.23" W
39° 4' 39.52" N

-120° 26' 2.95" W
38° 58' 47.55" N

-120° 27' 4.50" W
38° 57' 23.45" N

-120° 27' 20.66" W
38° 57' 5.66" N

-120° 26' 45.13" W
38° 57' 13.39" N

-120° 27' 11.59" W
38° 56' 53.27" N

-120° 29' 42.13" W
38° 51' 47.15" N

-120° 41' 56.29" W
38° 48' 27.36" N

-120° 31' 38.09" W
38° 45' 41.61" N

120°43'0"W 120°41'0"W 120°39'0"W 120°37'0"W 120°35'0"W 120°33'0"W 120°31'0"W 120°29'0"W 120°27'0"W 120°25'0"W 120°23'0"W