

122°53'0"W

122°52'0"W

122°51'0"W

122°50'0"W

122°49'0"W

122°48'0"W

41°57'0"N

41°56'0"N

41°55'0"N

41°54'0"N

41°53'0"N

41°52'0"N

41°51'0"N

41°57'0"N

41°56'0"N

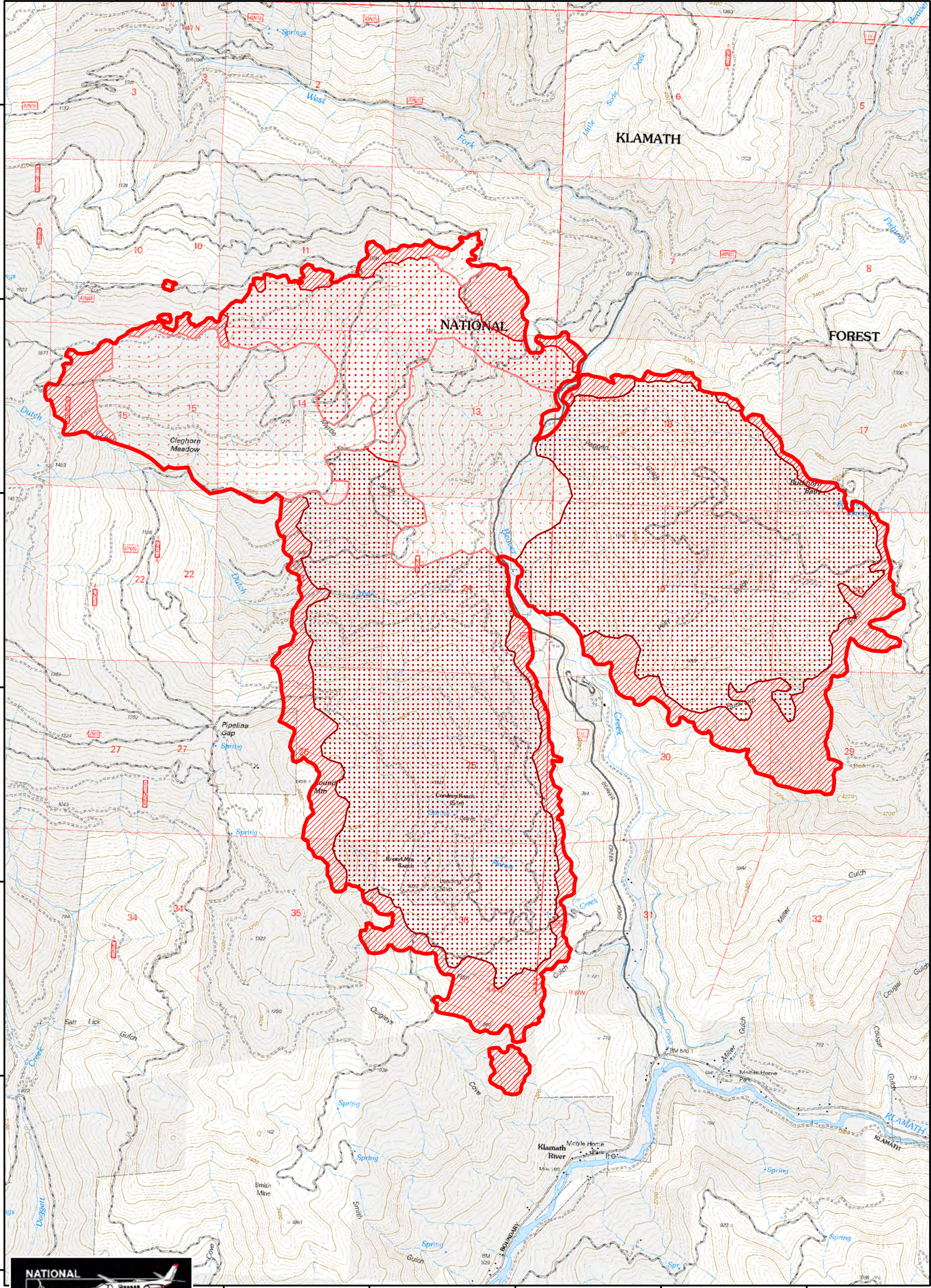
41°55'0"N

41°54'0"N



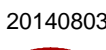



41°53'0"N

41°52'0"N

41°51'0"N



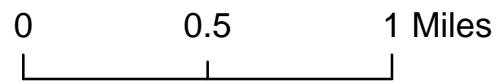
Legend

-  20140803_0049_Beaver_HeatPerimeter
-  20140803_0049_Beaver_IntenseHeat
-  20140803_0049_Beaver_ScatteredHeat
-  High Scattered Heat
-  Moderate Scattered Heat
-  Low Scattered Heat

7,001 Acres



Lat/Long
GCS_WGS_1984



Melanie Kerr
Beaver Fire
IR Flight August 03, 2014 0049 hr