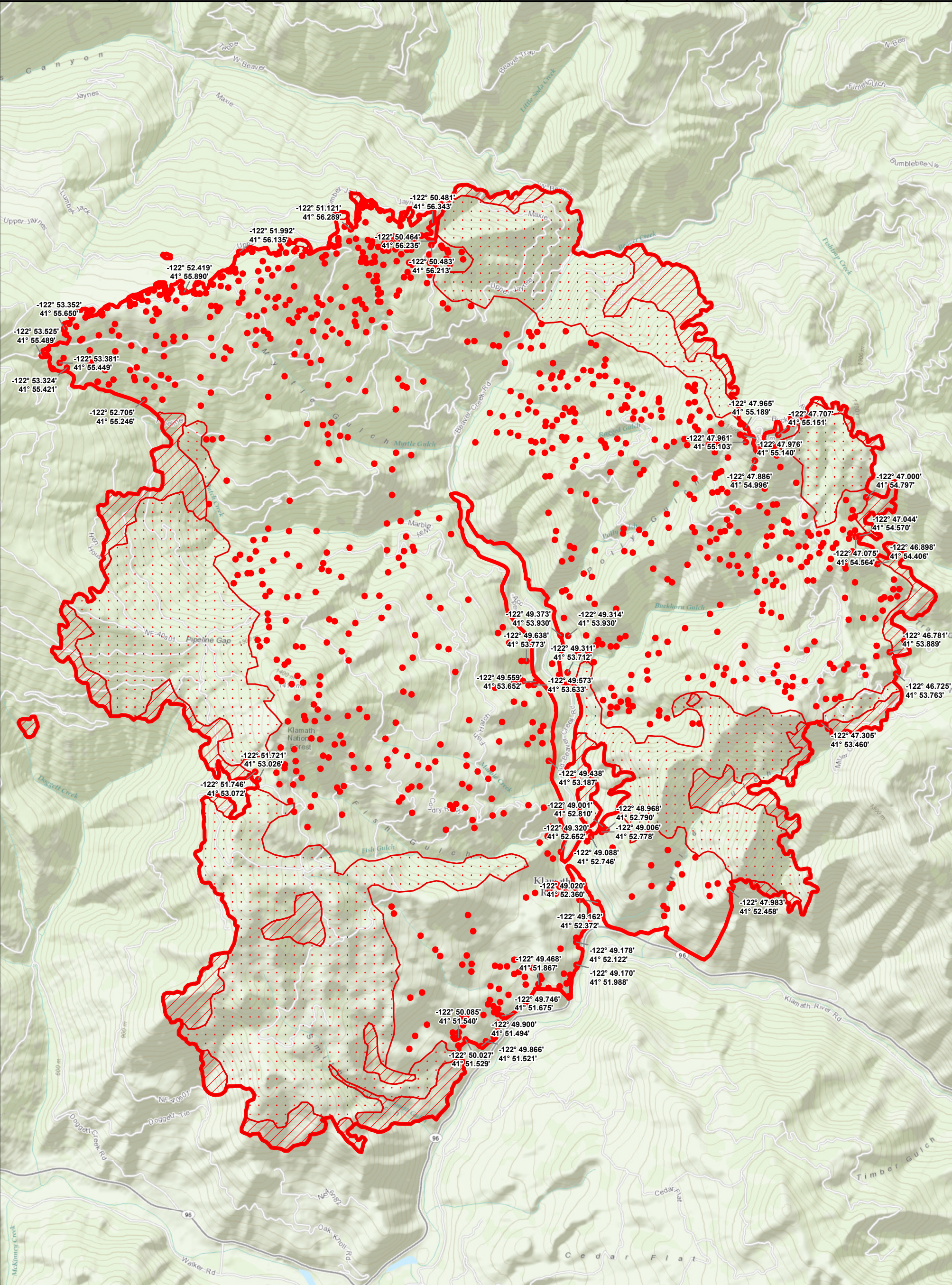


122°53'0"W 122°52'0"W 122°51'0"W 122°50'0"W 122°49'0"W 122°48'0"W 122°47'0"W

41°57'0"N  
41°56'0"N  
41°55'0"N  
41°54'0"N  
41°53'0"N  
41°52'0"N  
41°51'0"N  
41°50'0"N

41°57'0"N  
41°56'0"N  
41°55'0"N  
41°54'0"N  
41°53'0"N  
41°52'0"N  
41°51'0"N  
41°50'0"N



Sources: Esri, DeLorme, NAVTEQ, TomTom, Intermap, increment P Corp., GEBCO, USGS, FAO, NPS, NRCAN, GeoBase, IGN, Kadaster NL, Ordnance Survey, Esri Japan, METI, Esri China (Hong Kong), swisstopo, and the GIS User Community







Melanie Kerr

# Beaver Fire IR Flight August 06, 2014 0103 hr

15,230 Acres

### Legend

-  20140806\_0103\_Beaver\_HeatPerimeter
-  20140806\_0103\_Beaver\_ScatteredHeat
-  20140806\_0103\_Beaver\_IntenseHeat
-  20140806\_0103\_Beaver\_IsolatedHeatSource



Lat/Long  
GCS\_WGS\_1984

