

123°7'W

123°6'W

123°5'W

# KNF July Complex Rays Peak

CA-KNF-005564

Infrared Interpretation

Imagery Date:

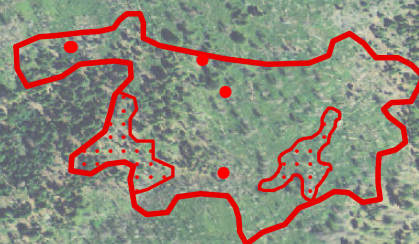
08/04/2014 0104 Hrs

Heat acres: 21



41°3'N

41°3'N



IRIN: Joe Larson  
Map produced:  
8/4/2014 0157 hrs



	Heat Perimeter
	Intense Heat Areas
	Scattered Heat Areas
	Isolated Heat Sources
NAD 1983 UTM Zone 10N	

123°7'W

123°6'W

123°5'W