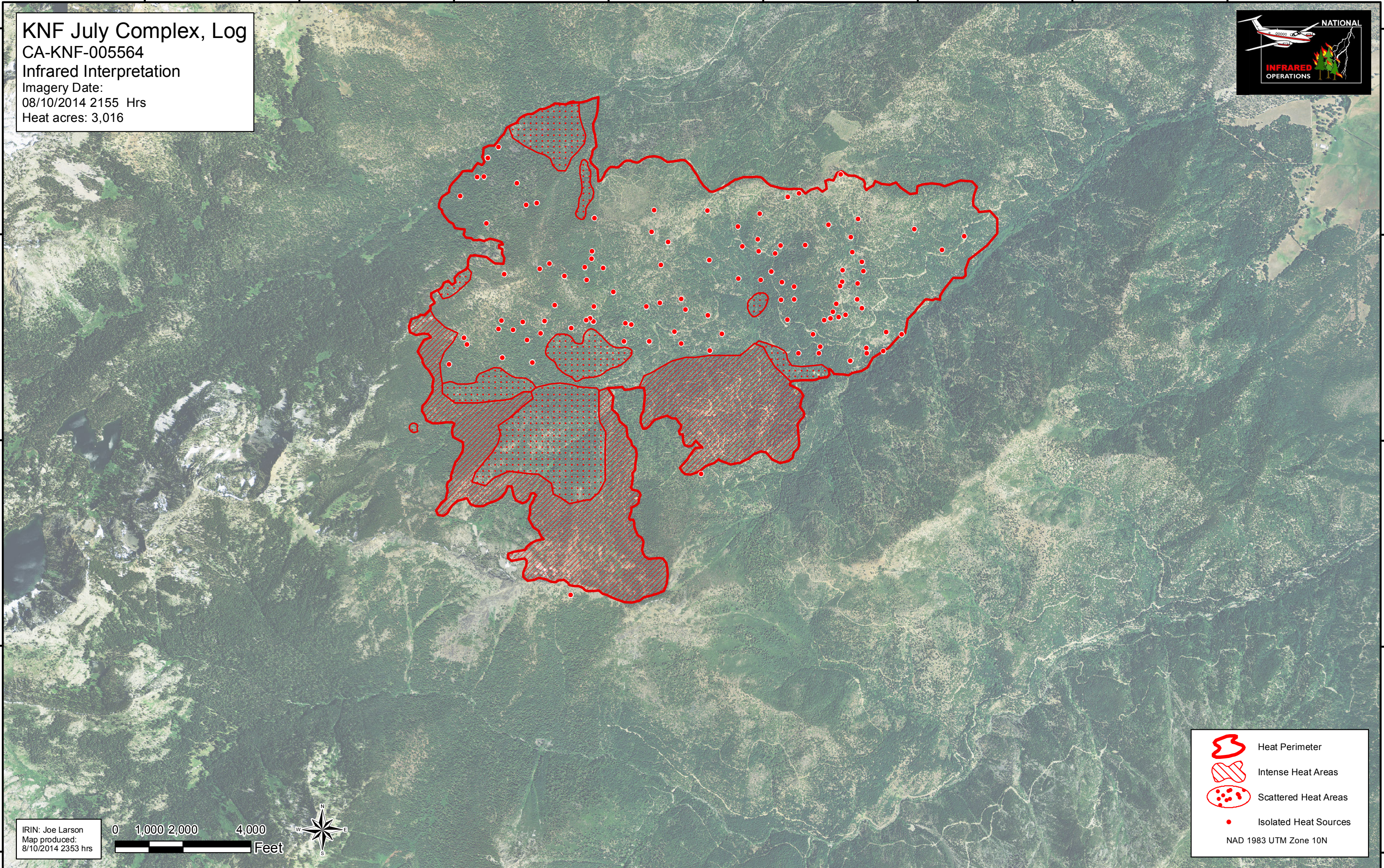
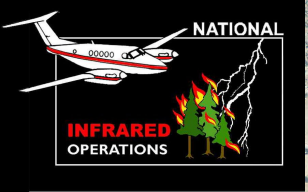


123°6'W 123°5'W 123°4'W 123°3'W 123°2'W 123°1'W 123°0'W 122°59'W

41°34'N  
41°33'N  
41°32'N  
41°31'N  
41°30'N





41°34'N  
41°33'N  
41°32'N  
41°31'N  
41°30'N

**KNF July Complex, Log**  
CA-KNF-005564  
Infrared Interpretation  
Imagery Date:  
08/10/2014 2155 Hrs  
Heat acres: 3,016



IRIN: Joe Larson  
Map produced:  
8/10/2014 2353 hrs



-  Heat Perimeter
-  Intense Heat Areas
-  Scattered Heat Areas
-  Isolated Heat Sources

NAD 1983 UTM Zone 10N

123°6'W 123°5'W 123°4'W 123°3'W 123°2'W 123°1'W 123°0'W 122°59'W