

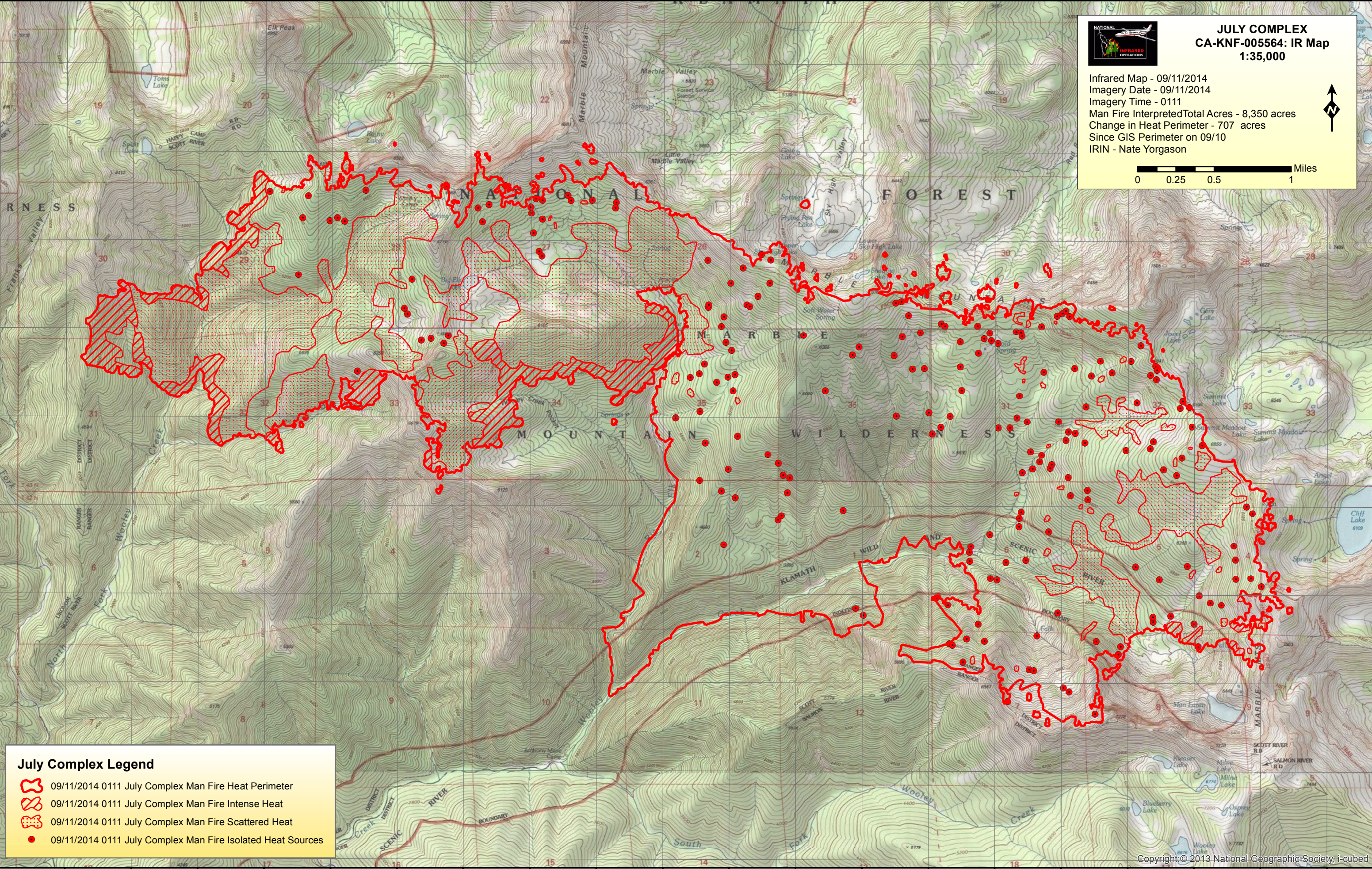
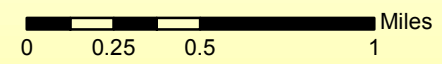
123°17'0"W 123°16'30"W 123°16'0"W 123°15'30"W 123°15'0"W 123°14'30"W 123°14'0"W 123°13'30"W 123°13'0"W 123°12'30"W 123°12'0"W 123°11'30"W 123°11'0"W 123°10'30"W 123°10'0"W 123°9'30"W 123°9'0"W 123°8'30"W 123°8'0"W 123°7'30"W 123°7'0"W

41°34'0"N
41°33'30"N
41°33'0"N
41°32'30"N
41°32'0"N
41°31'30"N
41°31'0"N
41°30'30"N
41°30'0"N
41°29'30"N



JULY COMPLEX CA-KNF-005564: IR Map 1:35,000

Infrared Map - 09/11/2014
Imagery Date - 09/11/2014
Imagery Time - 0111
Man Fire Interpreted Total Acres - 8,350 acres
Change in Heat Perimeter - 707 acres
Since GIS Perimeter on 09/10
IRIN - Nate Yorgason



July Complex Legend

- 09/11/2014 0111 July Complex Man Fire Heat Perimeter
- 09/11/2014 0111 July Complex Man Fire Intense Heat
- 09/11/2014 0111 July Complex Man Fire Scattered Heat
- 09/11/2014 0111 July Complex Man Fire Isolated Heat Sources

123°16'30"W 123°16'0"W 123°15'30"W 123°15'0"W 123°14'30"W 123°14'0"W 123°13'30"W 123°13'0"W 123°12'30"W 123°12'0"W 123°11'30"W 123°11'0"W 123°10'30"W 123°10'0"W 123°9'30"W 123°9'0"W 123°8'30"W 123°8'0"W 123°7'30"W 123°7'0"W