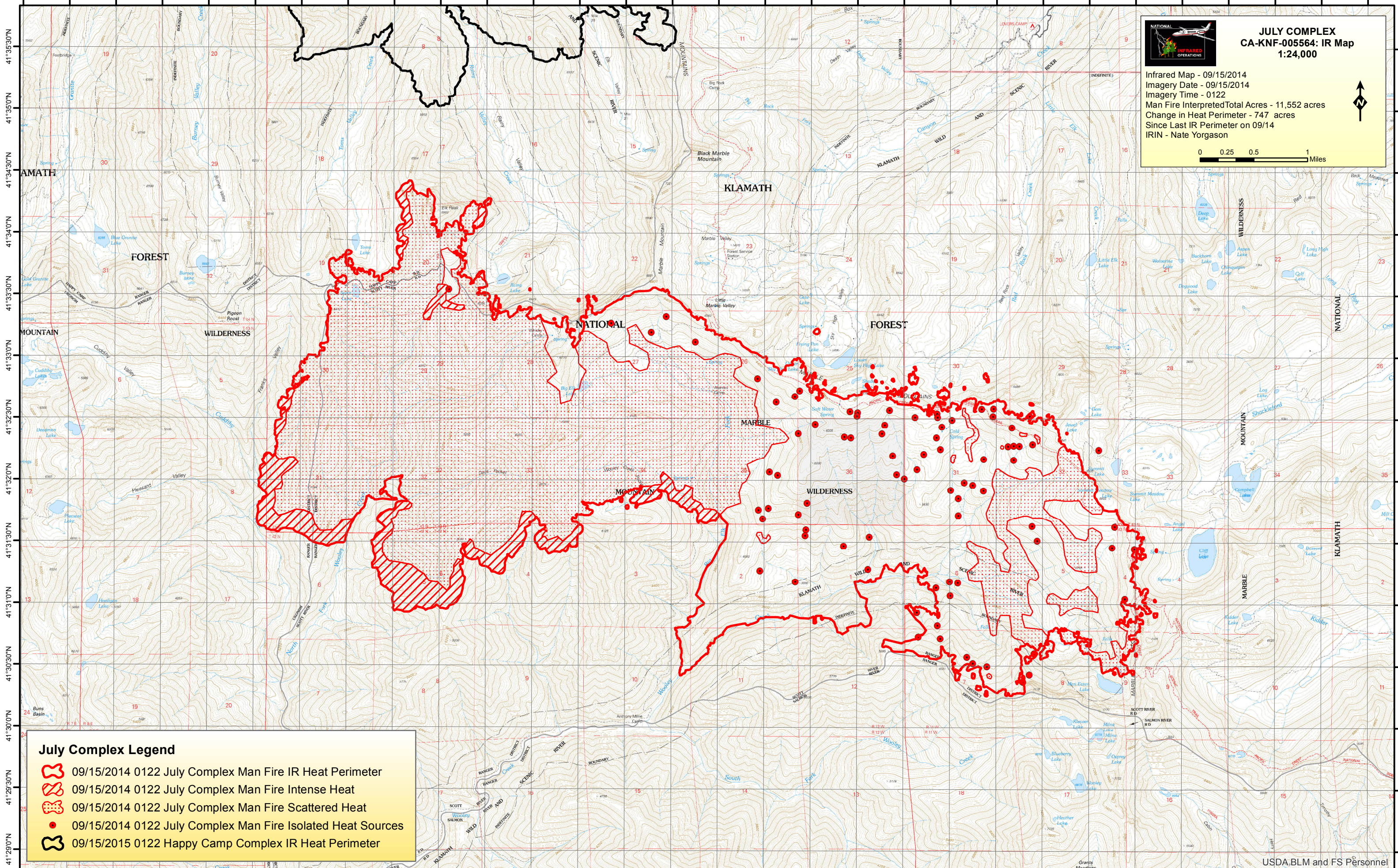



123°19'30"W 123°19'0"W 123°18'30"W 123°18'0"W 123°17'30"W 123°17'0"W 123°16'30"W 123°16'0"W 123°15'30"W 123°15'0"W 123°14'30"W 123°14'0"W 123°13'30"W 123°13'0"W 123°12'30"W 123°12'0"W 123°11'30"W 123°11'0"W 123°10'30"W 123°10'0"W 123°9'30"W 123°9'0"W 123°8'30"W 123°8'0"W 123°7'30"W 123°7'0"W 123°6'30"W 123°6'0"W 123°5'30"W 123°5'0"W






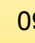

**JULY COMPLEX**  
**CA-KNF-005564: IR Map**  
**1:24,000**

Infrared Map - 09/15/2014  
 Imagery Date - 09/15/2014  
 Imagery Time - 0122  
 Man Fire Interpreted Total Acres - 11,552 acres  
 Change in Heat Perimeter - 747 acres  
 Since Last IR Perimeter on 09/14  
 IRIN - Nate Yorgason

0 0.25 0.5 1 Miles



**July Complex Legend**

-  09/15/2014 0122 July Complex Man Fire IR Heat Perimeter
-  09/15/2014 0122 July Complex Man Fire Intense Heat
-  09/15/2014 0122 July Complex Man Fire Scattered Heat
-  09/15/2014 0122 July Complex Man Fire Isolated Heat Sources
-  09/15/2015 0122 Happy Camp Complex IR Heat Perimeter

123°19'30"W 123°19'0"W 123°18'30"W 123°18'0"W 123°17'30"W 123°17'0"W 123°16'30"W 123°16'0"W 123°15'30"W 123°15'0"W 123°14'30"W 123°14'0"W 123°13'30"W 123°13'0"W 123°12'30"W 123°12'0"W 123°11'30"W 123°11'0"W 123°10'30"W 123°10'0"W 123°9'30"W 123°9'0"W 123°8'30"W 123°8'0"W 123°7'30"W 123°7'0"W 123°6'30"W 123°6'0"W 123°5'30"W 123°5'0"W