



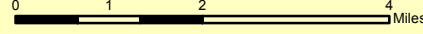
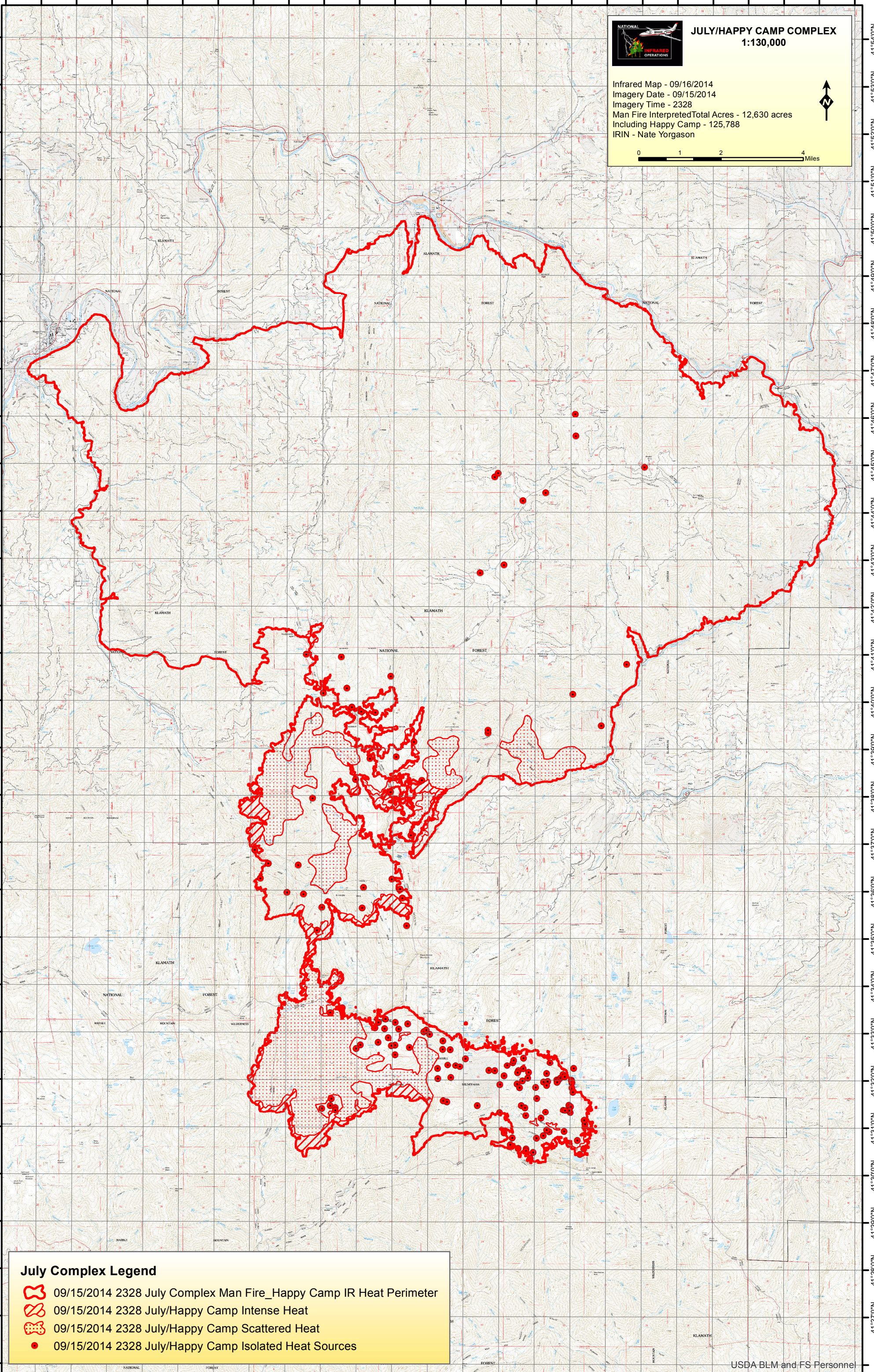
123°23'0"W 123°21'0"W 123°19'0"W 123°17'0"W 123°15'0"W 123°13'0"W 123°11'0"W 123°9'0"W 123°8'0"W 123°7'0"W 123°6'0"W 123°5'0"W 123°4'0"W 123°3'0"W 123°2'0"W 123°1'0"W 123°0'0"W

41°54'0"N
41°53'0"N
41°52'0"N
41°51'0"N
41°50'0"N
41°49'0"N
41°48'0"N
41°47'0"N
41°46'0"N
41°45'0"N
41°44'0"N
41°43'0"N
41°42'0"N
41°41'0"N
41°40'0"N
41°39'0"N
41°38'0"N
41°37'0"N
41°36'0"N
41°35'0"N
41°34'0"N
41°33'0"N
41°32'0"N
41°31'0"N
41°30'0"N
41°29'0"N
41°28'0"N
41°27'0"N
41°26'0"N




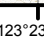


JULY/HAPPY CAMP COMPLEX
1:130,000

Infrared Map - 09/16/2014
Imagery Date - 09/15/2014
Imagery Time - 2328
Man Fire Interpreted Total Acres - 12,630 acres
Including Happy Camp - 125,788
IRIN - Nate Yorgason

July Complex Legend

-  09/15/2014 2328 July Complex Man Fire_Happy Camp IR Heat Perimeter
-  09/15/2014 2328 July/Happy Camp Intense Heat
-  09/15/2014 2328 July/Happy Camp Scattered Heat
-  09/15/2014 2328 July/Happy Camp Isolated Heat Sources

123°23'0"W 123°21'0"W 123°19'0"W 123°17'0"W 123°15'0"W 123°13'0"W 123°11'0"W 123°9'0"W 123°8'0"W 123°7'0"W 123°6'0"W 123°5'0"W 123°4'0"W 123°3'0"W 123°2'0"W 123°1'0"W 123°0'0"W