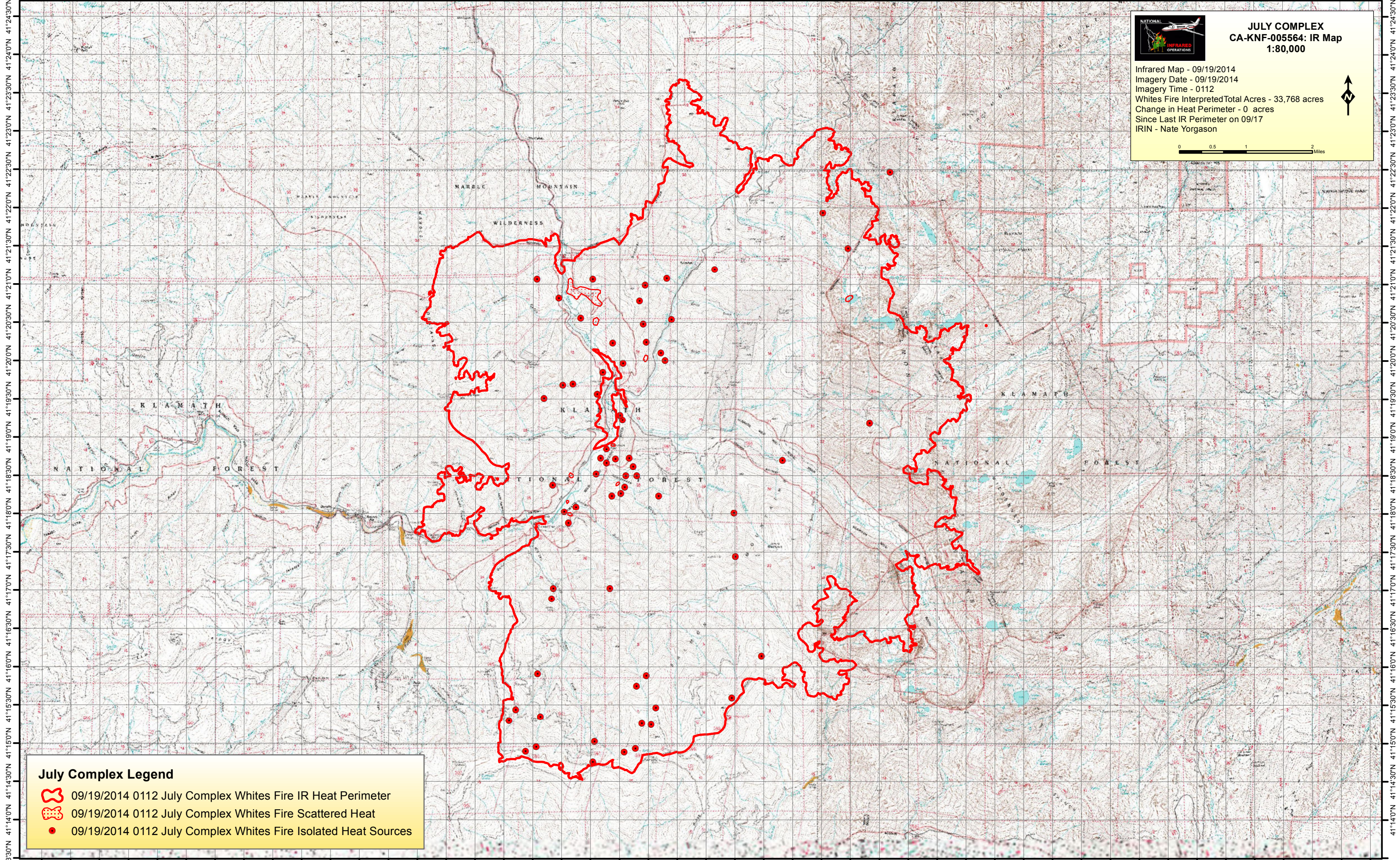



123°13'30"W 123°12'30"W 123°11'30"W 123°10'30"W 123°9'30"W 123°8'30"W 123°7'30"W 123°6'30"W 123°5'30"W 123°4'30"W 123°3'30"W 123°2'30"W 123°1'30"W 122°59'30"W 122°58'30"W 122°57'30"W 122°56'30"W 122°55'30"W 122°54'30"W 122°53'30"W 122°52'30"W 122°51'30"W 122°50'30"W






JULY COMPLEX
CA-KNF-005564: IR Map
1:80,000

Infrared Map - 09/19/2014
 Imagery Date - 09/19/2014
 Imagery Time - 0112
 Whites Fire Interpreted Total Acres - 33,768 acres
 Change in Heat Perimeter - 0 acres
 Since Last IR Perimeter on 09/17
 IRIN - Nate Yorgason

0 0.5 1 2 Miles



July Complex Legend

-  09/19/2014 0112 July Complex Whites Fire IR Heat Perimeter
-  09/19/2014 0112 July Complex Whites Fire Scattered Heat
-  09/19/2014 0112 July Complex Whites Fire Isolated Heat Sources

41°13'30"N 41°14'00"N 41°14'30"N 41°15'00"N 41°15'30"N 41°16'00"N 41°16'30"N 41°17'00"N 41°17'30"N 41°18'00"N 41°18'30"N 41°19'00"N 41°19'30"N 41°20'00"N 41°20'30"N 41°21'00"N 41°21'30"N 41°22'00"N 41°22'30"N 41°23'00"N 41°23'30"N 41°24'00"N 41°24'30"N