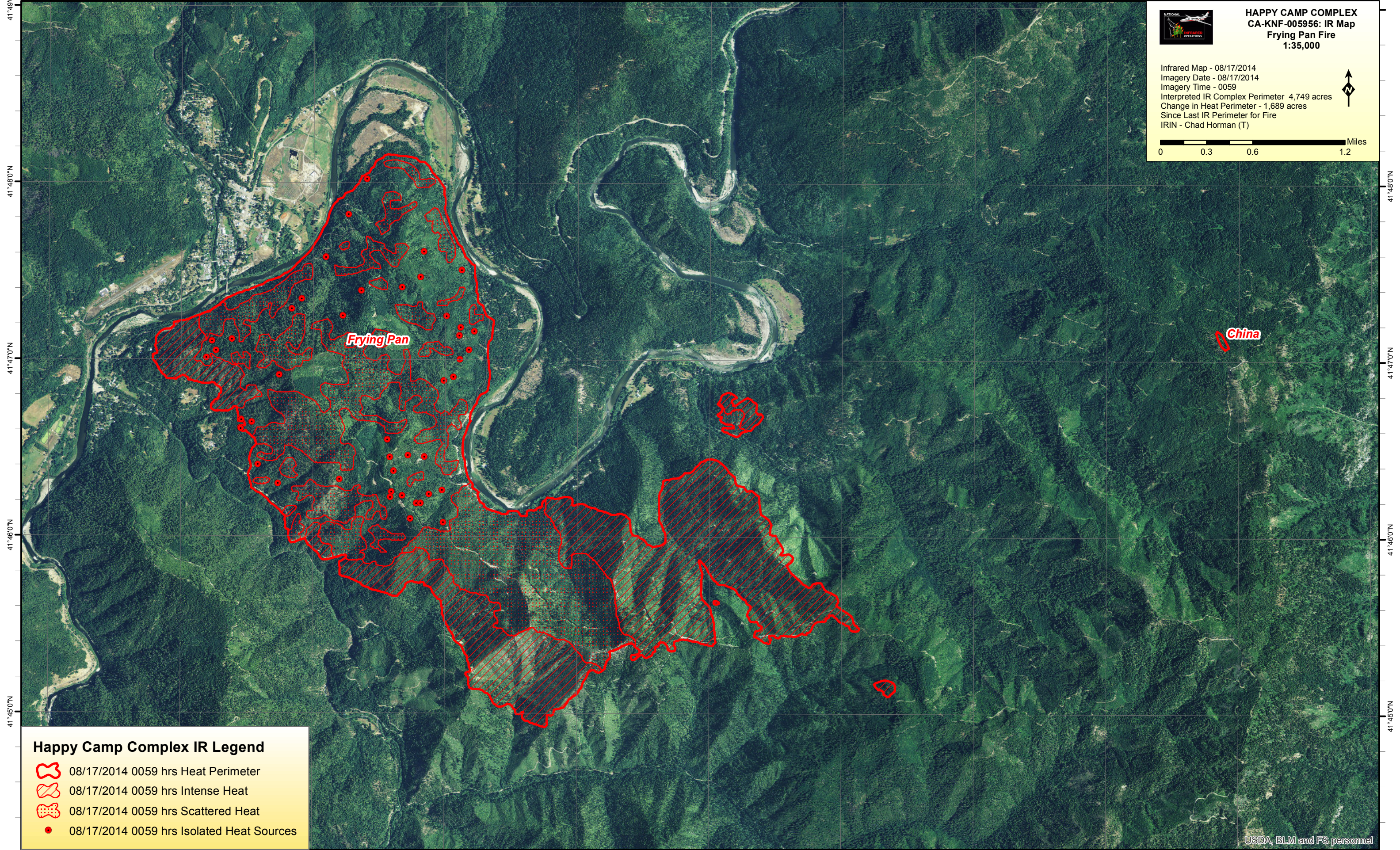
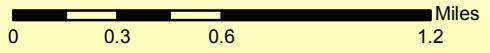


123°24'0"W 123°23'0"W 123°22'0"W 123°21'0"W 123°20'0"W 123°19'0"W 123°18'0"W 123°17'0"W 123°16'0"W 123°15'0"W 123°14'0"W



**HAPPY CAMP COMPLEX
CA-KNF-005956: IR Map
Fryling Pan Fire
1:35,000**





Infrared Map - 08/17/2014
Imagery Date - 08/17/2014
Imagery Time - 0059
Interpreted IR Complex Perimeter 4,749 acres
Change in Heat Perimeter - 1,689 acres
Since Last IR Perimeter for Fire
IRIN - Chad Horman (T)



41°49'0"N
41°48'0"N
41°47'0"N
41°46'0"N
41°45'0"N

41°49'0"N
41°48'0"N
41°47'0"N
41°46'0"N
41°45'0"N

Happy Camp Complex IR Legend

-  08/17/2014 0059 hrs Heat Perimeter
-  08/17/2014 0059 hrs Intense Heat
-  08/17/2014 0059 hrs Scattered Heat
-  08/17/2014 0059 hrs Isolated Heat Sources

123°24'0"W 123°23'0"W 123°22'0"W 123°21'0"W 123°20'0"W 123°19'0"W 123°18'0"W 123°17'0"W 123°16'0"W 123°15'0"W 123°14'0"W