

123°24'0"W 123°23'0"W 123°22'0"W 123°21'0"W 123°20'0"W 123°19'0"W 123°18'0"W 123°17'0"W 123°16'0"W



HAPPY CAMP COMPLEX CA-KNF-005956: IR Map 1:115,000

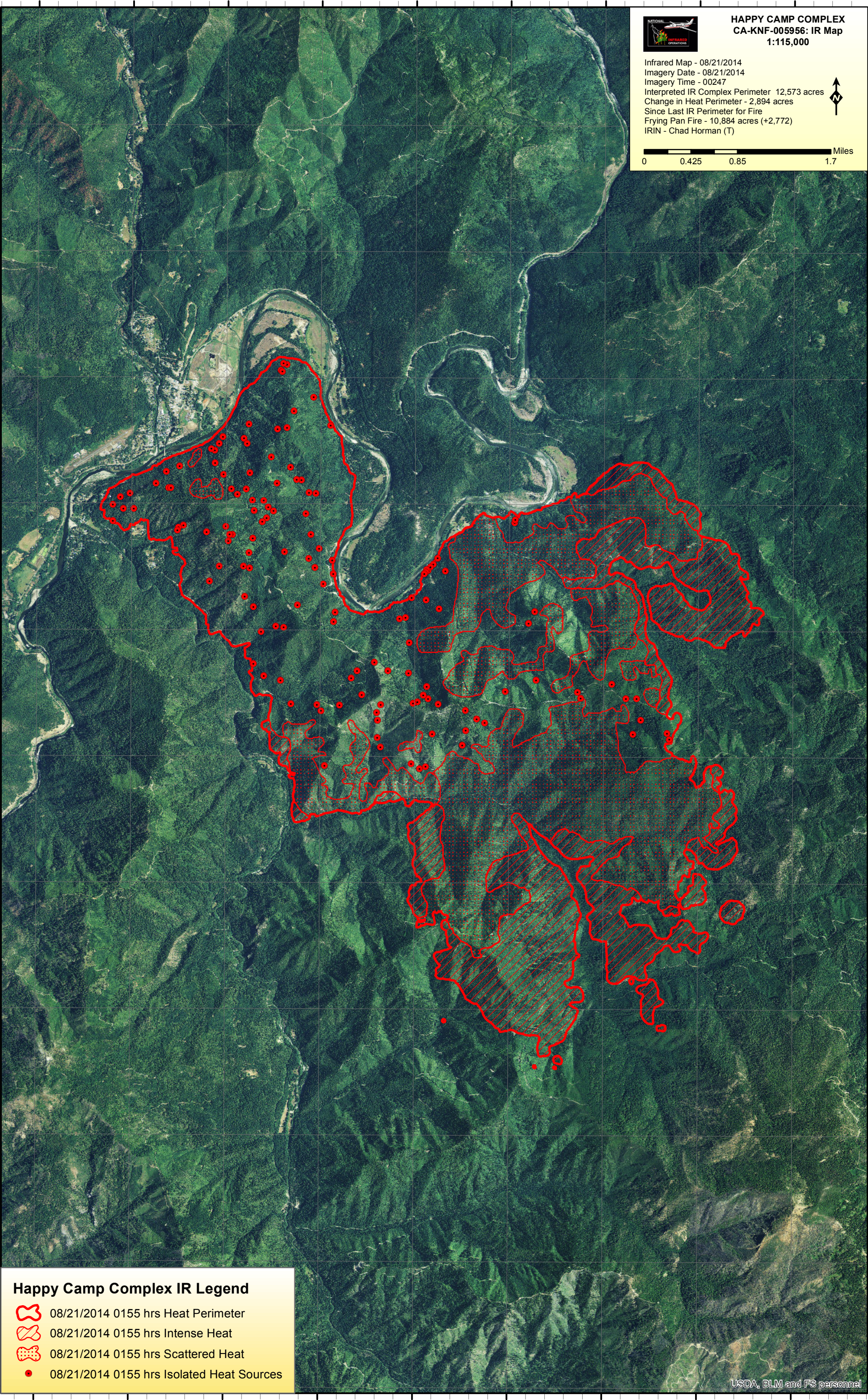
Infrared Map - 08/21/2014
Imagery Date - 08/21/2014
Imagery Time - 00247
Interpreted IR Complex Perimeter 12,573 acres
Change in Heat Perimeter - 2,894 acres
Since Last IR Perimeter for Fire
Frying Pan Fire - 10,884 acres (+2,772)
IRIN - Chad Horman (T)







0 0.425 0.85 1.7 Miles

41°50'0"N
41°49'0"N
41°48'0"N
41°47'0"N
41°46'0"N
41°45'0"N
41°44'0"N
41°43'0"N
41°42'0"N
41°41'0"N
41°40'0"N

41°50'0"N
41°49'0"N
41°48'0"N
41°47'0"N
41°46'0"N
41°45'0"N
41°44'0"N
41°43'0"N
41°42'0"N
41°41'0"N
41°40'0"N



Happy Camp Complex IR Legend

-  08/21/2014 0155 hrs Heat Perimeter
-  08/21/2014 0155 hrs Intense Heat
-  08/21/2014 0155 hrs Scattered Heat
-  08/21/2014 0155 hrs Isolated Heat Sources

123°24'0"W 123°23'0"W 123°22'0"W 123°21'0"W 123°20'0"W 123°19'0"W 123°18'0"W 123°17'0"W 123°16'0"W