


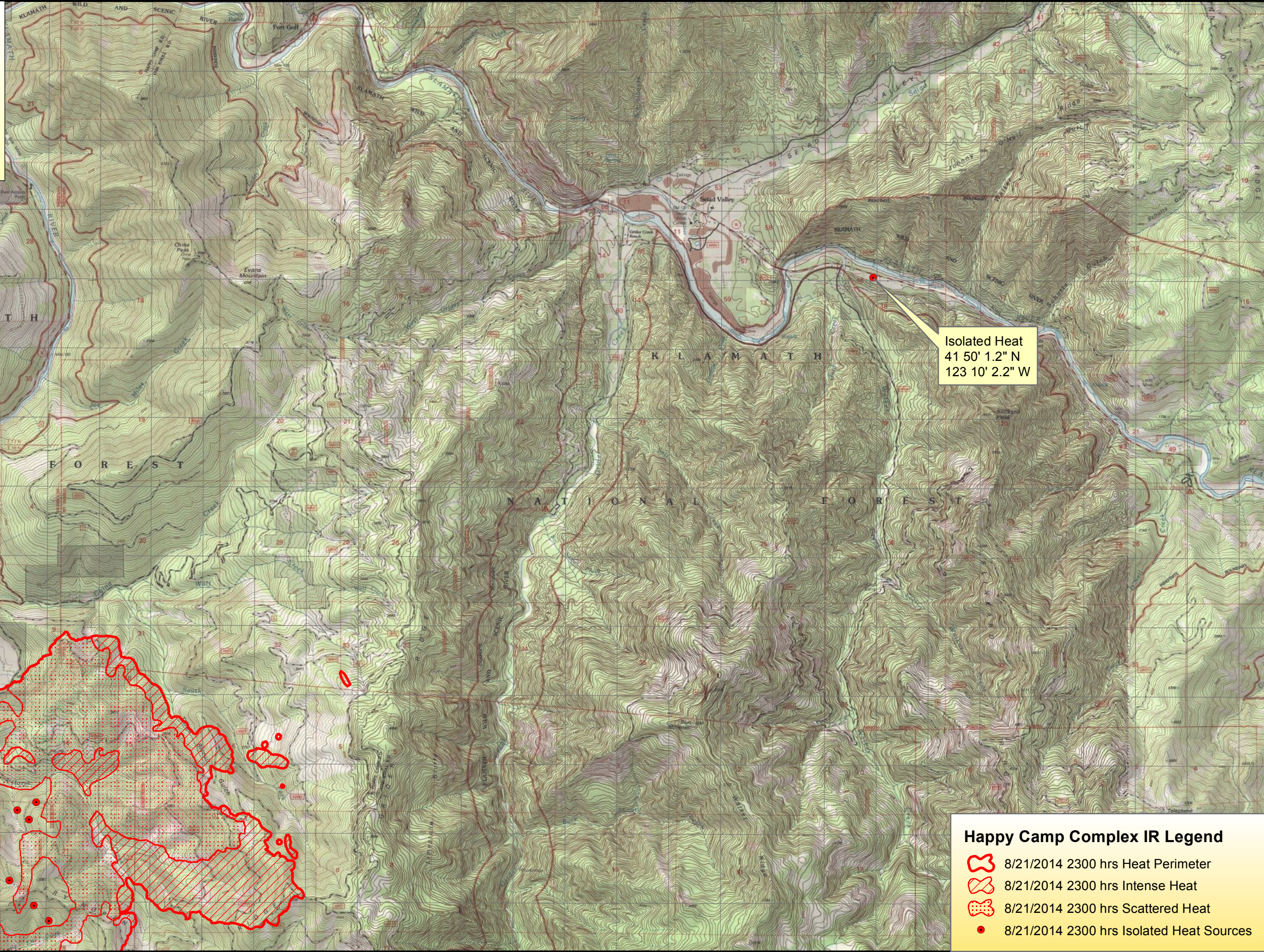
123°20'30"W 123°20'0"W 123°19'30"W 123°19'0"W 123°18'30"W 123°18'0"W 123°17'30"W 123°17'0"W 123°16'30"W 123°16'0"W 123°15'30"W 123°15'0"W 123°14'30"W 123°14'0"W 123°13'30"W 123°13'0"W 123°12'30"W 123°12'0"W 123°11'30"W 123°11'0"W 123°10'30"W 123°10'0"W 123°9'30"W 123°9'0"W 123°8'30"W 123°8'0"W 123°7'30"W 123°7'0"W 123°6'30"W



**HAPPY CAMP COMPLEX**  
**CA-KNF-005956: IR MAP**  
**Isolated Heat**  
**1:50,000**





Infrared Map - 08/22/2014  
 Imagery Date - 08/21/2014  
 Imagery Time - 2300  
 Interpreted IR Complex Perimeter 15,485 acres  
 Change in Heat Perimeter - 2,912 acres  
 Since Last IR Perimeter for Fire  
 IRIN - Chad Horman (T)

0 0.425 0.85 1.7 Miles



Isolated Heat  
 41 50' 1.2" N  
 123 10' 2.2" W

**Happy Camp Complex IR Legend**

-  8/21/2014 2300 hrs Heat Perimeter
-  8/21/2014 2300 hrs Intense Heat
-  8/21/2014 2300 hrs Scattered Heat
-  8/21/2014 2300 hrs Isolated Heat Sources

123°20'30"W 123°20'0"W 123°19'30"W 123°19'0"W 123°18'30"W 123°18'0"W 123°17'30"W 123°17'0"W 123°16'30"W 123°16'0"W 123°15'30"W 123°15'0"W 123°14'30"W 123°14'0"W 123°13'30"W 123°13'0"W 123°12'30"W 123°12'0"W 123°11'30"W 123°11'0"W 123°10'30"W 123°10'0"W 123°9'30"W 123°9'0"W 123°8'30"W 123°8'0"W 123°7'30"W 123°7'0"W 123°6'30"W