

**INFRARED INTERPRETER'S DAILY LOG**

<b>Incident Name:</b> Happy Camp Complex CA-KNF-005956	<b>IR Interpreter(s):</b> Jennifer Frazer jfrazer@blm.gov	<b>Local Dispatch Phone:</b> Miles City 406-233-2900	<b>Interpreted Size:</b> 32,173 acres <b>Growth last period based on IR perimeter:</b> 4,843 acres
<b>Flight Time:</b> 2255 MDT <b>Flight Date:</b> 8/27/2014	<b>Interpreter(s) location:</b> Belle Fourche, SD <b>Interpreter(s) Phone:</b> 203-695-1207	<b>GACC IR Liaison:</b> Kyle Felker <b>GACC IR Liaison Phone:</b> 530-251-6112	<b>National Coordinator:</b> Jim Grace <b>National Coord. Phone:</b> 208-387-5381
<b>Ordered By:</b> Chris Fry (818-212-6079)	<b>A Number:</b> 97	<b>Aircraft/Scanner System:</b> 149Z/Phoenix	<b>Pilots/Techs:</b> Pete M, Andre M (Pilots)/ Rob N. (Tech)
<b>IRIN Comments on imagery:</b> Clear. 3 scans NS orientated runs. Kemper captured. Good overlap and better than last night.		<b>Weather at time of flight:</b> Clear	<b>Flight Objective:</b> Perimeter, intense, scattered and isolated heat. Primary focus: Frying Pan, Faulkstein
<b>Date and Time Imagery Received by Interpreter:</b> 8/27/2014 @ 2320 MDT		<b>Type of media for final product:</b> Electronic files: .zip and .kmz file of Intense Heat, Scattered Heat, Heat Perimeter, Isolated Heat Sources; ass. IR maps.	
<b>Date and Time Products Delivered to Incident:</b> 8/27/2014 @ 0400 MDT		<b>Digital files sent to:</b> ftp://ftp.nifc.gov/Incident_Specific_Data/CALIF_N/!2014_FEDERAL_Incidents/CA-KNF-05956_Happy_Camp_Cmplx/IR/	
<b>Comments /notes on tonight's mission and this interpretation:</b> <p>Started with previous IR perimeter from 8/27/14. On isolated heat source was found not related to the fire complex. This was located in Happy Camp, just west of the ICP.</p> <p>Frying Pan and Faulkstein are 0.07 miles or 375 feet apart (0.35 miles reported yesterday). The two fires are separated by a side drainage of Grider Creek. Both fires appeared to close the space together the same distance. Please see Faulkstein description below for more details in this area.</p> <p><u>Frying Pan Fire (26,679 acres) (+2,071)</u>  NW corner: Had the same trend as reported from past evenings. The area is cooling and there are fewer area of scattered heat; the majority of the area has isolated heat sources. This cooling trend is extending into the NE corner. The south-central portion of the fire as well is cooling. Areas of intense heat within the center are the result of activity within previously unburned islands.  West Flank: Some scattered heat and isolated heat observed along the perimeter, adjacent to Elk Creek. There was no heat observed west of this larger creek.  SW Corner: There was one isolated heat source outside the perimeter along the western side of Elk Creek. This area is cooling. There were no regions of intense heat until you reach farther up Doolittle Creek. This area is the region between Frying Pan Creek and the operational burn which is continuing to join together.  SE corner and East flank: This area holds the greatest level of heat on this fire. Overall the fire is working its way down Grider Ridge to Grider Creek. There are large fingers just west of Blue Mountain and near the northern flank of the Faulkstein fire.  In the SE corner, the fire has moved south at the base (0.3 miles N) of Huckleberry Mtn.  NE corner: This region of the fire has less heat than it did the last two nights. Intense heat was observed just south of Wolf Creek and this was predominantly concentrated where the burn operation met the northern heat perimeter of Frying Pan. The fire has not crossed China Creek. Overall the NE corner is cooling.</p> <p><u>Faulkstein Fire (5,228 acres)(+2,772)</u>  Fire grew to the north and west. In the North, the fire met the bottom of Grider Creek. Then traveled up the slope and over the ridge into the Rancheria Creek drainage to the NNE. From the western flank, the area of intense heat observed last night which crossed Grider Creek has fully encompassed the drainage SW of Tyler Meadows and crossed over Marble Mountain. Within Tyler Meadows is SafetyZone3 (SZ3). At the time of the imagery, the fire was located to the W, S, and E of the SZ3 area. The main eastern edge of the fire was 0.5 mile east of SZ3. There was a small heat perimeter (approx. 7 acres in size), 1.7 miles east of the eastern edge of the main fire. This source of heat is 0.8 miles west of Tompkin Creek and 1.8 miles from Drop Point 12. The southernmost heat perimeter of Faulkstein which was located east of Grider Creek and had growth. The area of intense heat observed last night has expanded east, cresting over Marble Mountain. Middle Creek drainage has been entered by Faulkstein on its western and northern edges. All of these areas described had intense heat. The hottest area was the eastern flank of the fire.  Along the western and southern edges of Faulkstein there was a small amount of perimeter growth and areas of intense heat. The core of the fire is cooling, with less isolated and scattered sources of heat.</p> <p><u>Kemper Fire (186 acres)</u> – 2 Isolated heat signatures seen. Both are within the interior and not close to the perimeter. Both of these were observed in last night's IR scan, they are 483 and 627 ft away from the perimeter.  <u>Sutcliffe Fire (27 acres)</u> – Not flown.  <u>Jackson Fire (21 acres)</u> – No heat and no growth.  <u>Thompson Fire (17 acres)</u> - No heat and no growth.  <u>Tims Fire (13 acres)</u> - No heat and no growth.  <u>China Fire (3 acres)</u> - Has been overtaken by Frying Pan. Acres included in that fire now.  <u>Mill Fire (2 acres)</u> - Not flown.</p>			

# Happy Camp Complex CA-KNF-005956



- Isolated Heat
- ▨ Scattered Heat
- ▨ Intense Heat
- Heat Perimeter

Mill

Sutcliffe

Kemper

Thompson

Tims

Jackson

West of ICP

Frying Pan

-123° 7.445', 41° 41.510'

Faulkstein

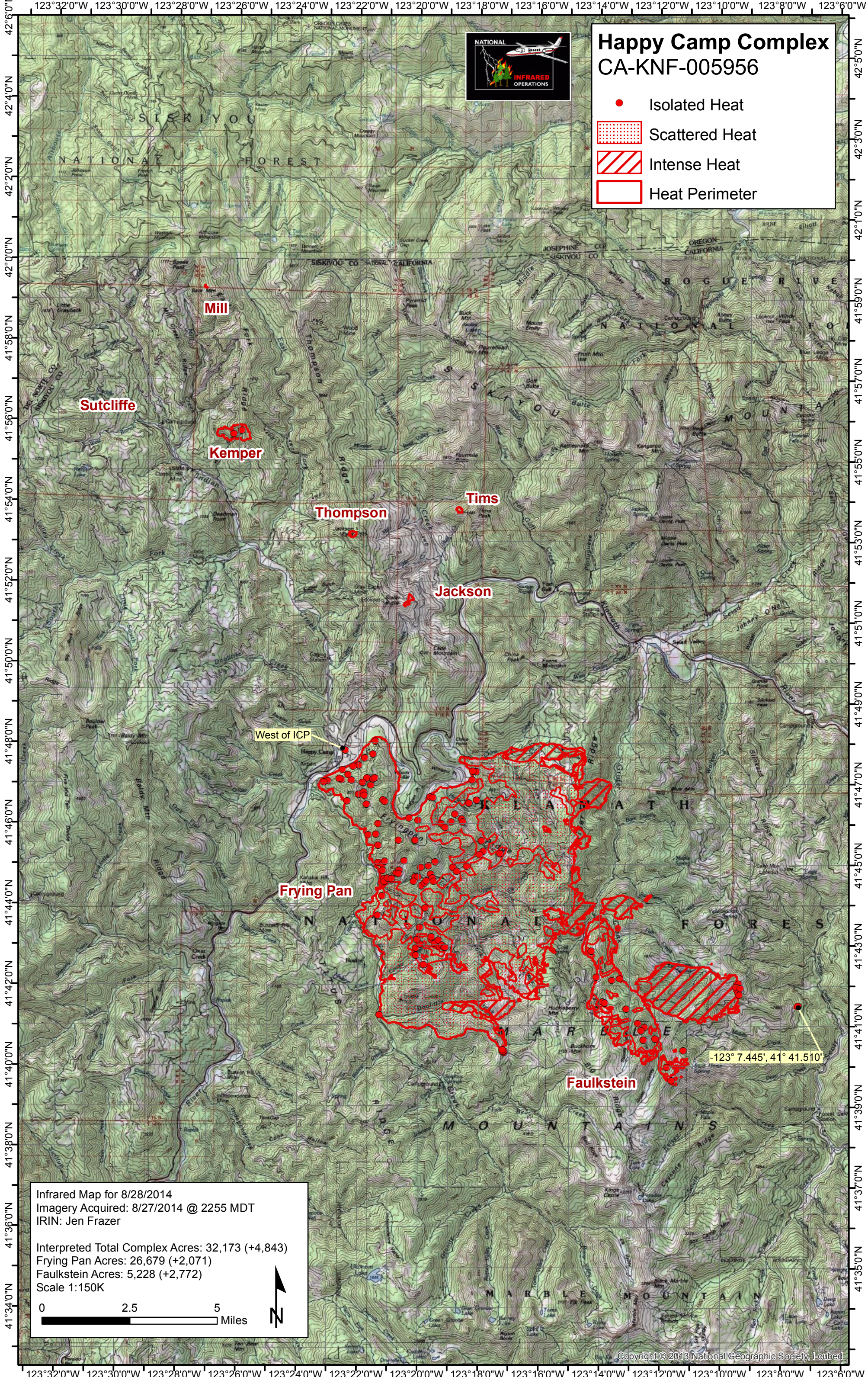
Infrared Map for 8/28/2014  
Imagery Acquired: 8/27/2014 @ 2255 MDT  
IRIN: Jen Frazer

Interpreted Total Complex Acres: 32,173 (+4,843)  
Frying Pan Acres: 26,679 (+2,071)  
Faulkstein Acres: 5,228 (+2,772)  
Scale 1:150K

# Happy Camp Complex CA-KNF-005956



- Isolated Heat
- Scattered Heat
- Intense Heat
- Heat Perimeter



**Sutcliffe**

**Mill**

**Kemper**

**Thompson**

**Tims**

**Jackson**

**West of ICP**

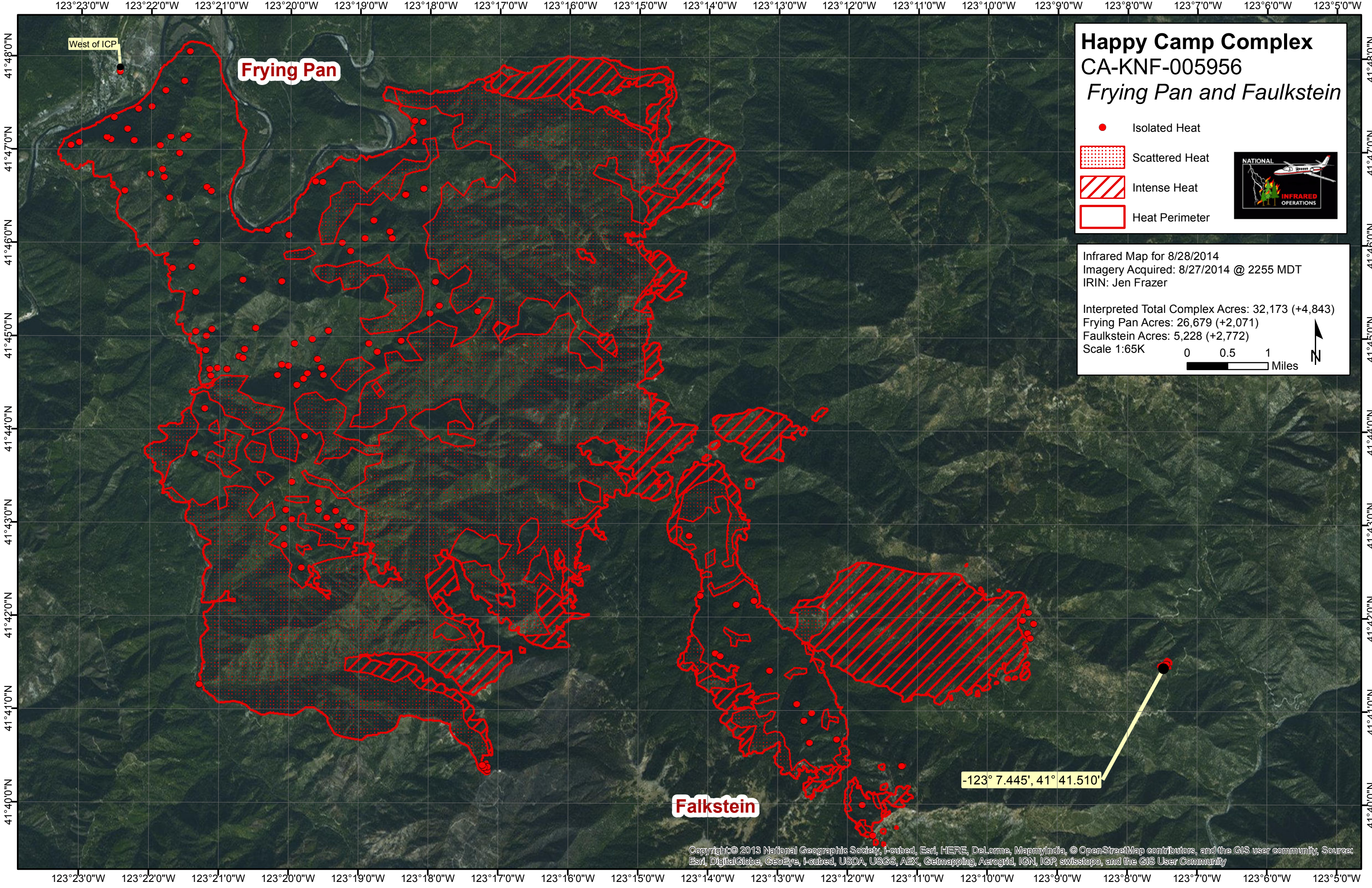
**Frying Pan**

**Faulkstein**

-123° 7.445', 41° 41.510'

Infrared Map for 8/28/2014  
 Imagery Acquired: 8/27/2014 @ 2255 MDT  
 IRIN: Jen Frazer

Interpreted Total Complex Acres: 32,173 (+4,843)  
 Frying Pan Acres: 26,679 (+2,071)  
 Faulkstein Acres: 5,228 (+2,772)  
 Scale 1:150K



West of ICP

**Frying Pan**

# Happy Camp Complex

## CA-KNF-005956

### *Frying Pan and Faulkstein*

- Isolated Heat
- Scattered Heat
- ▨ Intense Heat
- ▭ Heat Perimeter



Infrared Map for 8/28/2014  
Imagery Acquired: 8/27/2014 @ 2255 MDT  
IRIN: Jen Frazer

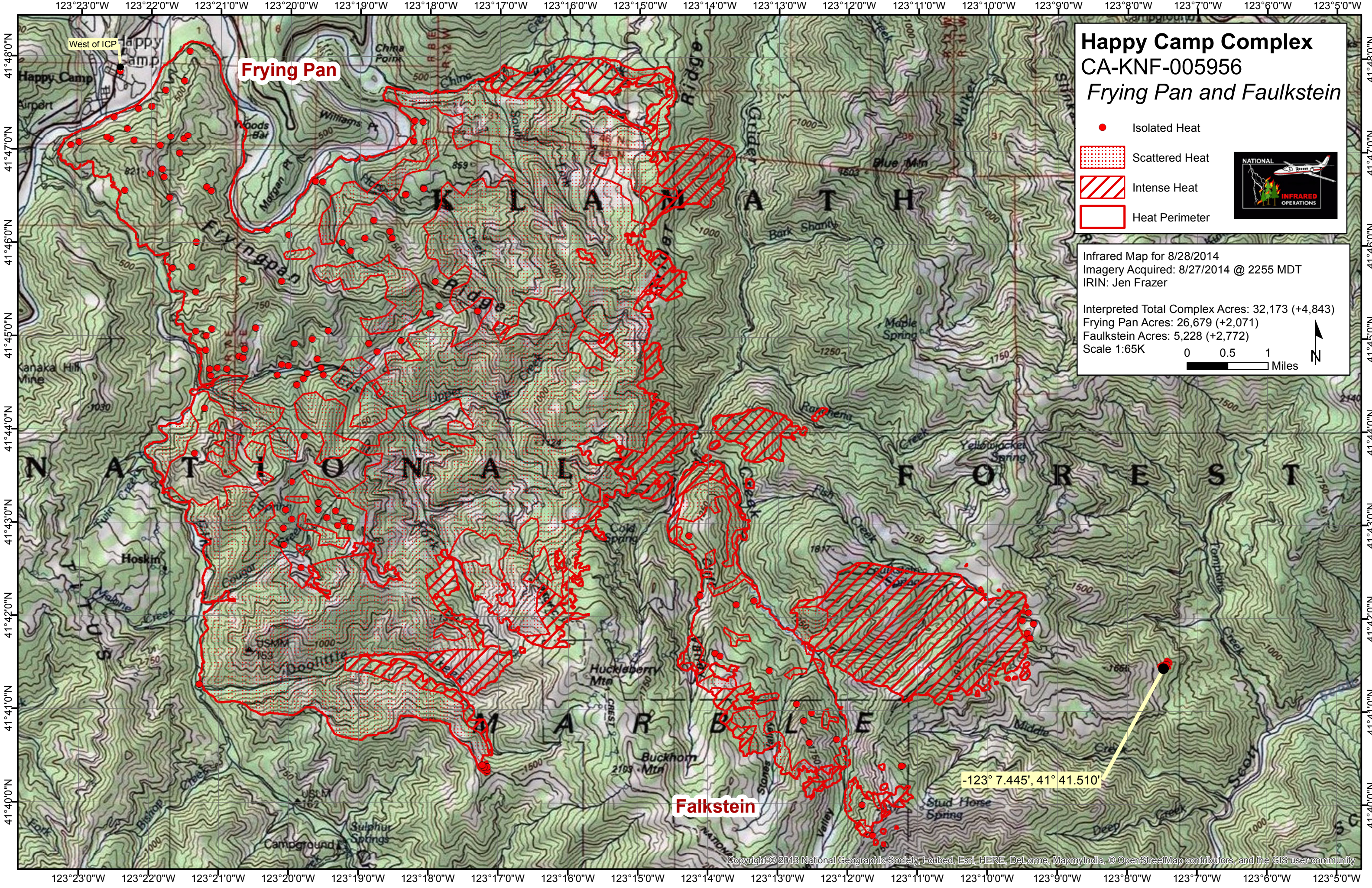
Interpreted Total Complex Acres: 32,173 (+4,843)  
Frying Pan Acres: 26,679 (+2,071)  
Faulkstein Acres: 5,228 (+2,772)  
Scale 1:65K

0 0.5 1 Miles



-123° 7.445', 41° 41.510'

**Falkstein**



# Happy Camp Complex CA-KNF-005956 *Frying Pan and Faulkstein*

- Isolated Heat
- Scattered Heat
- Intense Heat
- Heat Perimeter



Infrared Map for 8/28/2014  
 Imagery Acquired: 8/27/2014 @ 2255 MDT  
 IRIN: Jen Frazer

Interpreted Total Complex Acres: 32,173 (+4,843)  
 Frying Pan Acres: 26,679 (+2,071)  
 Faulkstein Acres: 5,228 (+2,772)  
 Scale 1:65K

0 0.5 1 Miles

-123° 7.445', 41° 41.510'

123°15'0"W

123°14'0"W

123°13'0"W

123°12'0"W

123°11'0"W

123°10'0"W

123°9'0"W

123°8'0"W

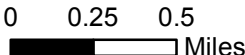

123°7'0"W

123°6'0"W






**Frying Pan**

Infrared Map for 8/28/2014  
 Imagery Acquired: 8/27/2014 @ 2255 MDT  
 IRIN: Jen Frazer

Interpreted Total Complex Acres: 32,173 (+4,843)  
 Frying Pan Acres: 26,679 (+2,071)  
 Faulkstein Acres: 5,228 (+2,772)  
 Scale 1:65K

**Happy Camp Complex**  
 CA-KNF-005956  
*Faulkstein*

-  Isolated Heat
  -  Scattered Heat
  -  Intense Heat
  -  Heat Perimeter
- 

41°44'0"N

41°43'0"N

41°42'0"N

41°41'0"N

41°40'0"N

41°44'0"N

41°43'0"N

41°42'0"N

41°41'0"N

41°40'0"N

-123° 7.445', 41° 41.510'

**Falkstein**

123°15'0"W

123°14'0"W

123°13'0"W

123°12'0"W

123°11'0"W

123°10'0"W

123°9'0"W

123°8'0"W

123°7'0"W

123°6'0"W

123°15'0"W

123°14'0"W

123°13'0"W

123°12'0"W

123°11'0"W

123°10'0"W

123°9'0"W

123°8'0"W

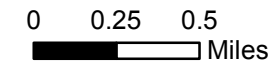
123°7'0"W

123°6'0"W

**Frying Pan**

Infrared Map for 8/28/2014  
 Imagery Acquired: 8/27/2014 @ 2255 MDT  
 IRIN: Jen Frazer

Interpreted Total Complex Acres: 32,173 (+4,843)  
 Frying Pan Acres: 26,679 (+2,071)  
 Faulkstein Acres: 5,228 (+2,772)  
 Scale 1:65K



# Happy Camp Complex CA-KNF-005956

## Faulkstein

- Isolated Heat
- Scattered Heat
- Intense Heat
- Heat Perimeter



41°44'0"N  
41°43'0"N  
41°42'0"N  
41°41'0"N  
41°40'0"N

41°44'0"N  
41°43'0"N  
41°42'0"N  
41°41'0"N  
41°40'0"N

**Falkstein**

-123° 7.445', 41° 41.510'

123°27'0"W

123°26'0"W



# Happy Camp Complex CA-KNF-005956 *Kemper*

- Isolated Heat
- Scattered Heat
- Intense Heat
- Heat Perimeter

41°56'0"N

41°56'0"N

-123° 25.923', 41° 55.744'

-123° 26.173', 41° 55.660'

41°55'0"N

41°55'0"N

Infrared Map for 8/28/2014  
Imagery Acquired: 8/27/2014 @ 2255 MDT  
IRIN: Jen Frazer

Interpreted Total Complex Acres: 32,173 (+4,843)

Scale 1:10K

0 0.125 0.25 Miles



Copyright © 2013 National Geographic, OpenStreetMap contributors, Mapbox, USDA, USGS, AEX, Getmapping, Aerogrid, IGN, IGP, swisstopo, and the GIS User Community

123°27'0"W

123°26'0"W



123°27'0"W

123°26'0"W



# Happy Camp Complex CA-KNF-005956 Kemper

- Isolated Heat
- Scattered Heat
- Intense Heat
- Heat Perimeter

41°56'0"N

41°56'0"N

-123° 25.923', 41° 55.744'

-123° 26.173', 41° 55.660'

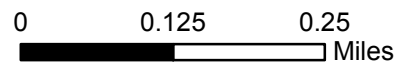
41°55'0"N

41°55'0"N

Infrared Map for 8/28/2014  
Imagery Acquired: 8/27/2014 @ 2255 MDT  
IRIN: Jen Frazer

Interpreted Total Complex Acres: 32,173 (+4,843)

Scale 1:10K



123°27'0"W

123°26'0"W