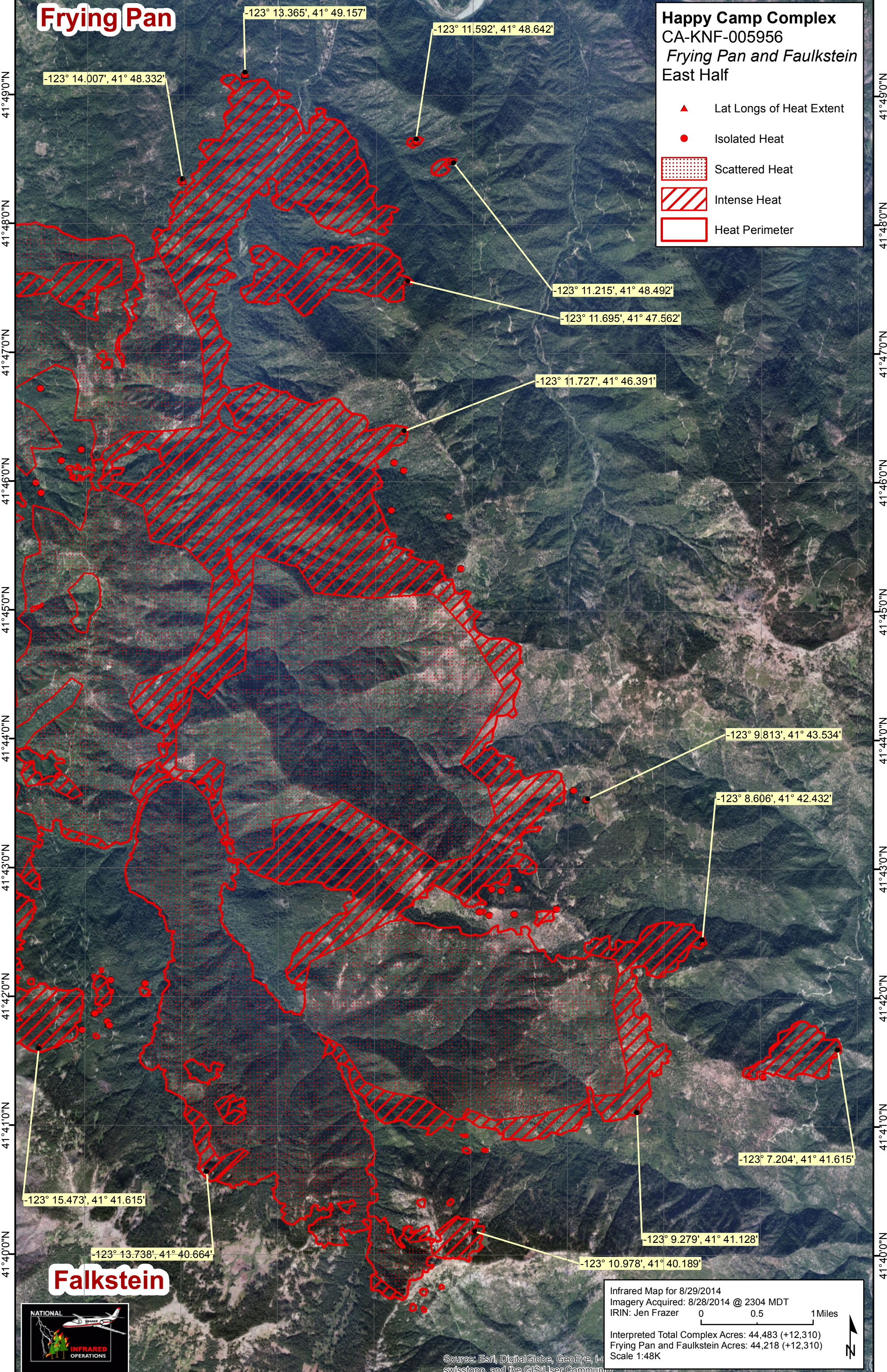


123°15'0"W 123°14'0"W 123°13'0"W 123°12'0"W 123°11'0"W 123°10'0"W 123°9'0"W 123°8'0"W 123°7'0"W

Frying Pan

Happy Camp Complex
CA-KNF-005956
Frying Pan and Faulkstein
East Half

- ▲ Lat Longs of Heat Extent
- Isolated Heat
- ▨ Scattered Heat
- ▧ Intense Heat
- ▭ Heat Perimeter



41°49'0"N
41°48'0"N
41°47'0"N
41°46'0"N
41°45'0"N
41°44'0"N
41°43'0"N
41°42'0"N
41°41'0"N
41°40'0"N

41°49'0"N
41°48'0"N
41°47'0"N
41°46'0"N
41°45'0"N
41°44'0"N
41°43'0"N
41°42'0"N
41°41'0"N
41°40'0"N

-123° 14.007', 41° 48.332'

-123° 13.365', 41° 49.157'

-123° 11.592', 41° 48.642'

-123° 11.215', 41° 48.492'

-123° 11.695', 41° 47.562'

-123° 11.727', 41° 46.391'

-123° 9.813', 41° 43.534'

-123° 8.606', 41° 42.432'

-123° 7.204', 41° 41.615'

-123° 15.473', 41° 41.615'

-123° 13.738', 41° 40.664'

-123° 10.978', 41° 40.189'

-123° 9.279', 41° 41.128'

Faulkstein



Infrared Map for 8/29/2014
Imagery Acquired: 8/28/2014 @ 2304 MDT
IRIN: Jen Frazer

0 0.5 1 Miles

Interpreted Total Complex Acres: 44,483 (+12,310)
Frying Pan and Faulkstein Acres: 44,218 (+12,310)
Scale 1:48K

Source: Esri, DigitalGlobe, GeoEye, IGN, swisstopo, and the GIS User Community

123°15'0"W 123°14'0"W 123°13'0"W 123°12'0"W 123°11'0"W 123°10'0"W 123°9'0"W 123°8'0"W 123°7'0"W