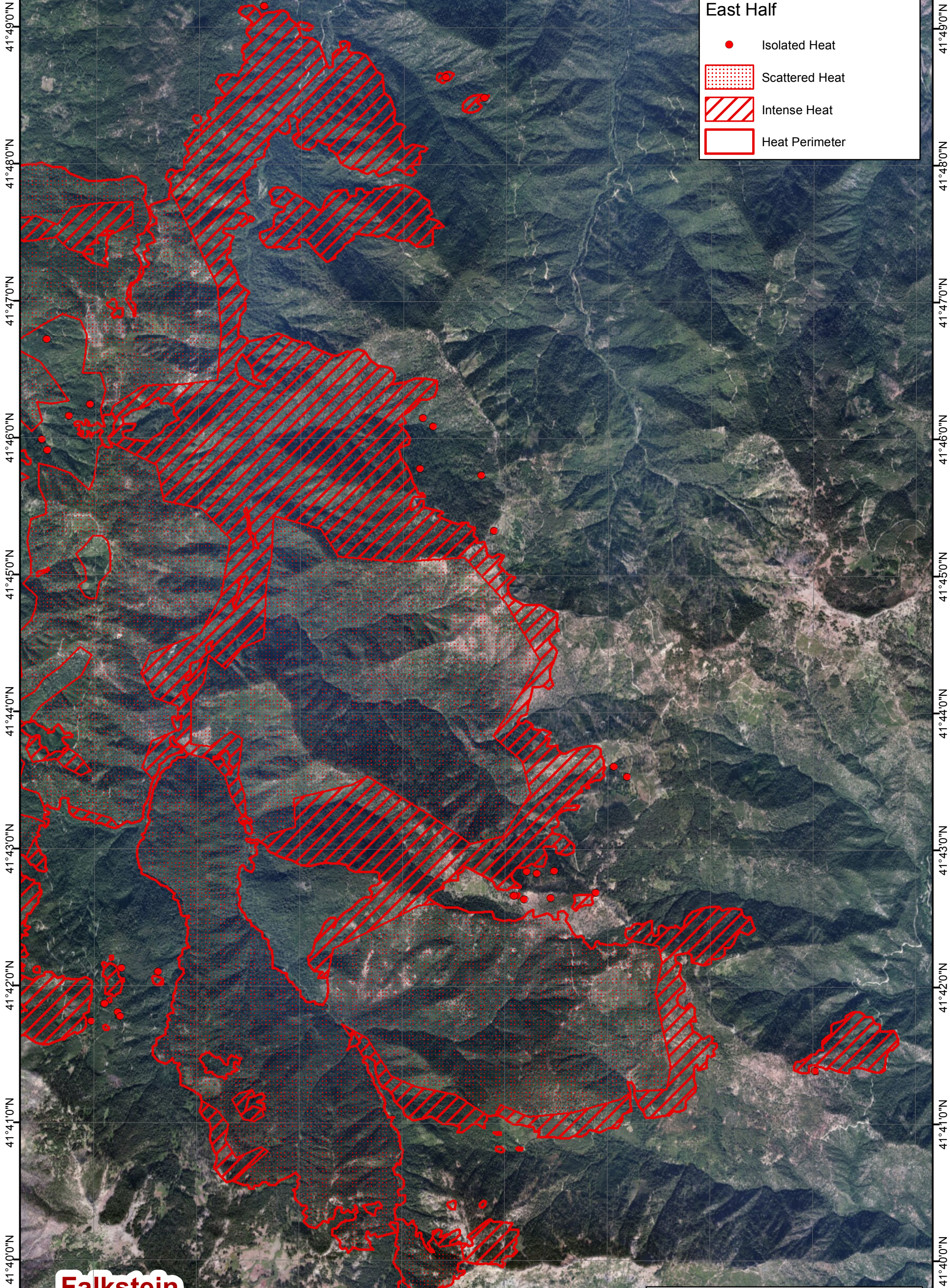


123°15'0"W 123°14'0"W 123°13'0"W 123°12'0"W 123°11'0"W 123°10'0"W 123°9'0"W 123°8'0"W 123°7'0"W

Frying Pan

Happy Camp Complex CA-KNF-005956 Frying Pan and Faulkstein East Half

- Isolated Heat
- Scattered Heat
- Intense Heat
- Heat Perimeter



41°49'0"N
41°48'0"N
41°47'0"N
41°46'0"N
41°45'0"N
41°44'0"N
41°43'0"N
41°42'0"N
41°41'0"N
41°40'0"N

41°49'0"N
41°48'0"N
41°47'0"N
41°46'0"N
41°45'0"N
41°44'0"N
41°43'0"N
41°42'0"N
41°41'0"N
41°40'0"N

Faulkstein



Infrared Map for 8/29/2014
 Imagery Acquired: 8/28/2014 @ 2304 MDT
 IRIN: Jen Frazer

0 0.5 1 Miles

Interpreted Total Complex Acres: 44,483 (+12,310)
 Frying Pan and Faulkstein Acres: 44,218 (+12,310)
 Scale 1:48K

Source: Esri, DigitalGlobe, GeoEye, IGN, swisstopo, and the GIS User Community

123°15'0"W 123°14'0"W 123°13'0"W 123°12'0"W 123°11'0"W 123°10'0"W 123°9'0"W 123°8'0"W 123°7'0"W