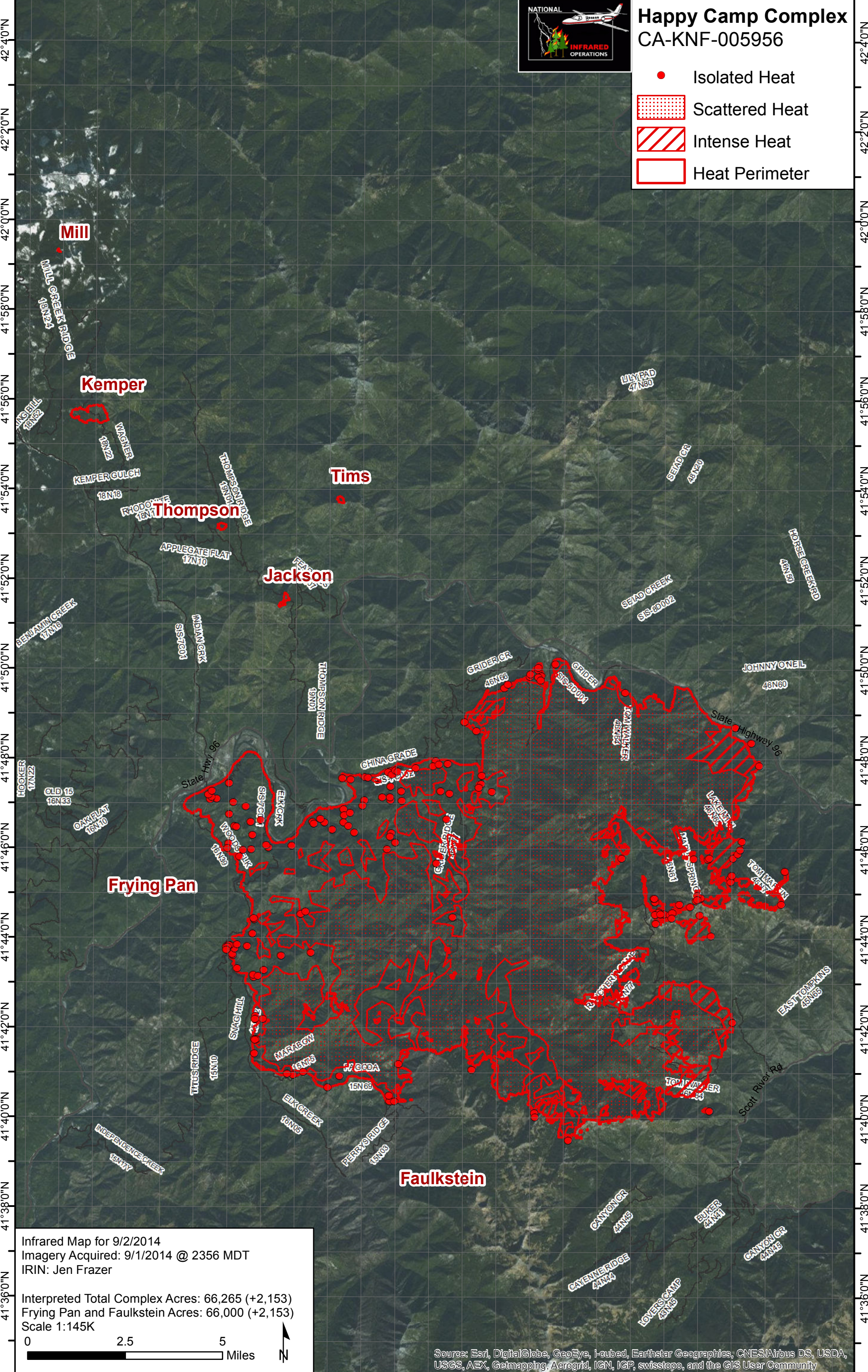


123°28'0"W 123°26'0"W 123°24'0"W 123°22'0"W 123°20'0"W 123°18'0"W 123°16'0"W 123°14'0"W 123°12'0"W 123°10'0"W 123°8'0"W 123°6'0"W 123°4'0"W



Happy Camp Complex CA-KNF-005956

- Isolated Heat
- ▨ Scattered Heat
- ▨ Intense Heat
- Heat Perimeter



Infrared Map for 9/2/2014
 Imagery Acquired: 9/1/2014 @ 2356 MDT
 IRIN: Jen Frazer

Interpreted Total Complex Acres: 66,265 (+2,153)
 Frying Pan and Faulkstein Acres: 66,000 (+2,153)
 Scale 1:145K

0 2.5 5 Miles

N

Source: Esri, DigitalGlobe, GeoEye, i-cubed, Earthstar Geographics, CNES/Airbus DS, USDA, USGS, AEX, Getmapping, Aerogrid, IGN, IGP, swisstopo, and the GIS User Community

123°28'0"W 123°26'0"W 123°24'0"W 123°22'0"W 123°20'0"W 123°18'0"W 123°16'0"W 123°14'0"W 123°12'0"W 123°10'0"W 123°8'0"W 123°6'0"W 123°4'0"W