

123°17'0"W 123°16'0"W 123°15'0"W 123°14'0"W 123°13'0"W 123°12'0"W 123°11'0"W 123°10'0"W 123°9'0"W 123°8'0"W 123°7'0"W

41°51'0"N
41°50'0"N
41°49'0"N
41°48'0"N
41°47'0"N

41°51'0"N
41°50'0"N
41°49'0"N
41°48'0"N
41°47'0"N

Happy Camp Complex
 CA-KNF-005956
Frying Pan and Faulkstein
 East Half 1 of 5

BreakType

- Isolated Heat
- ▨ Scattered Heat
- ▧ Intense Heat
- ▭ Heat Perimeter

<--> Sector
)) Division
 || Branch
 ● Zone

Div G

Div H

-123° 13.688', 41° 49.679'

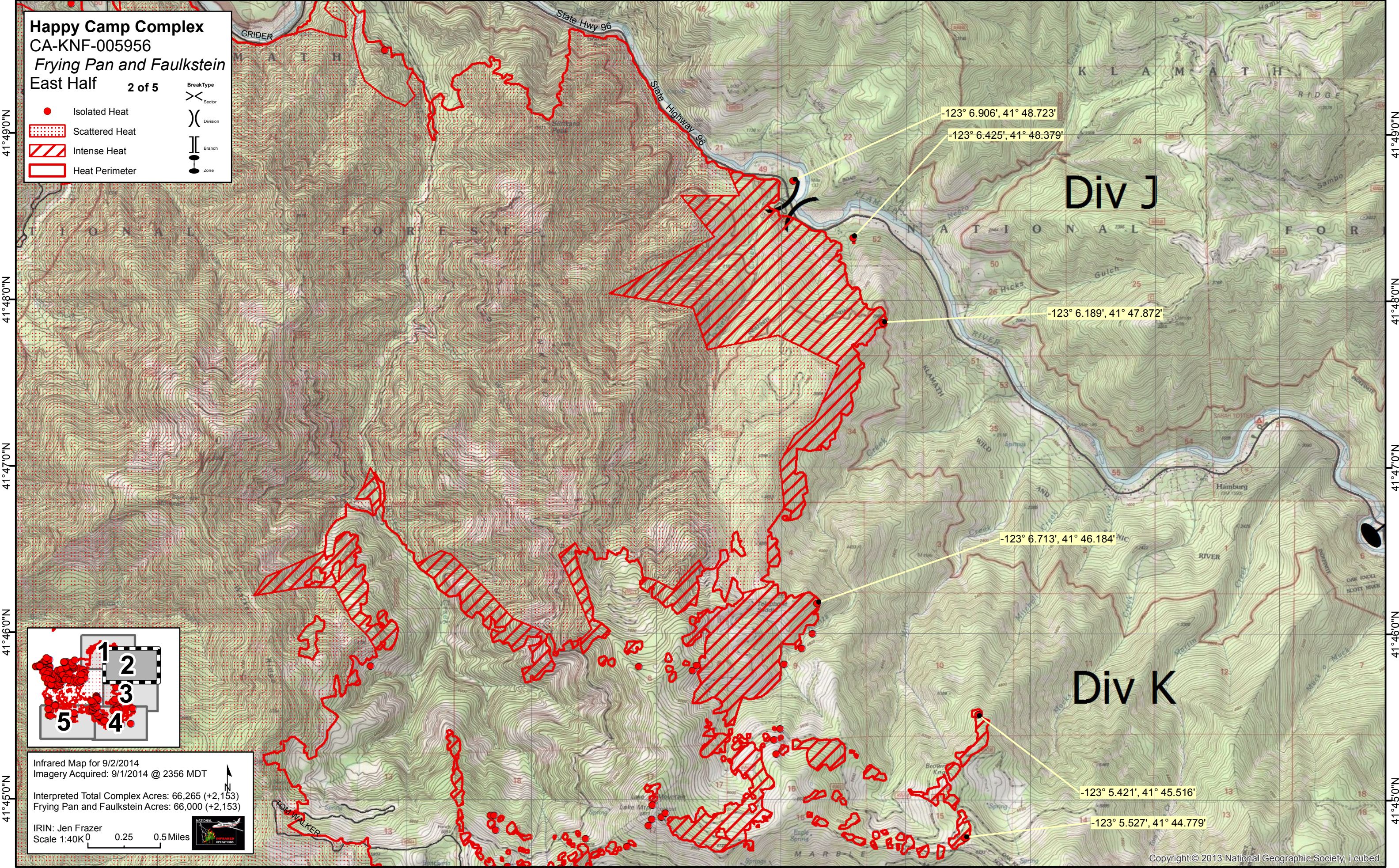
1 2
3 4
5

Infrared Map for 9/2/2014
 Imagery Acquired: 9/1/2014 @ 2356 MDT

Interpreted Total Complex Acres: 66,265 (+2,153)
 Frying Pan and Faulkstein Acres: 66,000 (+2,153)

IRIN: Jen Frazer
 Scale 1:40K 0 0.25 0.5 Miles

123°13'0"W 123°12'0"W 123°11'0"W 123°10'0"W 123°9'0"W 123°8'0"W 123°7'0"W 123°6'0"W 123°5'0"W 123°4'0"W 123°3'0"W



Happy Camp Complex
 CA-KNF-005956
Frying Pan and Faulkstein
 East Half 2 of 5

BreakType

- Isolated Heat
- ▨ Scattered Heat
- ▨ Intense Heat
- ▭ Heat Perimeter

Legend for BreakType:

- ✂ Sector
-) Division
- || Branch
- Zone

-123° 6.906', 41° 48.723'

-123° 6.425', 41° 48.379'

Div J

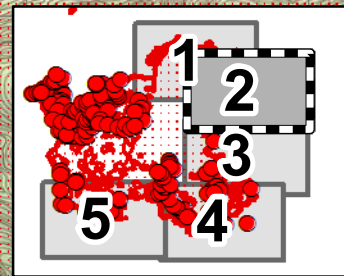
-123° 6.189', 41° 47.872'

-123° 6.713', 41° 46.184'

Div K

-123° 5.421', 41° 45.516'

-123° 5.527', 41° 44.779'



Infrared Map for 9/2/2014
 Imagery Acquired: 9/1/2014 @ 2356 MDT

Interpreted Total Complex Acres: 66,265 (+2,153)
 Frying Pan and Faulkstein Acres: 66,000 (+2,153)

IRIN: Jen Frazer
 Scale 1:40K

0 0.25 0.5 Miles

123°13'0"W 123°12'0"W 123°11'0"W 123°10'0"W 123°9'0"W 123°8'0"W 123°7'0"W 123°6'0"W 123°5'0"W 123°4'0"W 123°3'0"W

41°49'0"N
41°48'0"N
41°47'0"N
41°46'0"N
41°45'0"N

41°49'0"N
41°48'0"N
41°47'0"N
41°46'0"N
41°45'0"N

123°13'0"W 123°12'0"W 123°11'0"W 123°10'0"W 123°9'0"W 123°8'0"W 123°7'0"W 123°6'0"W 123°5'0"W 123°4'0"W 123°3'0"W

41°46'0"N
41°45'0"N
41°44'0"N
41°43'0"N
41°42'0"N

41°46'0"N
41°45'0"N
41°44'0"N
41°43'0"N
41°42'0"N

Happy Camp Complex
CA-KNF-005956
Frying Pan and Faulkstein
East Half 3 of 5

BreakType

- Isolated Heat
- ▨ Scattered Heat
- ▧ Intense Heat
- ▭ Heat Perimeter

<> Sector
) Division
 || Branch
 ● Zone

Div K

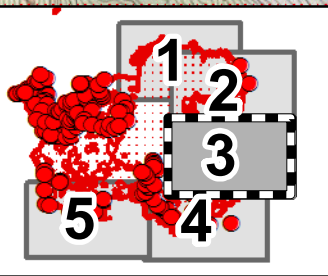
-123° 5.421', 41° 45.516'

-123° 5.527', 41° 44.779'

-123° 7.618', 41° 44.067'

Div L

-123° 6.989', 41° 42.146'



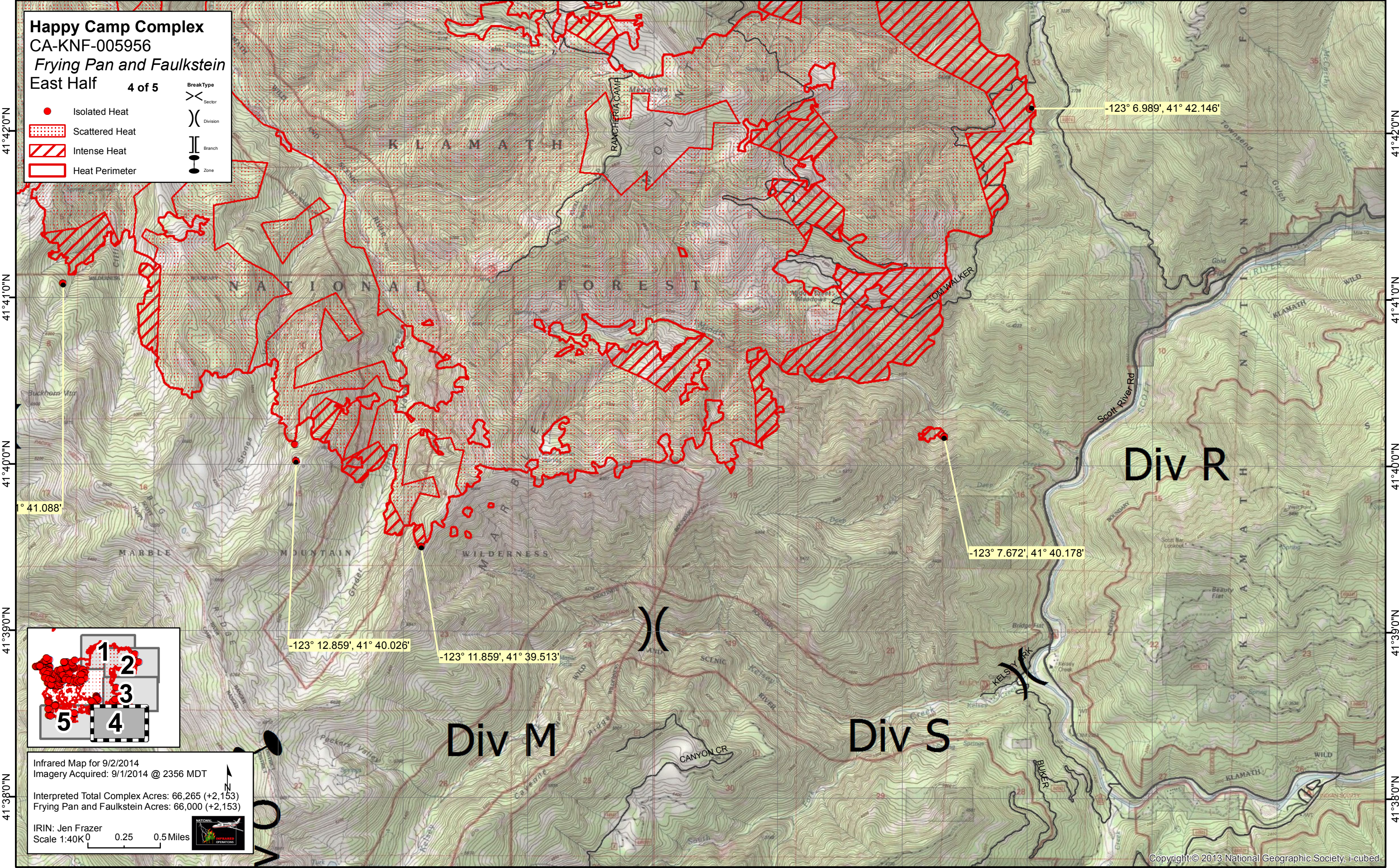
Infrared Map for 9/2/2014
Imagery Acquired: 9/1/2014 @ 2356 MDT

Interpreted Total Complex Acres: 66,265 (+2,153)
Frying Pan and Faulkstein Acres: 66,000 (+2,153)

IRIN: Jen Frazer
Scale 1:40K 0 0.25 0.5 Miles

123°13'0"W 123°12'0"W 123°11'0"W 123°10'0"W 123°9'0"W 123°8'0"W 123°7'0"W 123°6'0"W 123°5'0"W 123°4'0"W 123°3'0"W

123°15'0"W 123°14'0"W 123°13'0"W 123°12'0"W 123°11'0"W 123°10'0"W 123°9'0"W 123°8'0"W 123°7'0"W 123°6'0"W 123°5'0"W



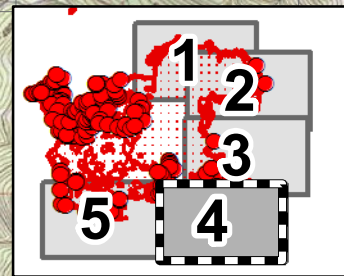
Happy Camp Complex
 CA-KNF-005956
Frying Pan and Faulkstein
 East Half 4 of 5

BreakType

- Isolated Heat
- ▨ Scattered Heat
- ▨ Intense Heat
- ▭ Heat Perimeter

Legend for BreakType:

- ×× Sector
-) Division
- || Branch
- Zone



Infrared Map for 9/2/2014
 Imagery Acquired: 9/1/2014 @ 2356 MDT

Interpreted Total Complex Acres: 66,265 (+2,153)
 Frying Pan and Faulkstein Acres: 66,000 (+2,153)

IRIN: Jen Frazer
 Scale 1:40K

0 0.25 0.5 Miles

41°42'0"N
41°41'0"N
41°40'0"N
41°39'0"N
41°38'0"N

41°42'0"N
41°41'0"N
41°40'0"N
41°39'0"N
41°38'0"N

-123° 6.989', 41° 42.146'

-123° 7.672', 41° 40.178'

-123° 12.859', 41° 40.026'

-123° 11.859', 41° 39.513'

123°23'0"W 123°22'0"W 123°21'0"W 123°20'0"W 123°19'0"W 123°18'0"W 123°17'0"W 123°16'0"W 123°15'0"W 123°14'0"W 123°13'0"W

Happy Camp Complex
 CA-KNF-005956
Frying Pan and Faulkstein
 East Half 5 of 5

BreakType

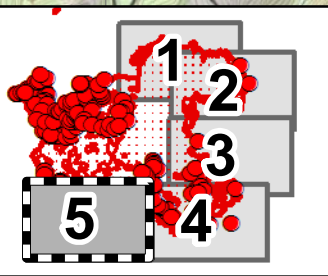
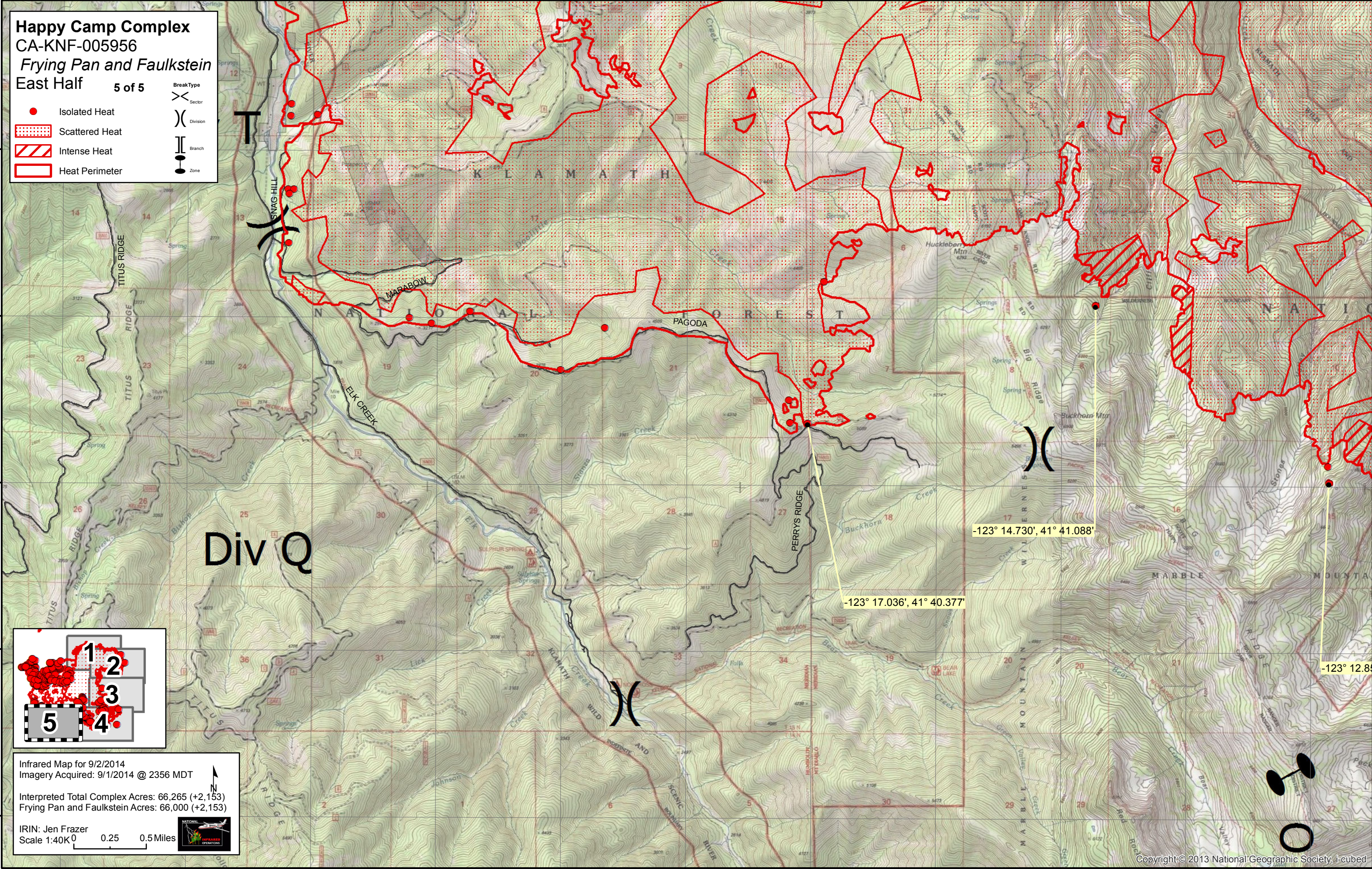
- Isolated Heat
- ▨ Scattered Heat
- ▨ Intense Heat
- ▭ Heat Perimeter

Legend for BreakType:

- ✂ Sector
- ⌋ Division
- ┆ Branch
- Zone

41°42'0"N
41°41'0"N
41°40'0"N
41°39'0"N
41°38'0"N

41°42'0"N
41°41'0"N
41°40'0"N
41°39'0"N
41°38'0"N



Infrared Map for 9/2/2014
 Imagery Acquired: 9/1/2014 @ 2356 MDT

Interpreted Total Complex Acres: 66,265 (+2,153)
 Frying Pan and Faulkstein Acres: 66,000 (+2,153)

IRIN: Jen Frazer
 Scale 1:40K

0 0.25 0.5 Miles