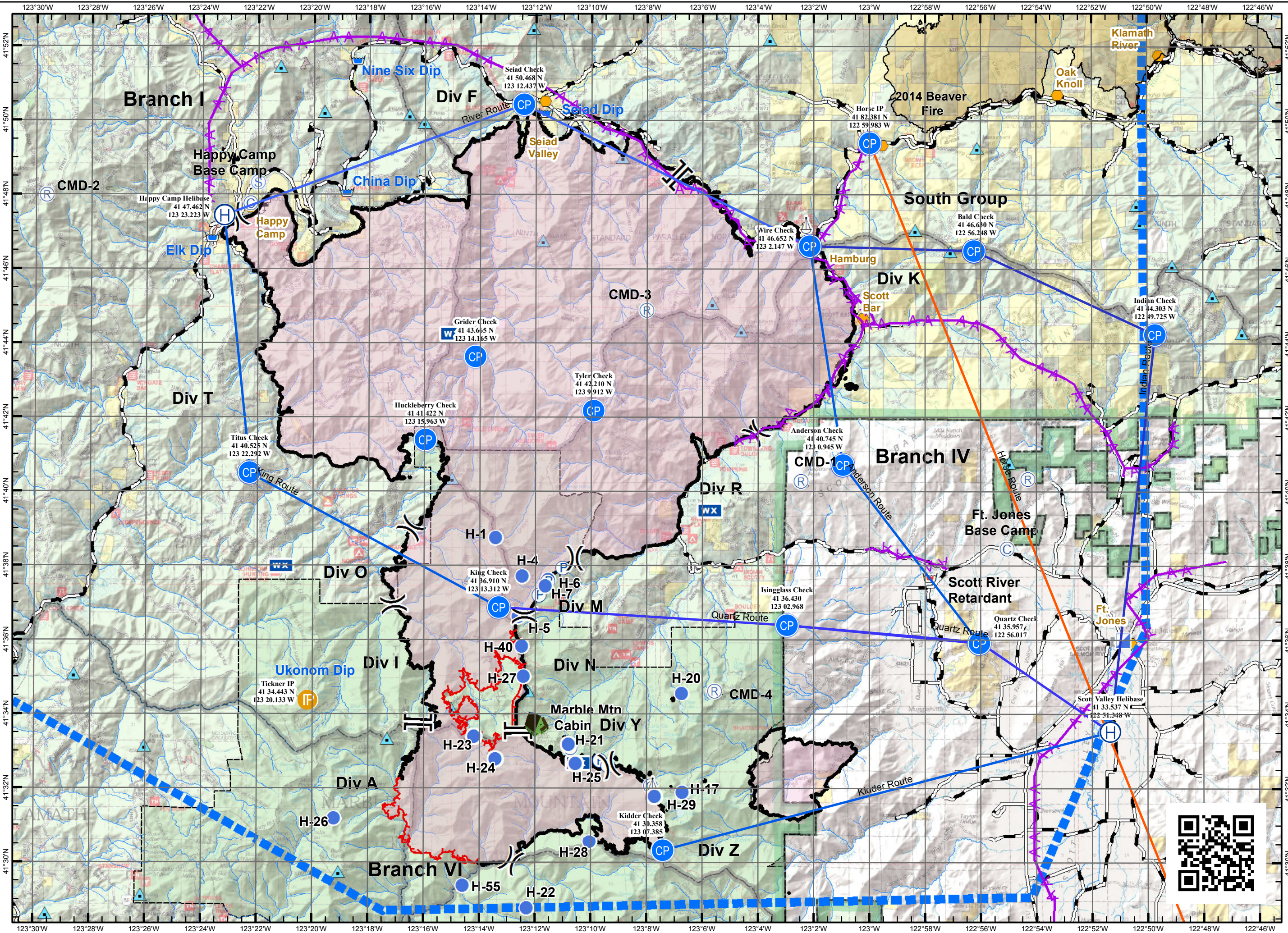
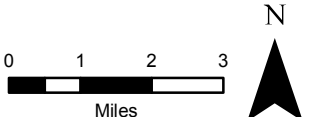


Air Operations Happy Camp Complex

CA-KNF-005956
09/26/2014
0600



- FirePolygon
- Uncontrolled Fire Edge
- Completed Line
- Powerlines
- Branch Break
- Division Break
- ICP
- Camp
- Staging Area
- Drop Point
- Pump
- Repeater
- RAWS
- Helispot
- Sling Site
- Retardant/Mud Pit
- Dip Site
- Mtn_pt
- Town_pt
- Pacific Crest Trail
- State Hwy/County Rd
- Marble Mtn Cabin
- ProclaimedForest
- RangerDistrict
- Wilderness
- Pvt. Land w/in Forest Bndry
- TFR Boundary
- Check Point
- Initial Point
- Helibase
- Helicopter Routes
- Tanker Routes



CA-KNF-005956 HAPPY CAMP COMPLEX PILOT LOCATION INFORMATION

Version: 09/20/2014 NAD83 UTM Zone 10N

Label	Latitude	Longitude	Elev.*	IGE/OGE	Remarks
ICP	N41° 36.240'	W122° 50.487'			
Fort Jones Base Camp	N41° 38.507'	W122° 55.058'			
Happy Camp Base Camp	N41° 47.807'	W123° 22.272'			
H-1	N41° 38.809'	W123° 13.432'			
H-17	N41° 31.941'	W123° 6.719'			
H-19	N41° 26.815'	W123° 11.374'			
H-20	N41° 34.616'	W123° 6.742'			
H-21	N41° 33.221'	W123° 10.79'	5850'		Fry + Pan; Type II
H-22	N41° 28.81'	W123° 12.302'			
H-23	N41° 33.426'	W123° 14.188'	6500'		Whiskey; Type III Only
H-24	N41° 32.824'	W123° 13.424'	5922'		
H-25	N41° 32.708'	W123° 10.55'	6850'		
H-26	N41° 21.092'	W123° 13.216'			
H-27	N41° 35.063	W123° 12.428	6570'		
H-28	N41° 31.416'	W123° 1.811'			
H-29	N41° 31.822	W123° 7.713'	6850'		
H-4	N41° 37.756'	W123° 12.46'			
H-40	N41° 35.88'	W123° 12.48'			
H-5	N41° 36.668'	W123° 12.608'			
H-50	N41° 27.587'	W123° 17.858'			
H-55	N41° 29.424'	W123° 14.592'			
H-6	N41° 37.669'	W123° 11.526'			
H-60	N41° 25.718'	W123° 22.719'			
H-7	N41° 37.493'	W123° 11.646'			
El Capitan Helispot	N41° 52.896'	W123° 37.758'			
Scott River Retardant	N41° 37.724'	W122° 57.826'			
China Dip	N41° 48.102'	W123° 18.826'			
Elk Dip	N41° 46.880'	W123° 23.657'			
Indian Dip	N41° 53.840'	W123° 24.364'			
Nine Six Dip	N41° 51.651'	W123° 18.447'			
Seiad Dip	N41° 50.254'	W123° 11.658'			
Ukonom Dip	N41° 34.818'	W123° 21.402'			
Staging Area	N41° 48.356'	W123° 21.998'			
Scott Valley Helibase	N41° 33.537'	W122° 51.348'			
Horse IP	N41° 49.428'	W122° 59.983'			
Weed Airport	N41° 28.618'	W122° 27.198'			
Red IP	N41° 55.793'	W123° 11.042'			
Tickner IP	N41° 34.395'	W123° 20.133'			
Indian Check	N41° 44.303'	W122° 49.725'			
Bald Check	N41° 46.630'	W122° 56.248'			
Wire Check	N41° 46.652'	W123° 02.147'			
Seiad Check	N41° 50.468'	W123° 12.437'			
Happy Camp Helibase	N41° 47.462'	W123° 23.223'			
Titus Check	N41° 40.525'	W123° 22.292'			
King Check	N41° 36.910'	W123° 13.312'			
Buker Check	N41° 38.007'	W123° 06.318'			
Scott Check	N41° 37.695'	W122° 57.842'			
Anderson Check	N41° 40.745'	W123° 00.945'			
Tyler Check	N41° 42.210'	W123° 09.912'			
Grider Check	N41° 43.665'	W123° 14.165'			
Huckleberry Check	N41° 41.422'	W123° 15.963'			
Shackleford Check	N41° 35.592'	W122° 59.755'			
Mill Creek Check	N41° 33.640'	W122° 59.177'			
Isingglass Check	N41° 36.430'	W 123° 02.968'			
Quartz Check	N 41° 35.957'	W 122° 56.017'			
Kidder Check	N 41° 30.358'	W 123° 07.385'			

* Approximated using topographic map.