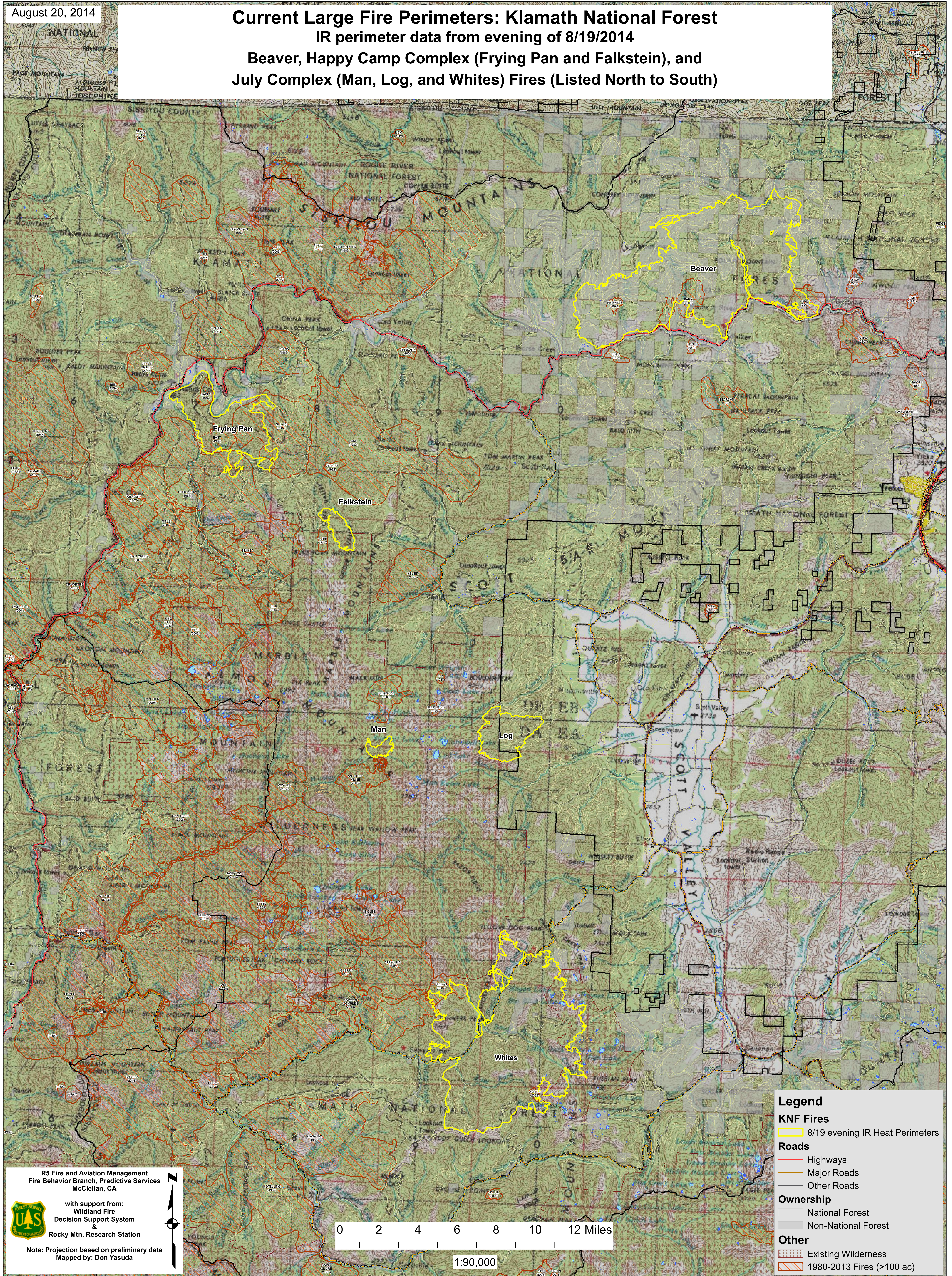


August 20, 2014

# Current Large Fire Perimeters: Klamath National Forest

IR perimeter data from evening of 8/19/2014

## Beaver, Happy Camp Complex (Frying Pan and Falkstein), and July Complex (Man, Log, and Whites) Fires (Listed North to South)



R5 Fire and Aviation Management  
Fire Behavior Branch, Predictive Services  
McClellan, CA

with support from:  
Wildland Fire  
Decision Support System  
&  
Rocky Mtn. Research Station

Note: Projection based on preliminary data  
Mapped by: Don Yasuda

**Legend**

**KNF Fires**  
8/19 evening IR Heat Perimeters

**Roads**  
Highways  
Major Roads  
Other Roads

**Ownership**  
National Forest  
Non-National Forest

**Other**  
Existing Wilderness  
1980-2013 Fires (>100 ac)

0 2 4 6 8 10 12 Miles  
1:90,000