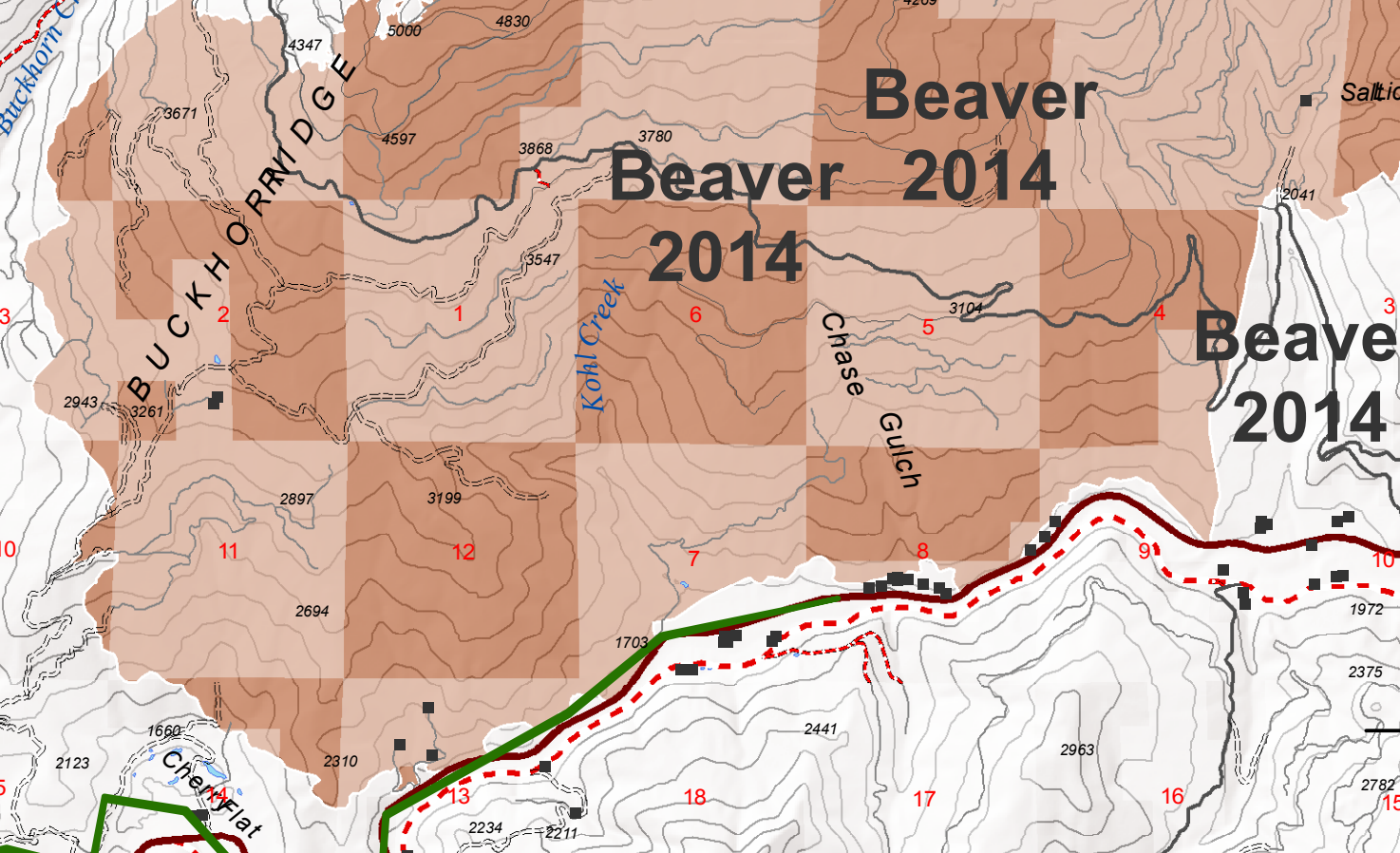
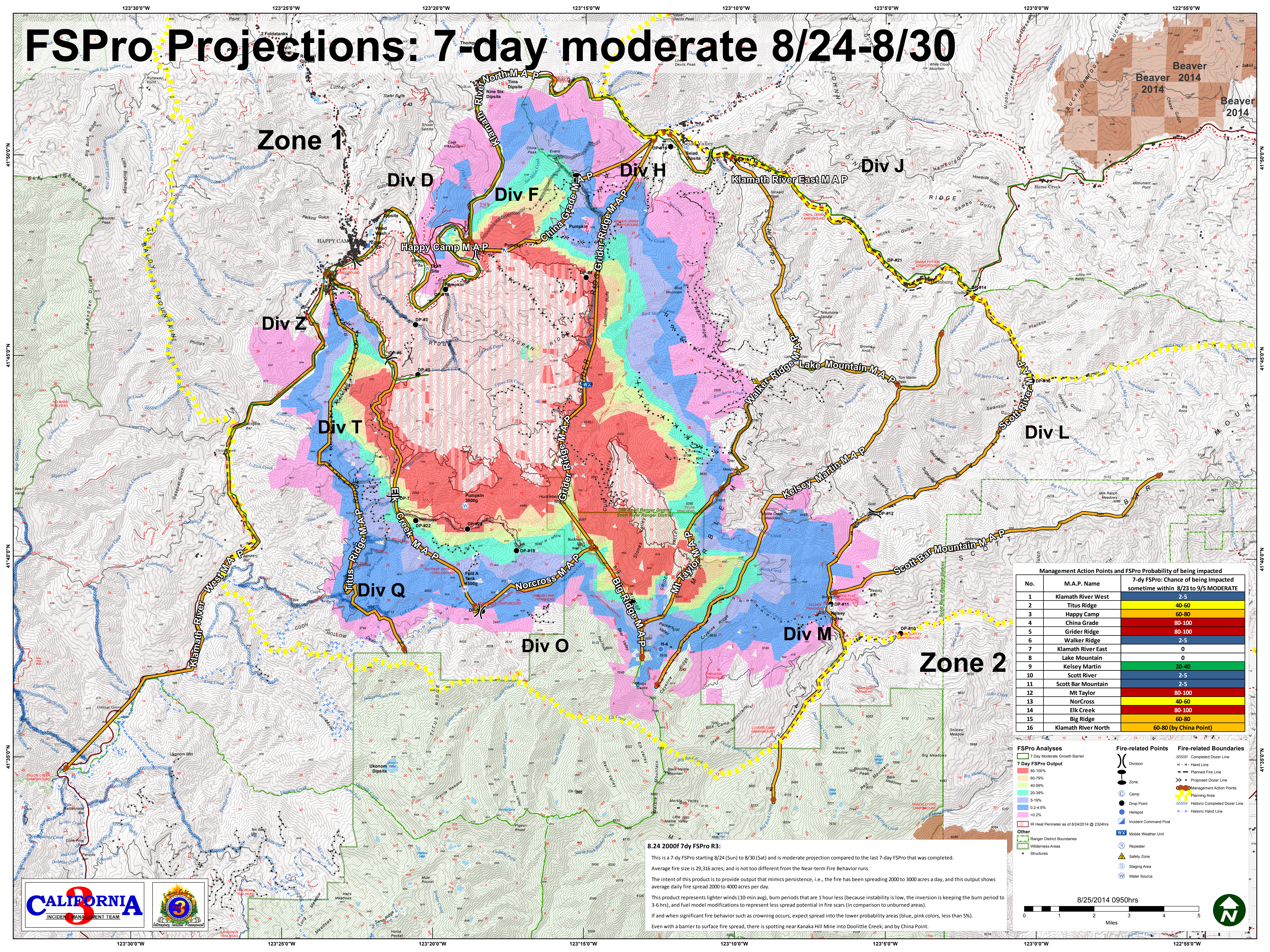


FSPro Projections: 7-day moderate 8/24-8/30



Management Action Points and FSPro Probability of being impacted

No.	M.A.P. Name	7-dy FSPro: Chance of being Impacted sometime within 8/23 to 9/5 MODERATE
1	Klamath River West	2-5
2	Titus Ridge	40-60
3	Happy Camp	60-80
4	China Grade	80-100
5	Grider Ridge	80-100
6	Walker Ridge	2-5
7	Klamath River East	0
8	Lake Mountain	0
9	Kelsey Martin	20-40
10	Scott River	2-5
11	Scott Bar Mountain	2-5
12	Mt Taylor	80-100
13	NorCross	40-60
14	Elk Creek	80-100
15	Big Ridge	60-80
16	Klamath River North	60-80 (by China Point)

FSPro Analyses

- 7 Day Moderate Growth Barrier
- 7 Day FSPro Output
- 80-100%
- 60-79%
- 40-59%
- 20-39%
- 5-19%
- 0.2-4.9%
- <0.2%

Other

- Ranger District Boundaries
- Wilderness Areas

Fire-related Points

- Division
- Zone
- Camp
- Drop Point
- Helipad
- Incident Command Post
- Mobile Weather Unit
- Repeater
- Safety Zone
- Staging Area
- Water Source

Fire-related Boundaries

- Completed Dozer Line
- Hand Line
- Planned Fire Line
- Proposed Dozer Line
- Management Action Points
- Planning Area
- Historic Completed Dozer Line
- Historic Hand Line

8.24 2000f 7dy FSPro R3:

This is a 7-dy FSPro starting 8/24 (Sun) to 8/30 (Sat) and is moderate projection compared to the last 7-day FSPro that was completed. Average fire size is 29,316 acres; and is not too different from the Near-term Fire Behavior runs.

The intent of this product is to provide output that mimics persistence, i.e., the fire has been spreading 2000 to 3000 acres a day, and this output shows average daily fire spread 2000 to 4000 acres per day.

This product represents lighter winds (10-min avg), burn periods that are 1 hour less (because instability is low, the inversion is keeping the burn period to 3-6 hrs), and fuel model modifications to represent less spread potential in fire scars (in comparison to unburned areas).

If and when significant fire behavior such as crowning occurs, expect spread into the lower probability areas (blue, pink colors, less than 5%).

Even with a barrier to surface fire spread, there is spotting near Kanaka Hill Mine into Doolittle Creek; and by China Point.

