

1	Klamath River W
2	Titus Ridge
3	Happy Camp
4	China Grade
5	Grider Ridge
6	Walker Ridge
7	Klamath River East
8	Lake Mountain
9	Kelsey-Martin (NEW)
10	Scott River
11	Scott Bar Mountain
12	Mt. Taylor
13	Norcross
14	Elk Creek
15	Big Ridge
16	KlamathRiverNorth

Happy Camp Complex Fire - Management Action Point 1: Klamath River West

Condition:

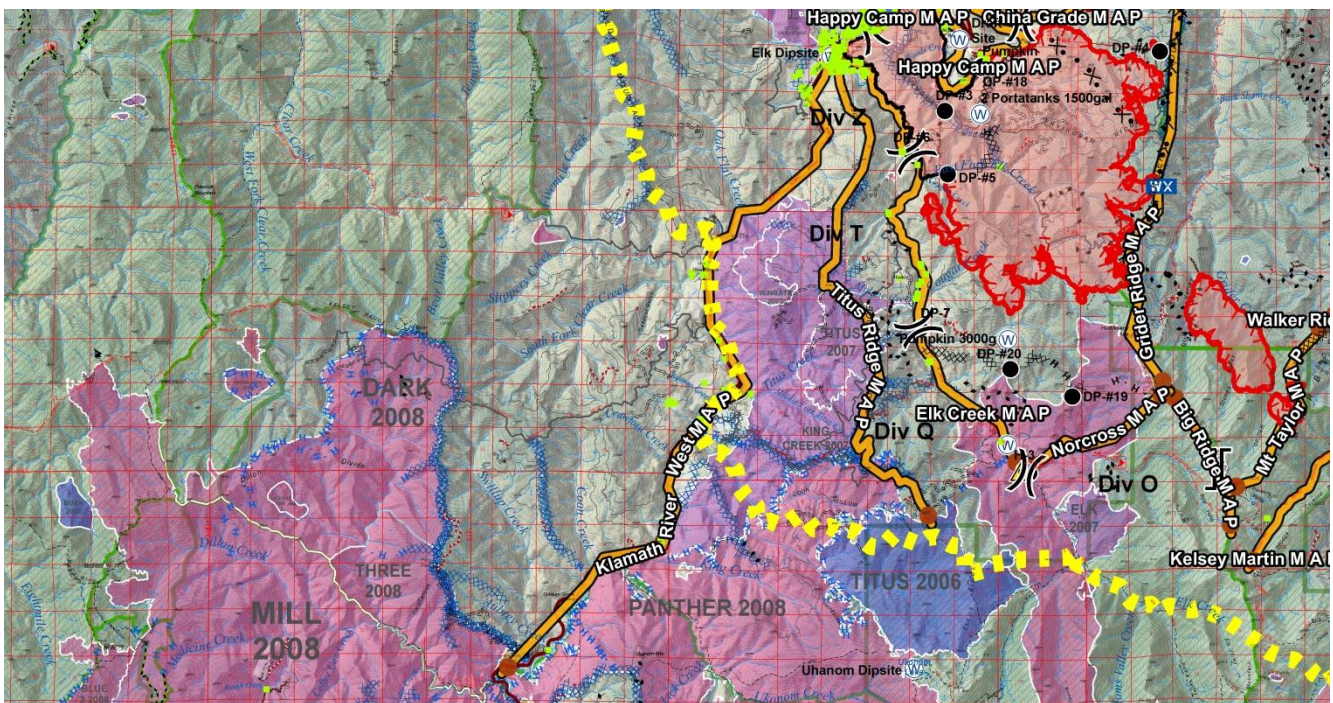
The fire has crossed the main stem of Elk Creek (MAP 17) or is likely to be crossed.

Location:

West of the fire's current perimeter
The Klamath River from Happy Camp west to Dillon Creek Campground.

Management Intent:

The intent of this MAP is to be a contingency plan if the fire were to cross or likely to cross MAP 14 – Main Stem of Elk Creek. Titus Ridge (MAP 2) is the main contingency; however, the crossing of Elk Creek would trigger action taken for the Klamath River West MAP. The intent of the Klamath River West MAP would be to provide protection to structures and infrastructure while limiting impacts to natural and cultural resources by utilizing direct, indirect and point protection tactics. Numerous structures exist along the Klamath River Corridor and Curly Jack areas.



Suggested Actions:

Extinguish any spot fires or slop overs as quickly as possible, and provide point protection on structures and infrastructure.

Scout and identify best line construction options on identified ridgelines, road system and trail systems. Begin indirect line construction to keep fire within identified MAP. Consult with a READ for line construction options.

Conduct strategic burning operations to secure the line and promote low intensity fire
Coordinate with appropriate agencies on structure protection and any identified needs for evacuation.

Values to Protect:

Structures and infrastructure mainly along the Klamath River Corridor.

Wild and Scenic Klamath River and Scenic Byway Highway 96

Domestic Watershed to the greater Happy Camp/Elk Creek areas.

Increased impacts to recreational opportunities and closures

Impacts to alternative ingress and egress routes for the community and firefighters

Spotted owl cores and habitat

Habitat for sensitive and endangered aquatic species.

Numerous cultural sites; identified by Resource Advisors.

Probability of Success:

High.

The Klamath River and Highway 96 serve as a barrier to fire spread. Spotting may occur; however, is a low probability and resources are available to respond to any identified spotting.

Resources:

Resource needs will be determined by the IMT.

Consequences of Not Taking Action:

A much larger and more expensive fire

Potential for damage to homes, infrastructure and private property.

Impacts to natural and cultural resources; including threatened and endangered species.

Impacts on recreational opportunities and major travel routes.

Notifications:

Agency Administrator

Forest fire duty officer

Resource advisors

Siskiyou Sheriff

Red Cross

California Highway Patrol

Office of Emergency Services

Community and tribal liaison

Community of Happy Camp and surrounding area

Date Each Action		Rationale/Comment for items not completed or completed.
Initiated	Completed:	
1.		
2.		
3.		
4.		
5.		
6.		
7.		
8.		
9.		
10.		
11.		

Happy Camp Complex Fire - Management Action Point 2: Titus Ridge

Condition:

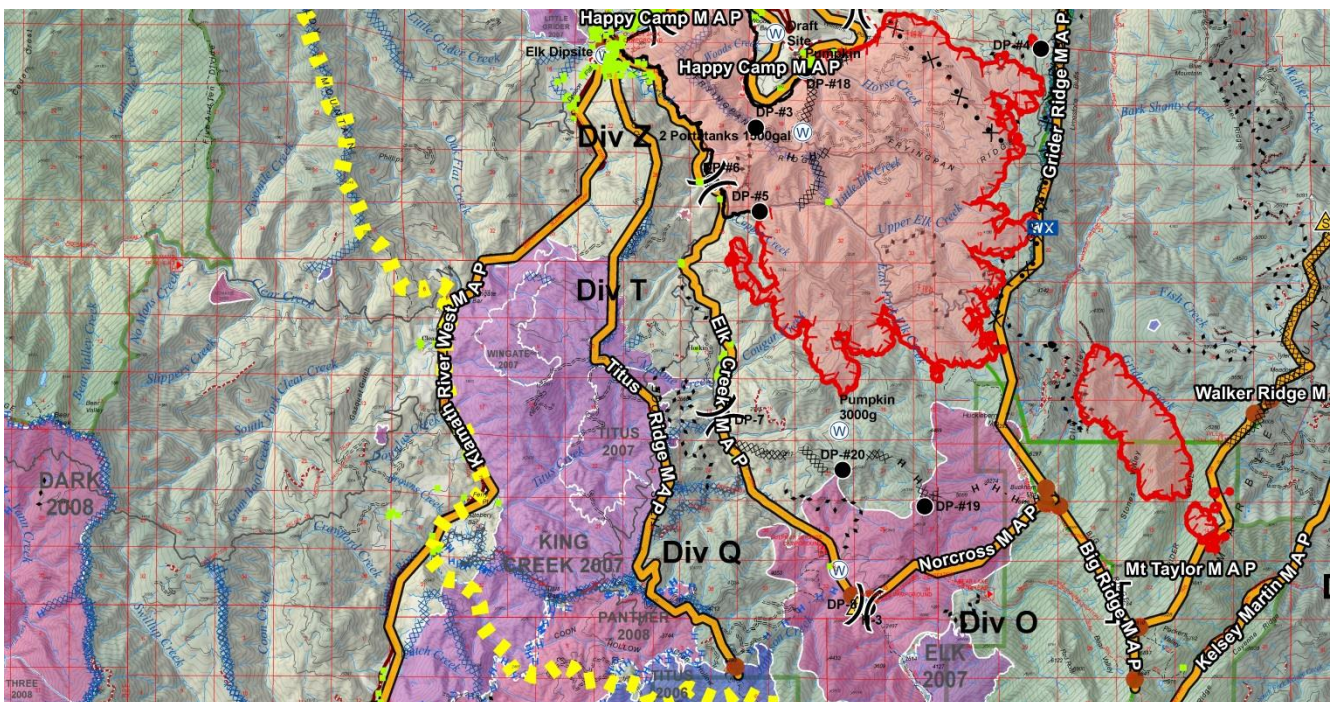
The fire has crossed the main stem of Elk Creek (MAP 17) or is likely to be crossed.

Location:

West of the fire’s current perimeter
Titus and Kanaka Ridge from the Klamath River south to Johnson Hunting Grounds.

Management Intent:

The intent of this MAP is to be a contingency plan if the fire were to cross or likely to cross MAP 14 – Main Stem of Elk Creek. The intent of the Titus Ridge MAP would be to keep the fire from going over the ridge and into additional structures and infrastructure along the Klamath River.



Suggested Actions:

- Extinguish any spot fires or slop overs as quickly as possible, and provide point protection on structures and infrastructure; particularly along Elk Creek.
- Scout and identify best line construction options on identified ridgelines, road system and trail systems. Begin indirect line construction to keep fire within identified MAP. Coordinate with READ on suggested line construction.
- Conduct strategic burning operations to secure the line and promote low intensity fire
- Coordinate with appropriate agencies on structure protection and any identified needs for evacuation.

Values to Protect:

Structures and infrastructure mainly along the Elk Creek Road System, Norcross Campground and Sulfer Springs Campground.
Domestic Watershed to the greater Happy Camp/Elk Creek areas.
Increased impacts to recreational opportunities and closures
Impacts to alternative ingress and egress routes for the community and firefighters
Spotted owl cores and habitat
Habitat for sensitive and endangered aquatic species.
Numerous cultural sites; identified by Resource Advisors.

Probability of Success:

Moderate.
Titus and Kanaka ridge systems have some dozer line and historical fires that will assist with fire suppression. Cultural concerns may limit additional line construction on the ridge system.

Resources:

Resource needs will be determined by the IMT.

Consequences of Not Taking Action:

A much larger and more expensive fire
Potential for damage to homes, infrastructure and private property.
Impacts to domestic watershed to Elk Creek and Happy Camp residences.
Impacts to natural and cultural resources; including threatened and endangered species and tribal cultural area.
Impacts on recreational opportunities and major travel routes.

Notifications:

Agency Administrator
Forest fire duty officer
Resource advisors
Siskiyou Sheriff
Red Cross
California Highway Patrol
Office of Emergency Services
Community and tribal liaison
Community of Happy Camp and surrounding area

Date Each Action Initiated	Completed:	Rationale/Comment for items not completed or completed.
1.		
2.		
3.		
4.		
5.		
6.		
7.		
8.		
9.		
10.		
11.		

Happy Camp Complex Fire - Management Action Point 3: Happy Camp

Condition:

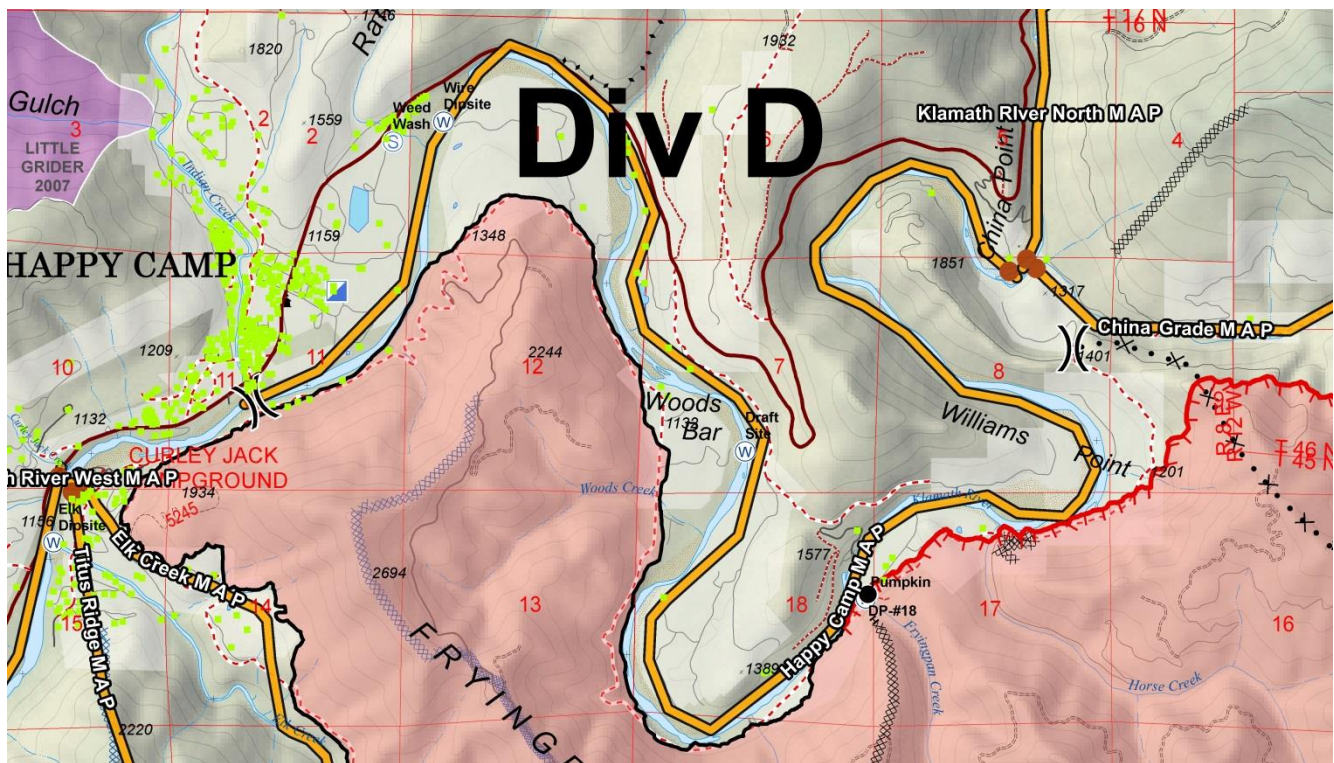
The fire has already reached this MAP. Therefore, actions underway are described below.

Location:

North of the fire’s current perimeter
The Klamath River from Elk Creek east to China Point

Management Intent:

The intent of this MAP is to continue as a primary line to protect structures along China Grade road and in the town of Happy Camp. In addition, this MAP serves as a barrier for fire spotting and spreading north of the Klamath River which would affect additional structures and infrastructure along with impacts to Highway 96.



Suggested Actions:

- Extinguish any spot fires or slop overs as quickly as possible, and provide point protection on structures and infrastructure.
- Conduct strategic burning operations to secure the line and promote low intensity fire
- Coordinate with appropriate agencies on structure protection and any identified needs for evacuation.

Values to Protect:

Structures and infrastructure mainly along the Klamath River Corridor.
Wild and Scenic Klamath River and Scenic Byway Highway 96
Potential damage to high valued NEPA projects (timber sales and fuels reduction projects – Thom Seider Project).
Increased impacts to recreational opportunities and closures
Impacts to alternative ingress and egress routes for the community and firefighters
Spotted owl cores and habitat
Habitat for sensitive and endangered aquatic species.
Numerous cultural sites; identified by Resource Advisors.

Probability of Success:

High.
The Klamath River and Highway 96 serve as a barrier to fire spread. Spotting may occur; however, is a low probability and resources are available to respond to any identified spotting.

Resources:

Resource needs will be determined by the IMT.

Consequences of Not Taking Action:

A much larger and more expensive fire
Potential for damage to homes, infrastructure and private property.
NEPA projects (Thom Seider Timber and Fuels Reduction Project)
Impacts to natural and cultural resources; including threatened and endangered species.
Impacts on recreational opportunities and major travel routes particularly related to the Klamath River.

Notifications:

Agency Administrator
Forest fire duty officer
Resource advisors
Siskiyou Sheriff
Red Cross
California Highway Patrol
Office of Emergency Services
Community and tribal liaison
Community of Happy Camp and surrounding area

Date Each Action		Rationale/Comment for items not completed or completed.
Initiated	Completed:	
1.		
2.		
3.		
4.		
5.		
6.		
7.		
8.		
9.		
10.		
11.		

Happy Camp Complex Fire - Management Action Point 4: China Grade

Condition:

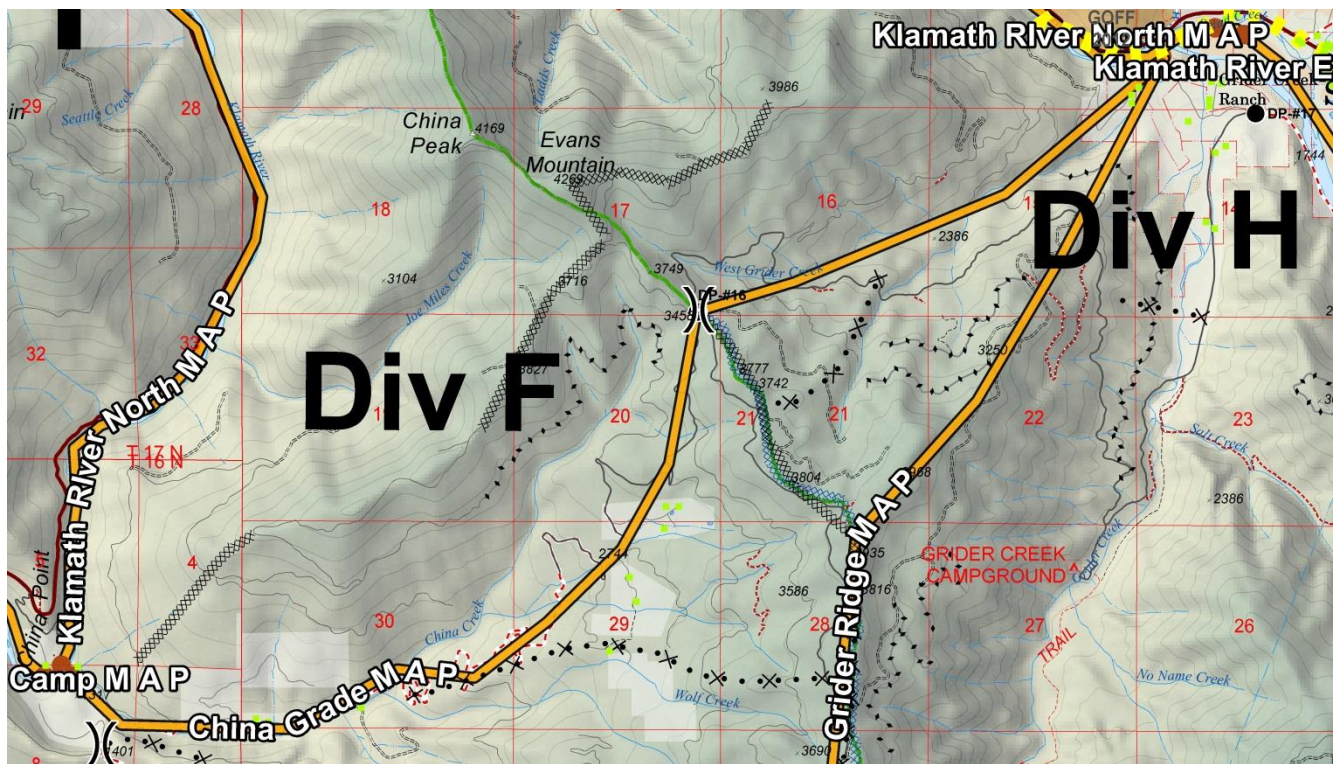
The fire has already reached this MAP. Therefore, actions underway are described below.

Location:

North and northeast of the fire's current perimeter
China Grade road system from China Creek to Grider Creek.

Management Intent:

The intent of this MAP is to serve as a primary line to protect structures and infrastructure along the China Grade road system. In addition, this MAP serves as a barrier for fire spotting and spreading to the north of China Grade Road and Klamath River which would affect additional structures and infrastructure along with impacts to Highway 96.



Suggested Actions:

If fire crosses dozerline/ 46N66 road to Pacific Crest Trailhead in T46N 4W Sec 22; then activate active conversations with Pacific Power to consider shutting down the power line into that area as well assess the threat to Klamath HWY 96 to see if the main power grid (69,000 KW line) would have to be turned off before its get to the highway for operations, The power company needs a minimum of 1 hour to shut both of these lines.

Coordinate shutting off power to transmission lines along Northern Grider Creek with Pacific Power to provide for firefighter safety.

Extinguish any spot fires or slop overs as quickly as possible, and provide point protection on structures and infrastructure.

Conduct strategic burning operations to secure the line and promote low intensity fire

Coordinate with appropriate agencies on structure protection and any identified needs for evacuation.

Values to Protect:

High Voltage Power line (69,000KW) from Happy Camp to Hamburg. Another voltage line that runs north/south from Siead up road to No Name Creek/PCT Trailhead

Structures and infrastructure mainly along China Grade Road.

Wild and Scenic Klamath River and Scenic Byway Highway 96

Potential damage to high valued NEPA projects (timber sales and fuels reduction projects – Thom Seider Project).

Increased impacts to recreational opportunities and closures

Impacts to alternative ingress and egress routes for the community and firefighters

Spotted owl cores and habitat

Habitat for sensitive and endangered aquatic species.

Numerous cultural sites; identified by Resource Advisors.

Probability of Success:

High.

The China Grade Road system has good access for firefighting resources. Spotting or slop overs may occur; however, the road system provides good access for suppression efforts.

Resources:

Resource needs will be determined by the IMT.

Consequences of Not Taking Action:

A much larger and more expensive fire

Potential for damage to homes, infrastructure and private property.

NEPA projects (Thom Seider Timber and Fuels Reduction Project)

Impacts to natural and cultural resources; including threatened and endangered species.

Impacts on recreational opportunities and major travel routes particularly related to the Klamath River and residences along China Grade Road.

Notifications:

- Agency Administrator
- Forest fire duty officer

- Pacific Power Company

- Resource advisors
- Siskiyou Sheriff
- Red Cross
- California Highway Patrol
- Office of Emergency Services
- Community and tribal liaison
- Community of Happy Camp and surrounding area

Date Each Action		Rationale/Comment for items not completed or completed.
Initiated	Completed:	
1.		
2.		
3.		
4.		
5.		
6.		
7.		
8.		
9.		
10.		
11.		

Happy Camp Complex Fire - Management Action Point 5: Grider Ridge

Condition:

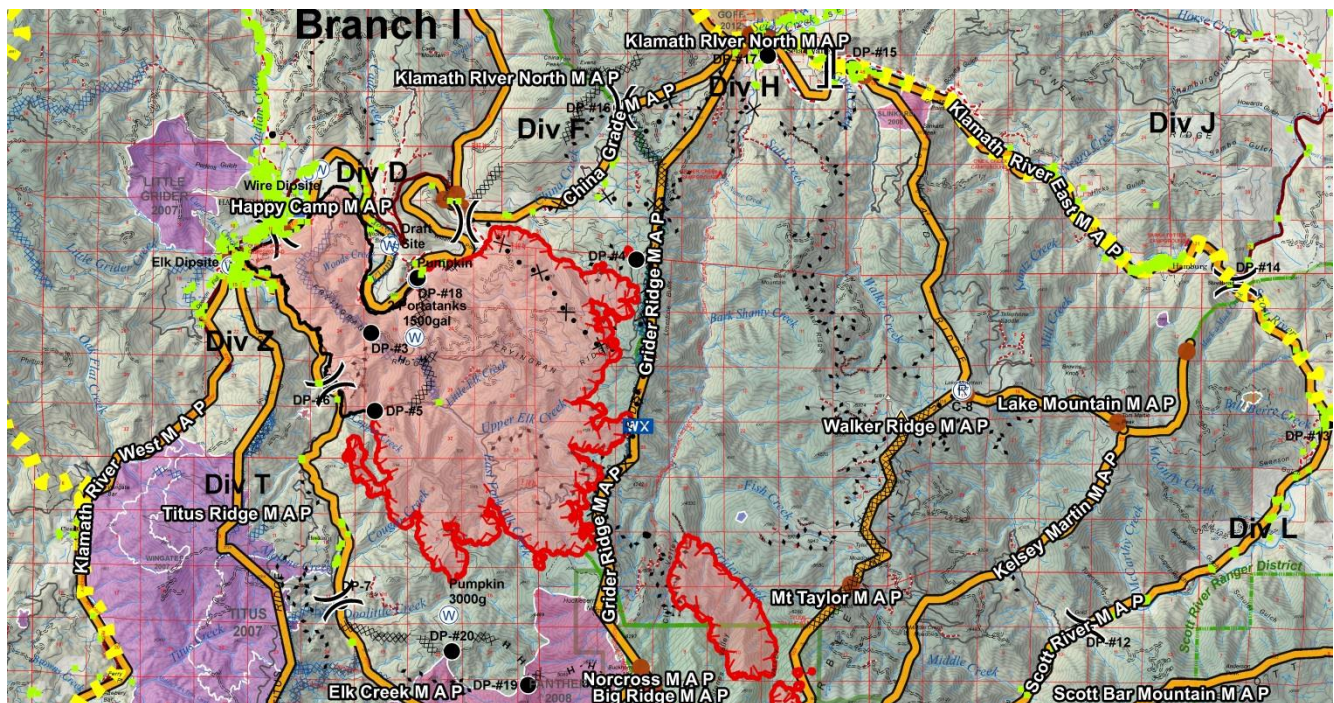
The fire has already reached this MAP. Therefore, actions underway are described below.

Location:

East of the fire's current perimeter
Grider Ridge system from the Klamath River south to Big Ridge

Management Intent:

The intent of this MAP is to continue to serve as a primary line to keep the Frying Pan Fire west of the ridge; potentially providing more fire suppression options for the Faulkstein Fire. The MAP also serves as a trigger point to initiate actions in the communities of Seiad, Hamburg and Walker Ridge based on current and expected fire behavior.



Suggested Actions:

Scout and identify best line construction options on identified ridgelines, road system and trail systems. Begin indirect line construction to keep fire within identified MAP. Coordinate with READ on suggested line construction.
Conduct strategic burning operations to secure the line and promote low intensity fire

Values to Protect:

Small parcel of private land
Potential damage to high valued NEPA projects
Increased impacts to recreational opportunities and closures
Spotted owl cores and habitat
Habitat for sensitive and endangered aquatic species.
Numerous cultural sites; identified by Resource Advisors.

Probability of Success:

Low.
Current and expected fire behavior dictates that this ridge may be breached within the next few operational periods. The fire has established in the drainage below this ridge. With limited time to implement the entire MAP, probability of success is likely low.

Resources:

Resource needs will be determined by the IMT.

Consequences of Not Taking Action:

A much larger and more expensive fire
NEPA projects
Impacts to natural and cultural resources; including threatened and endangered species.
Impacts on recreational opportunities primarily related to area closures along the Klamath River and Marble Mountain Wilderness.

Notifications:

Agency Administrator
Forest fire duty officer
Resource advisors
Community and tribal liaison
Community of Hamburg and Seiad

Date Each Action Initiated	Completed:	Rationale/Comment for items not completed or completed.
1.		
2.		
3.		
4.		
5.		
6.		
7.		
8.		
9.		
10.		
11.		

Happy Camp Complex Fire - Management Action Point 6: Walker Ridge

Condition:

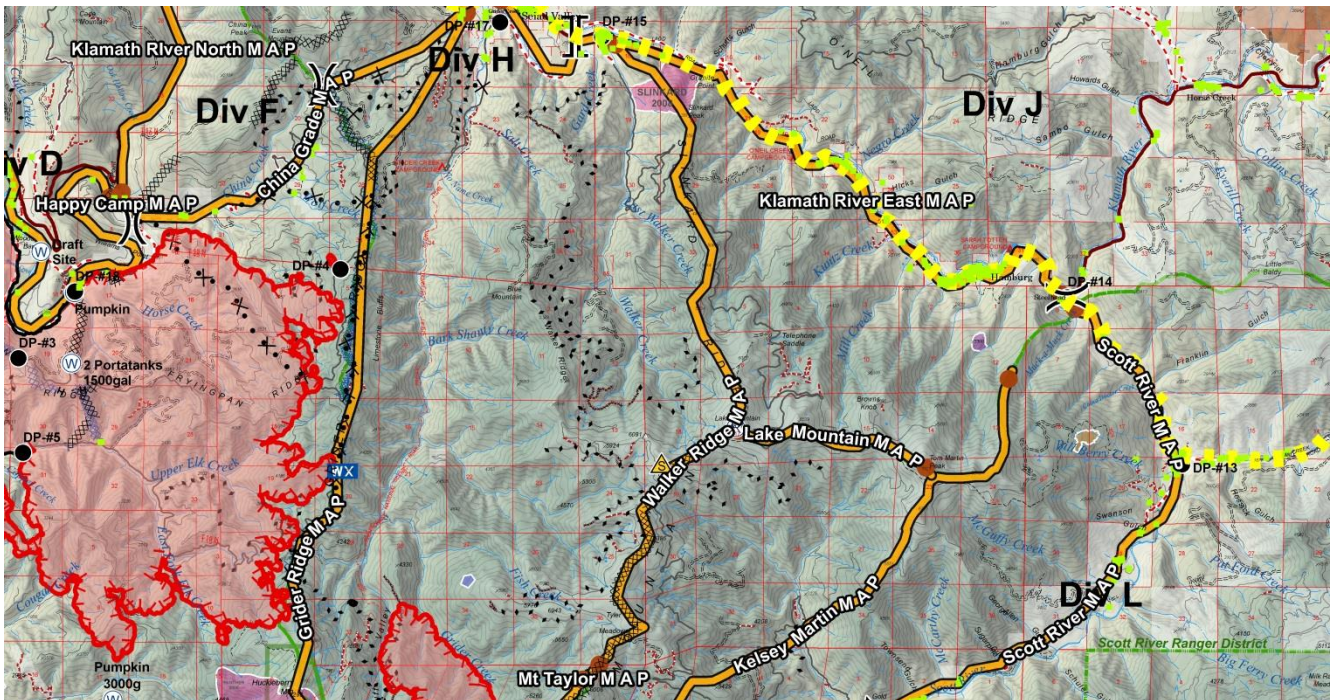
The fire has already reached this MAP. Therefore, actions underway are described below.

Location:

East of the fire’s current perimeter
Walker Ridge system from the Klamath River south to Lake Mountain and then southwest to headwaters of Middle Creek.

Management Intent:

The intent of this MAP is to continue to serve as a primary line for the Faulkstein Fire and contingency line for the Frying Pan Fire; preventing spread to the east into additional communities such as Scott Bar. The MAP also serves as a trigger point to initiate actions in the communities of Hamburg and Scott Bar based on expected fire spread and behavior.



Suggested Actions:

Scout and identify best line construction options on identified ridgelines, road system and trail systems. Begin indirect line construction to keep fire within identified MAP. Coordinate with READ on suggested line construction.

Coordinate with Lake Mountain Lookout for possible trigger point for evacuation.

Conduct strategic burning operations to secure the line and promote low intensity fire

Values to Protect:

Structures and infrastructure mainly along the Klamath and Scott River Corridor's.

Wild and Scenic Klamath River, Scott River, Highway 96, and Scott River Road

Increased impacts to recreational opportunities and closures

Spotted owl cores and habitat

Habitat for sensitive and endangered aquatic species.

Numerous cultural sites; identified by Resource Advisors.

Probability of Success:

Low.

The ridge has continuous fuels and heavy timber. Implementation of indirect line will take significant amount of time to complete. If fire behavior and spread allows adequate time to construct line, there are moderate chance suppression resources will be able to hold the line.

Resources:

Resource needs will be determined by the IMT.

Consequences of Not Taking Action:

A much larger and more expensive fire

Potential for structure and private property damage.

Impacts to natural and cultural resources; including threatened and endangered species.

Impacts on recreational opportunities primarily related to area closures along the Klamath River and Marble Mountain Wilderness.

Notifications:

Agency Administrator

Forest fire duty officer

Resource advisors

Siskiyou Sheriff

Red Cross

California Highway Patrol

Office of Emergency Services

Community and tribal liaison

Community of Hamburg and Scott Bar

Lake Mountain Lookout

Date Each Action		Rationale/Comment for items not completed or completed.
Initiated	Completed:	
1.		
2.		
3.		
4.		
5.		
6.		
7.		
8.		
9.		
10.		
11.		

Happy Camp Complex Fire - Management Action Point 7: Klamath River East

Condition:

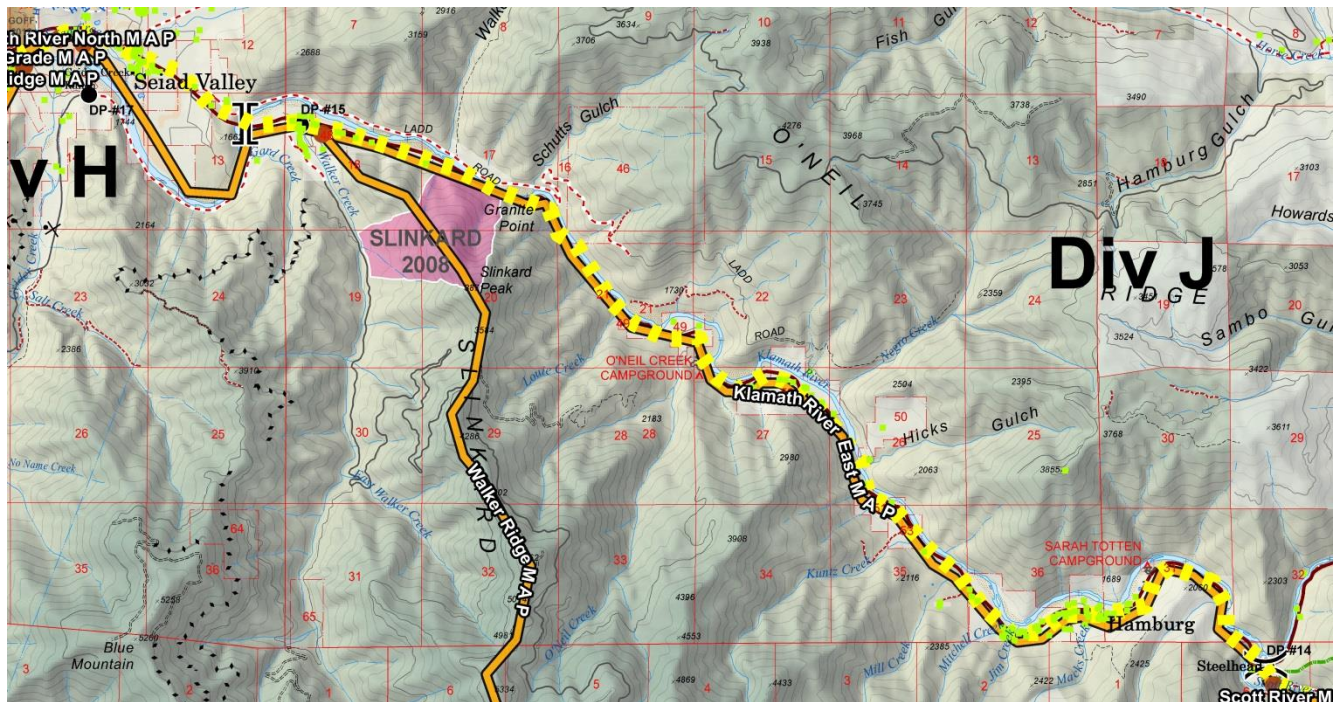
Implement portions of Klamath River East MAP impacted if fire crosses or is likely to cross Grider Ridge (MAP 5), Walker Ridge (MAP 6) or Kelsey-Martin (MAP 9).

Location:

East of the fire's current perimeter
The Klamath River from China Creek to the mouth of the Scott River.

Management Intent:

The intent of this MAP is to be a contingency plan if the fire were to cross or likely to cross Grider Ridge (MAP 5), Walker Ridge (MAP 6) or Kelsey-Martin (MAP 9). The intent of the Klamath River East MAP would be to provide protection to structures and infrastructure while limiting impacts to natural and cultural resources by utilizing direct, indirect and point protection tactics. Numerous structures exist along the Klamath River Corridor. The majority of structures within this MAP exist near the communities of Seiad, Thompson Creek, Goff Creek and Hamburg.



Suggested Actions:

Extinguish any spot fires or slop overs as quickly as possible, and provide point protection on structures and infrastructure.

Conduct strategic burning operations to secure the line and promote low intensity fire

Coordinate with appropriate agencies on structure protection and any identified needs for evacuation.

Values to Protect:

Structures and infrastructure mainly along the Klamath River Corridor.

Wild and Scenic Klamath River and Scenic Byway Highway 96

Increased impacts to recreational opportunities and closures

Impacts to alternative ingress and egress routes for the community and firefighters

Spotted owl cores and habitat

Range Allotments

Habitat for sensitive and endangered aquatic species.

Numerous cultural sites; identified by Resource Advisors.

Probability of Success:

High.

The Klamath River and Highway 96 serve as a barrier to fire spread. Spotting may occur; however, is a low probability and resources are available to respond to any identified spotting.

Resources:

Resource needs will be determined by the IMT.

Consequences of Not Taking Action:

A much larger and more expensive fire

Potential for damage to homes, infrastructure and private property.

Impacts to natural and cultural resources; including threatened and endangered species.

Impacts to range allotments

Impacts on recreational opportunities and major travel routes.

Notifications:

Agency Administrator

Forest fire duty officer

Resource advisors

Siskiyou Sheriff

Red Cross

California Highway Patrol

Office of Emergency Services

Community and tribal liaison

Community of Happy Camp and surrounding area

Date Each Action		Rationale/Comment for items not completed or completed.
Initiated	Completed:	
1.		
2.		
3.		
4.		
5.		
6.		
7.		
8.		
9.		
10.		
11.		

Happy Camp Complex Fire - Management Action Point 8: Lake Mountain

Condition:

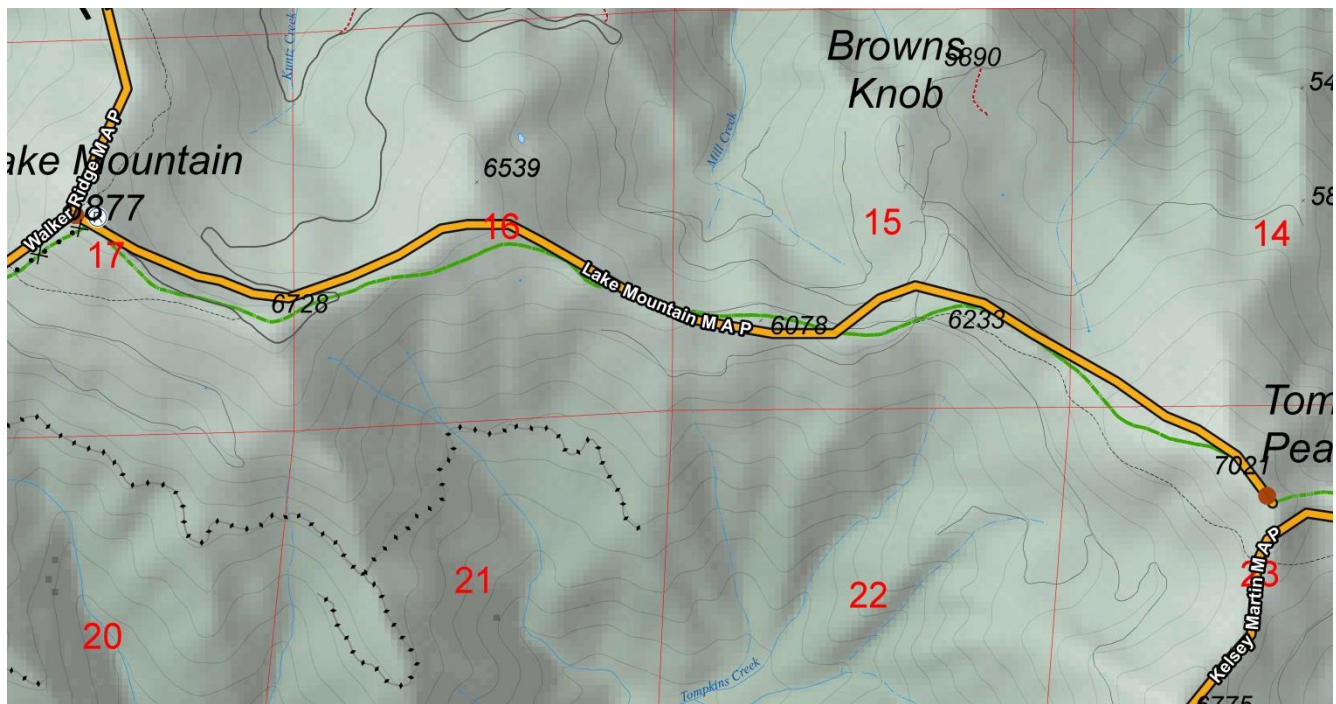
The fire crosses or is likely to cross Walker Ridge (MAP 6).

Location:

East of the fire's current perimeter
Ridge from Lake Mountain Lookout east to mouth of Scott River.

Management Intent:

The intent of this MAP is to keep fire within sub-drainages to limit the amount of the Scott River communities impacted by fire.



Suggested Actions:

- Scout and identify best line construction options on identified ridgelines and road systems. Begin indirect line construction to keep fire within identified MAP.
- Coordinate with READ on suggested line construction.
- Coordinate with Lake Mountain Lookout for possible trigger point for evacuation. This MAP is a route/road to the lookout.
- Conduct strategic burning operations to secure the line and promote low intensity fire

Values to Protect:

- Structures and infrastructure mainly along the Scott River Corridor.
- Lake Mountain Lookout
- Scott River and Scott River Road
- Mining district on the Scott River.
- Increased impacts to recreational opportunities and closures
- Spotted owl cores and habitat
- Range allotments
- Habitat for sensitive and endangered aquatic species.
- Numerous cultural sites; identified by Resource Advisors.

Probability of Success:

Moderate

The ridge has areas of continuous fuels. The ridge has some road access. Current and expected fire behavior should allow time to implement this MAP with indirect line.

Resources:

Resource needs will be determined by the IMT.

Consequences of Not Taking Action:

- A much larger and more expensive fire
- Potential for structure and private property damage.
- Impacts to natural and cultural resources; including threatened and endangered species.
- Impacts to range allotment
- Impacts on recreational opportunities primarily related to area closures along the Klamath River and Marble Mountain Wilderness.

Notifications:

- Agency Administrator
- Forest fire duty officer
- Resource advisors
- Siskiyou Sheriff
- Red Cross
- California Highway Patrol
- Office of Emergency Services
- Community and tribal liaison
- Community of Scott Bar
- Lake Mountain Lookout

Date Each Action		Rationale/Comment for items not completed or completed.
Initiated	Completed:	
1.		
2.		
3.		
4.		
5.		
6.		
7.		
8.		
9.		
10.		
11.		

Happy Camp Complex Fire - Management Action Point 9: Kelsey-Martin

Condition:

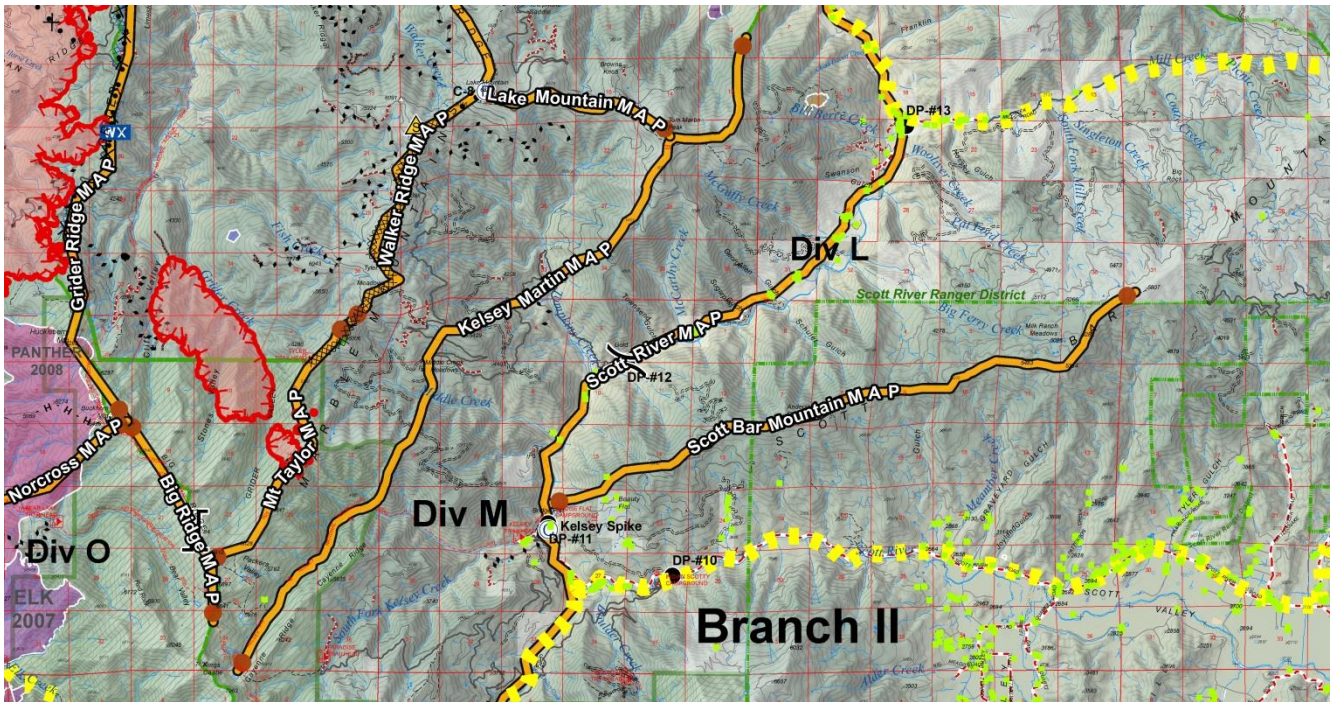
The fire crosses Walker Ridge (MAP 6).

Location:

East of the fire's current perimeter
Kelsey Creek Trail from Paradise Lake east to road system and Middle Creek Meadows; then east to ridge to Tom Martin Peak and continuing to the Klamath River.

Management Intent:

The intent of this MAP is to serve as a contingency line if Walker Ridge (MAP 6) is breached. The Kelsey-Martin trail, road and ridge system serves as the next logical area past Walker Ridge preventing fire spread further east and impacting structures along the Scott River Corridor.



Suggested Actions:

If fire crosses the Kelsey-Martin MAP and current/expected fire behavior shows and impact to the Scott River Road then activate active conversations with Pacific Power to consider shutting down the power line into that area as well assess the threat to Klamath HWY 96 to see if the main power grid (12,000 KW line) would have to be turned off before its get to the highway for operations, This power line requires manual shutoff so early notification is best for how long it would take to deactivate the line.

Scout and identify best line construction options on identified ridgelines and road systems. Begin indirect line construction to keep fire within identified MAP.

Coordinate with READ on suggested line construction.

Conduct strategic burning operations to secure the line and promote low intensity fire

Values to Protect:

High Voltage power line (12,000KW) from Hamburg south along Scott River to Kelsey Creek. This power line would have to be shut off manually if fire were to pose a threat to the road corridor.

Structures and infrastructure mainly along the Scott River Corridor.

Scott River and Scott River Road

Mining district on the Scott River.

Increased impacts to recreational opportunities and closures

Spotted owl cores and habitat

Range allotments

Habitat for sensitive and endangered aquatic species.

Numerous cultural sites; identified by Resource Advisors.

Probability of Success:

Moderate

The ridge has areas of continuous fuels, primarily in middle to lower elevation ranges.

The ridge has some road access. Higher elevations have some natural barriers.

Resources:

Resource needs will be determined by the IMT.

Consequences of Not Taking Action:

A much larger and more expensive fire

Potential for structure and private property damage.

Impacts to natural and cultural resources; including threatened and endangered species.

Impacts to range allotment

Impacts on recreational opportunities primarily related to area closures along the Klamath River and Marble Mountain Wilderness.

Notifications:

- Agency Administrator
- Forest fire duty officer
- Resource advisors
- Pacific Power
- Siskiyou Sheriff
- Red Cross
- California Highway Patrol
- Office of Emergency Services
- Community and tribal liaison
- Community of Scott Bar

Date Each Action		Rationale/Comment for items not completed or completed.
Initiated	Completed:	
1.		
2.		
3.		
4.		
5.		
6.		
7.		
8.		
9.		
10.		
11.		

Happy Camp Complex Fire - Management Action Point 10: Scott River

Condition:

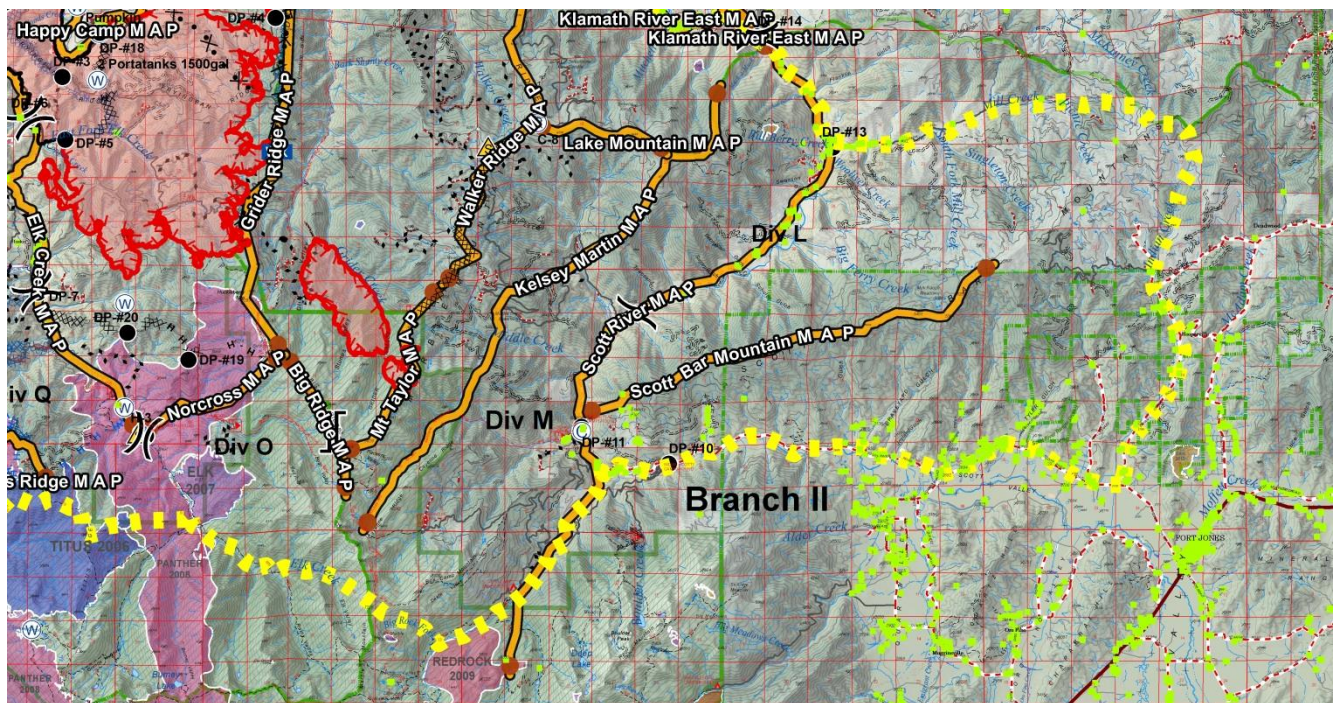
The fire has crossed Walker Ridge (MAP 6) and is likely to Cross Kelsey-Martin (MAP 9)

Location:

East of the fire’s current perimeter
The mouth of the Scott River south and east to Jones Beach area.

Management Intent:

The intent of this MAP is to be a contingency plan if the fire had potential to impact communities and structures along Scott River Road. The intent of the Scott River MAP would be to provide protection to structures and infrastructure while limiting impacts to natural and cultural resources by utilizing direct, indirect and point protection tactics. Numerous structures exist along the Scott River Corridor and community of Scott Bar.



Suggested Actions:

Extinguish any spot fires or slop overs as quickly as possible, and provide point protection on structures and infrastructure.

Conduct strategic burning operations to secure the line and promote low intensity fire

Coordinate with appropriate agencies on structure protection and any identified needs for evacuation.

Values to Protect:

Structures and infrastructure mainly along the Scott River Corridor.

Impacts to the Scott River and Scott River Road.

Increased impacts to recreational opportunities and closures

Impacts to alternative ingress and egress routes for the community and firefighters

Spotted owl cores and habitat

NEPA projects

Habitat for sensitive and endangered aquatic species.

Numerous cultural sites; identified by Resource Advisors.

Probability of Success:

High.

Scott River and Scott River road serve as a barrier to fire spread. Spotting may occur; however, is a low probability and resources are available to respond to any identified spotting.

Resources:

Resource needs will be determined by the IMT.

Consequences of Not Taking Action:

A much larger and more expensive fire

Potential for damage to homes, infrastructure and private property.

Impacts to natural and cultural resources; including threatened and endangered species.

Impacts to current and on-going NEPA projects.

Impacts on recreational opportunities and major travel routes.

Notifications:

Agency Administrator

Forest fire duty officer

Resource advisors

Siskiyou Sheriff

Red Cross

California Highway Patrol

Office of Emergency Services

Community and tribal liaison

Community of Happy Camp and surrounding area

Date Each Action		Rationale/Comment for items not completed or completed.
Initiated	Completed:	
1.		
2.		
3.		
4.		
5.		
6.		
7.		
8.		
9.		
10.		
11.		

Happy Camp Complex Fire - Management Action Point 11: Scott Bar Mountain

Condition:

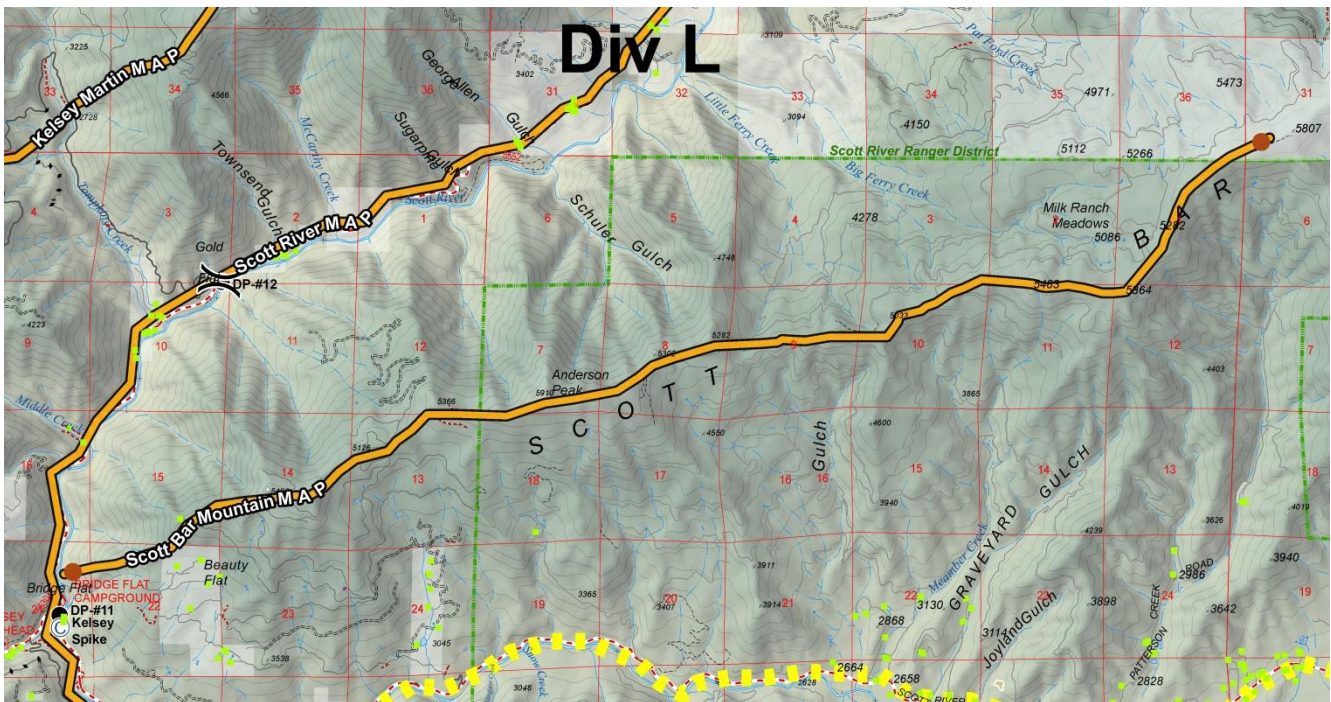
The fire has crossed or is likely to cross MAP 10- Scott River.

Location:

East of the fire's current perimeter
The mouth of the Scott River southeast to Collins Baldy Lookout and following the main ridge system to Scott Bar Mountain Lookout.

Management Intent:

The intent of this MAP is to be a contingency plan if the fire crosses or is likely to cross the Scott River. This MAP protects further impacts to structures on the east side of the Scott River such as Mill Creek and natural and cultural concerns.



Suggested Actions:

Extinguish any spot fires or slop overs as quickly as possible, and provide point protection on structures and infrastructure.

Conduct strategic burning operations to secure the line and promote low intensity fire

Coordinate with appropriate agencies on structure protection and any identified needs for evacuation.

Values to Protect:

Structures and infrastructure mainly along the Scott River Corridor and in the Mill Creek drainage.

Impacts to the Scott River and Scott River Road.

Increased impacts to recreational opportunities and closures

Impacts to alternative ingress and egress routes for the community and firefighters

Spotted owl cores and habitat

NEPA projects (McCollins and Singleton projects).

Collins Baldy and Scott Bar Mountain Lookouts.

Habitat for sensitive and endangered aquatic species.

Numerous cultural sites and mining claims; identified by Resource Advisors.

Probability of Success:

Moderate.

This is a major ridge system and has good access. Fuels are continuous in areas.

Time to complete the entire MAP would be significant.

Resources:

Resource needs will be determined by the IMT.

Consequences of Not Taking Action:

A much larger and more expensive fire

Potential for damage to homes, infrastructure and private property.

Impacts to natural and cultural resources; including threatened and endangered species.

Impacts to current and on-going NEPA projects.

Impacts on recreational opportunities and major travel routes.

Notifications:

Agency Administrator

Forest fire duty officer

Resource advisors

Siskiyou Sheriff

Red Cross

California Highway Patrol

Office of Emergency Services

Community and tribal liaison

Collins Baldy Lookout / Scott Bar Mountain Lookout (not staffed)

Community of Scott Bar and Mill Creek.

Date Each Action Initiated	Completed:	Rationale/Comment for items not completed or completed.
1.		
2.		
3.		
4.		
5.		
6.		
7.		
8.		
9.		
10.		
11.		

Happy Camp Complex Fire - Management Action Point 12: Mt Taylor

Condition:

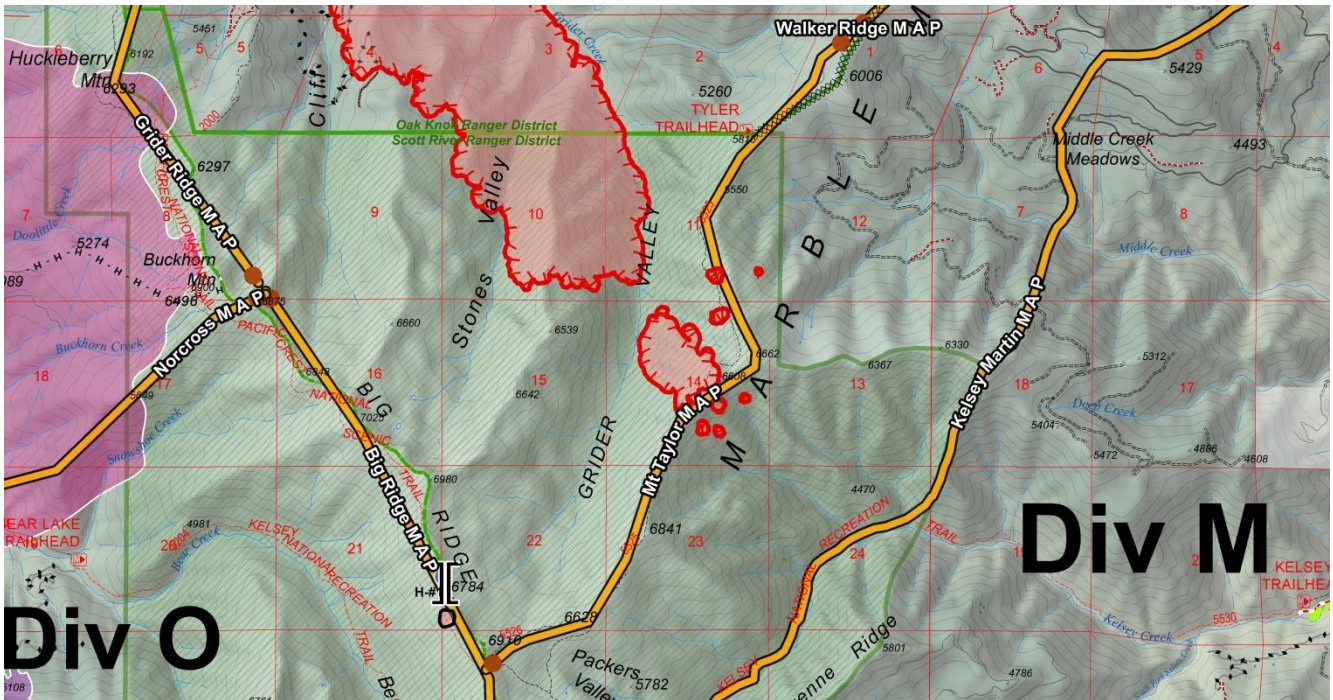
Fire established across the ridge separating Grider and Kelsey Creek. Note: this MAP was breached by several spot fires on 8/20/14.

Location:

See line labeled MAP12 (Mt. Taylor)

Management Intent:

Fire has crossed this MAP already. There is still a possibility of suppressing the spot fires in Kelsey Creek. The primary intention of this MAP is to serve as a threshold to initiate the following actions:



Suggested Actions:

1. Evaluate fire behavior, safety concerns, and probability of success in containing spot fires in Kelsey Creek.
2. Consider ignition operations and/or delaying/checking options along Grider Ridge to slow Easterly fire spread.
3. Consider Pre-Evacuation Notifications along the Scott River.
4. Ensure the public has been cleared from the area and firing plan is complete.
5. Initiate structure triage in Scott River drainage and Carver Cabin (near Turk Lake)

Values to Protect:

**** High dollar Rust resistant sugar pine (progeny site in Kelsey Creek).**

Private property, infrastructure and agency infrastructure within Scott River drainage
Carver Cabin and barn (near Turk Lake)
Grazing allotments within Scott River drainage
Increased impacts to recreational opportunities and closures
Wilderness character
Kelsey Creek Trail
Spotted owl cores and habitat
Habitat for sensitive and endangered aquatic species.
Numerous cultural sites; identified by Resource Advisors.

Probability of Success:

Fire has already crossed this MAP; it is likely these spot fires will continue to grow. Suppression efforts are hampered by inversions (lack of air support), steep and rugged terrain, and heavy fuels.

Resources:

Resource needs will be determined by the IMT.

Consequences of Not Taking Action:

If fire becomes established in Kelsey Creek it is very likely that it will continue to move to the North and East towards numerous structures along the Scott River.

Notifications:

- Agency Administrator
- Forest fire duty officer
- Resource advisors
- Siskiyou Sheriff
- Red Cross
- California Highway Patrol
- Office of Emergency Services
- Community and tribal liaison
- Community of Happy Camp and surrounding area
- Calfire
- Scott River Department
- Fort Jones Rural Fire Department
- California Fish and Wildlife

Date Each Action		Rationale/Comment for items not completed or completed.
Initiated	Completed:	
1.		
2.		
3.		
4.		
5.		
6.		
7.		
8.		
9.		
10.		
11.		

Happy Camp Complex Fire - Management Action Point 13: Norcross

Condition:

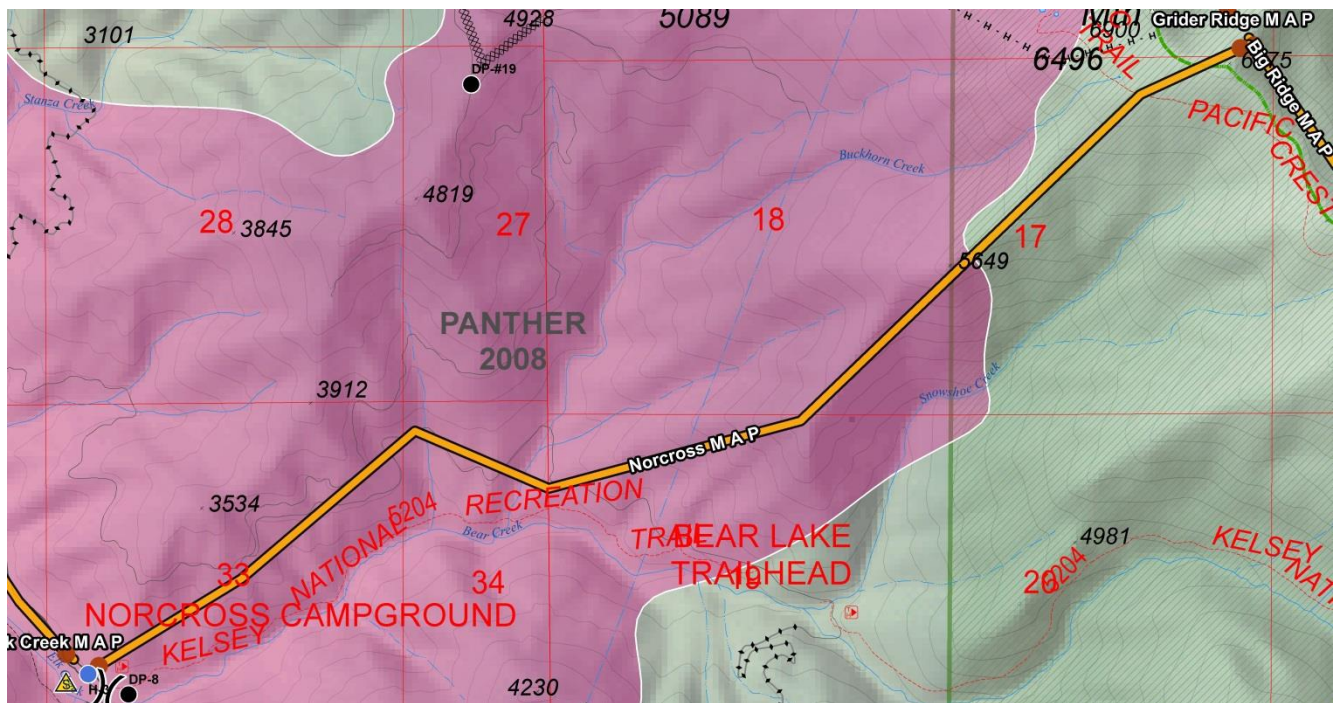
Fire becomes established the Bear Creek drainage, positioning itself to run up drainage further into the wilderness.

Location:

See line labeled MAP13

Management Intent:

The fire will have to move through several burn scars (2007) to cross this MAP. Fire crossing this MAP and becoming established in Bear Creek would impact the probability of success and validity of using Big Ridge as a control feature.



Suggested Actions:

1. Reevaluate probability of success in using Big Ridge as a control feature
2. Consider expanding the area closure further to South.

Values to Protect:

- Dispersed recreation sites and trails in designated wilderness
- Carver Cabin and barn (near Turk Lake)
- Wilderness character
- Spotted owl cores and habitat
- Habitat for sensitive and endangered aquatic species.
- Numerous cultural sites; identified by Resource Advisors.

Probability of Success:

High, numerous burn scars surround this MAP.

Resources:

Resource needs will be determined by the IMT.

Consequences of Not Taking Action:

If fire becomes established in Bear Creek there is a strong potential it will negate any suppression efforts on Big Ridge. Further spread to the South will be likely if fire crosses this MAP.

Notifications:

- Agency Administrator
- Forest fire duty officer
- Resource advisors
- Community and tribal liaison

Date Each Action		Rationale/Comment for items not completed or completed.
Initiated	Completed:	
1.		
2.		
3.		
4.		
5.		
6.		
7.		
8.		
9.		
10.		
11.		

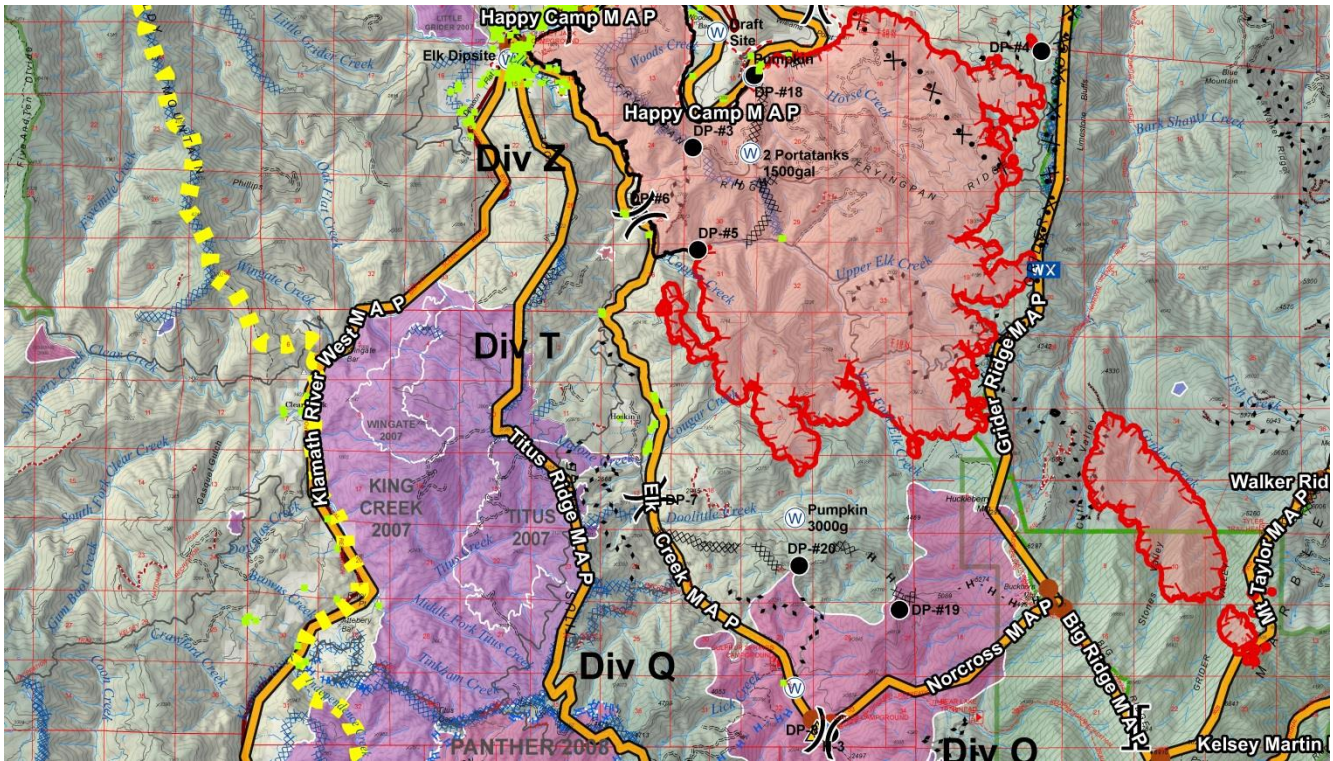
Happy Camp Complex Fire - Management Action Point 14: Elk Creek

Condition:

Fire becomes established west of Elk Creek.

Location:

Elk Creek



Management Intent:

Elk Creek is a primary containment line. There are also structures within this drainage. Fire becoming established West of Elk Creek would threaten additional structures, private property and important Cultural resources.

Suggested Actions:

1. Reevaluate probability of success in using Big Ridge as a control feature
2. Consider expanding the area closure further to South.

Values to Protect:

- Homes, private property and infrastructure along Elk Creek
- Campgrounds and recreation sites in upper Elk Creek
- Spotted owl cores and habitat
- Habitat for sensitive and endangered aquatic species.
- Numerous cultural sites; identified by Resource Advisors.

Probability of Success:

Moderate. There is good road access/egress, numerous water sources, and the prevailing direction of spread is favorable.

Resources:

Resource needs will be determined by the IMT.

Consequences of Not Taking Action:

Fire becomes established West of Elk Creek would threaten additional structures, property, and cultural resources. This would also substantially increase the duration and exposure to incident responders on this flank of the fire.

Notifications:

- Agency Administrator
- Forest fire duty officer
- Resource advisors
- Community and tribal liaison

Date Each Action		Rationale/Comment for items not completed or completed.
Initiated	Completed:	
1.		
2.		
3.		
4.		
5.		
6.		
7.		
8.		
9.		
10.		
11.		

Happy Camp Complex Fire - Management Action Point 15: Big Ridge

Condition:

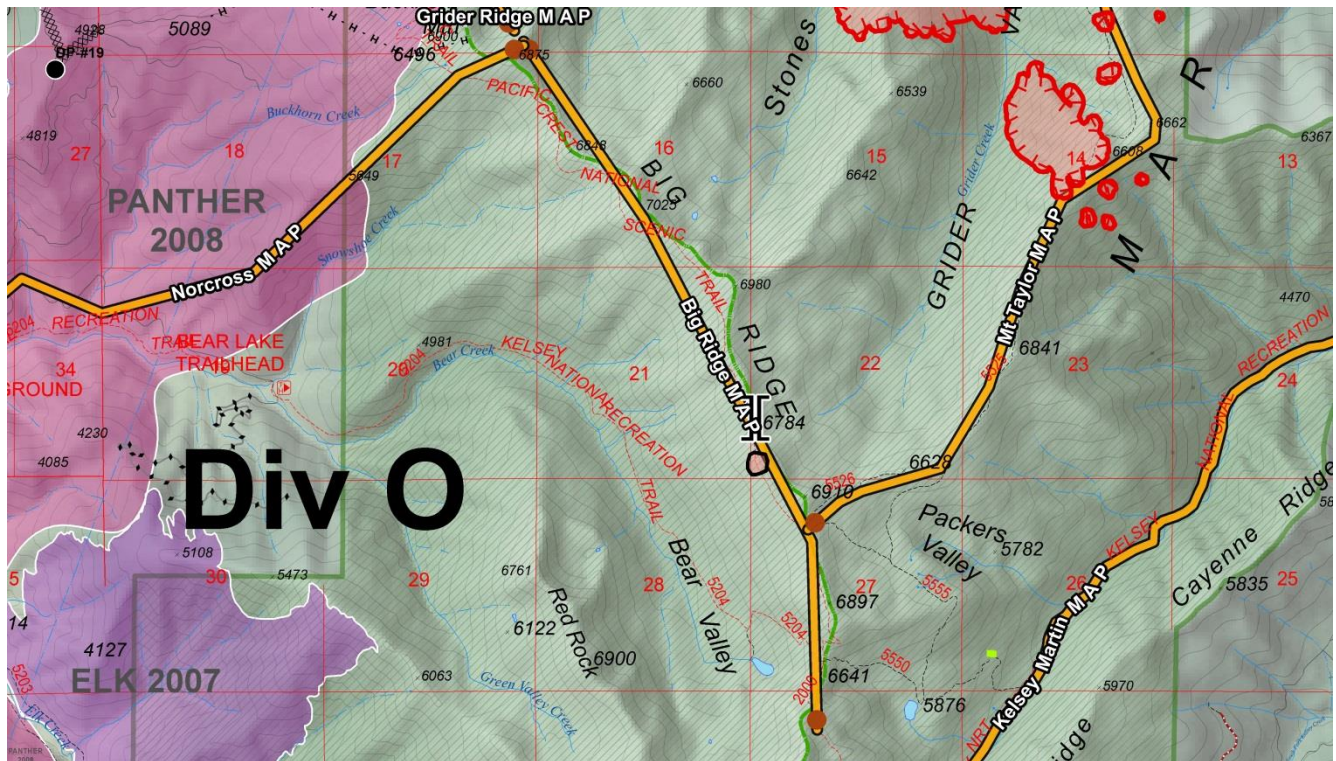
Fire becomes established west of Big Ridge.

Location:

Big Ridge

Management Intent:

Big Ridge is a primary containment feature for the South flank of the fire. Fire crossing Big Ridge to the South would increase the duration of the incident and make further spread to the South likely.



Suggested Actions:

1. Reevaluate options to contain Southern flank of the fire, consider potential impacts in designated wilderness and responder exposure.
2. Consider expanding the area closure further to South.

Values to Protect:

- Dispersed recreation sites and trails in designated wilderness
- Carver Cabin and barn (near Turk Lake)
- Wilderness character
- Spotted owl cores and habitat
- Habitat for sensitive and endangered aquatic species.
- Numerous cultural sites; identified by Resource Advisors.

Probability of Success:

Moderate, due to the fire being positioned to make an up drainage run with a North wind

Resources:

Resource needs will be determined by the IMT.

Consequences of Not Taking Action:

Additional fire growth to the South that may necessitate expanding the area closure and impacts to the trails system within the wilderness.

Notifications:

- Agency Administrator
- Forest fire duty officer
- Resource advisors
- Community and tribal liaison

Date Each Action		Rationale/Comment for items not completed or completed.
Initiated	Completed:	
1.		
2.		
3.		
4.		
5.		
6.		
7.		
8.		
9.		
10.		
11.		

Happy Camp Complex Fire - Management Action Point 16: Klamath River North

Condition:

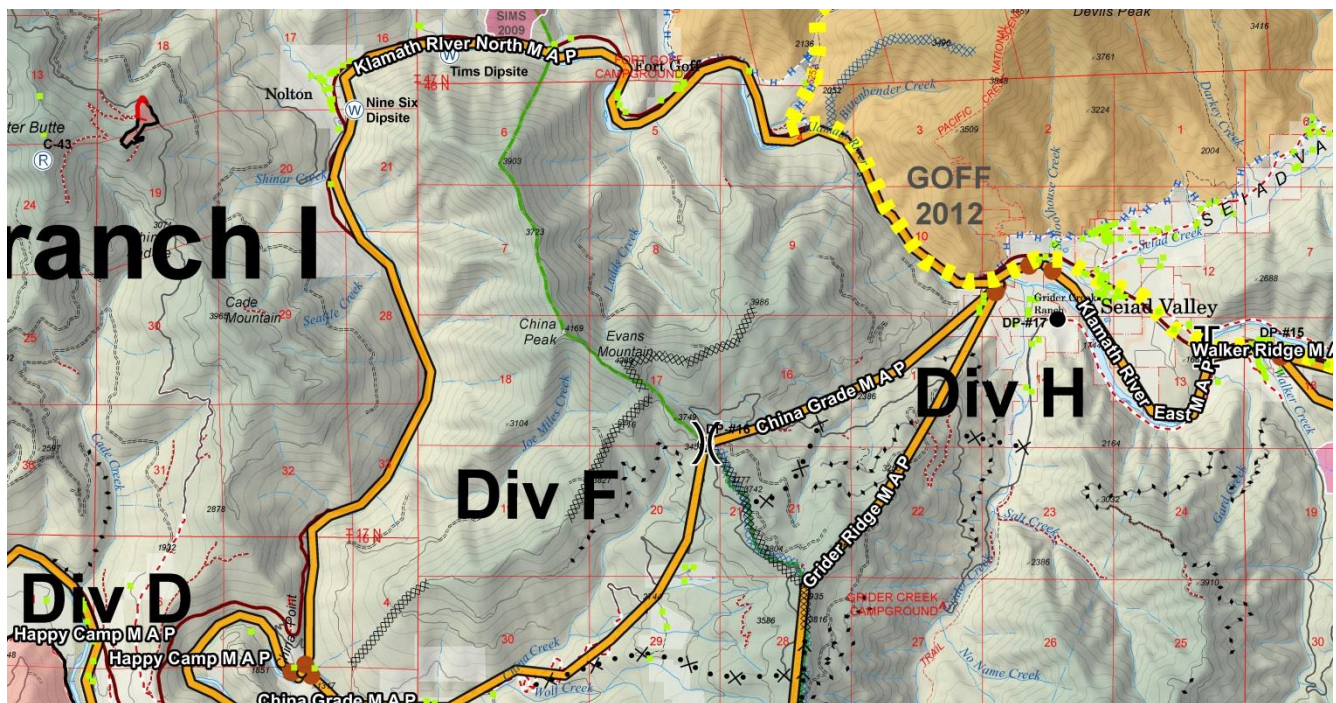
The fire has crossed or is likely to cross China Grade Road (MAP 4).

Location:

North of the fire's current perimeter
The Klamath River from China Creek to Seiad.

Management Intent:

The intent of this MAP is to be a contingency plan if the fire were to cross or likely to cross MAP 6 – China Grade. The intent of the Klamath River North MAP would be to provide protection to structures and infrastructure while limiting impacts to natural and cultural resources by utilizing direct, indirect and point protection tactics. Numerous structures exist along the Klamath River Corridor including population densities at Goff Creek, Thompson Creek and Seiad.



Suggested Actions:

Extinguish any spot fires or slop overs as quickly as possible, and provide point protection on structures and infrastructure.

Conduct strategic burning operations to secure the line and promote low intensity fire

Coordinate with appropriate agencies on structure protection and any identified needs for evacuation.

Values to Protect:

Structures and infrastructure mainly along the Klamath River Corridor.

Wild and Scenic Klamath River and Scenic Byway Highway 96

Domestic Watershed to the greater Happy Camp and Seiad areas.

Increased impacts to recreational opportunities and closures

Impacts to alternative ingress and egress routes for the community and firefighters

Spotted owl cores and habitat

Current and on-going NEPA projects

Habitat for sensitive and endangered aquatic species.

Numerous cultural sites; identified by Resource Advisors.

Probability of Success:

High.

The Klamath River and Highway 96 serve as a barrier to fire spread. Spotting may occur; however, is a low probability and resources are available to respond to any identified spotting.

Resources:

Resource needs will be determined by the IMT.

Consequences of Not Taking Action:

A much larger and more expensive fire

Potential for damage to homes, infrastructure and private property.

Impacts to natural and cultural resources; including threatened and endangered species.

Impacts on recreational opportunities and major travel routes.

Impacts to current and on-going NEPA projects including timber sales.

Notifications:

Agency Administrator

Forest fire duty officer

Resource advisors

Siskiyou Sheriff

Red Cross

California Highway Patrol

Office of Emergency Services

Community and tribal liaison

Community of Happy Camp and surrounding area

Date Each Action		Rationale/Comment for items not completed or completed.
Initiated	Completed:	
1.		
2.		
3.		
4.		
5.		
6.		
7.		
8.		
9.		
10.		
11.		