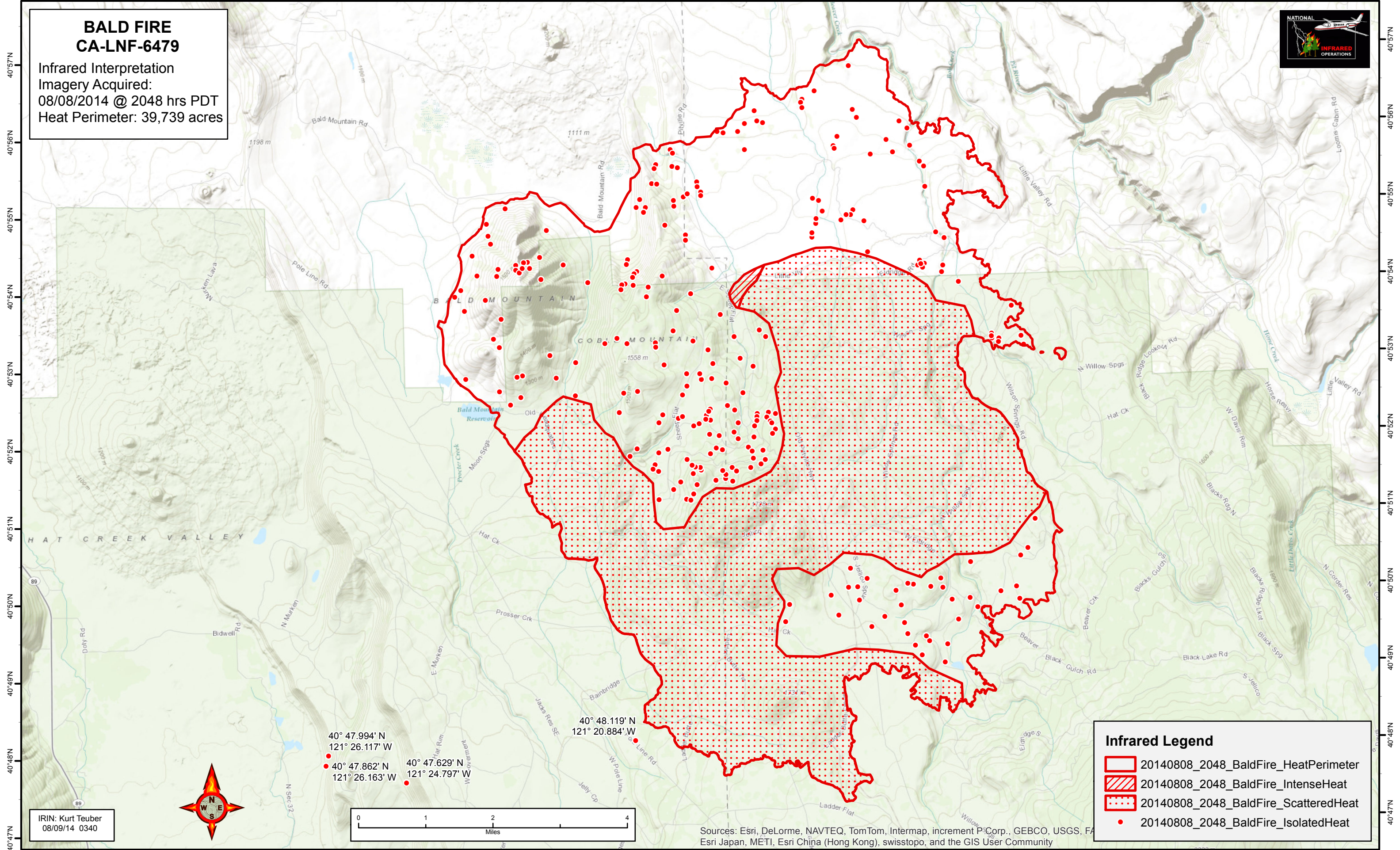
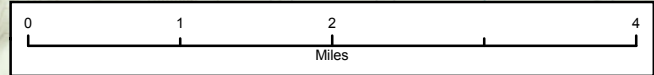


121°31'W 121°30'W 121°29'W 121°28'W 121°27'W 121°26'W 121°25'W 121°24'W 121°23'W 121°22'W 121°21'W 121°20'W 121°19'W 121°18'W 121°17'W 121°16'W 121°15'W 121°14'W 121°13'W 121°12'W 121°11'W 121°10'W 121°9'W 121°8'W

**BALD FIRE
CA-LNF-6479**
Infrared Interpretation
Imagery Acquired:
08/08/2014 @ 2048 hrs PDT
Heat Perimeter: 39,739 acres



40° 47.994' N 121° 26.117' W
40° 47.862' N 121° 26.163' W
40° 47.629' N 121° 24.797' W
40° 48.119' N 121° 20.884' W



Infrared Legend

- 20140808_2048_BaldFire_HeatPerimeter
- 20140808_2048_BaldFire_IntenseHeat
- 20140808_2048_BaldFire_ScatteredHeat
- 20140808_2048_BaldFire_IsolatedHeat

IRIN: Kurt Teuber
08/09/14 0340

Sources: Esri, DeLorme, NAVTEQ, TomTom, Intermap, increment P Corp., GEBCO, USGS, FAO, Swisstopo, Esri Japan, METI, Esri China (Hong Kong), and the GIS User Community

121°31'W 121°30'W 121°29'W 121°28'W 121°27'W 121°26'W 121°25'W 121°24'W 121°23'W 121°22'W 121°21'W 121°20'W 121°19'W 121°18'W 121°17'W 121°16'W 121°15'W 121°14'W 121°13'W 121°12'W 121°11'W 121°10'W 121°9'W

40°57'N 40°56'N 40°55'N 40°54'N 40°53'N 40°52'N 40°51'N 40°50'N 40°49'N 40°48'N 40°47'N