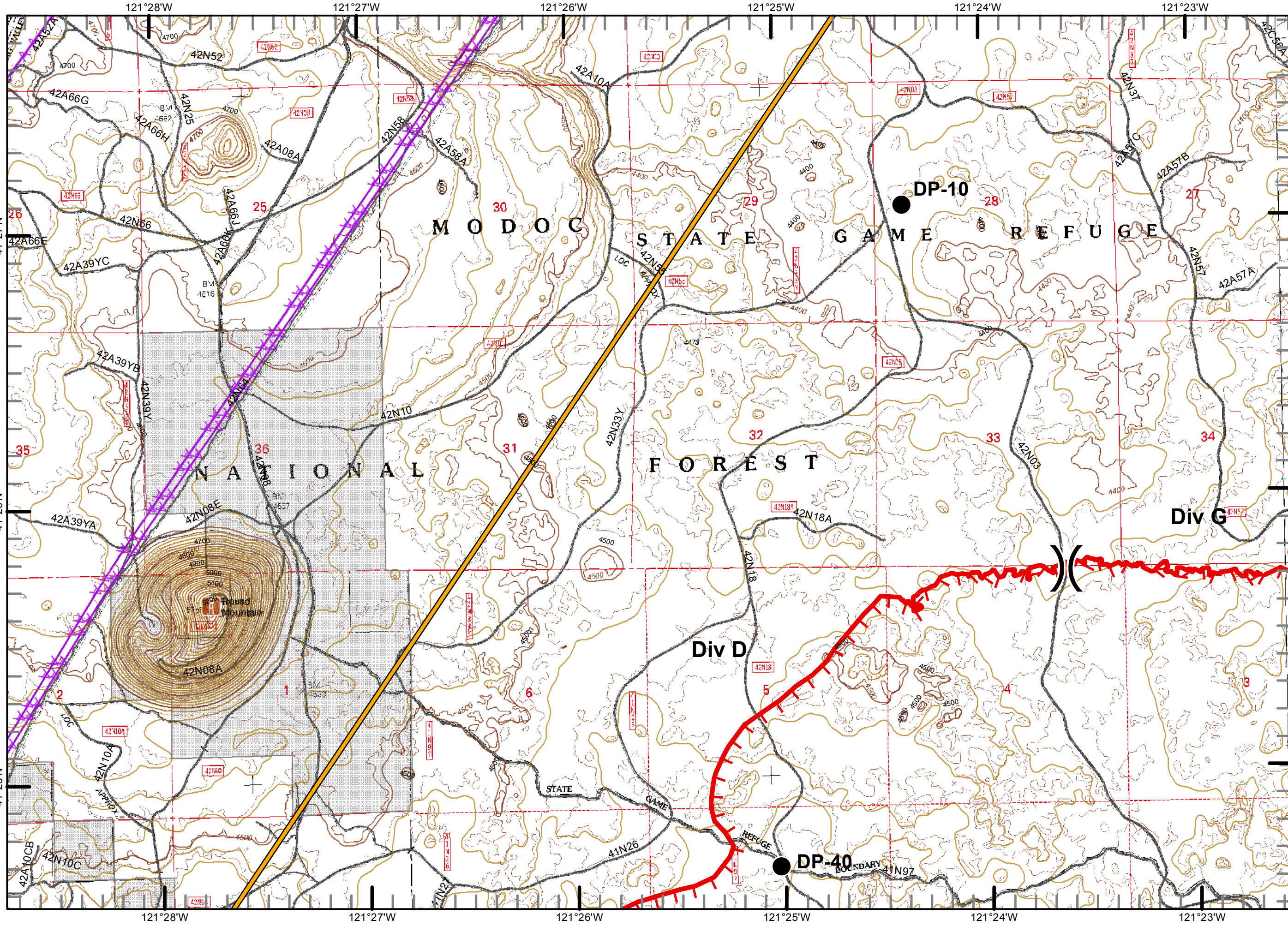




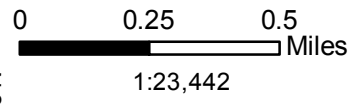
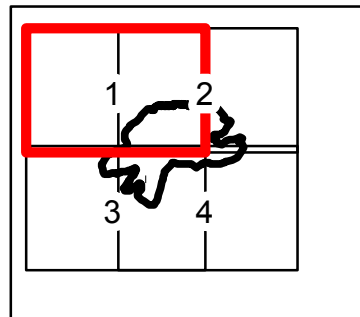


Frog Incident
CA-MDF 00570
8/3/2015
IAP
Night shift
4,213 ac
Pg1



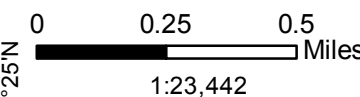
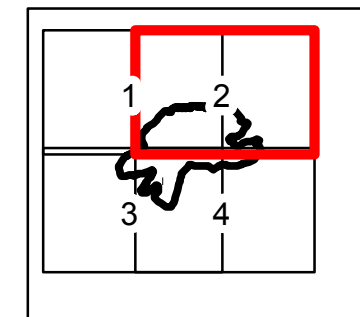
-  Division
-  Drop Point
-  Uncontrolled Fire Edge
-  Management Action Point



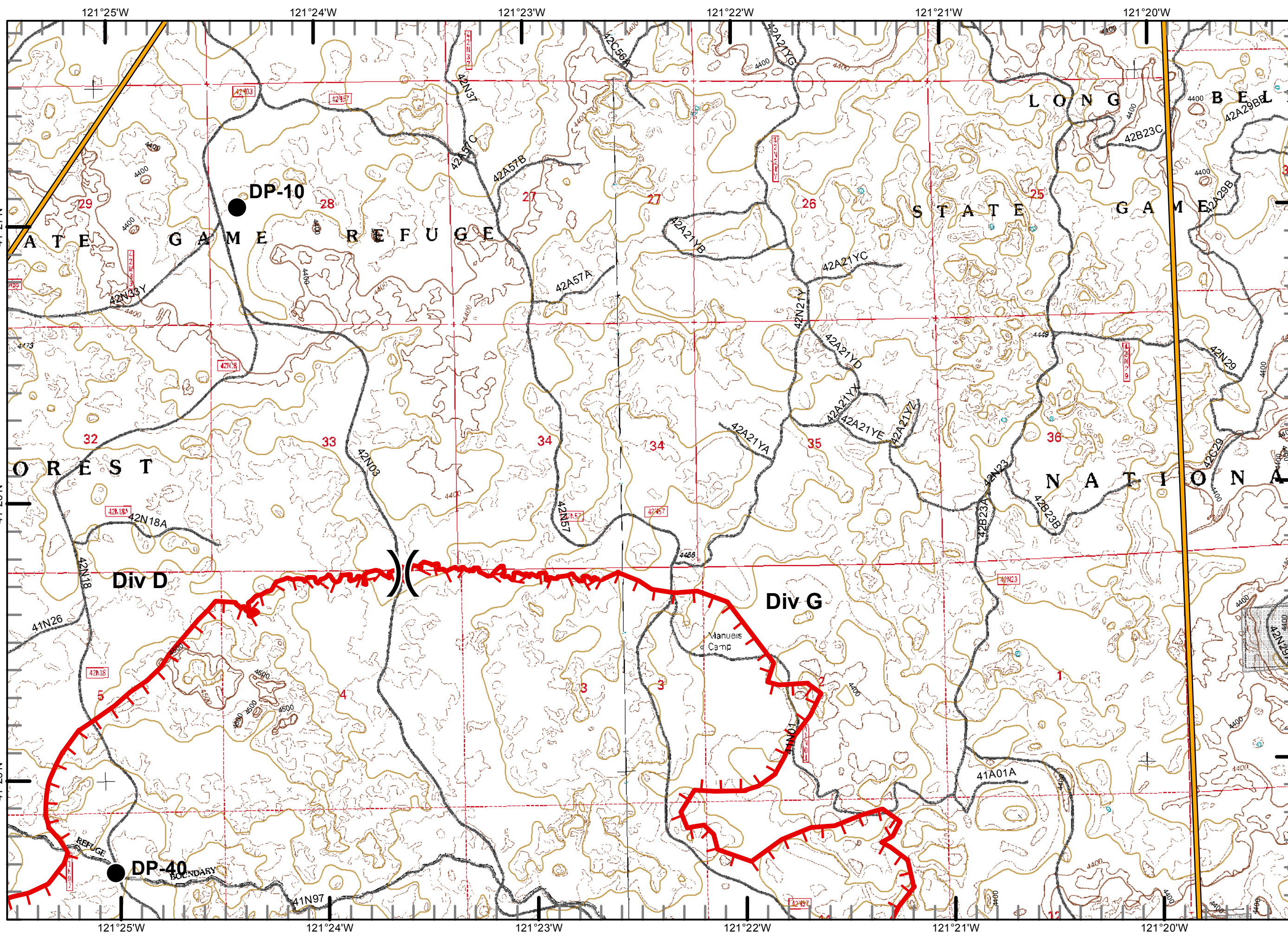
Nor Cal 1
August 02, 2015
0008 Hours

Frog Incident
CA-MDF 00570
8/3/2015
IAP
Night shift
4,213 ac
Pg2

- Division
- Drop Point
- Uncontrolled Fire Edge
- Management Action Point
- Proposed Dozer Line

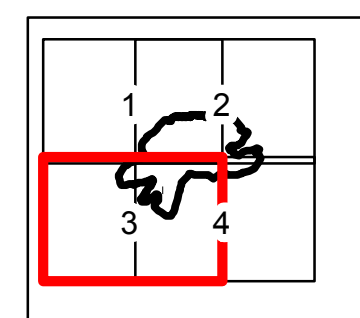


Nor Cal 1
August 02, 2015
0008 Hours

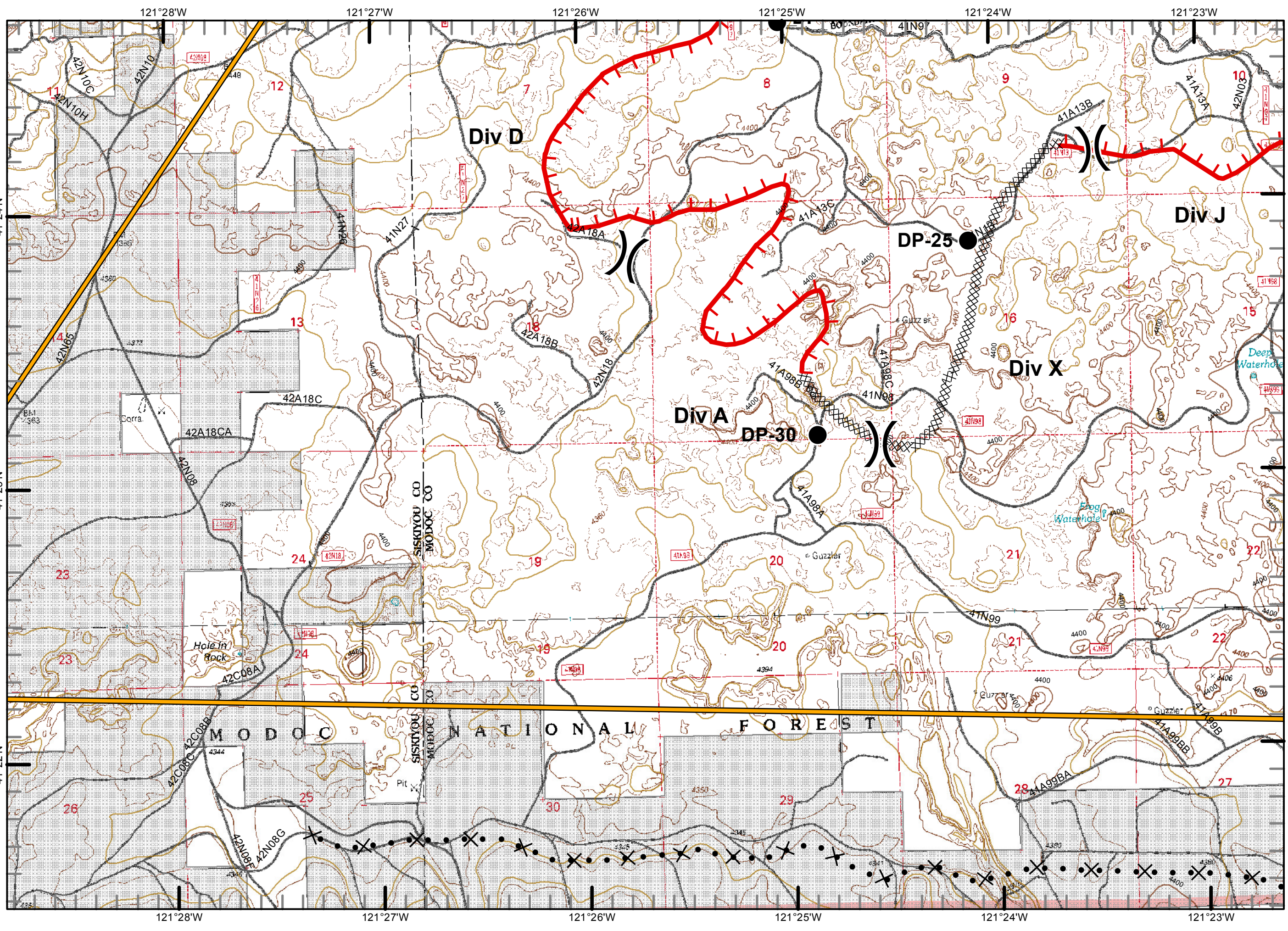


Frog Incident
CA-MDF 00570
8/3/2015
IAP
Night shift
4,213 ac
Pg3

- Division
- Drop Point
- Uncontrolled Fire Edge
- Completed Dozer Line
- Management Action Point
- Proposed Dozer Line

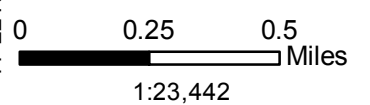
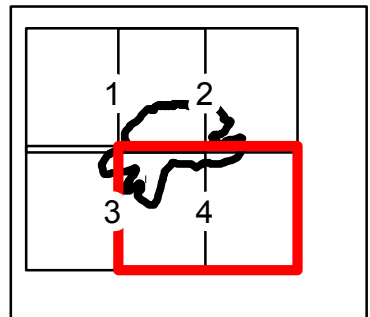


Nor Cal 1
August 02, 2015
0008 Hours



Frog Incident
 CA-MDF 00570
 8/3/2015
 IAP
 Night shift
 4,213 ac
 Pg4

- Division
- Drop Point
- Water Source
- Uncontrolled Fire Edge
- Completed Dozer Line
- Management Action Point
- Proposed Dozer Line



Nor Cal 1
 August 02, 2015
 0008 Hours

