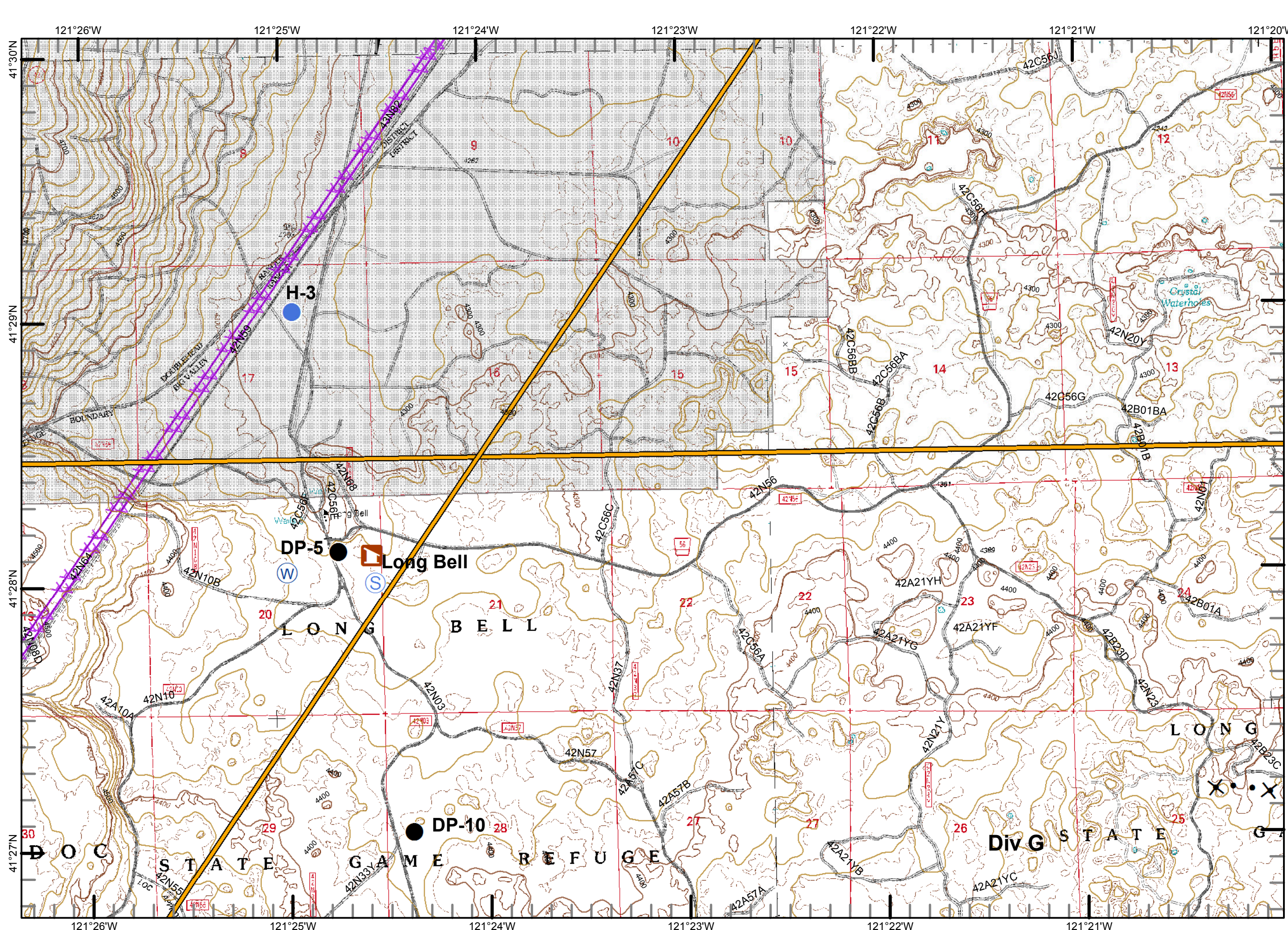
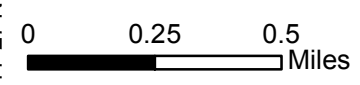
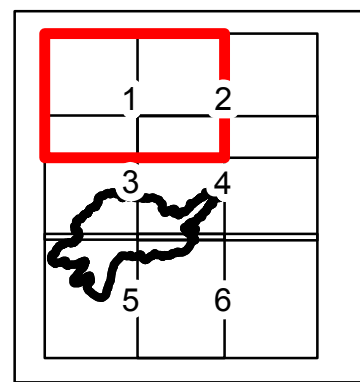


Frog Incident
 CA-MDF 00570
 8/5/2015
 IAP
 Night shift
 4,633 ac
 Pg1



- Railroad
- Drop Point
- Helispot
- Staging Area
- Water Source
- Management Action Point
- Proposed Dozer Line
- Private

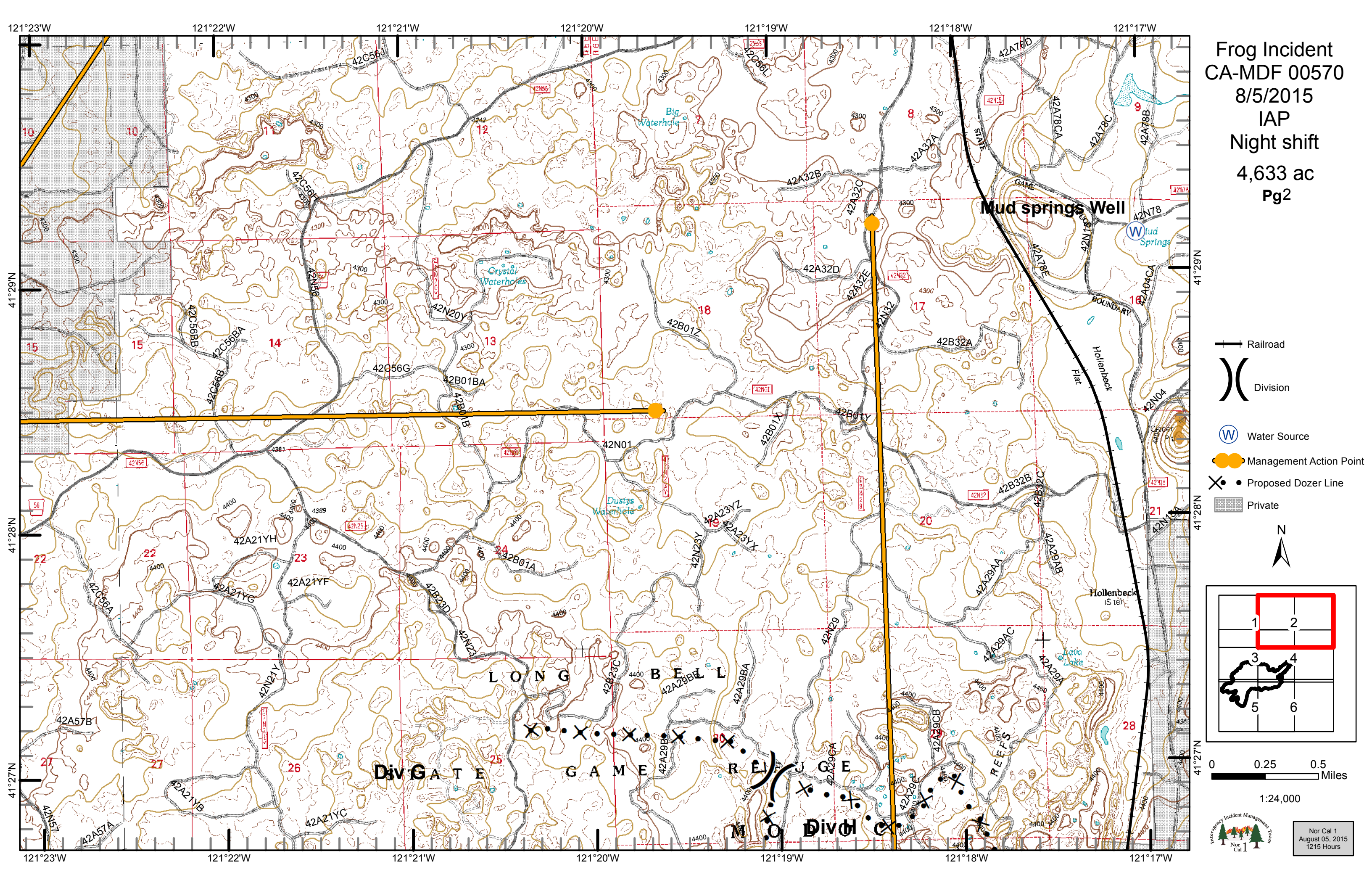


1:24,000

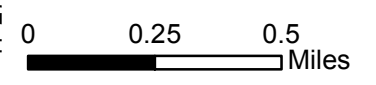
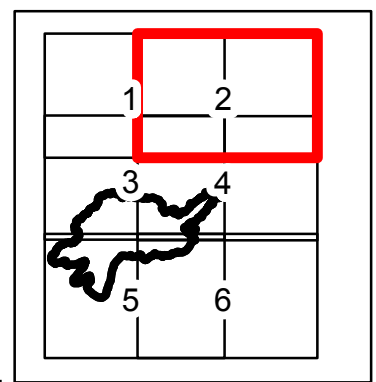


Nor Cal 1
 August 05, 2015
 1215 Hours

Frog Incident
CA-MDF 00570
8/5/2015
IAP
Night shift
4,633 ac
Pg2



- Railroad
- Division
- Water Source
- Management Action Point
- Proposed Dozer Line
- Private



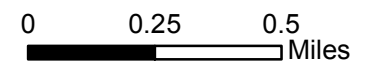
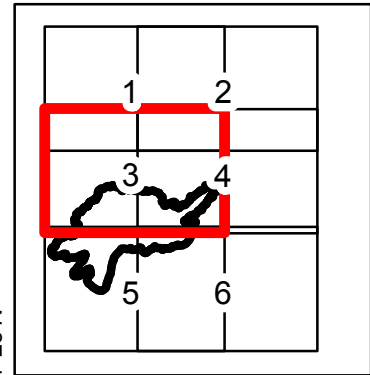
1:24,000



Nor Cal 1
August 05, 2015
1215 Hours

Frog Incident
CA-MDF 00570
8/5/2015
IAP
Night shift
4,633 ac
Pg3

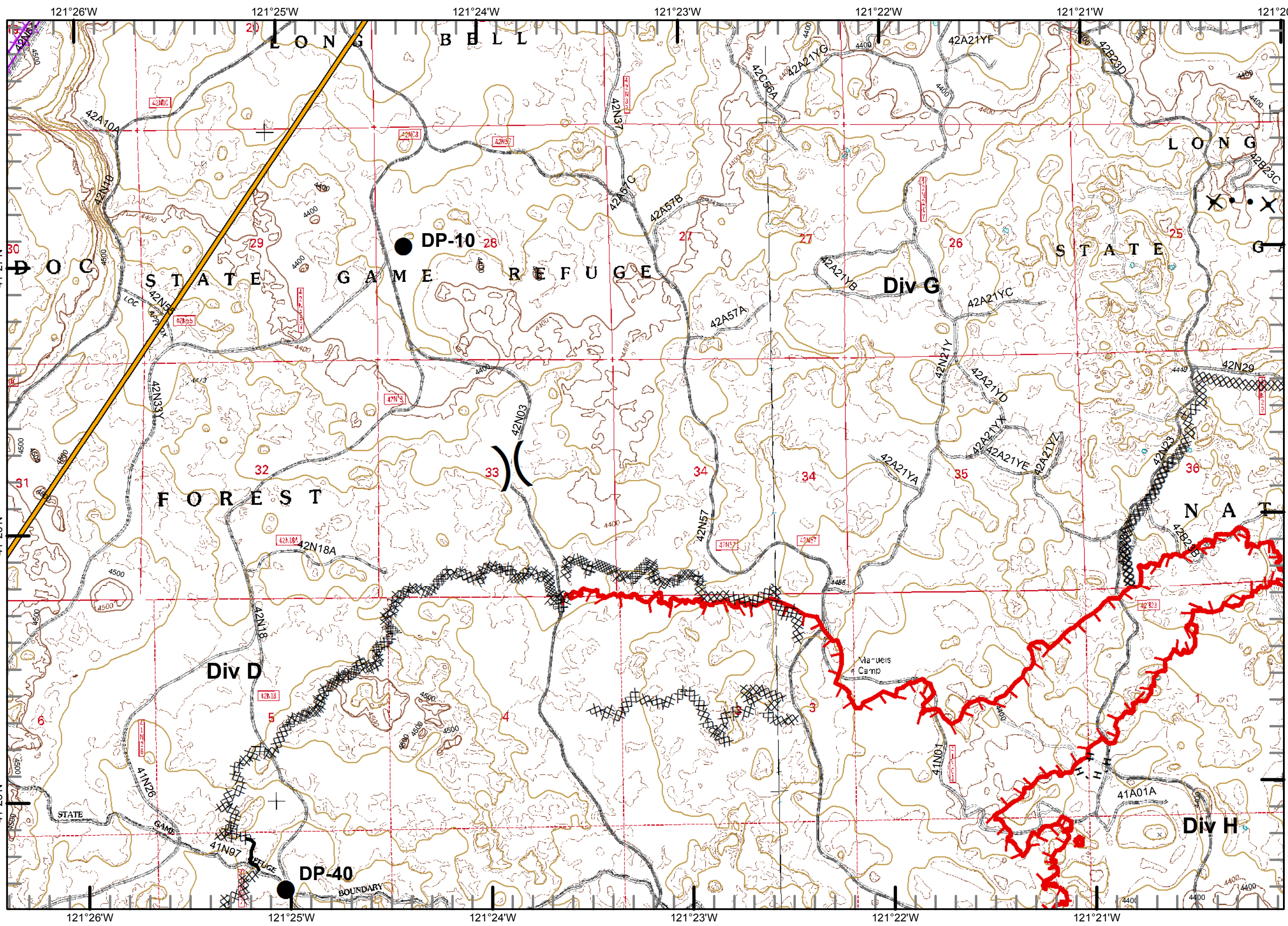
- Division
- Drop Point
- Uncontrolled Fire Edge
- Completed Dozer Line
- Completed Line
- H - H Hand Line
- Management Action Point
- Proposed Dozer Line



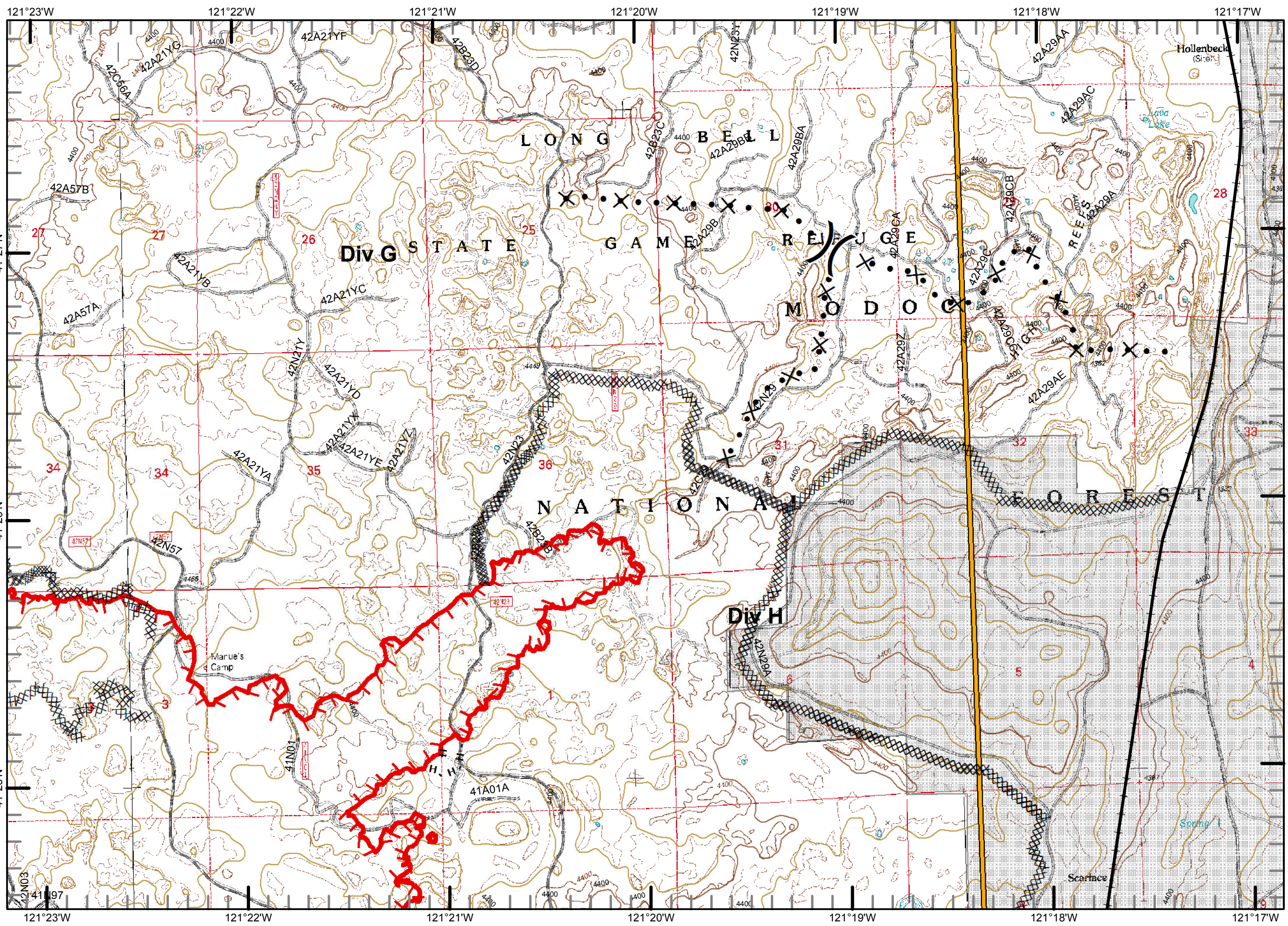
1:24,000



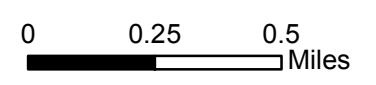
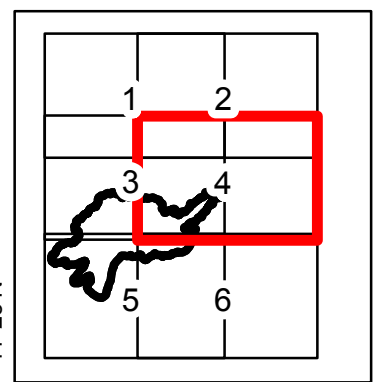
Nor Cal 1
August 05, 2015
1215 Hours



Frog Incident
 CA-MDF 00570
 8/5/2015
 IAP
 Night shift
 4,633 ac
 Pg4



- Railroad
- Division
- Uncontrolled Fire Edge
- Completed Dozer Line
- H - H Hand Line
- Management Action Point
- Proposed Dozer Line
- Private



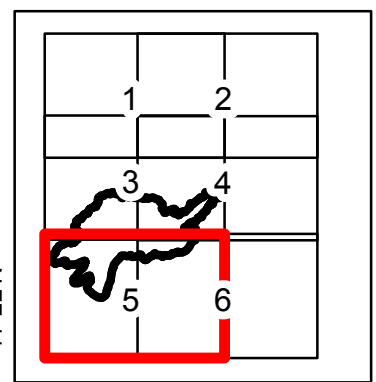
1:24,000



Nor Cal 1
 August 05, 2015
 1215 Hours

Frog Incident
 CA-MDF 00570
 8/5/2015
 IAP
 Night shift
 4,633 ac
 Pg5

- Division
- Drop Point
- Helispot
- Water Source
- Uncontrolled Fire Edge
- Completed Dozer Line
- Completed Line
- H - H Hand Line
- Management Action Point
- Private

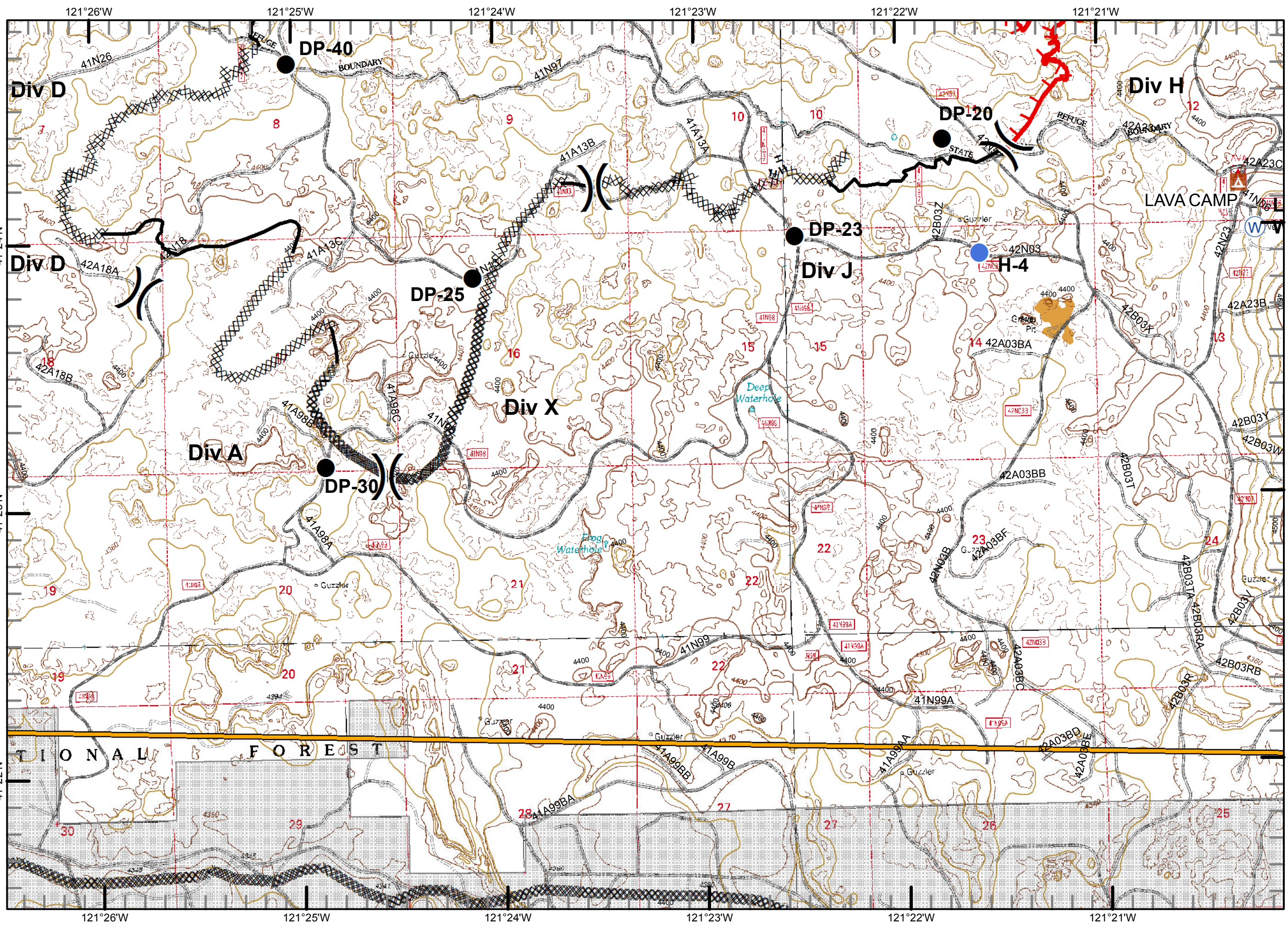


0 0.25 0.5 Miles

1:24,000

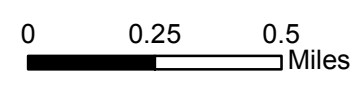
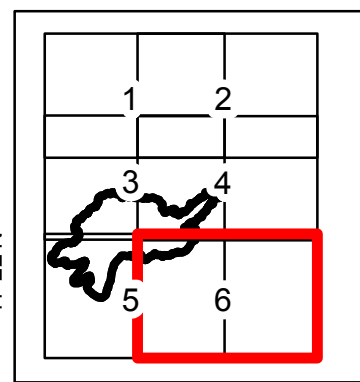


Nor Cal 1
 August 05, 2015
 1215 Hours



Frog Incident
 CA-MDF 00570
 8/5/2015
 IAP
 Night shift
 4,633 ac
 Pg6

-  Railroad
-  Division
-  Drop Point
-  Helispot
-  Water Source
-  Uncontrolled Fire Edge
-  Completed Dozer Line
-  Completed Line
-  H - H Hand Line
-  Management Action Point
-  Private



1:24,000



Nor Cal 1
 August 05, 2015
 1215 Hours

