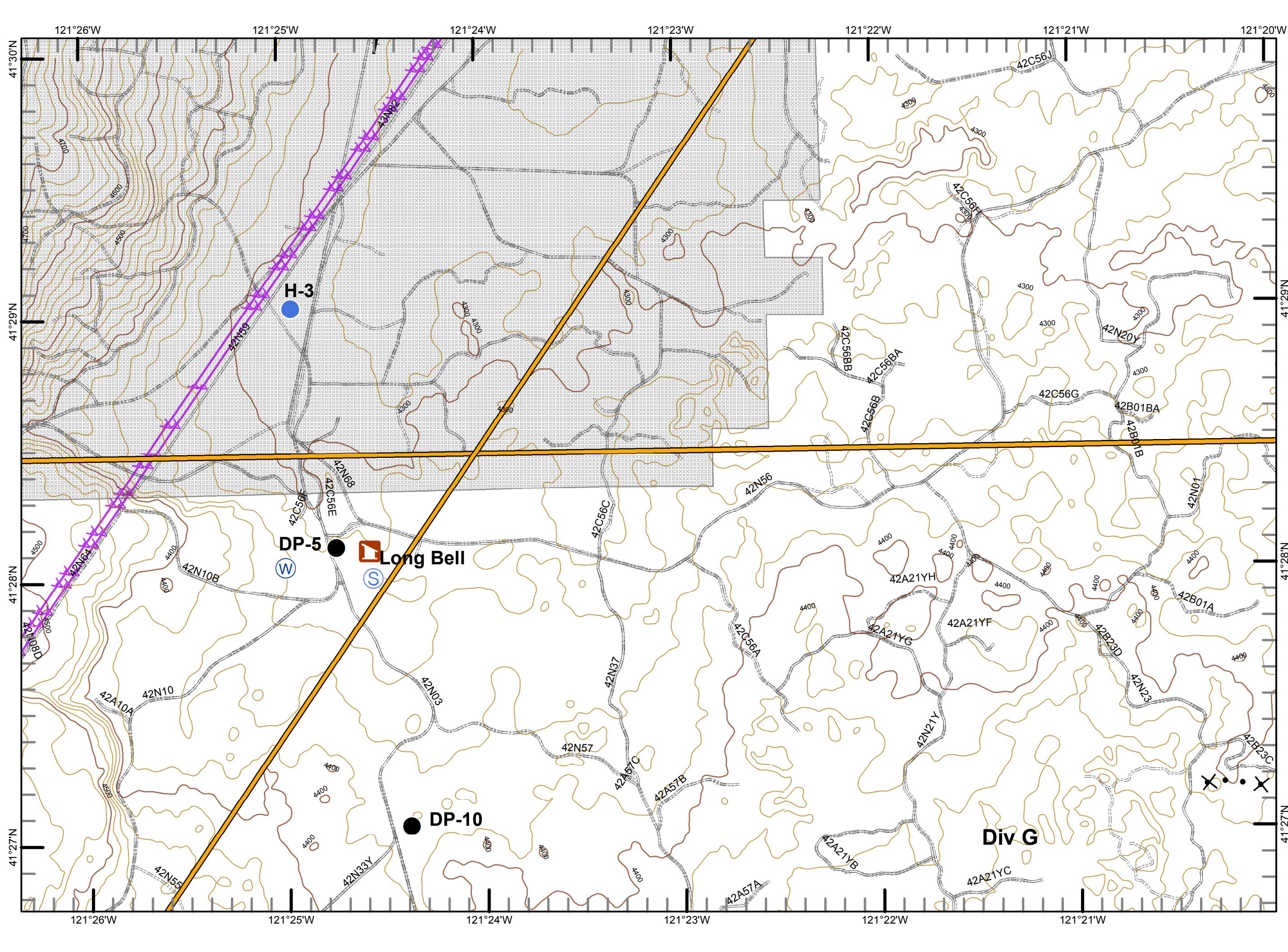
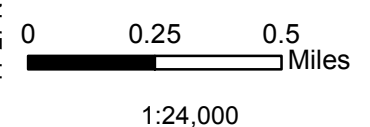
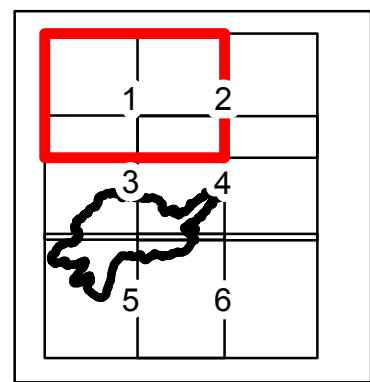


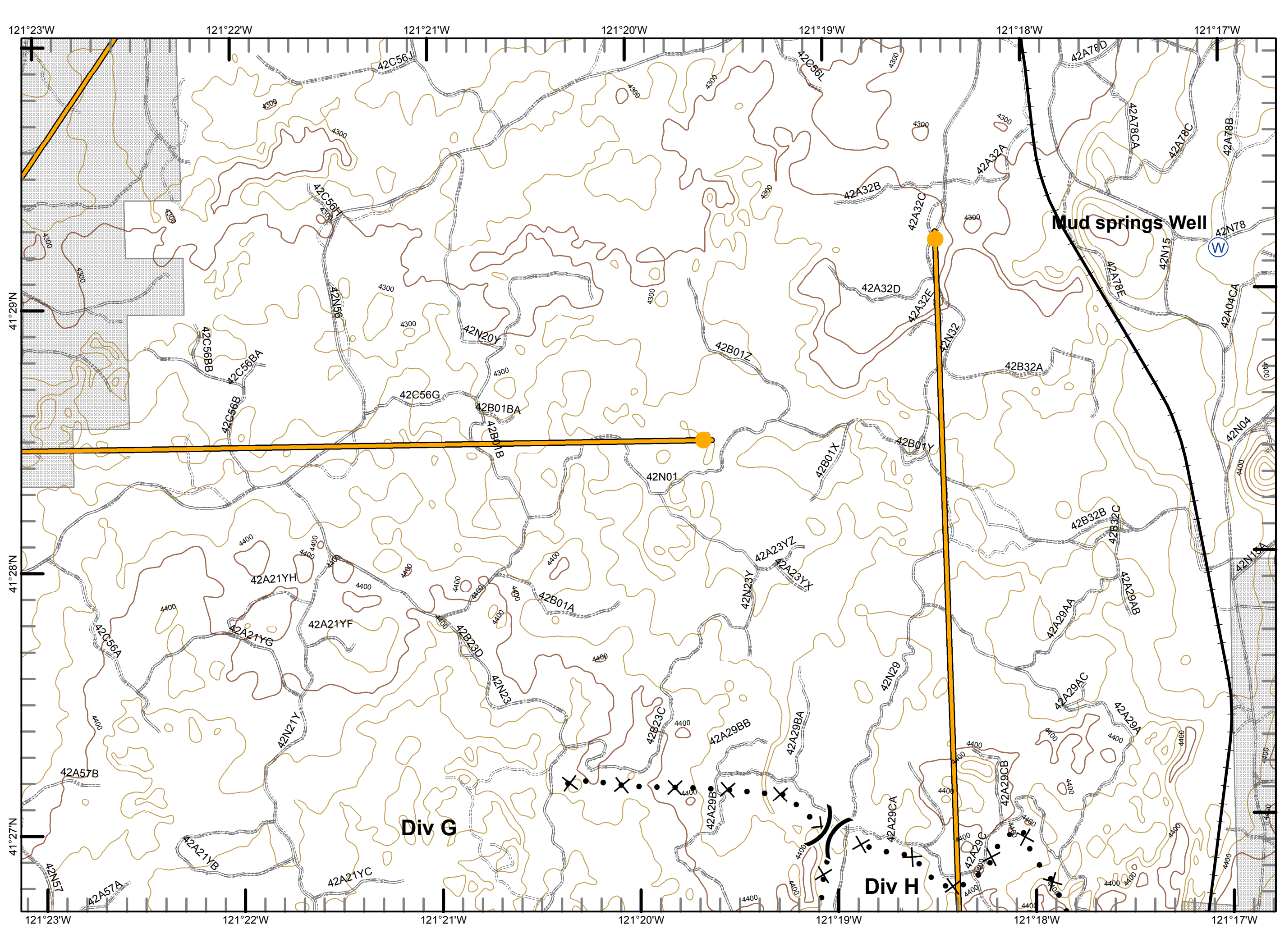
Frog Incident
 CA-MDF 00570
 8/5/2015
 IAP
 Day shift
 4,633 ac
 Pg1



- Railroad
- Drop Point
- Helispot
- Staging Area
- Water Source
- Management Action Point
- Proposed Dozer Line
- Private



Frog Incident
 CA-MDF 00570
 8/5/2015
 IAP
 Day shift
 4,633 ac
 Pg2



⚓ Railroad

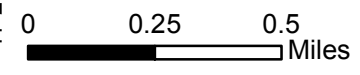
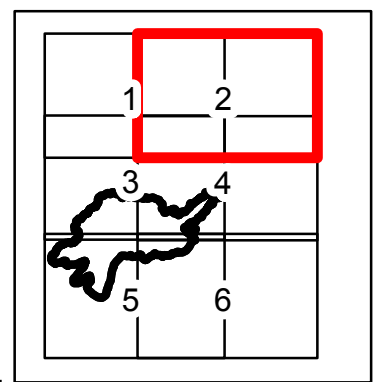
() Division

(W) Water Source

● Management Action Point

⊗ Proposed Dozer Line

▨ Private



1:24,000



Nor Cal 1
 August 04, 2015
 2230 Hours

Frog Incident
CA-MDF 00570
8/5/2015
IAP
Day shift
4,633 ac
Pg3

() Division

● Drop Point

└ Uncontrolled Fire Edge

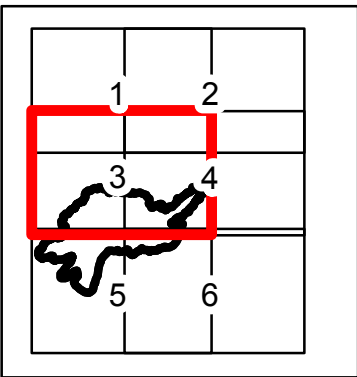
XXXXX Completed Dozer Line

— Completed Line

H - H Hand Line

● Management Action Point

⊗ Proposed Dozer Line

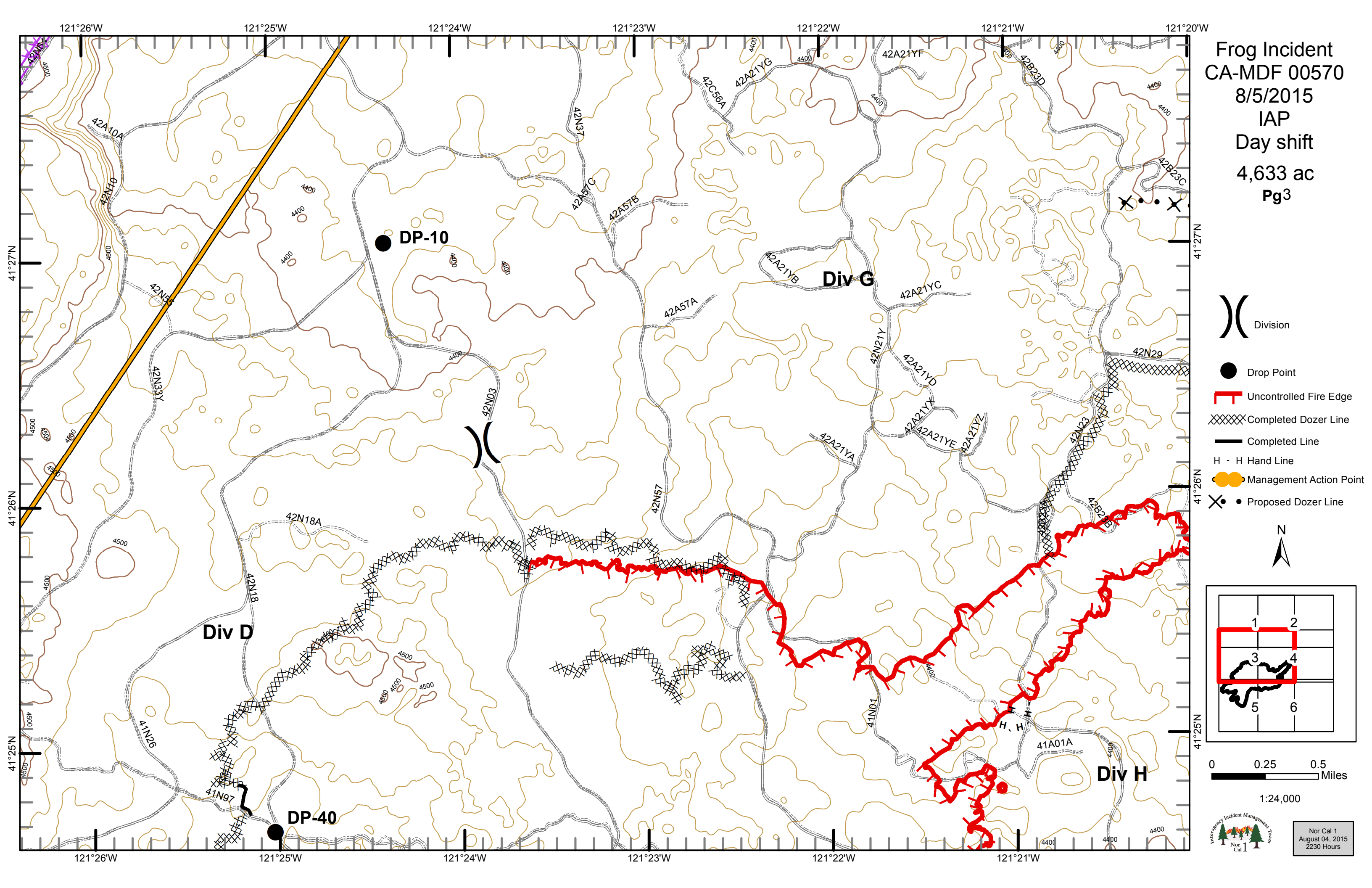


0 0.25 0.5 Miles

1:24,000

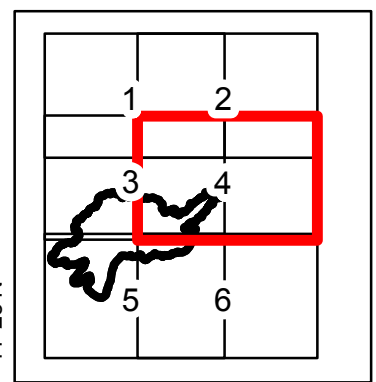


Nor Cal 1
August 04, 2015
2230 Hours



Frog Incident
 CA-MDF 00570
 8/5/2015
 IAP
 Day shift
 4,633 ac
 Pg4

-  Railroad
-  Division
-  Uncontrolled Fire Edge
-  Completed Dozer Line
-  H - H Hand Line
-  Management Action Point
-  Proposed Dozer Line
-  Private

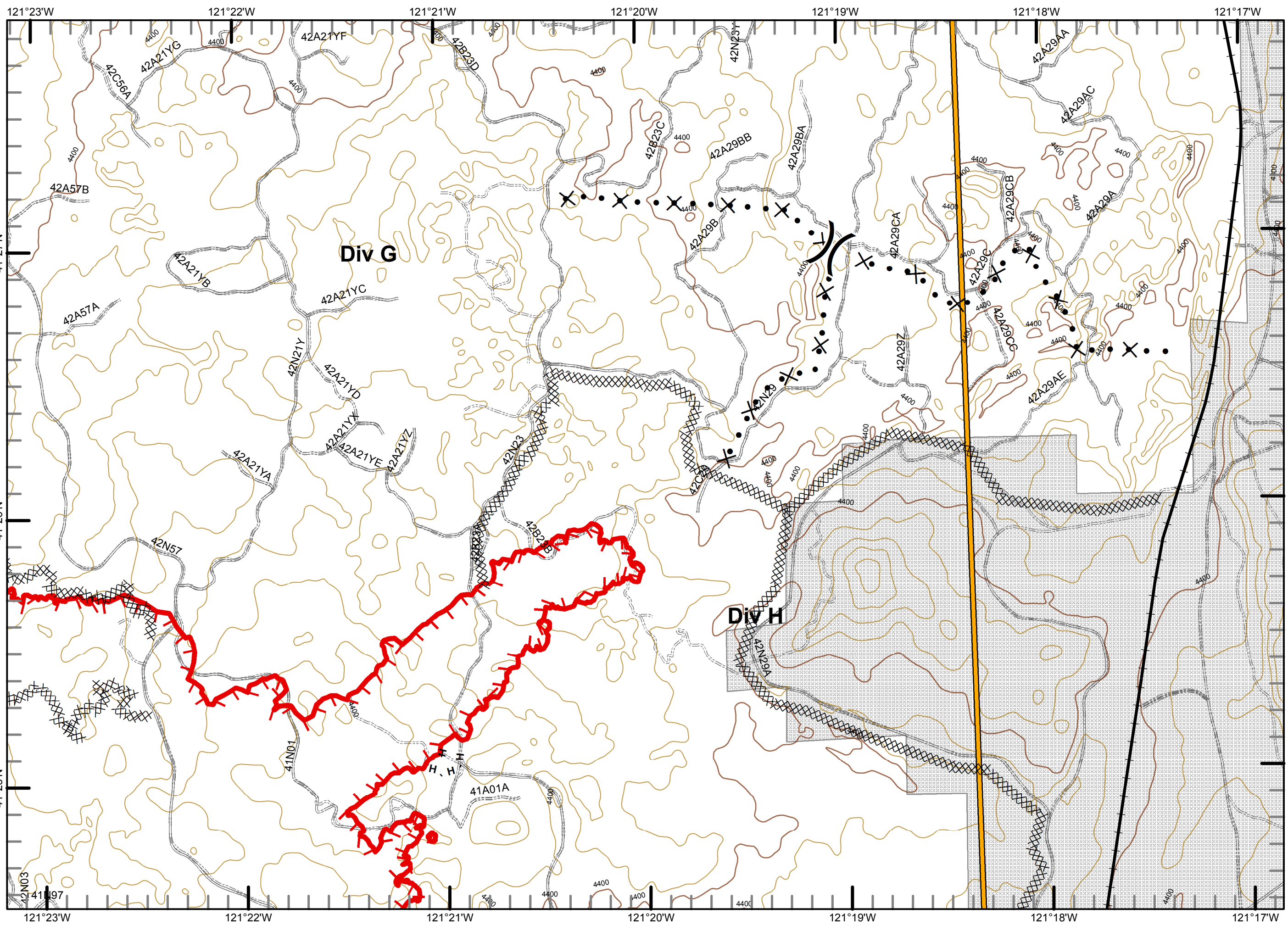


0 0.25 0.5
 Miles

1:24,000

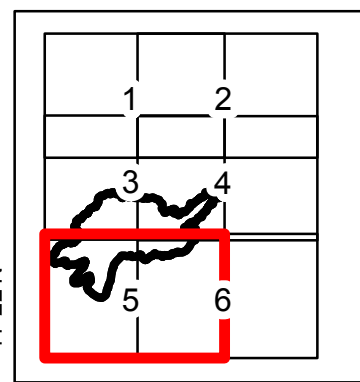


Nor Cal 1
 August 04, 2015
 2230 Hours



Frog Incident
 CA-MDF 00570
 8/5/2015
 IAP
 Day shift
 4,633 ac
 Pg5

- Division
- Drop Point
- Helispot
- Water Source
- Uncontrolled Fire Edge
- Completed Dozer Line
- Completed Line
- H - H Hand Line
- Management Action Point
- Private

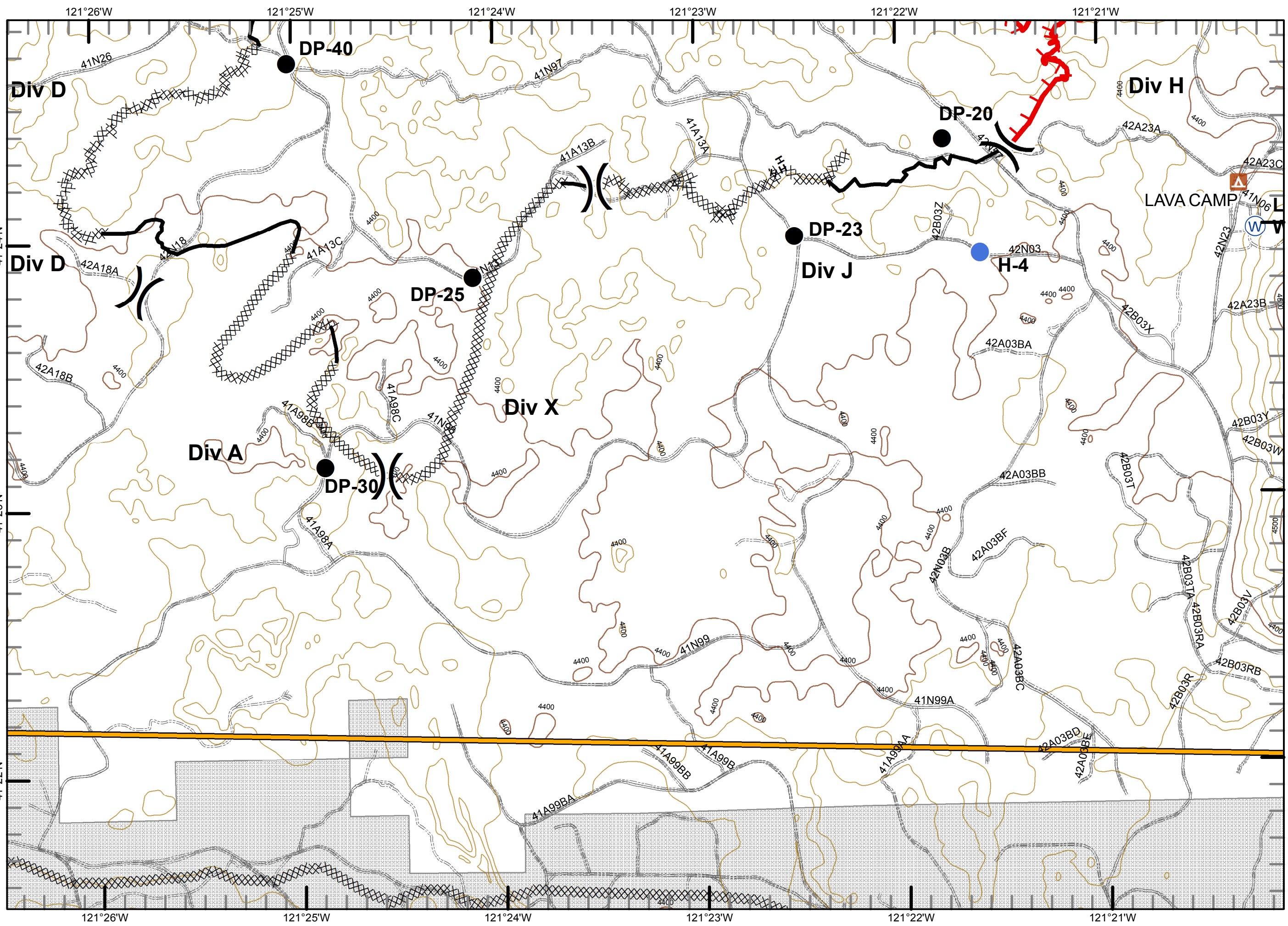


0 0.25 0.5 Miles

1:24,000

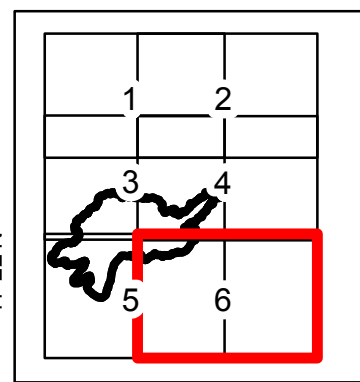


Nor Cal 1
 August 04, 2015
 2230 Hours



Frog Incident
 CA-MDF 00570
 8/5/2015
 IAP
 Day shift
 4,633 ac
 Pg6

-  Railroad
-  Division
-  Drop Point
-  Helispot
-  Water Source
-  Uncontrolled Fire Edge
-  Completed Dozer Line
-  Completed Line
-  H - H Hand Line
-  Management Action Point
-  Private



0 0.25 0.5 Miles

1:24,000



Nor Cal 1
 August 04, 2015
 2230 Hours

