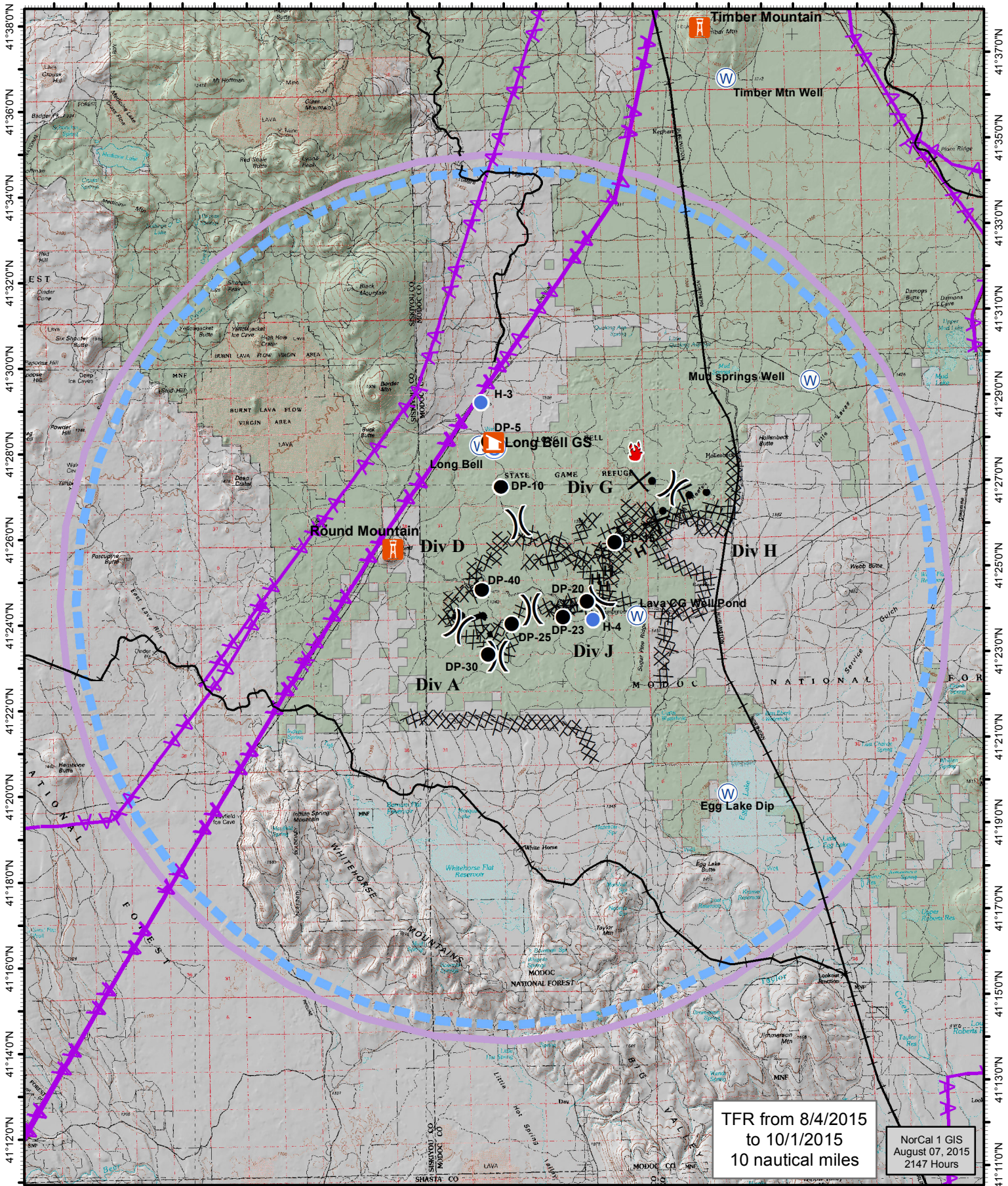


121°38'0"W 121°36'0"W 121°34'0"W 121°32'0"W 121°30'0"W 121°28'0"W 121°26'0"W 121°24'0"W 121°22'0"W 121°20'0"W 121°18'0"W 121°16'0"W 121°14'0"W 121°12'0"W 121°10'0"W



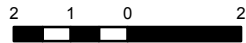


TFR from 8/4/2015
to 10/1/2015
10 nautical miles

NorCal 1 GIS
August 07, 2015
2147 Hours

Air Ops Map
Frog Fire
CA-MDF-00570
August 8, 2015
Day Shift
4,860 Acres

-  TFR
-  Transmission Line / Gas Line
-  Division
-  Crystal Fire
-  Drop Point
-  Helispot
-  Staging Area
-  Water Source
-  Proposed Dozer Line
-  Completed Dozer Line
-  Completed Line
-  Hand Line
-  Railroad


 Northern California Incident Management Team
 NorCal 1


 Miles

Label	X	Y
H-1 (Frog Helibase)	121° 15.970' W	41° 40.671' N
H-2 (ICP, Type 2)	120° 58.758' W	41° 30.195' N
H-3 (Type 2)	121° 24.950' W	41° 29.029' N
H-4 (Type 2)	121° 21.598' W	41° 23.910' N
ICP	120° 58.416' W	41° 29.762' N
Happy Camp Fire Station (CalFire)	121° 8.494' W	41° 27.044' N
DP-5	121° 24.740' W	41° 28.118' N
DP-10	121° 24.386' W	41° 27.055' N
DP-15	121° 20.876' W	41° 25.716' N
DP-20	121° 21.774' W	41° 24.337' N
DP-23	121° 22.517' W	41° 23.983' N
DP-40	121° 25.515' W	41° 24.776' N
Timber Mtn Well	121° 17.138' W	41° 36.514' N
Mud Springs Well	121° 14.715' W	41° 29.428' N
Lava CG Well/Pond	121° 20.229' W	41° 23.987' N
Long Bell	121° 24.556' W	41° 27.999' N
Egg Lake Dip	121° 17.524' W	41° 19.797' N
Water Source	121° 24.998' W	41° 28.043' N
Crystal Fire	121° 20.163' W	41° 27.855' N