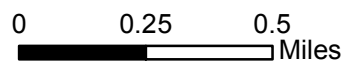
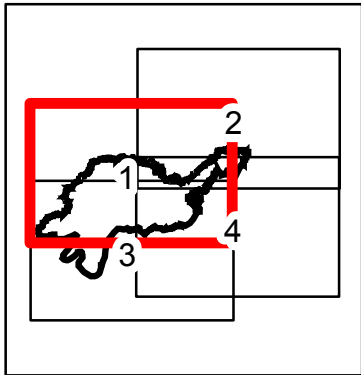


Frog Incident  
 CA-MDF 00570  
 8/9-8/11/2015  
 Extended

4,860 ac  
 Pg1

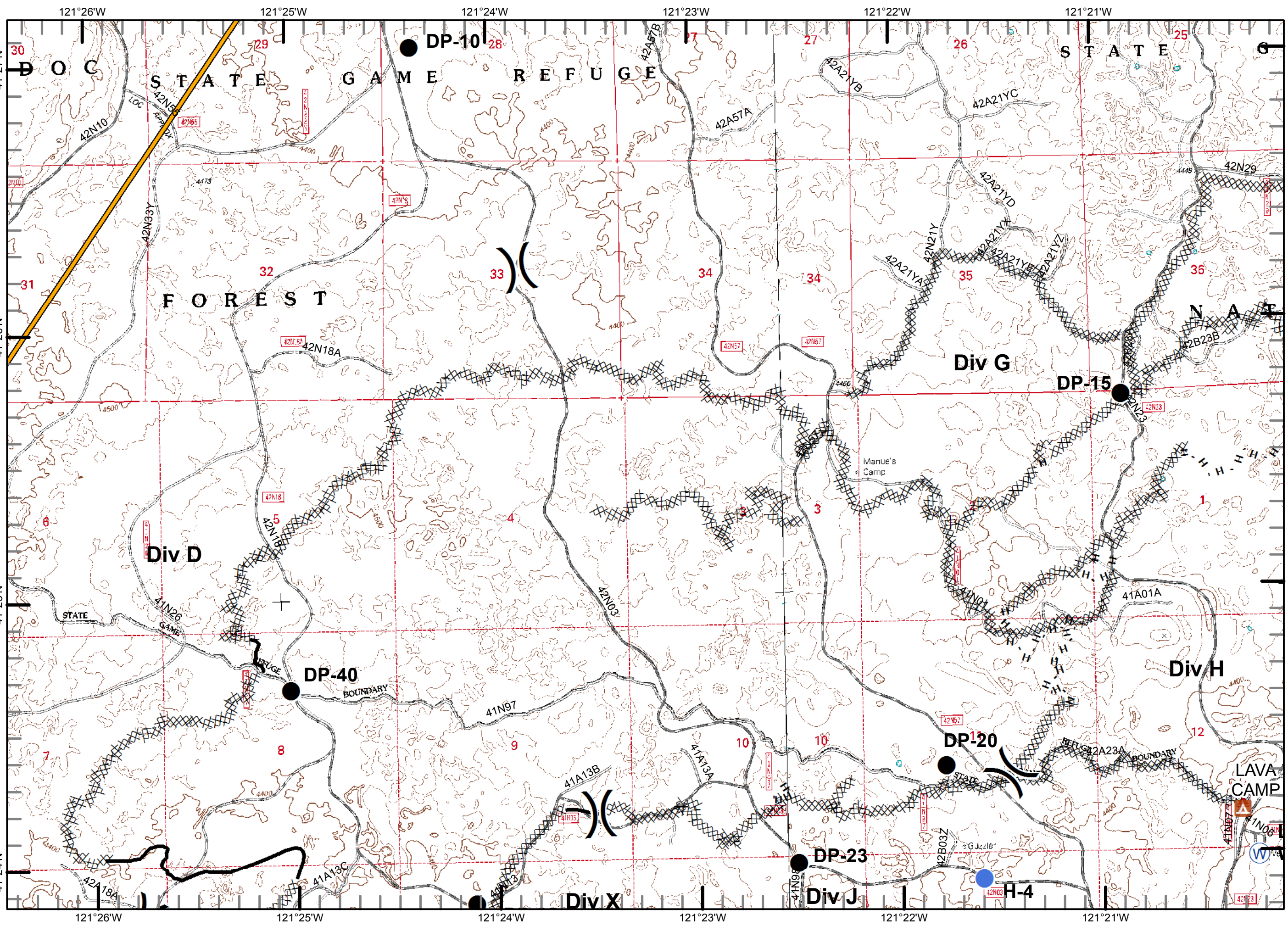
-  Division
-  Drop Point
-  Helispot
-  Water Source
-  Completed Dozer Line
-  Completed Line
-  H - H Hand Line
-  Management Action Point

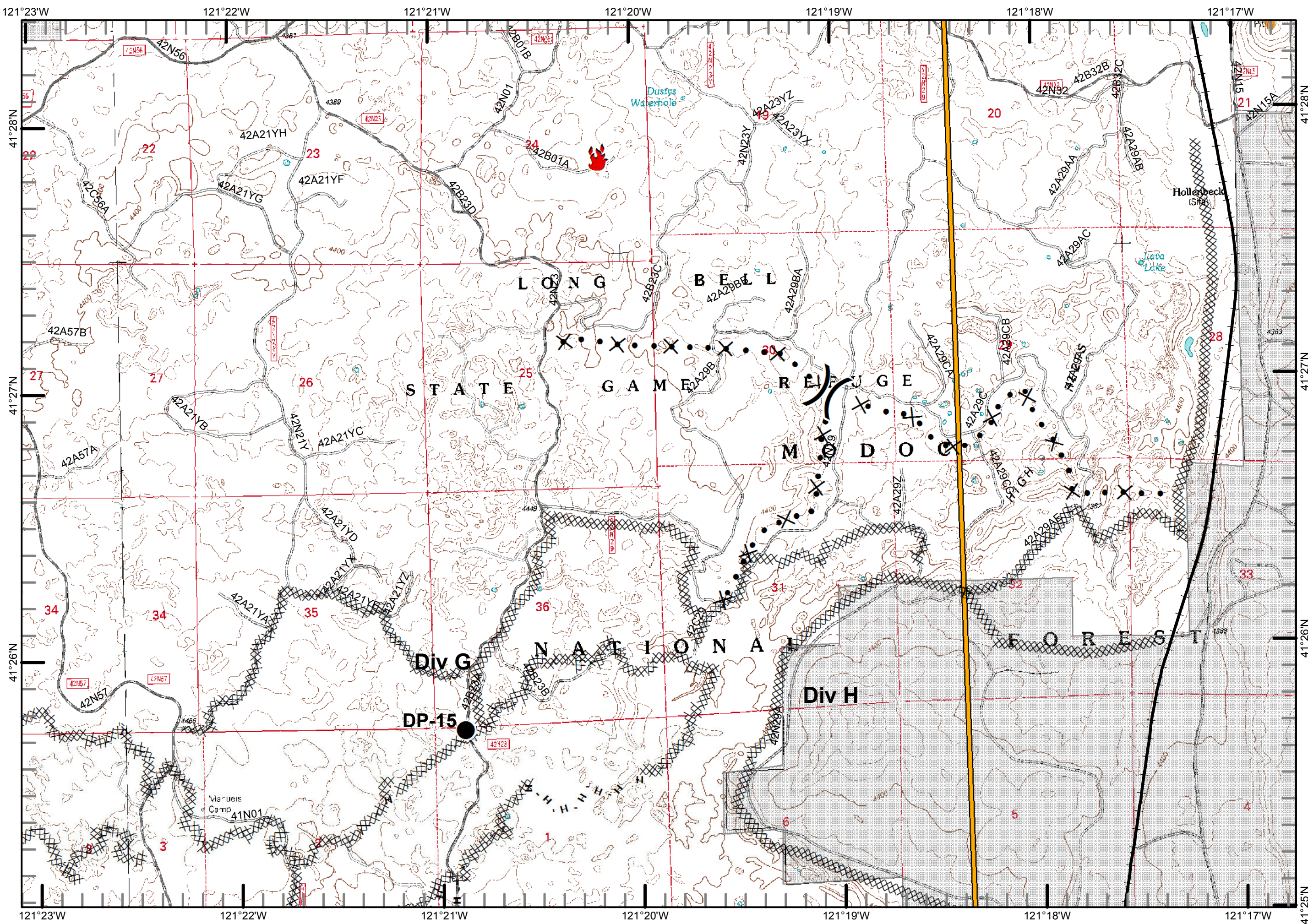


1:24,000



Nor Cal 1  
 August 07, 2015  
 2050 Hours

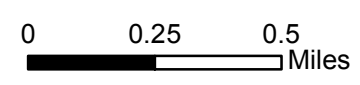
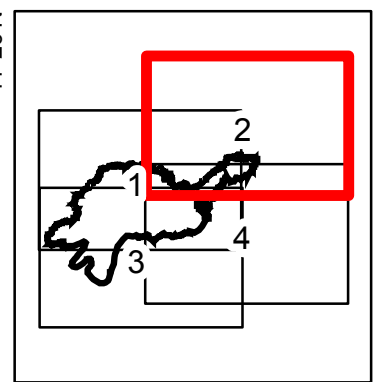




**Frog Incident**  
**CA-MDF 00570**  
**8/9-8/11/2015**  
**Extended**

**4,860 ac**  
**Pg2**

- Division
- Drop Point
- Fire Location
- Completed Dozer Line
- H - H Hand Line
- Management Action Point
- Proposed Dozer Line
- Railroad
- Private



1:24,000

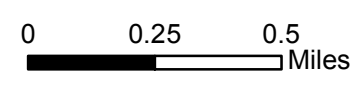
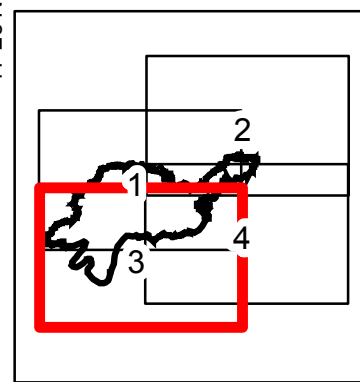


Nor Cal 1  
 August 07, 2015  
 2050 Hours

Frog Incident  
 CA-MDF 00570  
 8/9-8/11/2015  
 Extended

4,860 ac  
 Pg3

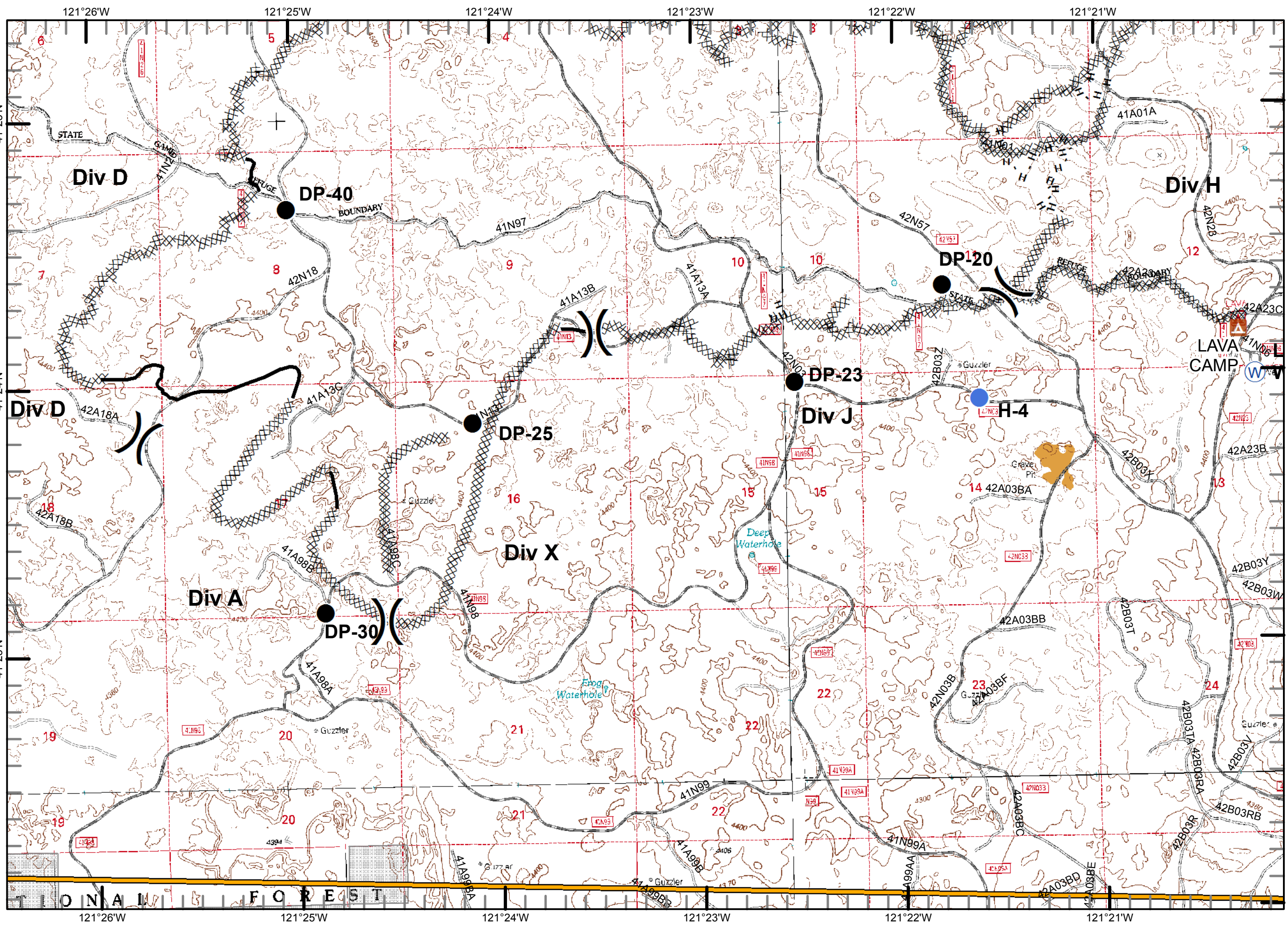
- Division
- Drop Point
- Helispot
- Water Source
- Completed Dozer Line
- Completed Line
- H - H Hand Line
- Management Action Point
- Private



1:24,000






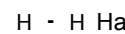





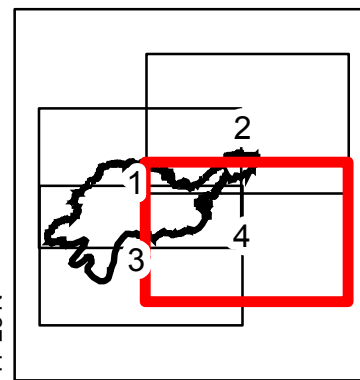
Nor Cal 1  
 August 07, 2015  
 2050 Hours



Frog Incident  
 CA-MDF 00570  
 8/9-8/11/2015  
 Extended

4,860 ac  
 Pg4

-  Division
-  Drop Point
-  Helispot
-  Water Source
-  Completed Dozer Line
-  H - H Hand Line
-  Management Action Point
-  Railroad
-  Private



0 0.25 0.5 Miles

1:24,000

