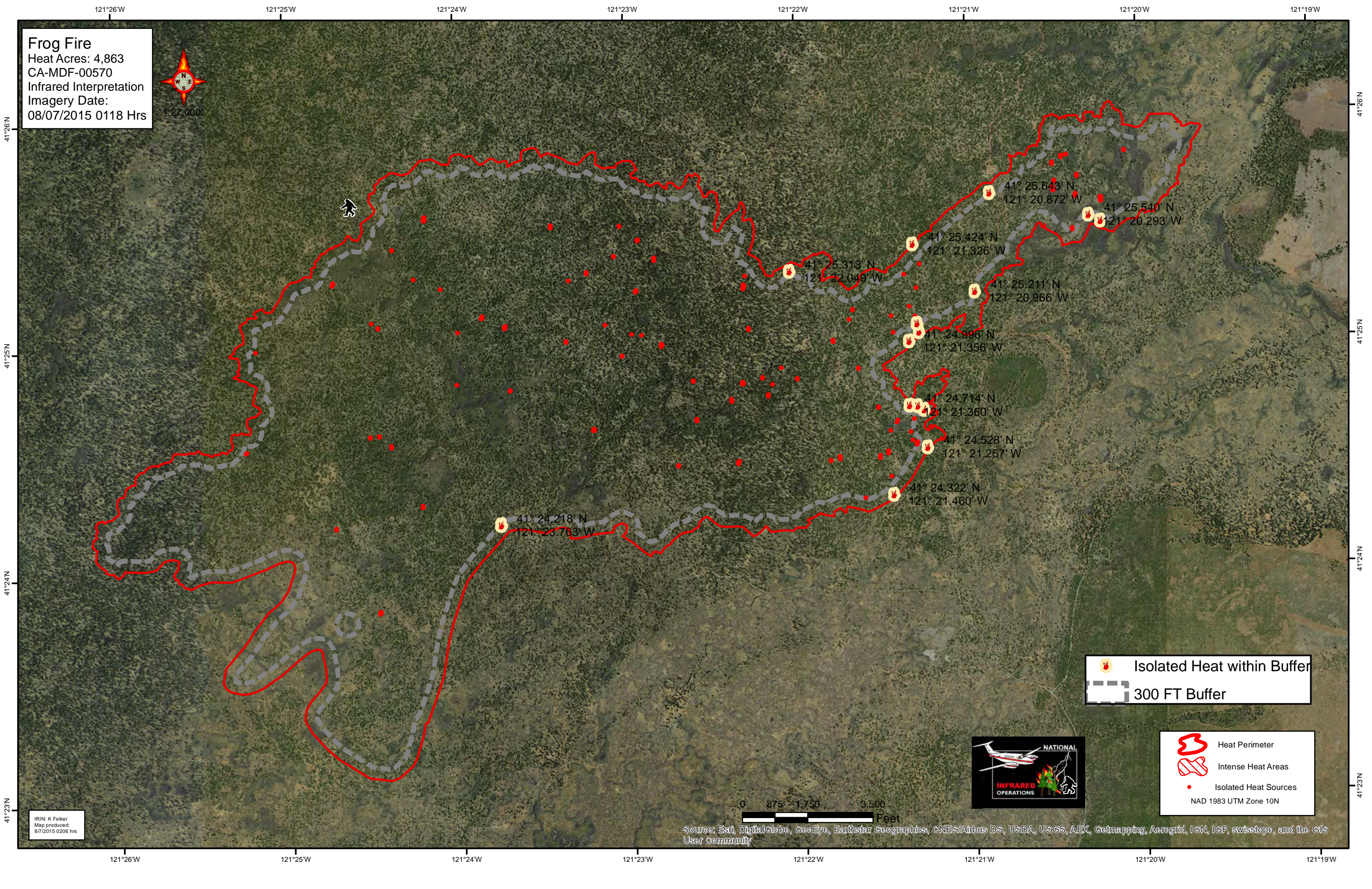


Frog Fire
 Heat Acres: 4,863
 CA-MDF-00570
 Infrared Interpretation
 Imagery Date:
 08/07/2015 0118 Hrs



- 41° 25.643' N
121° 20.872' W
- 41° 25.540' N
121° 20.293' W
- 41° 25.424' N
121° 21.326' W
- 41° 25.313' N
121° 22.049' W
- 41° 25.211' N
121° 20.966' W
- 41° 24.996' N
121° 21.358' W
- 41° 24.714' N
121° 21.360' W
- 41° 24.528' N
121° 21.257' W
- 41° 24.322' N
121° 21.460' W
- 41° 24.218' N
121° 23.763' W

Isolated Heat within Buffer
 300 FT Buffer

Heat Perimeter
 Intense Heat Areas
 Isolated Heat Sources
 NAD 1983 UTM Zone 10N



0 875 1,750 3,500 Feet

Source: Esri, DigitalGlobe, GeoEye, Earthstar Geographics, CNES/Airbus DS, USDA, USGS, AEX, Getmapping, Aerogrid, IGN, IGP, swisstopo, and the GIS User Community

IRIN: K Felker
 Map produced:
 8/7/2015 0206 hrs