

July 31, 2015

WFDSS - FSPRO PROBABILITY: MDF Frog Fire (2015-CAMDF-000570)

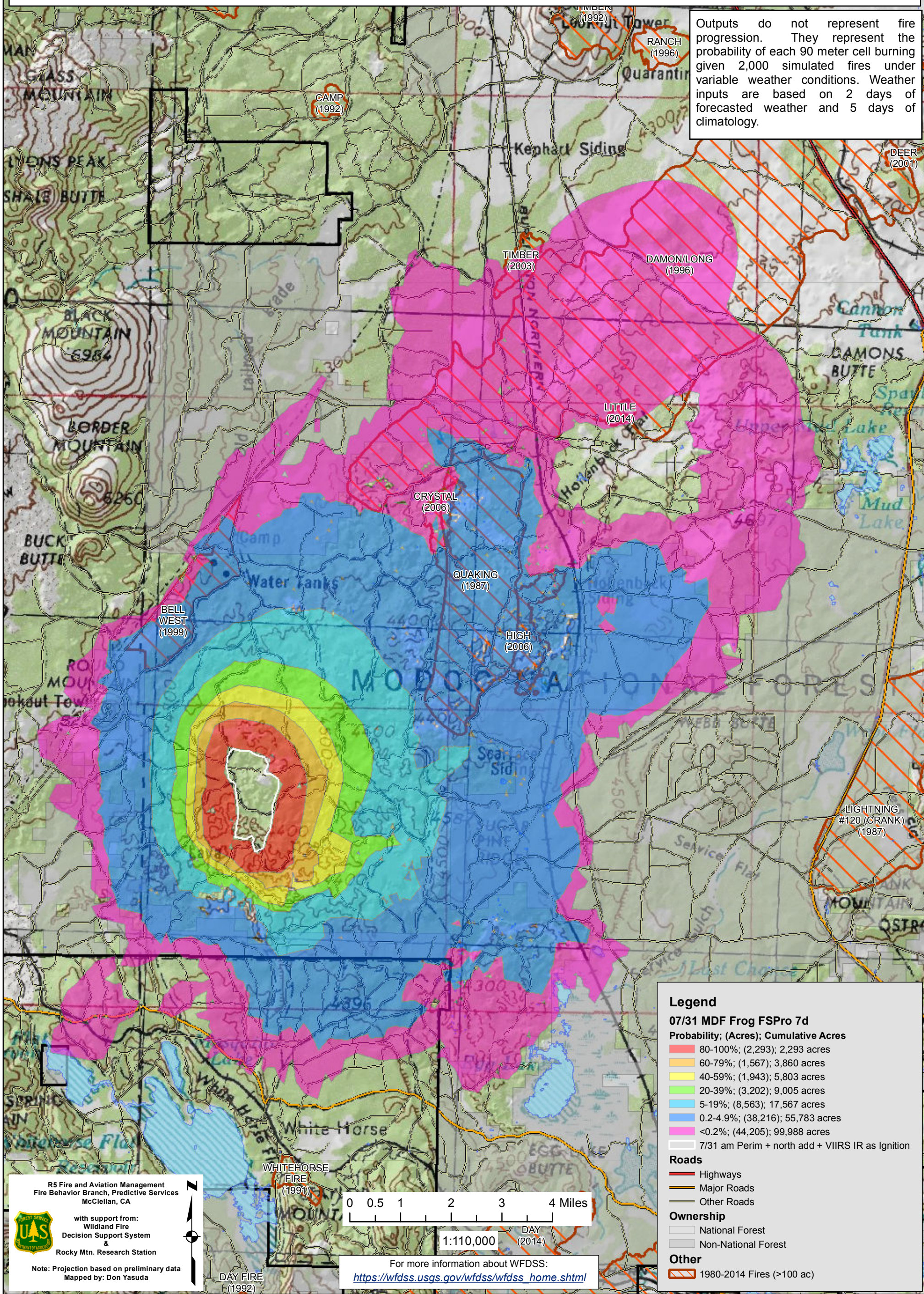
07/31 - 7 DAYS - 90m Res; 2000 Fire Sim

ERC: 40221 - ROUND MOUNTAIN (4.1 miles); WINDS: 40221 - ROUND MOUNTAIN (4.1 miles)

File: 7.31 Initial 7day FSPRO; Analyst: Clint Isbell

Notes: 7.31 initial FSPRO run. Analysis is for 7 days with 2000 fires using Round Mountain for ERC and winds. Ignition file is based on 7.31 am perimeter with additional perimeter added to the north to account for north spread and VIIRS heat signature to better update 7.31 am perimeter. No barrier or mask files. **Expect spread into low probability surfaces early in the analysis period due to extreme drought.** Model assumes NO suppression action.

Outputs do not represent fire progression. They represent the probability of each 90 meter cell burning given 2,000 simulated fires under variable weather conditions. Weather inputs are based on 2 days of forecasted weather and 5 days of climatology.



Legend

07/31 MDF Frog FSPRO 7d

Probability; (Acres); Cumulative Acres

- 80-100%; (2,293); 2,293 acres
- 60-79%; (1,567); 3,860 acres
- 40-59%; (1,943); 5,803 acres
- 20-39%; (3,202); 9,005 acres
- 5-19%; (8,563); 17,567 acres
- 0.2-4.9%; (38,216); 55,783 acres
- <0.2%; (44,205); 99,988 acres

7/31 am Perim + north add + VIIRS IR as Ignition

Roads

- Highways
- Major Roads
- Other Roads

Ownership

- National Forest
- Non-National Forest

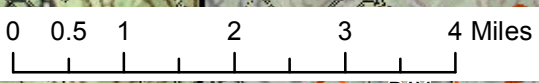
Other

- 1980-2014 Fires (>100 ac)

R5 Fire and Aviation Management
Fire Behavior Branch, Predictive Services
McClellan, CA

with support from:
Wildland Fire
Decision Support System
&
Rocky Mtn. Research Station

Note: Projection based on preliminary data
Mapped by: Don Yasuda



1:110,000 DAY (2014)

For more information about WFDSS:
https://wfdss.usgs.gov/wfdss/wfdss_home.shtml