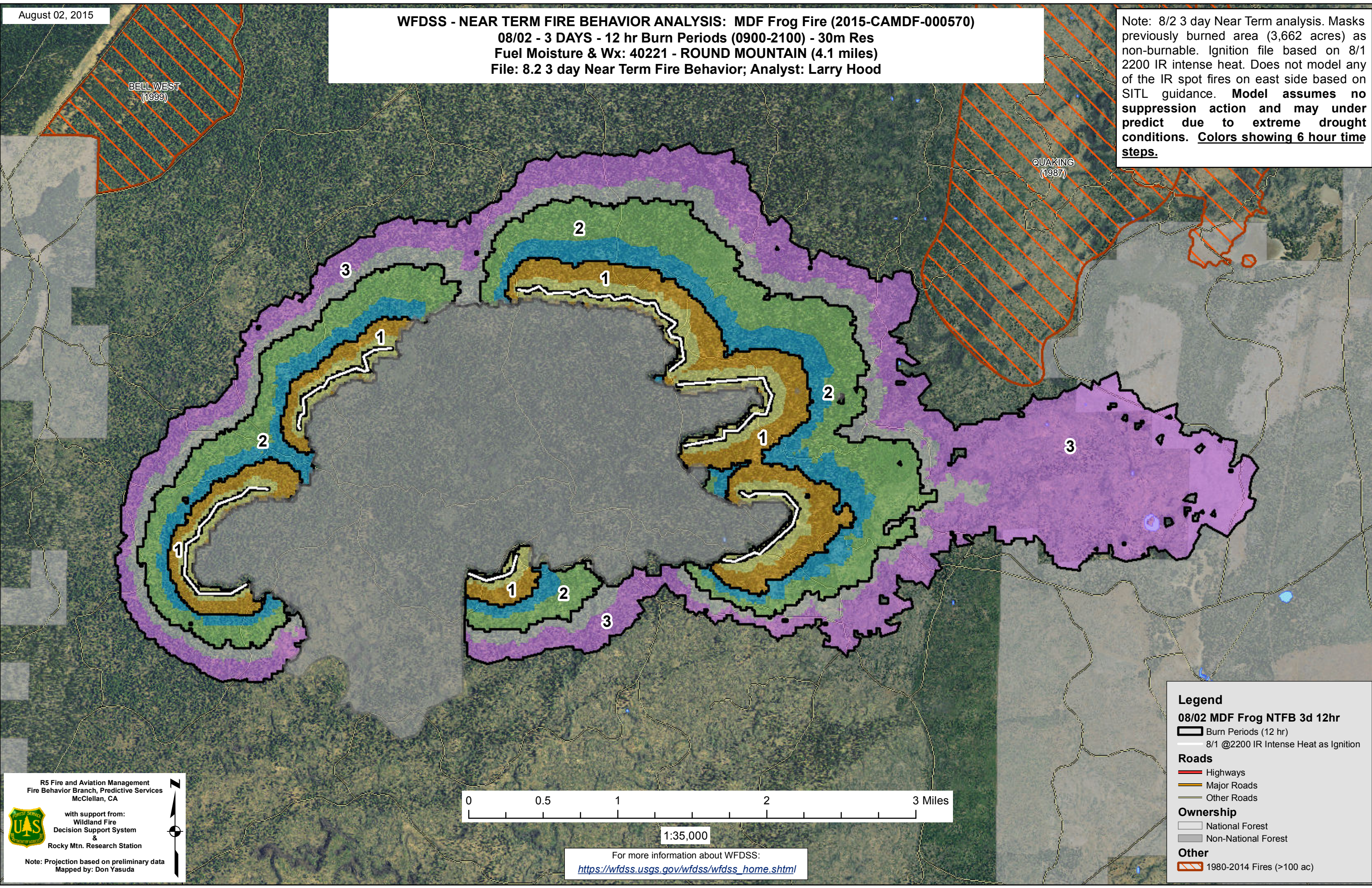


**WFDSS - NEAR TERM FIRE BEHAVIOR ANALYSIS: MDF Frog Fire (2015-CAMDF-000570)**  
08/02 - 3 DAYS - 12 hr Burn Periods (0900-2100) - 30m Res  
Fuel Moisture & Wx: 40221 - ROUND MOUNTAIN (4.1 miles)  
File: 8.2 3 day Near Term Fire Behavior; Analyst: Larry Hood


Note: 8/2 3 day Near Term analysis. Masks previously burned area (3,662 acres) as non-burnable. Ignition file based on 8/1 2200 IR intense heat. Does not model any of the IR spot fires on east side based on SITL guidance. **Model assumes no suppression action and may under predict due to extreme drought conditions. Colors showing 6 hour time steps.**



BELL WEST (1999)

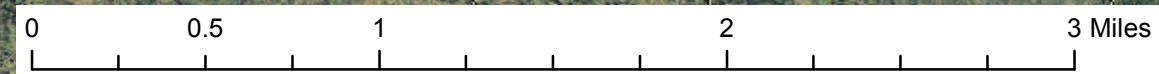
QUAKING (1987)

R5 Fire and Aviation Management  
Fire Behavior Branch, Predictive Services  
McClellan, CA



with support from:  
Wildland Fire  
Decision Support System  
&  
Rocky Mtn. Research Station

Note: Projection based on preliminary data  
Mapped by: Don Yasuda



1:35,000

For more information about WFDSS:  
[https://wfdss.usgs.gov/wfdss/wfdss\\_home.shtml](https://wfdss.usgs.gov/wfdss/wfdss_home.shtml)

**Legend**

**08/02 MDF Frog NTFB 3d 12hr**

-  Burn Periods (12 hr)
-  8/1 @2200 IR Intense Heat as Ignition

**Roads**

-  Highways
-  Major Roads
-  Other Roads

**Ownership**

-  National Forest
-  Non-National Forest

**Other**

-  1980-2014 Fires (>100 ac)