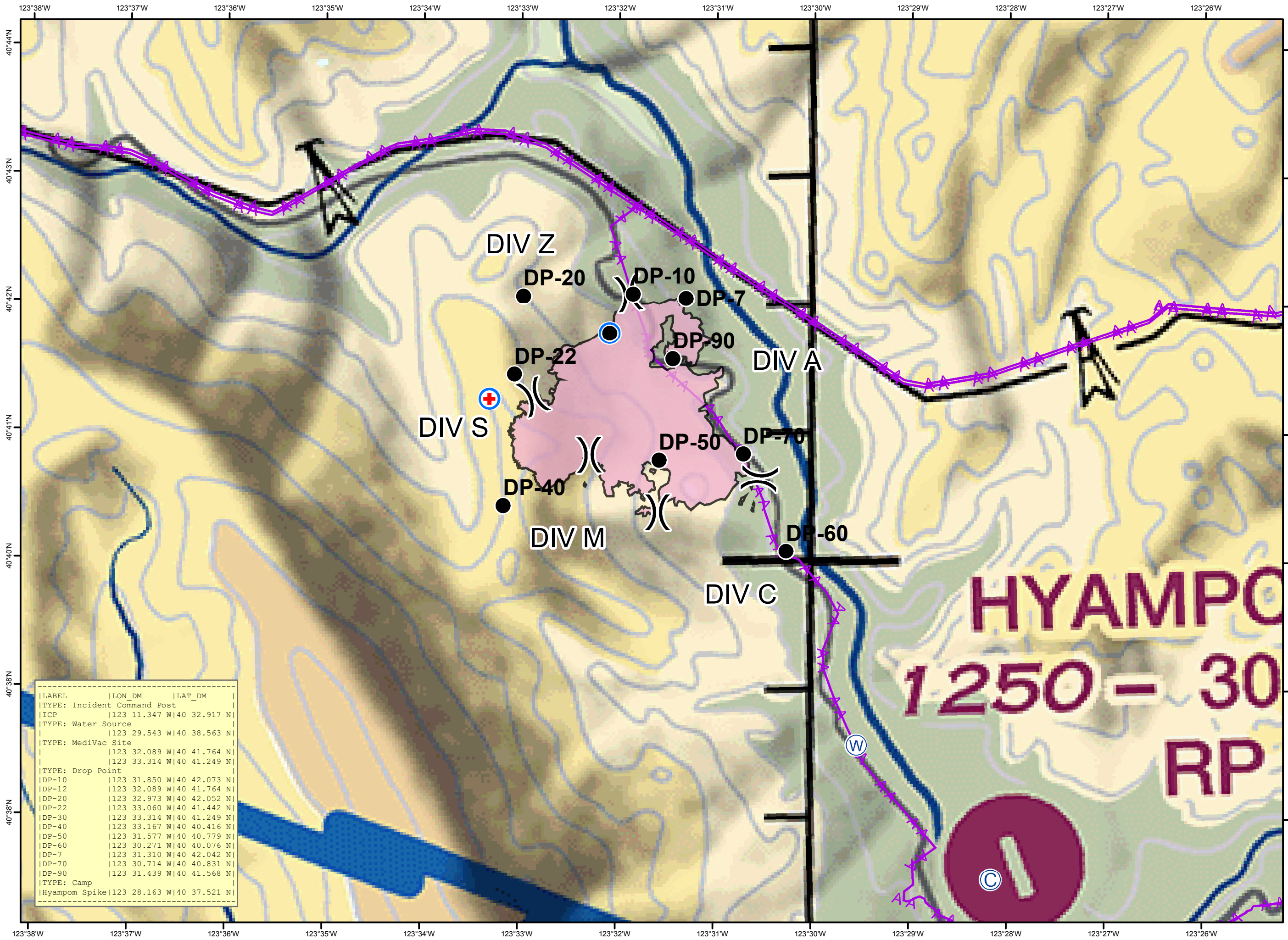


**SADDLE FIRE
SHF-1371**
JUNE 15, 2015
PILOT MAP



LABEL	LON_DM	LAT_DM
TYPE: Incident Command Post		
ICP	123 11.347 W 40 32.917 N	
TYPE: Water Source		
	123 29.543 W 40 38.563 N	
TYPE: MediVac Site		
	123 32.089 W 40 41.764 N	
	123 33.314 W 40 41.249 N	
TYPE: Drop Point		
DP-10	123 31.850 W 40 42.073 N	
DP-12	123 32.089 W 40 41.764 N	
DP-20	123 32.973 W 40 42.052 N	
DP-22	123 33.060 W 40 41.442 N	
DP-30	123 33.314 W 40 41.249 N	
DP-40	123 33.167 W 40 40.416 N	
DP-50	123 31.577 W 40 40.779 N	
DP-60	123 30.271 W 40 40.076 N	
DP-7	123 31.310 W 40 42.042 N	
DP-70	123 30.714 W 40 40.831 N	
DP-90	123 31.439 W 40 41.568 N	
TYPE: Camp		
Hyampom Spike	123 28.163 W 40 37.521 N	

**HYAMPOM
1250 - 30
RP**

- Camp
- Unimproved Landing Site
- Drop Point
- Water Source
- Division
- Fire Perimeter
- Transmission Lines