

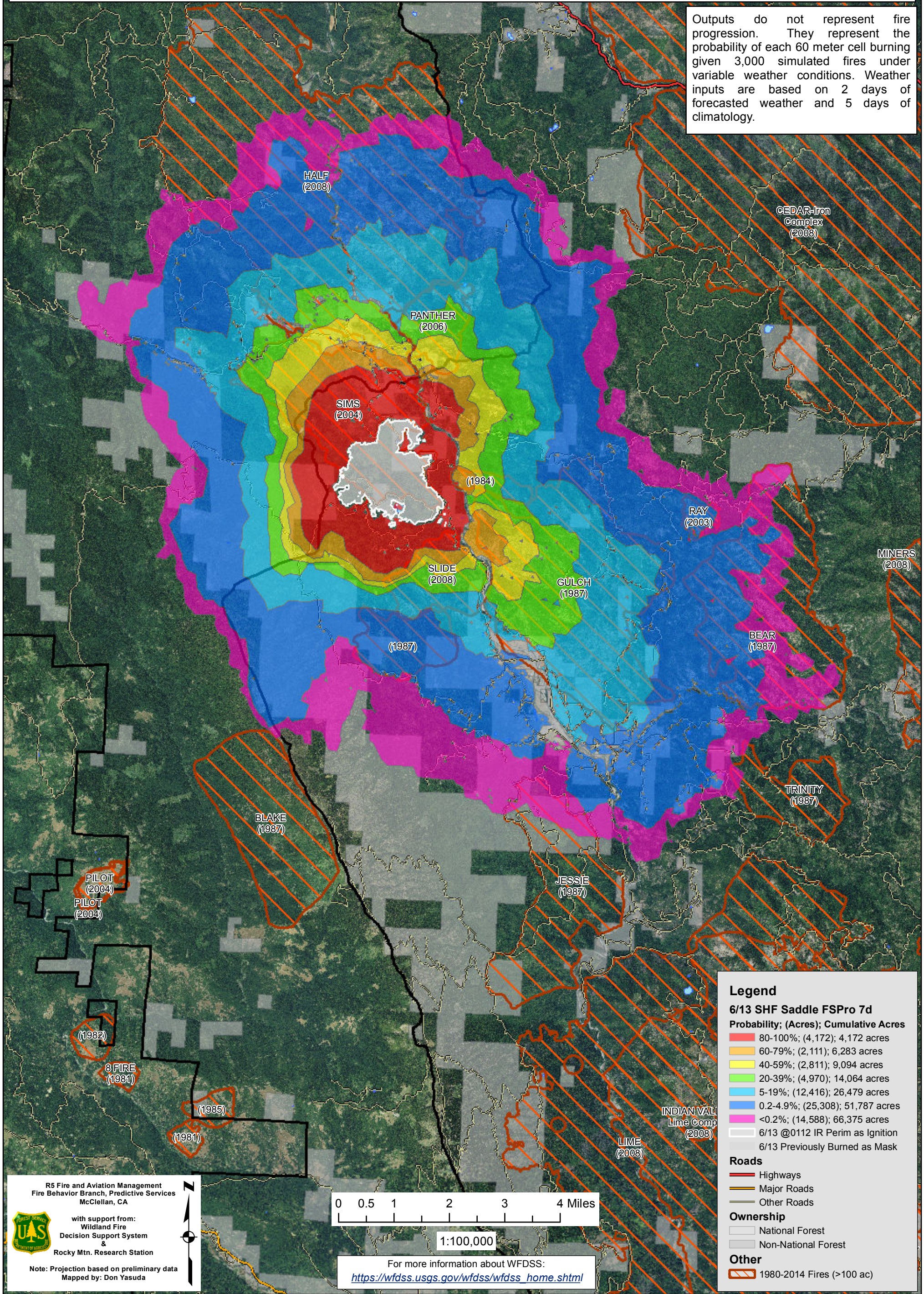
June 13, 2015

**WFDSS - FSPRO PROBABILITY: SHF SADDLE Fire (2015-CASHF-001371)**  
**06/13 - 7 DAYS - 60m Res; 3000 Fire Sim**  
**ERC: 40519 - UNDERWOOD (1.6 miles); WINDS: 40519 - UNDERWOOD (1.6 miles)**  
**File: 6.13 to 6.19.2015 7 day FSPRO; Analyst: Larry Hood**

ONION (1999)

Notes: 6/13 update to the initial 6/11 analysis. Uses June 13, 0112 IR perimeter (1,331 acres) for ignition file. Previously burned area masked as non-burnable. 2 days of forecasted weather. No barrier files were used as fire is currently at 5 percent contained. Top 4 ERC bins have burn periods increased by 2 hours to capture effects of drought. Model assumes no suppression action.

Outputs do not represent fire progression. They represent the probability of each 60 meter cell burning given 3,000 simulated fires under variable weather conditions. Weather inputs are based on 2 days of forecasted weather and 5 days of climatology.



**Legend**

**6/13 SHF Saddle FSPRO 7d**

**Probability; (Acres); Cumulative Acres**

80-100%	(4,172);	4,172 acres
60-79%	(2,111);	6,283 acres
40-59%	(2,811);	9,094 acres
20-39%	(4,970);	14,064 acres
5-19%	(12,416);	26,479 acres
0.2-4.9%	(25,308);	51,787 acres
<0.2%	(14,588);	66,375 acres

[White Box] 6/13 @0112 IR Perim as Ignition  
 [Grey Box] 6/13 Previously Burned as Mask

**Roads**

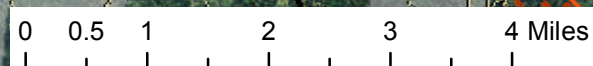
- [Red Line] Highways
- [Orange Line] Major Roads
- [Grey Line] Other Roads

**Ownership**

- [White Box] National Forest
- [Grey Box] Non-National Forest

**Other**

- [Orange Hatched Box] 1980-2014 Fires (>100 ac)



1:100,000

For more information about WFDSS:  
[https://wfdss.usgs.gov/wfdss/wfdss\\_home.shtml](https://wfdss.usgs.gov/wfdss/wfdss_home.shtml)

R5 Fire and Aviation Management  
 Fire Behavior Branch, Predictive Services  
 McClellan, CA

with support from:  
 Wildland Fire  
 Decision Support System  
 &  
 Rocky Mtn. Research Station

Note: Projection based on preliminary data  
 Mapped by: Don Yasuda