

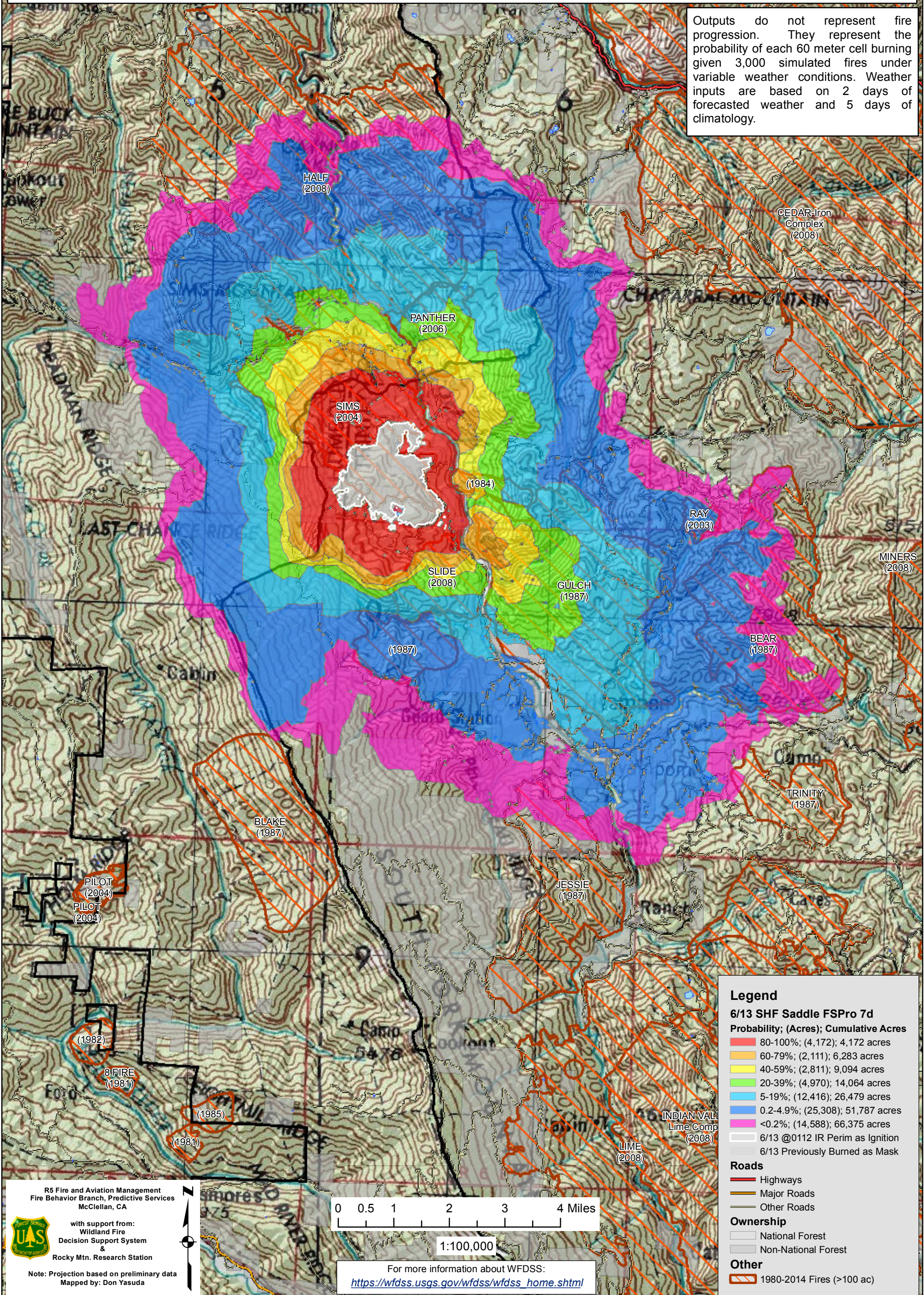
June 13, 2015

WFDSS - FSPRO PROBABILITY: SHF SADDLE Fire (2015-CASHF-001371)
06/13 - 7 DAYS - 60m Res; 3000 Fire Sim
ERC: 40519 - UNDERWOOD (1.6 miles); WINDS: 40519 - UNDERWOOD (1.6 miles)
File: 6.13 to 6.19.2015 7 day FSPRO; Analyst: Larry Hood

ONION (1999)

Notes: 6/13 update to the initial 6/11 analysis. Uses June 13, 0112 IR perimeter (1,331 acres) for ignition file. Previously burned area masked as non-burnable. 2 days of forecasted weather. No barrier files were used as fire is currently at 5 percent contained. Top 4 ERC bins have burn periods increased by 2 hours to capture effects of drought. Model assumes no suppression action.

Outputs do not represent fire progression. They represent the probability of each 60 meter cell burning given 3,000 simulated fires under variable weather conditions. Weather inputs are based on 2 days of forecasted weather and 5 days of climatology.



Legend

6/13 SHF Saddle FSPRO 7d

Probability; (Acres); Cumulative Acres

80-100%	(4,172); 4,172 acres
60-79%	(2,111); 6,283 acres
40-59%	(2,811); 9,094 acres
20-39%	(4,970); 14,064 acres
5-19%	(12,416); 26,479 acres
0.2-4.9%	(25,308); 51,787 acres
<0.2%	(14,588); 66,375 acres

6/13 @0112 IR Perim as Ignition
 6/13 Previously Burned as Mask

Roads

- Highways
- Major Roads
- Other Roads

Ownership

- National Forest
- Non-National Forest

Other

- 1980-2014 Fires (>100 ac)

R5 Fire and Aviation Management
 Fire Behavior Branch, Predictive Services
 McClellan, CA

with support from:
 Wildland Fire
 Decision Support System
 &
 Rocky Mtn. Research Station

Note: Projection based on preliminary data
 Mapped by: Don Yasuda

0 0.5 1 2 3 4 Miles

1:100,000

For more information about WFDSS:
https://wfdss.usgs.gov/wfdss/wfdss_home.shtml