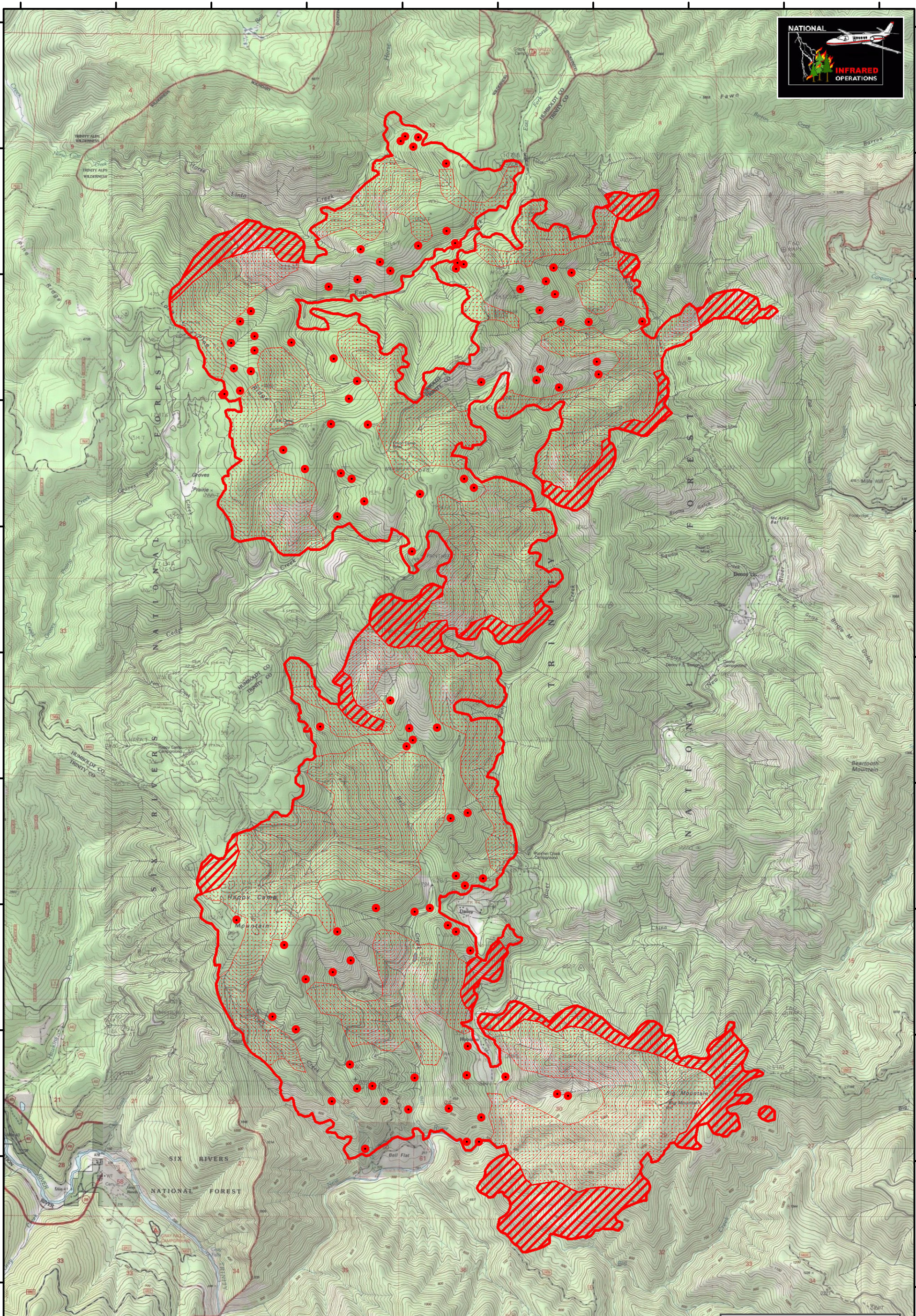


123°31'0"W 123°30'0"W 123°29'0"W 123°28'0"W 123°27'0"W 123°26'0"W 123°25'0"W 123°24'0"W 123°23'0"W 123°22'0"W



41°0'0"N
40°59'0"N
40°58'0"N
40°57'0"N
40°56'0"N
40°55'0"N
40°54'0"N
40°53'0"N
40°52'0"N
40°51'0"N
40°50'0"N

41°0'0"N
40°59'0"N
40°58'0"N
40°57'0"N
40°56'0"N
40°55'0"N
40°54'0"N
40°53'0"N
40°52'0"N
40°51'0"N
40°50'0"N



River Complex

Infrared Heat Sources: 9 August 2015 0000 MDT
Perimeter Acres: 15,863 Growth since last period: 2,036 acres
IR Interpreter: B. Teats



Legend

- Isolated Heat Sources
- ▨ Scattered Heat
- ▨ Intense Heat
- ▭ Heat Perimeter

123°31'0"W 123°30'0"W 123°29'0"W 123°28'0"W 123°27'0"W 123°26'0"W 123°25'0"W 123°24'0"W 123°23'0"W 123°22'0"W