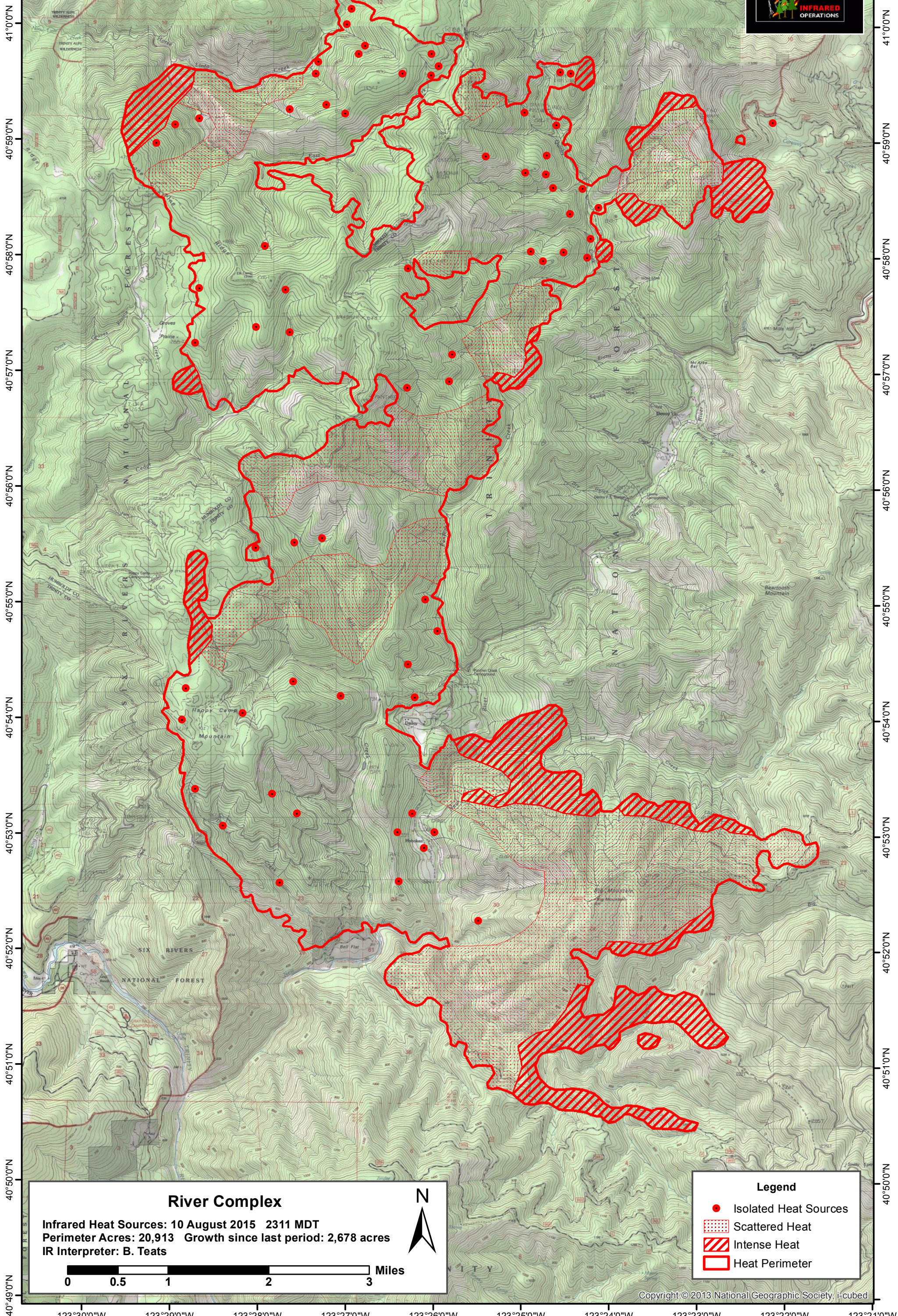


123°30'0"W 123°29'0"W 123°28'0"W 123°27'0"W 123°26'0"W 123°25'0"W 123°24'0"W 123°23'0"W 123°22'0"W



### River Complex

Infrared Heat Sources: 10 August 2015 2311 MDT  
Perimeter Acres: 20,913 Growth since last period: 2,678 acres  
IR Interpreter: B. Teats



**Legend**

- Isolated Heat Sources
- Scattered Heat
- / Intense Heat
- Heat Perimeter