

123°34'0"W 123°33'0"W 123°32'0"W 123°31'0"W 123°30'0"W 123°29'0"W 123°28'0"W 123°27'0"W 123°26'0"W 123°25'0"W 123°24'0"W 123°23'0"W 123°22'0"W 123°21'0"W 123°20'0"W

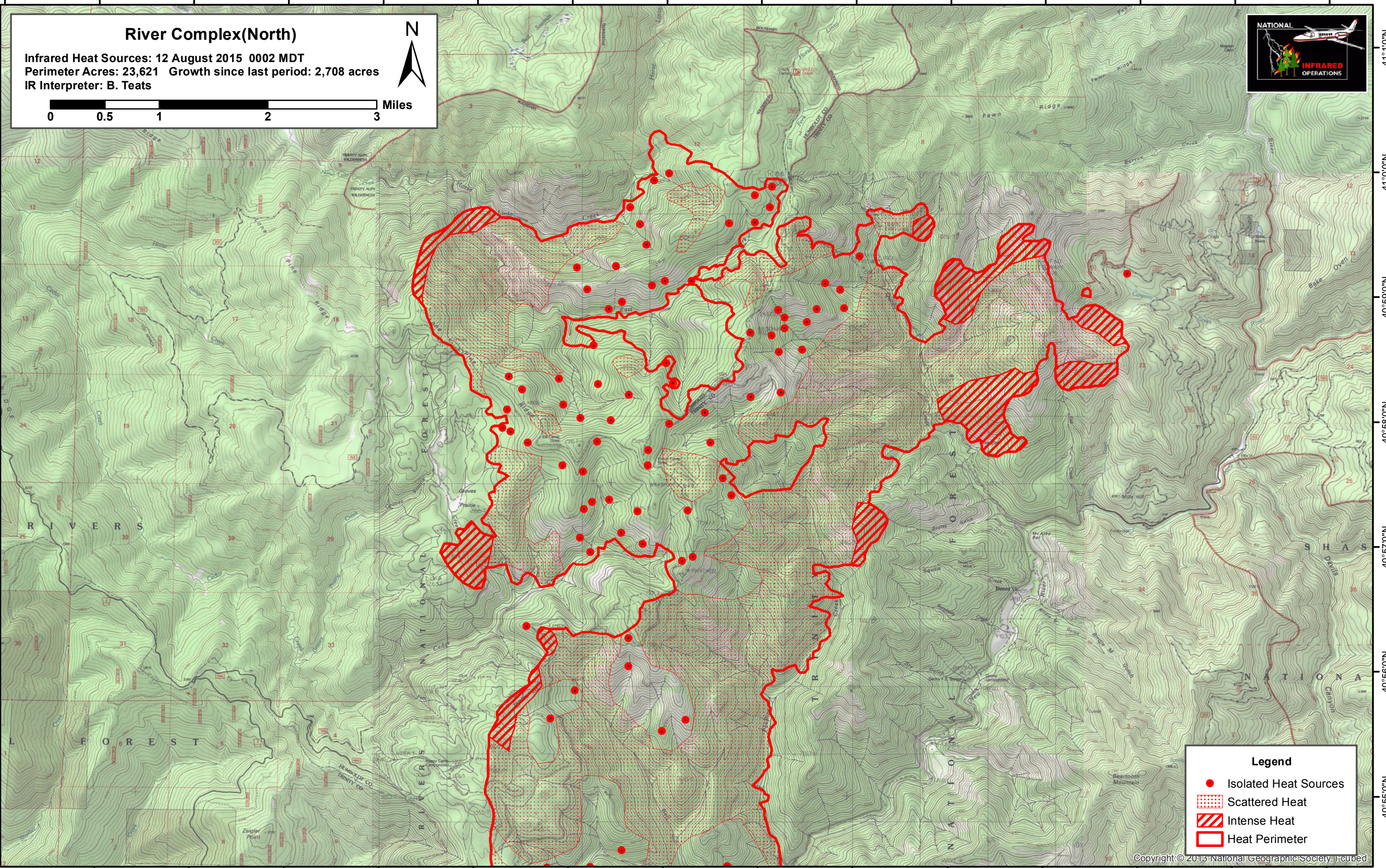
41°10'N
41°00'N
40°59'0"N
40°58'0"N
40°57'0"N
40°56'0"N
40°55'0"N

41°10'N
41°00'N
40°59'0"N
40°58'0"N
40°57'0"N
40°56'0"N
40°55'0"N

River Complex(North)

Infrared Heat Sources: 12 August 2015 0002 MDT
 Perimeter Acres: 23,621 Growth since last period: 2,708 acres
 IR Interpreter: B. Teats

0 0.5 1 2 3 Miles



Legend

- Isolated Heat Sources
- Scattered Heat
- Intense Heat
- Heat Perimeter

123°33'0"W 123°32'0"W 123°31'0"W 123°30'0"W 123°29'0"W 123°28'0"W 123°27'0"W 123°26'0"W 123°25'0"W 123°24'0"W 123°23'0"W 123°22'0"W 123°21'0"W 123°20'0"W