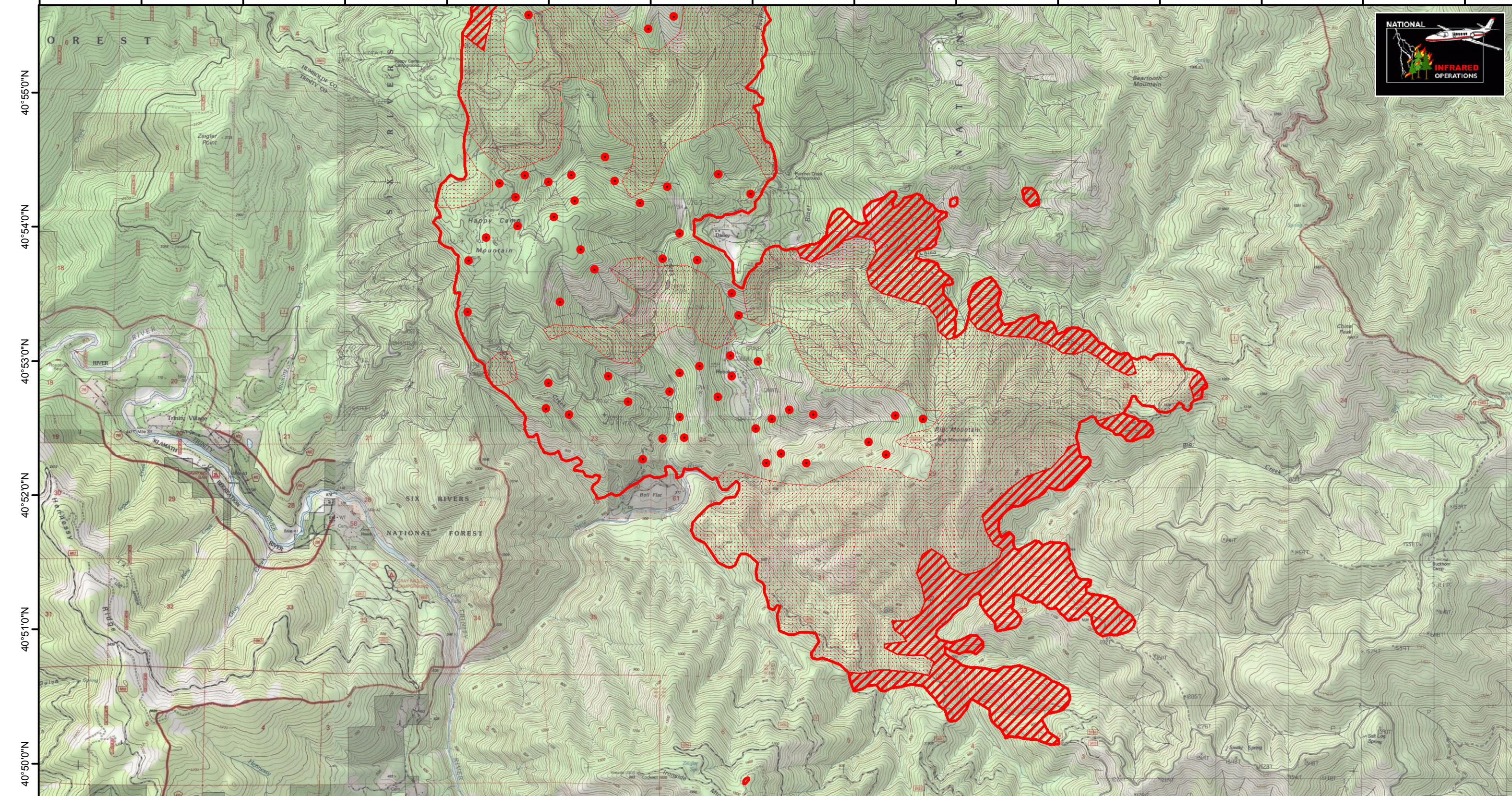


123°33'0"W 123°32'0"W 123°31'0"W 123°30'0"W 123°29'0"W 123°28'0"W 123°27'0"W 123°26'0"W 123°25'0"W 123°24'0"W 123°23'0"W 123°22'0"W 123°21'0"W 123°20'0"W 123°19'0"W



River Complex(South)

Infrared Heat Sources: 12 August 2015 0002 MDT
Perimeter Acres: 23,621 Growth since last period: 2,708 acres
IR Interpreter: B. Teats



Legend

- Isolated Heat Sources
- Scattered Heat
- ▨ Intense Heat
- Heat Perimeter

40°55'0"N
40°54'0"N
40°53'0"N
40°52'0"N
40°51'0"N
40°50'0"N
40°49'0"N

40°55'0"N
40°54'0"N
40°53'0"N
40°52'0"N
40°51'0"N
40°50'0"N
40°49'0"N

123°32'0"W 123°31'0"W 123°30'0"W 123°29'0"W 123°28'0"W 123°27'0"W 123°26'0"W 123°25'0"W 123°24'0"W 123°23'0"W 123°22'0"W 123°21'0"W 123°20'0"W 123°19'0"W