

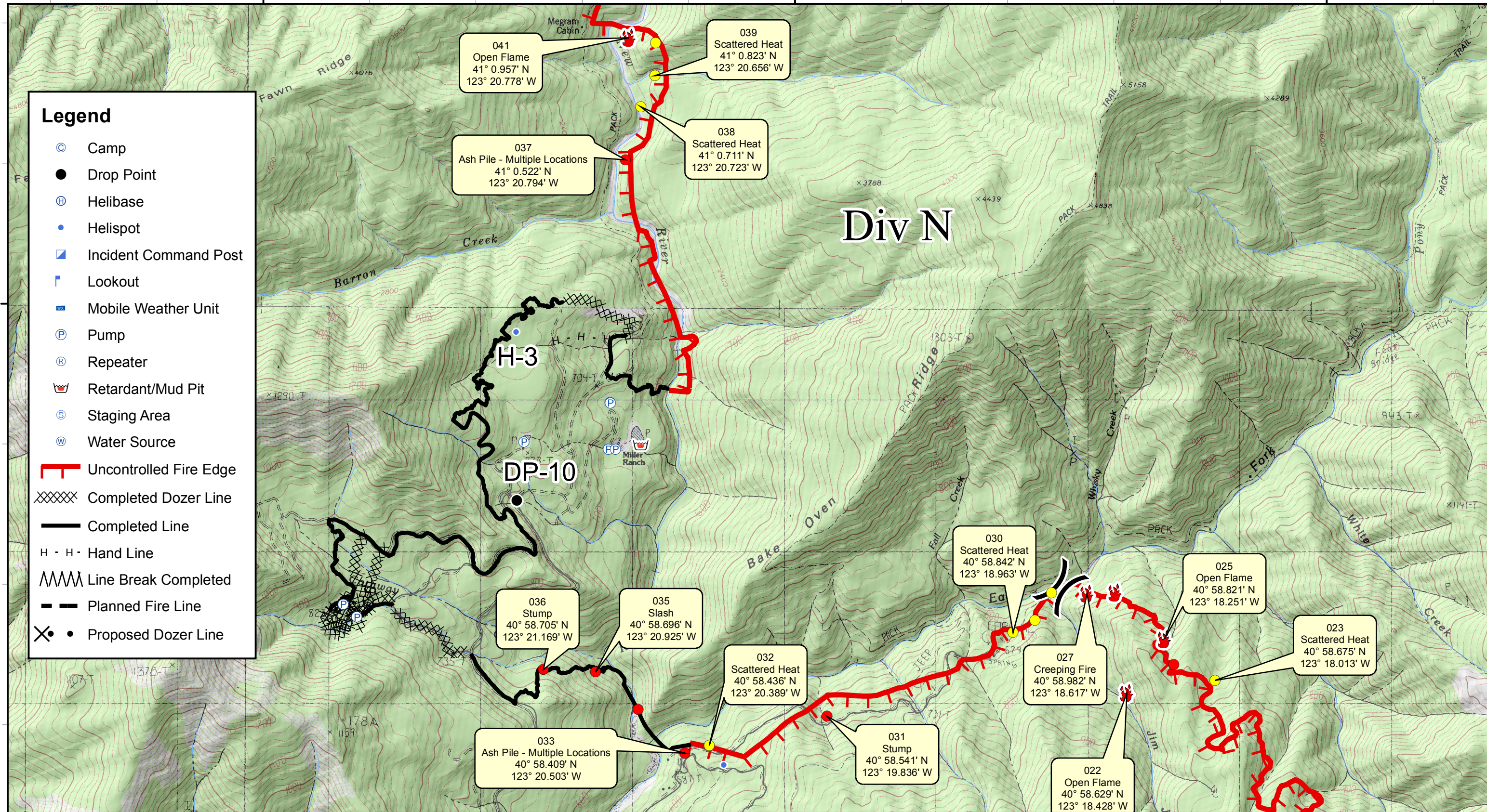
123°22'30"W

123°20'0"W

123°17'30"W

Legend

- ⊙ Camp
- Drop Point
- ⊕ Helibase
- Helispot
- ▣ Incident Command Post
- ⌚ Lookout
- ☒ Mobile Weather Unit
- Ⓟ Pump
- Ⓡ Repeater
- 🛑 Retardant/Mud Pit
- Ⓢ Staging Area
- Ⓜ Water Source
- ┃ Uncontrolled Fire Edge
- XXXXX Completed Dozer Line
- Completed Line
- H · H · Hand Line
- 〰 Line Break Completed
- - - Planned Fire Line
- ⊗ Proposed Dozer Line



041
Open Flame
41° 0.957' N
123° 20.778' W

039
Scattered Heat
41° 0.823' N
123° 20.656' W

037
Ash Pile - Multiple Locations
41° 0.522' N
123° 20.794' W

038
Scattered Heat
41° 0.711' N
123° 20.723' W

DP-10

036
Stump
40° 58.705' N
123° 21.169' W

035
Slash
40° 58.696' N
123° 20.925' W

033
Ash Pile - Multiple Locations
40° 58.409' N
123° 20.503' W

032
Scattered Heat
40° 58.436' N
123° 20.389' W

031
Stump
40° 58.541' N
123° 19.836' W

030
Scattered Heat
40° 58.842' N
123° 18.963' W

027
Creeping Fire
40° 58.982' N
123° 18.617' W

022
Open Flame
40° 58.629' N
123° 18.428' W

025
Open Flame
40° 58.821' N
123° 18.251' W

023
Scattered Heat
40° 58.675' N
123° 18.013' W

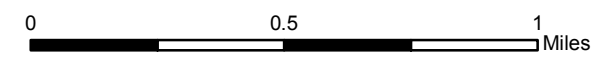
River Complex

CA-SHF-002066

DATUM WGS 84

Infrared Survey - Div N

Infrared Data Captured on 20150906 @ 1515



September 6, 2015

VETERAN'S EMERGENCY TECHNICAL SERVICES
www.VETSresponse.com
805.218.9646

VETS
Cost Effective Infrared

Aspen Helicopters
www.aspenhelo.com
805.985.5416

- Hot Spot - Significant Priority (Considerable Threat to Fireline)
- Hot Spot - Moderate Priority (Possible Threat to Fireline)
- 🔥 Live Fire - Uncontained Spot Fire or Fire Front