

123°20'0"W

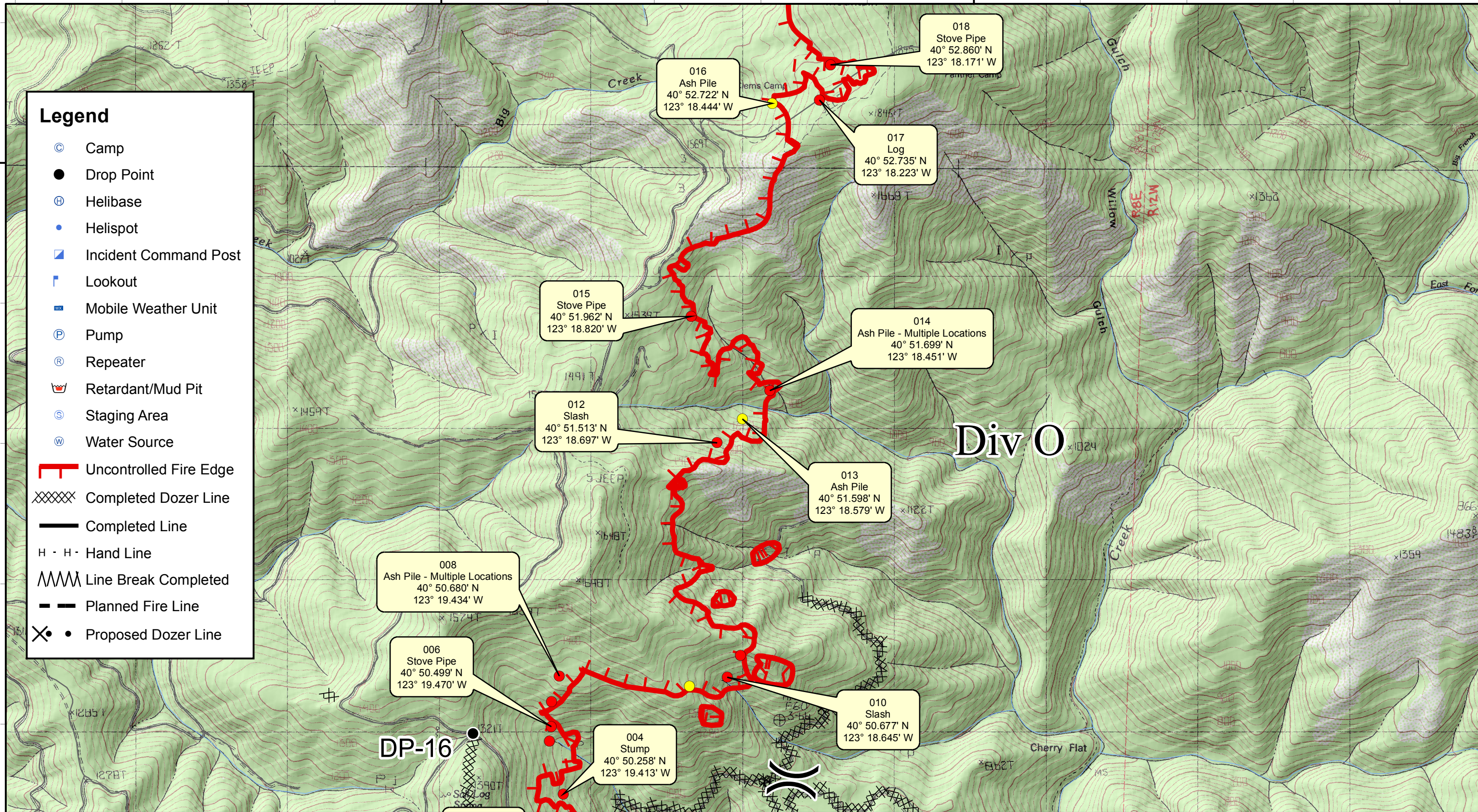
123°17'30"W

40°52'30"N

40°52'30"N

### Legend

- ⊙ Camp
- Drop Point
- ⊕ Helibase
- Helispot
- ▣ Incident Command Post
- ▤ Lookout
- ☒ Mobile Weather Unit
- Ⓟ Pump
- Ⓡ Repeater
- 🛑 Retardant/Mud Pit
- Ⓢ Staging Area
- Ⓜ Water Source
- ┃ Uncontrolled Fire Edge
- XXXXX Completed Dozer Line
- Completed Line
- H · H · Hand Line
- 〰 Line Break Completed
- - - Planned Fire Line
- ⊗ • Proposed Dozer Line



016  
Ash Pile  
40° 52.722' N  
123° 18.444' W

018  
Stove Pipe  
40° 52.860' N  
123° 18.171' W

017  
Log  
40° 52.735' N  
123° 18.223' W

015  
Stove Pipe  
40° 51.962' N  
123° 18.820' W

014  
Ash Pile - Multiple Locations  
40° 51.699' N  
123° 18.451' W

012  
Slash  
40° 51.513' N  
123° 18.697' W

013  
Ash Pile  
40° 51.598' N  
123° 18.579' W

008  
Ash Pile - Multiple Locations  
40° 50.680' N  
123° 19.434' W

006  
Stove Pipe  
40° 50.499' N  
123° 19.470' W

010  
Slash  
40° 50.677' N  
123° 18.645' W

004  
Stump  
40° 50.258' N  
123° 19.413' W

DP-16

# Div O



- Hot Spot - Significant Priority (Considerable Threat to Fireline)
- Hot Spot - Moderate Priority (Possible Threat to Fireline)
- 🔥 Live Fire - Uncontained Spot Fire or Fire Front

# River Complex

## CA-SHF-002066

DATUM WGS 84

**Infrared Survey - Div O (South)**  
 Infrared Data Captured on 20150906 @ 1515

0 0.5 1 Miles

