

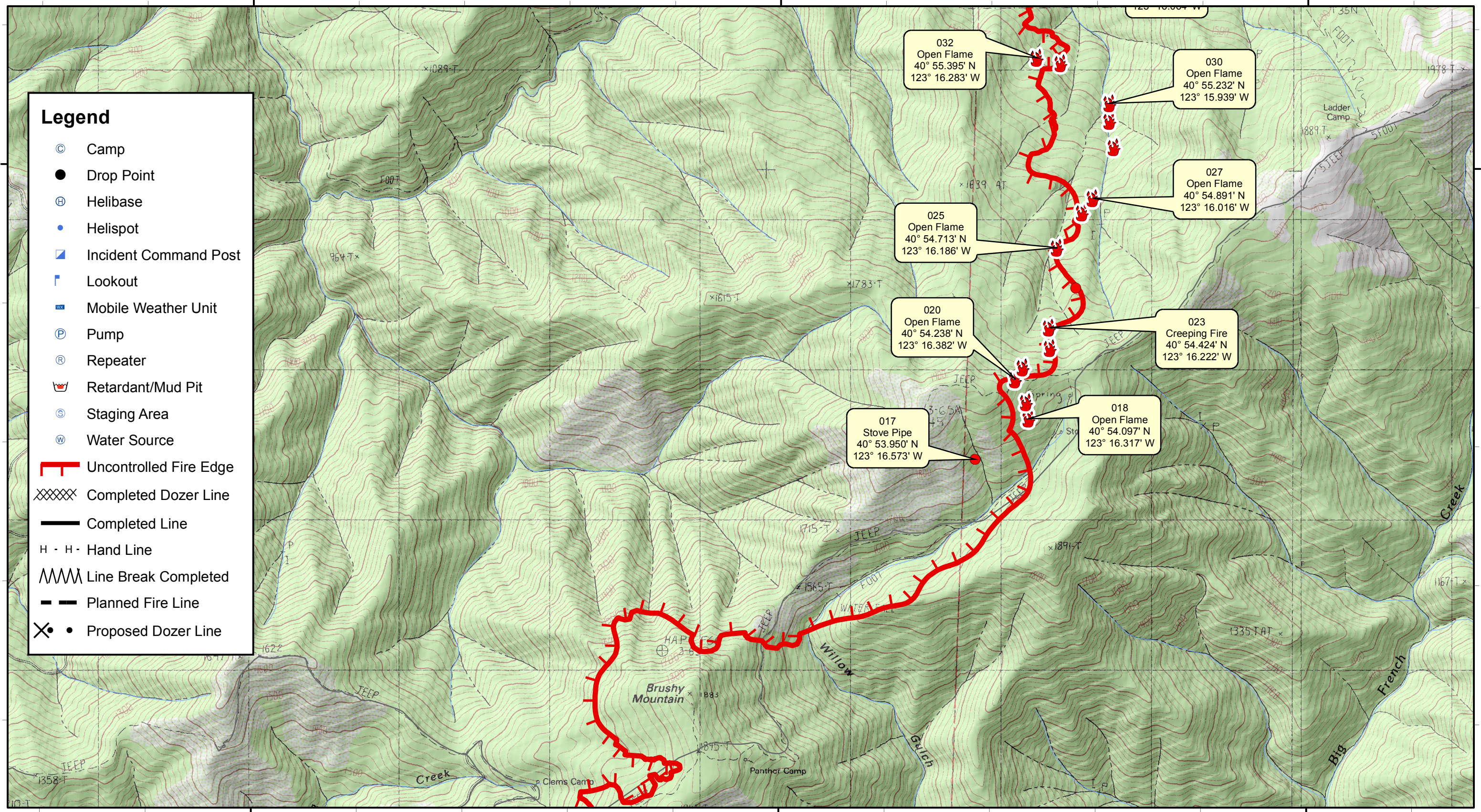
123°20'0"W 123°17'30"W 123°15'0"W

40°55'0"N

40°55'0"N

Legend

- ⊙ Camp
- Drop Point
- ⊕ Helibase
- Helispot
- ▣ Incident Command Post
- ▤ Lookout
- ☒ Mobile Weather Unit
- Ⓟ Pump
- Ⓡ Repeater
- 🔥 Retardant/Mud Pit
- Ⓢ Staging Area
- Ⓜ Water Source
- ┃ Uncontrolled Fire Edge
- XXXXX Completed Dozer Line
- Completed Line
- H · H · Hand Line
- 〰 Line Break Completed
- - - Planned Fire Line
- ⊗ • Proposed Dozer Line



032
Open Flame
40° 55.395' N
123° 16.283' W

030
Open Flame
40° 55.232' N
123° 15.939' W

027
Open Flame
40° 54.891' N
123° 16.016' W

025
Open Flame
40° 54.713' N
123° 16.186' W

023
Creeping Fire
40° 54.424' N
123° 16.222' W

017
Stove Pipe
40° 53.950' N
123° 16.573' W

018
Open Flame
40° 54.097' N
123° 16.317' W

123°20'0"W 123°17'30"W 123°15'0"W



- Hot Spot - Significant Priority (Considerable Threat to Fireline)
- Hot Spot - Moderate Priority (Possible Threat to Fireline)
- 🔥 Live Fire - Uncontained Spot Fire or Fire Front

River Complex

CA-SHF-002066

DATUM WGS 84

Infrared Survey - Div O (Page 2)
Infrared Data Captured on 20150908 @ 1615

0 0.5 1 Miles

