



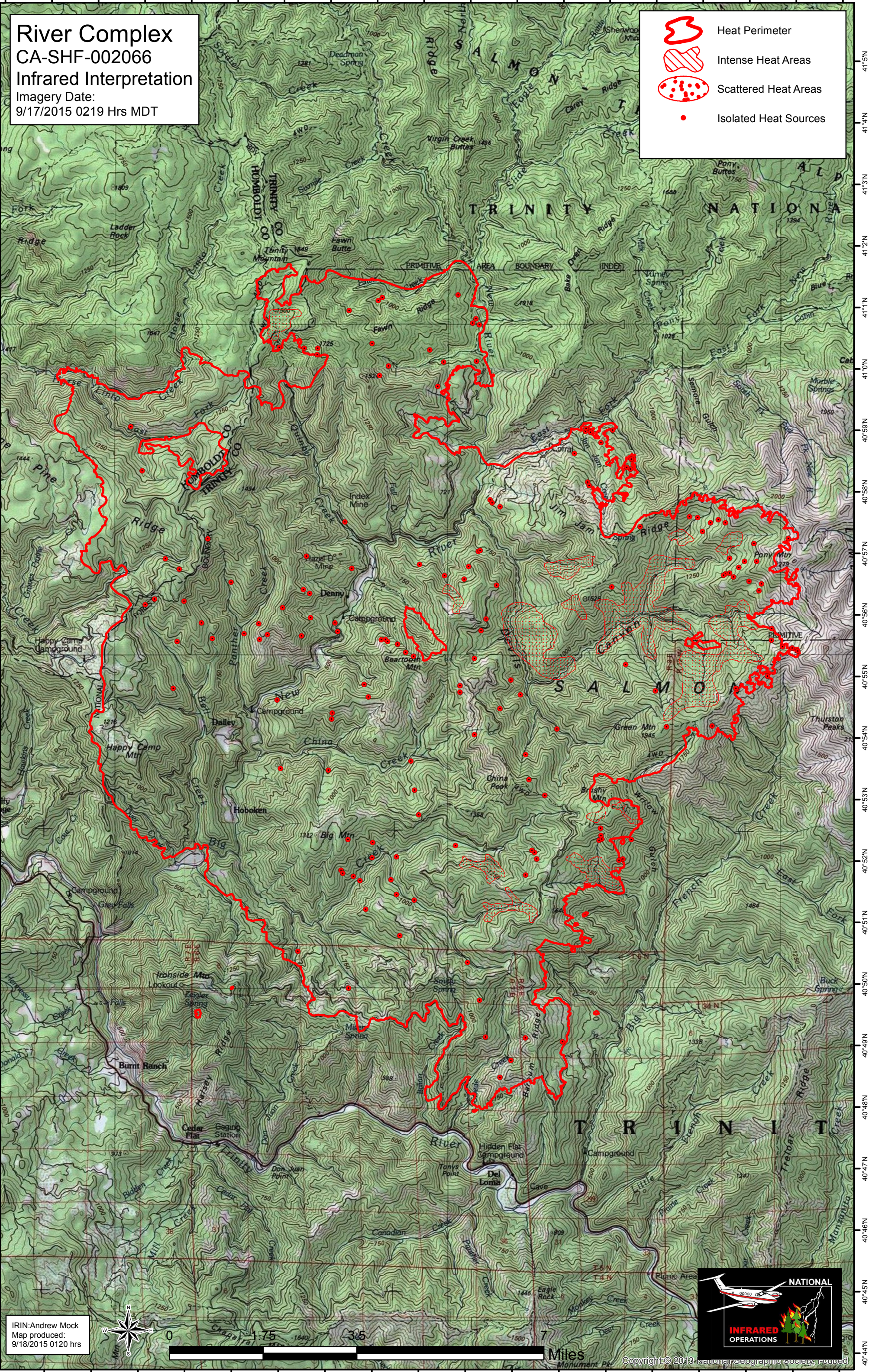
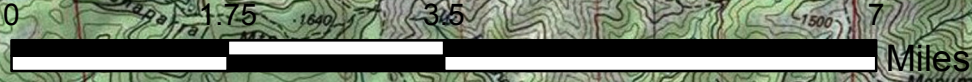


River Complex
CA-SHF-002066
Infrared Interpretation
Imagery Date:
9/17/2015 0219 Hrs MDT

-  Heat Perimeter
-  Intense Heat Areas
-  Scattered Heat Areas
-  Isolated Heat Sources



IRIN:Andrew Mock
Map produced:
9/18/2015 0120 hrs



Copyright © 2013 National Geographic Society, Inc.