

123°30'0"W 123°28'0"W 123°26'0"W 123°24'0"W 123°22'0"W 123°20'0"W 123°18'0"W 123°16'0"W 123°14'0"W

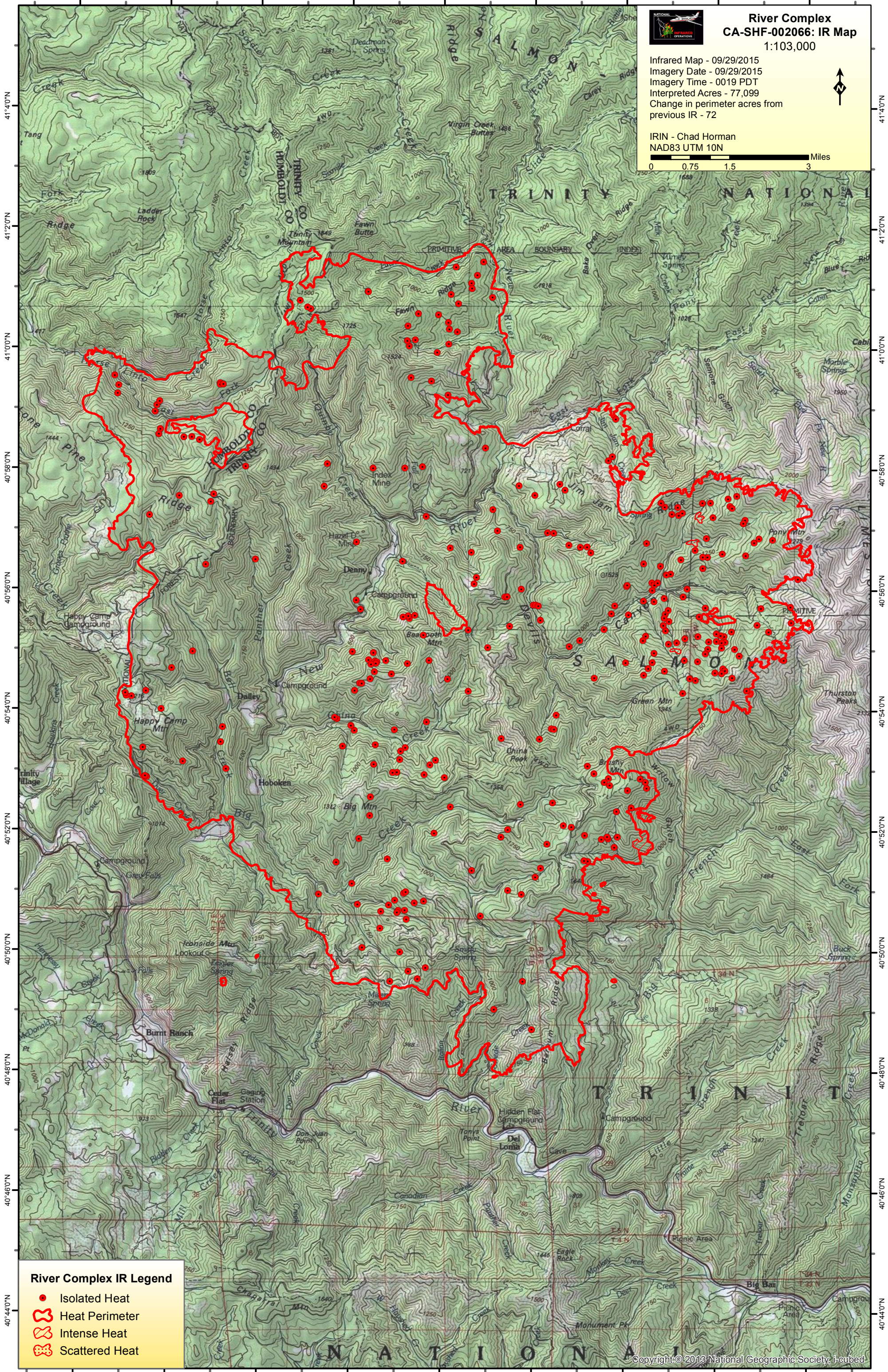
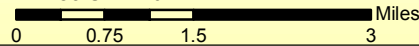


### River Complex CA-SHF-002066: IR Map 1:103,000

Infrared Map - 09/29/2015  
Imagery Date - 09/29/2015  
Imagery Time - 0019 PDT  
Interpreted Acres - 77,099  
Change in perimeter acres from  
previous IR - 72



IRIN - Chad Horman  
NAD83 UTM 10N



#### River Complex IR Legend

- Isolated Heat
- Heat Perimeter
- Intense Heat
- Scattered Heat

123°30'0"W 123°28'0"W 123°26'0"W 123°24'0"W 123°22'0"W 123°20'0"W 123°18'0"W 123°16'0"W 123°14'0"W