

123°30'0"W 123°28'0"W 123°26'0"W 123°24'0"W 123°22'0"W 123°20'0"W 123°18'0"W 123°16'0"W 123°14'0"W

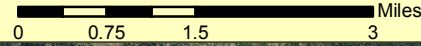


River Complex CA-SHF-002066: IR Map 1:103,000

Infrared Map - 09/29/2015
Imagery Date - 09/29/2015
Imagery Time - 0019 PDT
Interpreted Acres - 77,099
Change in perimeter acres from
previous IR - 72

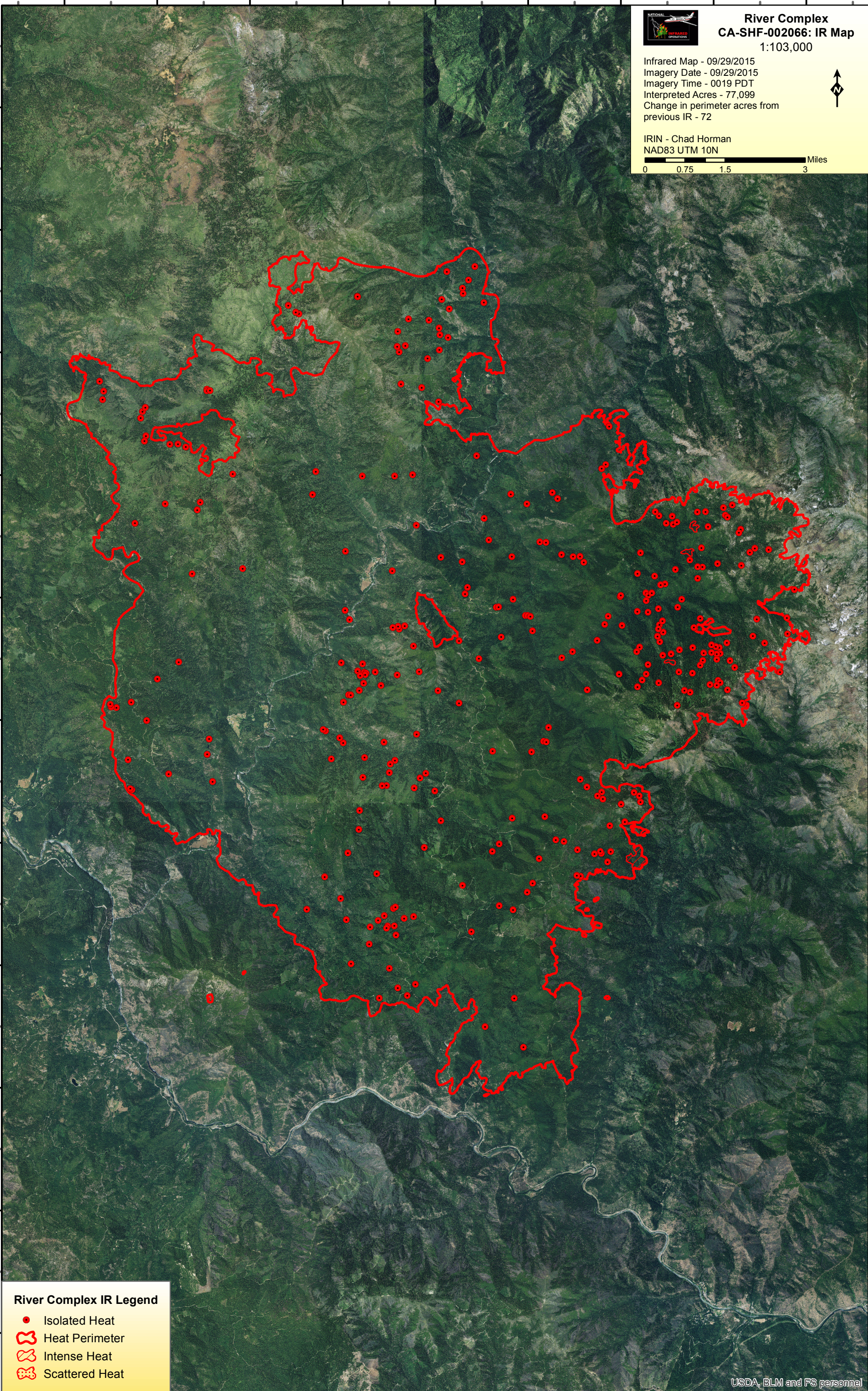


IRIN - Chad Horman
NAD83 UTM 10N






41°40'N
41°20'N
41°00'N
40°58'0"N
40°56'0"N
40°54'0"N
40°52'0"N
40°50'0"N
40°48'0"N
40°46'0"N
40°44'0"N

41°40'N
41°20'N
41°00'N
40°58'0"N
40°56'0"N
40°54'0"N
40°52'0"N
40°50'0"N
40°48'0"N
40°46'0"N
40°44'0"N



River Complex IR Legend

-  Isolated Heat
-  Heat Perimeter
-  Intense Heat
-  Scattered Heat

123°30'0"W 123°28'0"W 123°26'0"W 123°24'0"W 123°22'0"W 123°20'0"W 123°18'0"W 123°16'0"W 123°14'0"W